

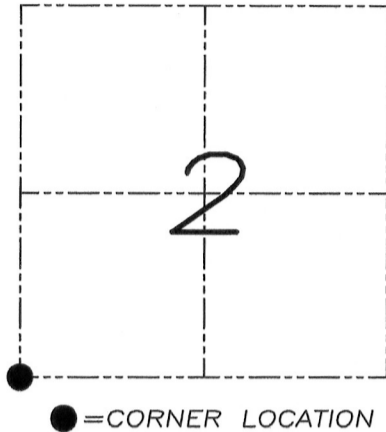
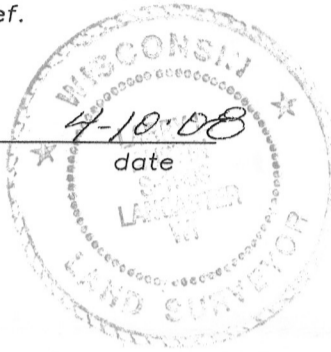
U.S. PUBLIC LAND SURVEY MONUMENT RECORD

Section 2, Town 5 North Range 3 West, Town of North Lancaster, Grant County, Wisconsin

CERTIFICATE

I, Larry L. Austin, do hereby certify that the corner location on this record was determined by me and/or under my direct supervision and that this U.S. public land survey monument record is correct and complete to the best of my knowledge and belief.

Larry L. Austin
Larry L. Austin, S-1903



HISTORY OF CORNER

Corner was originally set by Harvey Parke between December 1832 and January 1833. A survey filed in Book "D", Page 250 showed the corner as original and still standing. Steve Rossman Survey dated 6-20-2000 showed a found iron rod at this corner. No other record of the corner was found.

CORNER EVIDENCE FOUND

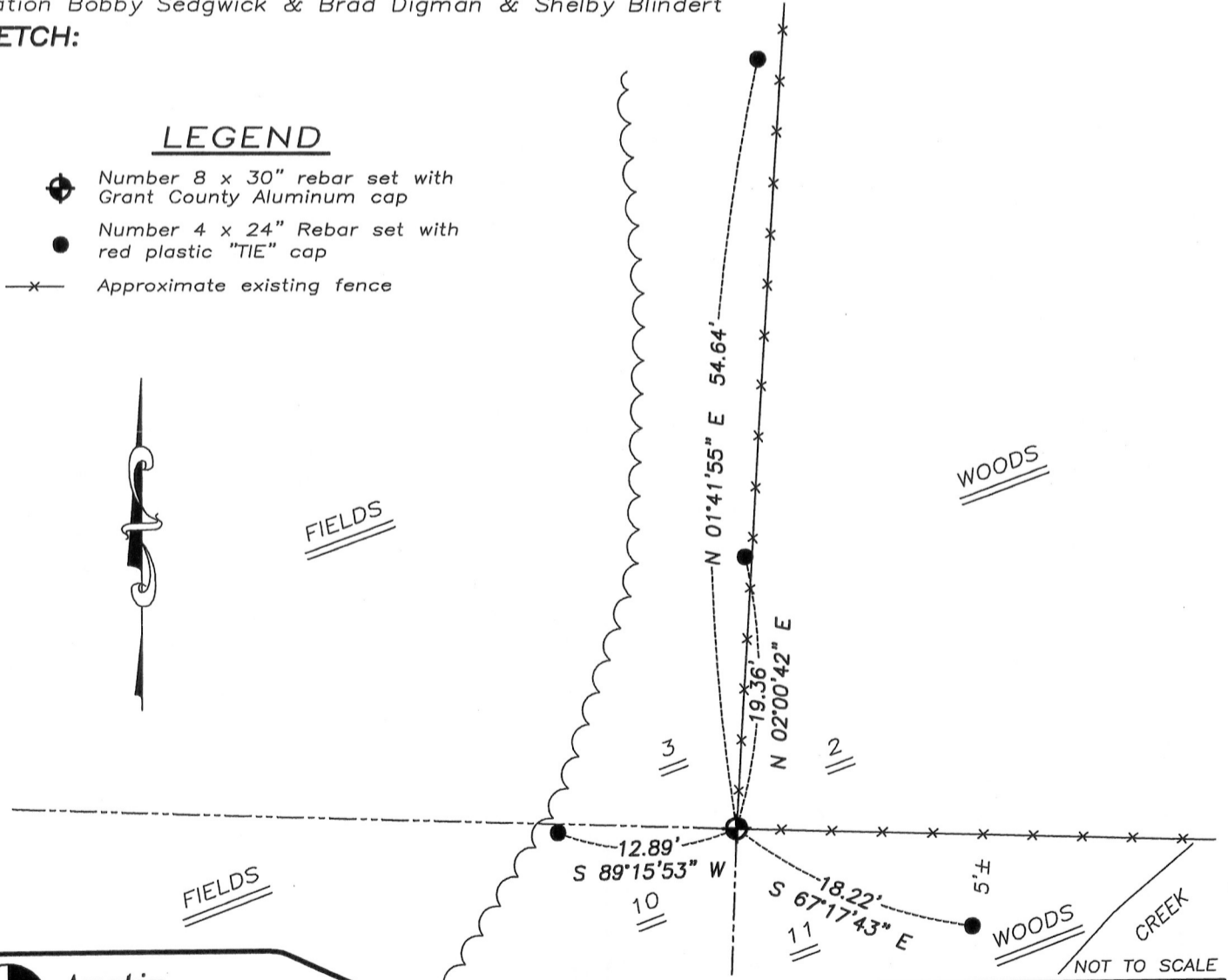
An iron rod could not be located as shown on the Steve Rossman Survey. However a nail was found at an existing fence intersection and accepted after verification by E.D.M. and G.P.S. methods.

DESCRIPTION OF CORNER AND WITNESS MONUMENTS, references and accessories used to perpetuate the original or re-established location of this corner. Witnesses to monument location Bobby Sedgwick & Brad Digman & Shelby Blindert

SKETCH:

LEGEND

- Number 8 x 30" rebar set with Grant County Aluminum cap
- Number 4 x 24" Rebar set with red plastic "TIE" cap
- x- Approximate existing fence



Austin Engineering LLC

4211 HWY 81 E, LANCASTER, WI 53813
PHONE 608-723-6363 FAX 608-723-6702

JOB NUMBER 09S022-OSTER
FIELDBOOK: TDSR, 2802
G:\T5NR3W\02
H:\TIE\T5NR3W\25

DRAWN BY: SW AUSTIN
APPROVED: LL AUSTIN

25

JAN 23 2012