

FOR GRANT COUNTY, WISCONSIN

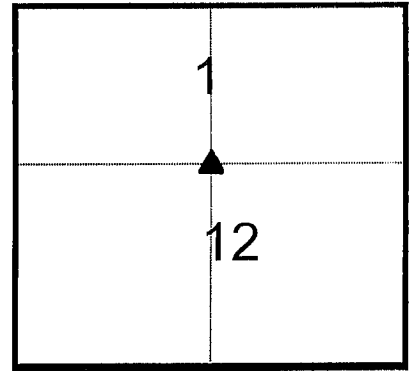
Note: This form is intended and designed to fulfill all requirements of Wisconsin Administrative Code, Chapter AE-7.08, U.S. Public Land Survey Monument Record (3)(a)(b)(c)(d)(e)(f)(g)(h)(i). Use additional sheets if necessary.

(a) The One Quarter corner common to Sections 1 and 12,
 Township(s) 5 North, Range(s) 03 West.

State Plane Coordinates: N _____

Datum: _____ E _____

TOWN OF NORTH LANCASTER



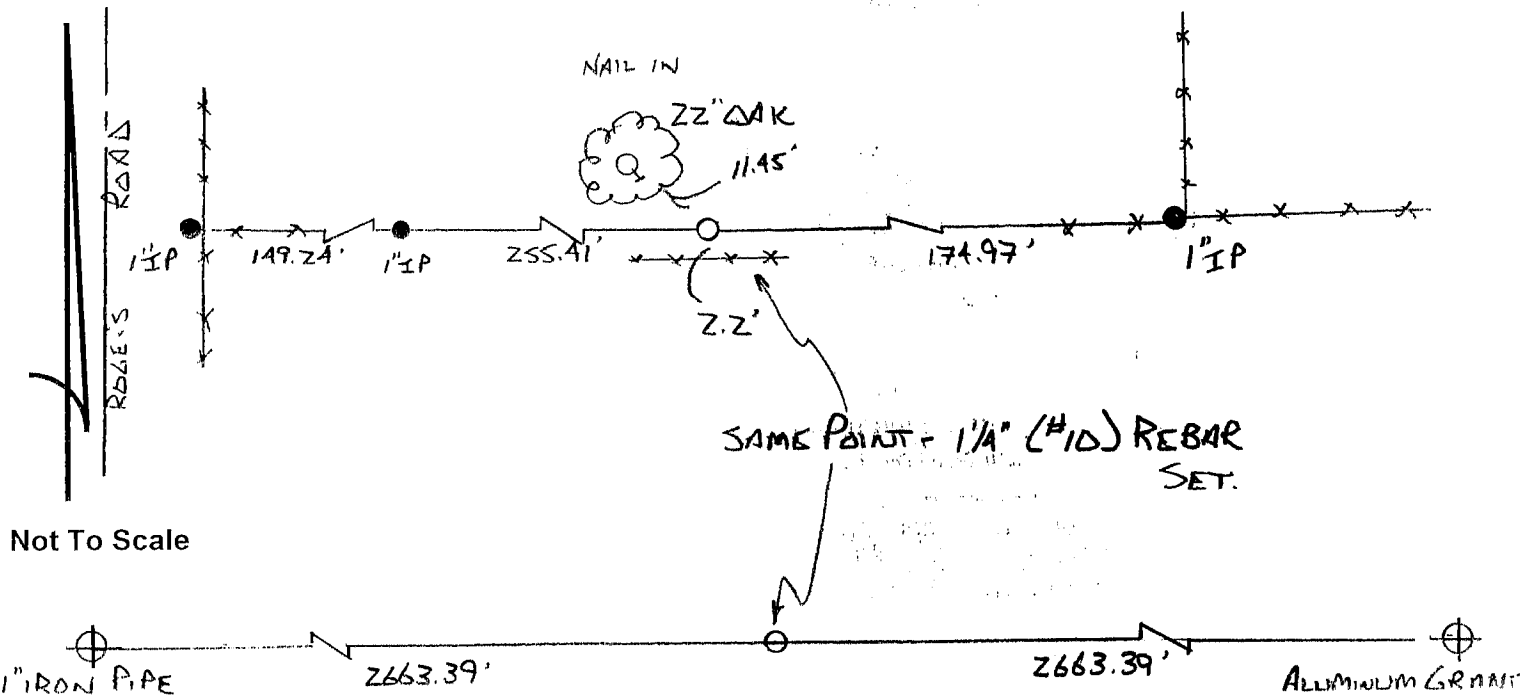
T S N R 3 W

(b)(f)(h) Description of monument found at this corner and if it was accepted, state all evidence (material, testimonial, occupational, plats records, other monuments) used as a basis for accepting. If not accepted or nothing was found, state evidence used as basis for establishing location and what was set. If re-established through lost corner proportionate methods, indicate all monuments, distances and directions used.

No evidence of a corner found at South quarter. Found an aluminum cap at the Southeast corner of Section 1, and evidence of a corner at the Southwest corner of Section 1. I traversed between these corners and set the South quarter corner on a split. Government notes show the distance between the Southwest corner and the Southeast corner to be 80.17 chains. I measured the distance as 5326.78 feet.

(c)(d)(e) Plan view of corner with ties to at least four (4) witness monuments. If in disagreement with previously established corner, show the distances between the two corners and also indicate ties to disputed corner.

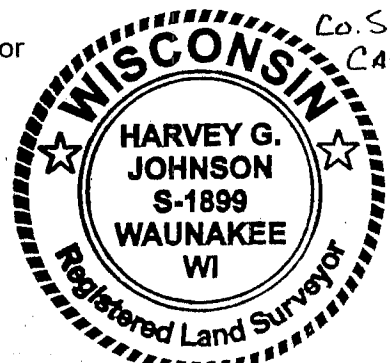
NORTH



Not To Scale

(I) Certify that the corner location on this record was determined by me or under my direction and control and that this U.S. Public Land survey Monument Record is correct and complete to the best of my knowledge and belief.

Signature Harvey G. Johnson Date 5/17/04



Filed for record in Grant County Surveyor's Office on _____ INDEX NO. 22