

GRANT COUNTY

Survey Monument Record

TYPE OF MONUMENT 3/4" X 24" IRON BAR

STATE PLANE COORDINATES: N FOUND
E _____

ELEVATION - M.S.L. DATUM: _____

THETA ANGLE: _____

FIELD BOOK: 96-08

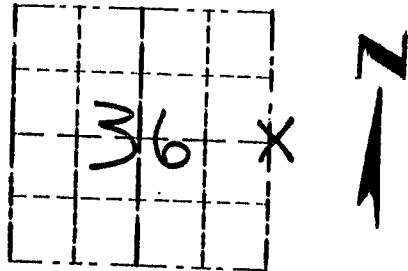
PAGE _____

CORNER NO. 120

SECTION 36

TOWN 5N

RANGE 2W



LOCATION
(Indicated by "X")

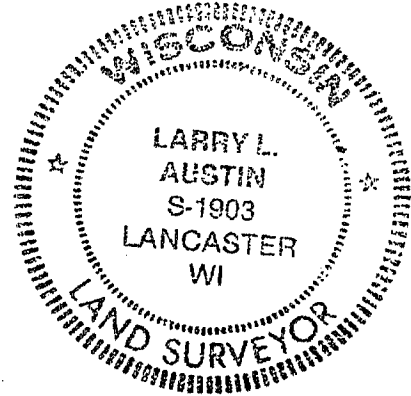
BASIS FOR MONUMENT LOCATION

(Use reverse side if necessary)

CORNER SET IN 1832 BY
SIBLEY, IN 1989 DOUGLAS
MALLIET SET THE WEST SEAL:

1/4 CORNER SECTION 31 TSNRIW.

I ACCEPTED HIS CORNER
AS THE EAST 1/4 CORNER
SECTION 36 TSNRZW, CORNER
IS SET ON LINE WITH FENCE
WEST AND CENTER LINE NORTH/
SOUTH, VERIFIED ITS LOCATION
USING EDM METHODS.



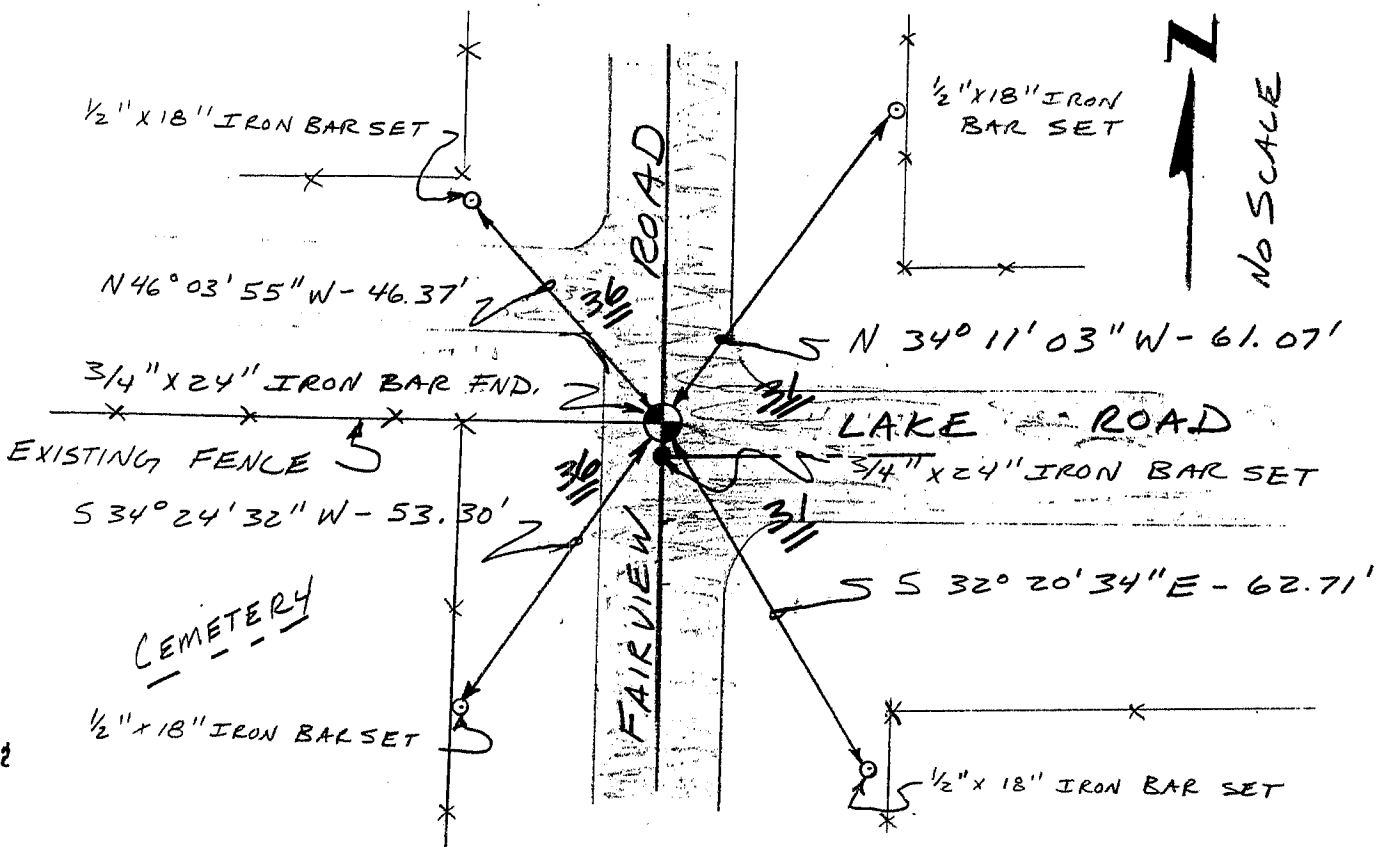
CERTIFIED CORRECT

Larry L. Austin
Registered Land Surveyor

DATE: 10-1-96

TIE SKETCH

Show at least three (3) ties and monument

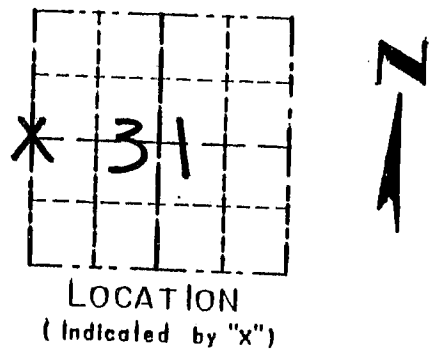


GRANT COUNTY

Survey Monument Record

TYPE OF MONUMENT 3/4" X 24" IRON BAR SET
 STATE PLANE COORDINATES: N _____
 E _____
 ELEVATION — M.S.L. DATUM: _____
 THETA ANGLE: _____
 FIELD BOOK: 96-08
 PAGE _____

CORNER NO. 114
 SECTION 31
 TOWN 5N
 RANGE 1W

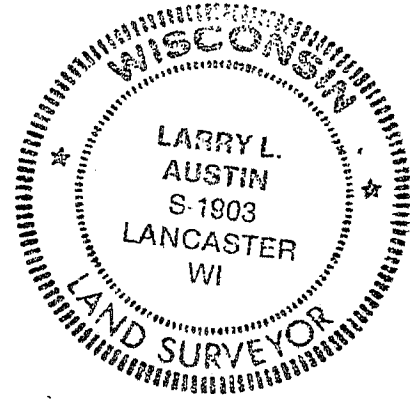


BASIS FOR MONUMENT LOCATION

(Use reverse side if necessary)

CORNER SET IN 1832 BY SIBLEY. NO RECORD OF SURVEY SINCE ORIGINAL SURVEY. CORNER SET AT 1/2 OF THE OFFSET AT THE NW CORNER OF THE SECTION; VERIFIED ITS LOCATION USING EDM METHODS.

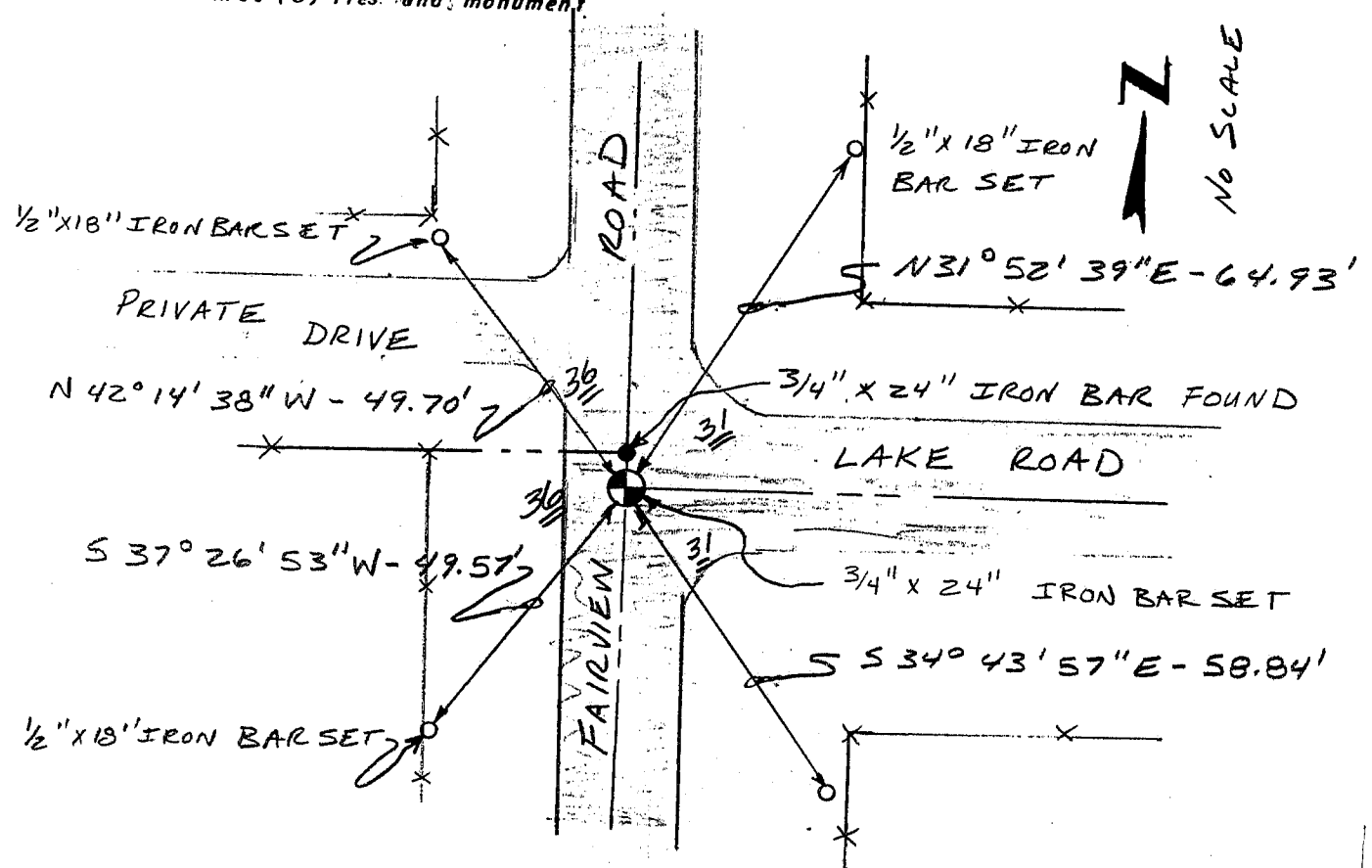
SEAL:



CERTIFIED CORRECT
Larry L. Austin
 Registered Land Surveyor
 DATE: 10-1-96

TIE SKETCH

Show at least three (3) ties and monument.



CORNER DESCRIPTION: W 1/4 CORNER, SECTION 31, T 5 N, R 1 W

STATE PLANE COORDINATES: N _____, E _____

THETA ANGLE: _____

HORIZONTAL DATUM: WISCONSIN STATE PLANE COORDINATE SYSTEM, SOUTH ZONE

EVIDENCE: RESTORED CORNER BETWEEN NW CORNER AND SW CORNER OF SECTION 31 T5N R1W, MEASURED WITH EDM TRANSECTORS

MONUMENT: FOUND , PLACED

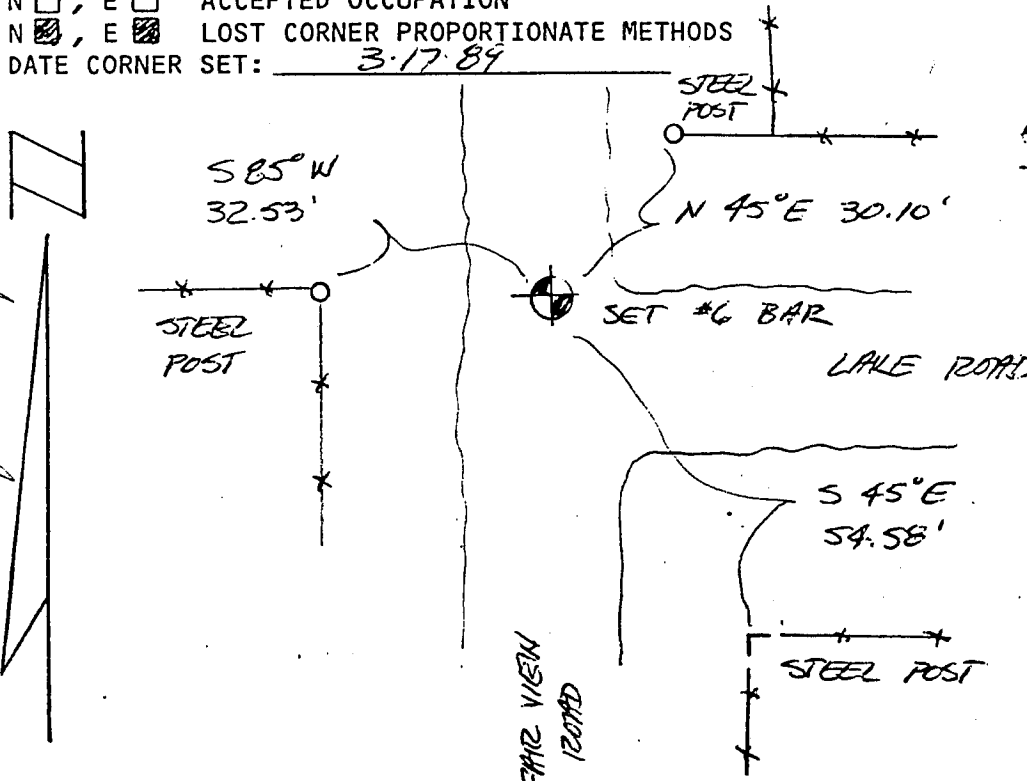
METHOD OF RESTORATION (RE-ESTABLISHMENT):

- ACCEPTED EXISTING MONUMENT
- N , E ACCEPTED OCCUPATION
- N , E LOST CORNER PROPORTIONATE METHODS

DATE CORNER SET: 3-17-89

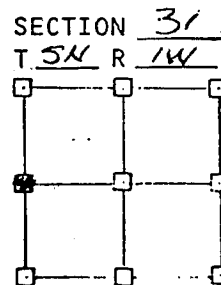
LEGEND

- ▲ SET #6 REBAR, 113 LBS PER LINEAL FT MIN WT
- SET "X24" IRON PIPE, 113 LBS PER LINEAL FT MIN WT
- SET 2" X30" IRON PIPE, 365 LBS PER LINEAL FT MIN WT
- FOUND 1" IRON PIPE
- FOUND 2" IRON PIPE
- FOUND R/R SPIKE
- SET R/R SPIKE
- ⊙ GOVERNMENT CORNER
- EXISTING FENCE



GRANT COUNTY CLERK
RECEIVED

JUL 26 1989



NOT TO SCALE THIS CONFORMS TO WISCONSIN ADMINISTRATIVE CODE A-F 5.02

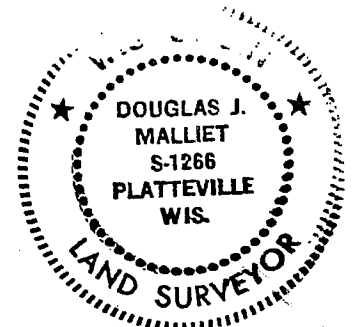
SURVEYOR'S AFFIDAVIT:

STATE OF WISCONSIN)
GRANT COUNTY) SS

I hereby certify that I, DOUGLAS J. MALLIET, have complied with the Wisconsin State Statutes, Statutes of the United States, and the rules and regulations made by the Secretary of the Interior in the location of the corner shown above.

DATE OF SURVEY: 3-17-89

Douglas J. Malliet
REGISTERED LAND SURVEYOR
1246



D. F. BURBACH MUNICIPAL & CIVIL ENGINEERS

410 NORTH SECOND STREET • PLATTEVILLE, WISCONSIN 53818 • (608) 348-3262