

U.S. PUBLIC LAND SURVEY MONUMENT RECORD - GRANT COUNTY, WI

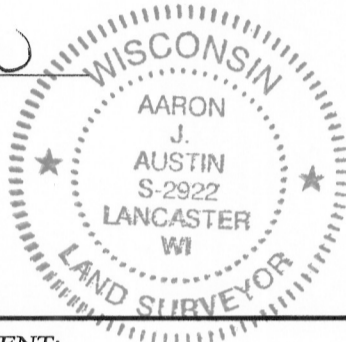
Section 35, Town 5 North Range 2 West, Town of Liberty

CERTIFICATE:

I, Aaron J. Austin, do hereby certify that the corner location on this record was determined by me and/or under my direct supervision and that this U.S. Public Land Survey Monument Record is correct and complete to the best of my knowledge and belief.

Dated this 7th day of December, 2012.

Aaron J. Austin
 Aaron J. Austin, S-2922



● = CORNER LOCATION

HISTORY OF CORNER ESTABLISHMENT:

Corner originally set in 1832 by Lucius Lyon. In 1868 Joel Barber tied to this corner in surveys filed in Book "B", Pages 521, 522 and 523.

DESCRIPTION OF CORNER EVIDENCE FOUND:

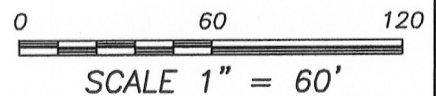
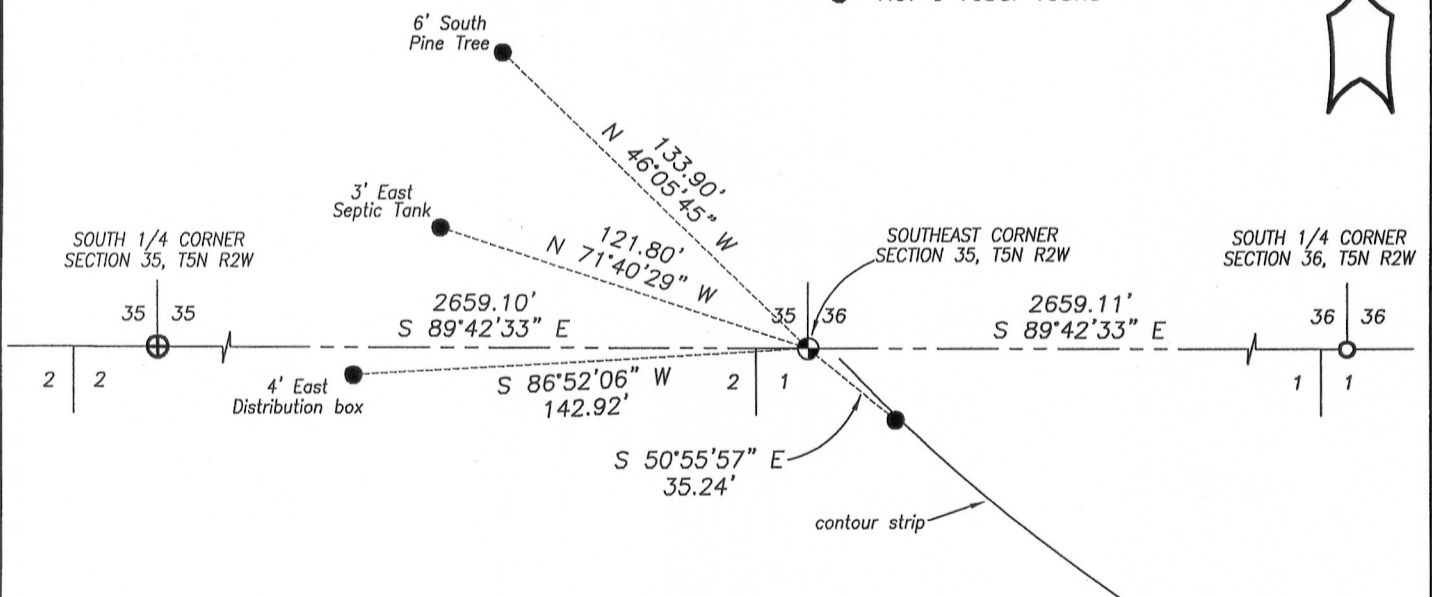
Corner falls in agricultural field. No evidence of the corner was found. I reset the corner proportionally between the South 1/4 corner of Section 35 and the South 1/4 corner of Section 36. I verified this location by E.D.M. and G.P.S. methods.

DESCRIPTION OF CORNER AND WITNESS MONUMENTS, references and accessories used to perpetuate the original or re-established location of this corner. Witnesses to corner location Bobby Sedgwick and Shelby Blindert.

SKETCH:

LEGEND

- ⊕ No. 8 x 24" rebar set with Grant County Aluminum Cap
- Number 4 x 24" Rebar set with red plastic "TIE" cap
- ⊕ No. 8 rebar found with Grant County Aluminum Cap
- No. 6 rebar found



4211 HWY 81 E, LANCASTER, WI 53813
 PHONE: 608-723-6363 FAX: 608-723-6702

JOB NO: 12s143
 G:\T5NR2W\35
 H:\TIE\T5NR2W\123

FIELDBOOK: TDSR
 DRAWN BY: AJ AUSTIN
 CREW: BS-SB