

# GRANT COUNTY CERTIFIED LAND CORNER

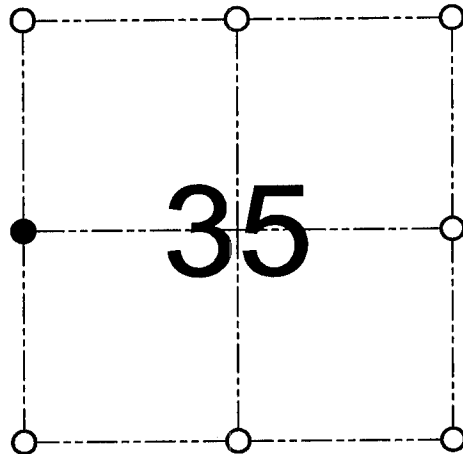
CORNER NUMBER 118

**CERTIFICATE:**

I, Larry L. Austin, do hereby certify that on the 8th day of August, 2000, I found no evidence of the West 1/4 corner of Section 35, Town 5 North, Range 2 West, of the 4th Principal Meridian, and I re-established said corner according to the Wisconsin statutes as shown and described hereon.

Dated this 3rd day of November, 2000

*Larry L. Austin*  
Larry L. Austin S-1903



● = CORNER LOCATION  
WEST 1/4 CORNER OF SECTION 35, T 5 N R 2 W TOWN OF LIBERTY

**HISTORY OF ORIGINAL CORNER ESTABLISHMENT:**

Corner was originally set in 1832 by Harvey Parke.  
In 1868 Joel Barber measured to the corner.

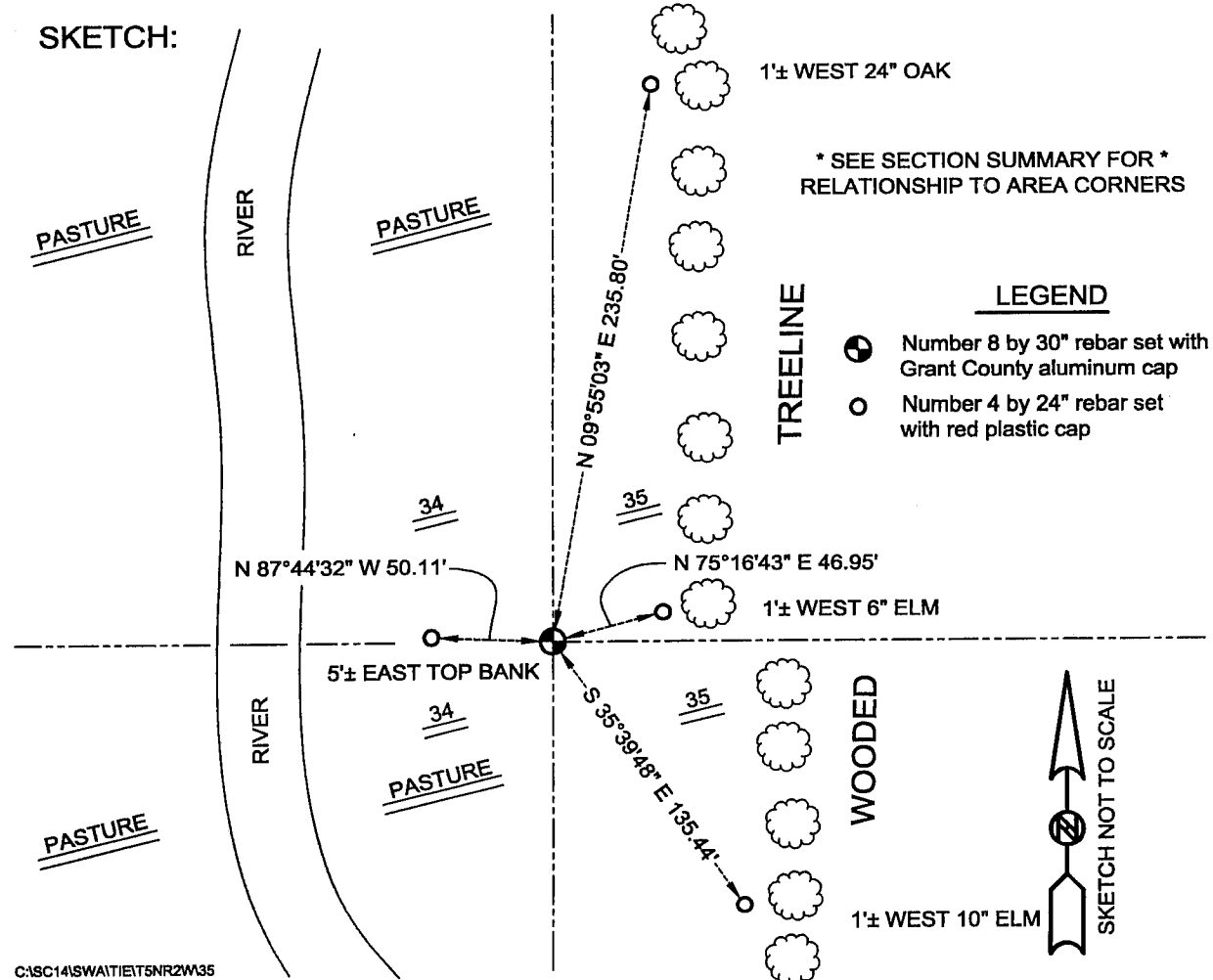
**DESCRIPTION OF CORNER EVIDENCE FOUND:**

I found no evidence of the location of this corner.  
I reset it's location proportionately along the West line of Section 35.  
Verified it's location using EDM & GPS methods.

**DESCRIPTION OF CORNER AND WITNESS MONUMENTS, references and accessories used to perpetuate the original or re-established location of this corner**

WITNESS TO THE CORNER LOCATION: SHELBY BLINDERT & BOBBY SEDGWICK

**SKETCH:**



\* SEE SECTION SUMMARY FOR \*  
RELATIONSHIP TO AREA CORNERS

**LEGEND**

- Number 8 by 30" rebar set with Grant County aluminum cap
- Number 4 by 24" rebar set with red plastic cap



C:\SC14\SWAIT\ET5NR2W35