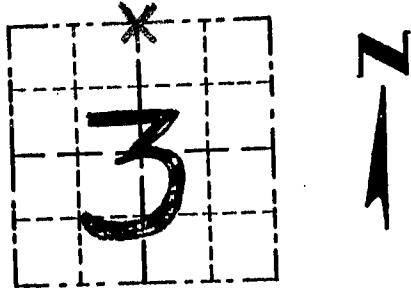


Survey Monument Record

TYPE OF MONUMENT COUNTY MONUMENT  
STATE PLANE COORDINATES: N \_\_\_\_\_  
E \_\_\_\_\_  
ELEVATION — M.S.L. DATUM: \_\_\_\_\_  
THETA ANGLE: \_\_\_\_\_  
FIELD BOOK: \_\_\_\_\_  
PAGE \_\_\_\_\_

CORNER NO. 6  
SECTION 3  
TOWN 4 N  
RANGE 2 W  
N 1/4 COR



LOCATION  
(Indicated by "X")

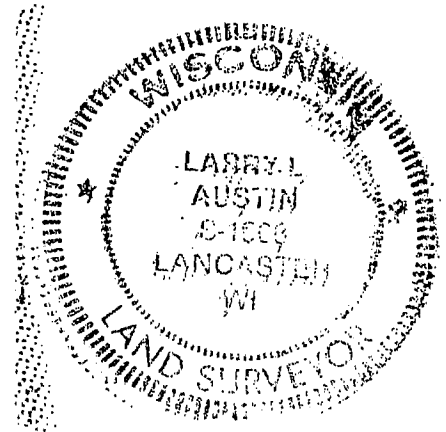
BASIS FOR MONUMENT LOCATION

(Use reverse side if necessary)

Show info such as: History of corner, with reference to Vol. and pg., dates, surveyor; exact description of monument replaced; if location computed, by taped or EDM traverse; landowner, remarks, etc.

NE & NW COR. ORIGINALLY SET IN 1833  
BY R. CLARK; NO RECORD FOUND  
OF THE CORNER SINCE THE  
ORIGINAL SURVEYS; I SET  
THE CORNER ON THE SOUTH LINE  
OF SEC 34 & AT THE PROPOR  
TIONED DIST FROM A FOUND PIPE  
AT THE S 1/4 COR. OF SEC. 34

SEAL:



CERTIFIED CORRECT

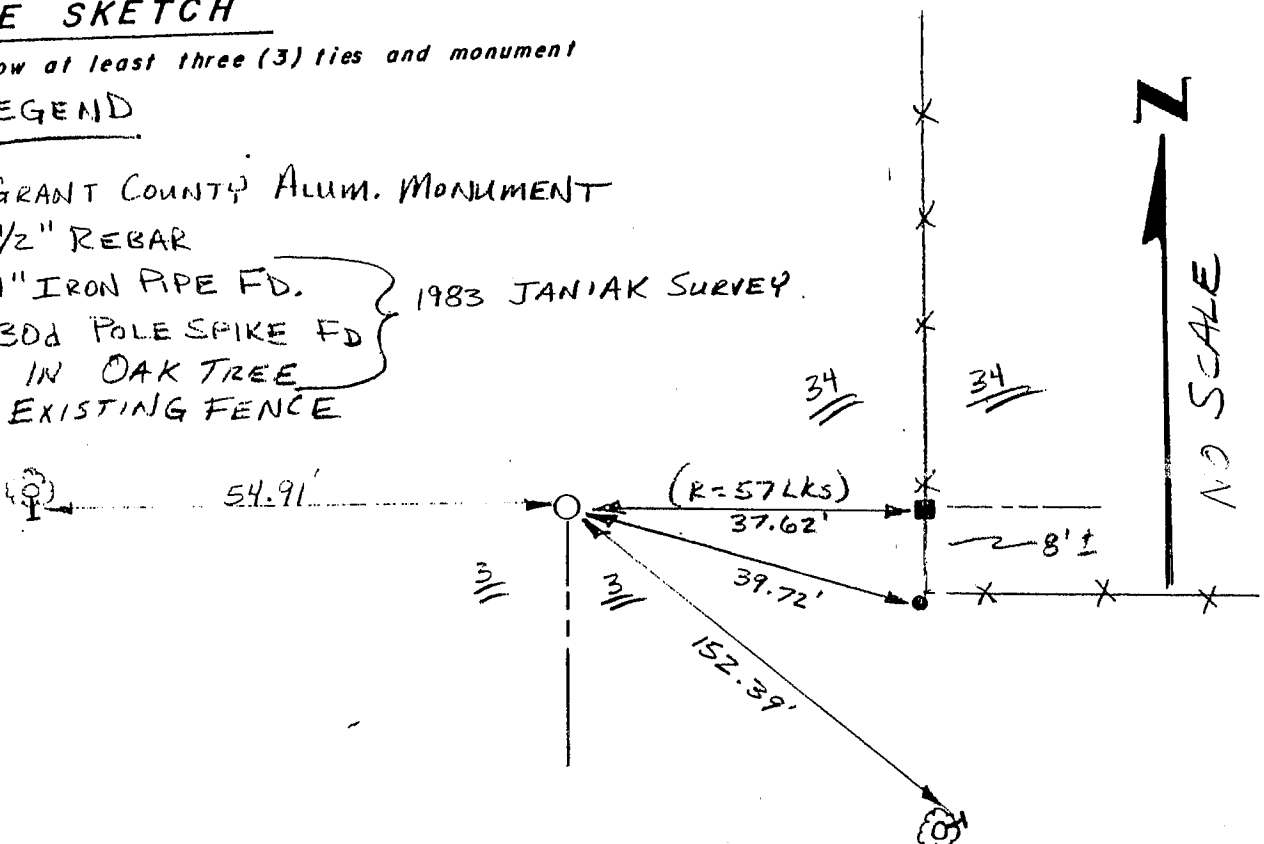
Larry L. Austin  
Registered Land Surveyor  
DATE: 2/16/95

TIE SKETCH

Show at least three (3) ties and monument

LEGEND

- GRANT COUNTY ALUM. MONUMENT
  - 1/2" REBAR
  - 1" IRON PIPE FD.
  - ⊙ 30d POLE SPIKE FD. IN OAK TREE
  - \*-\* EXISTING FENCE
- 1983 JANIAK SURVEY



*Survey of Section*

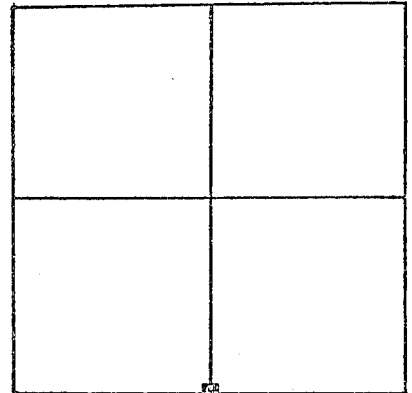
U. S. PUBLIC LAND SURVEY MONUMENT RECORD

Grant County, Wisconsin.

Basis for monument location.

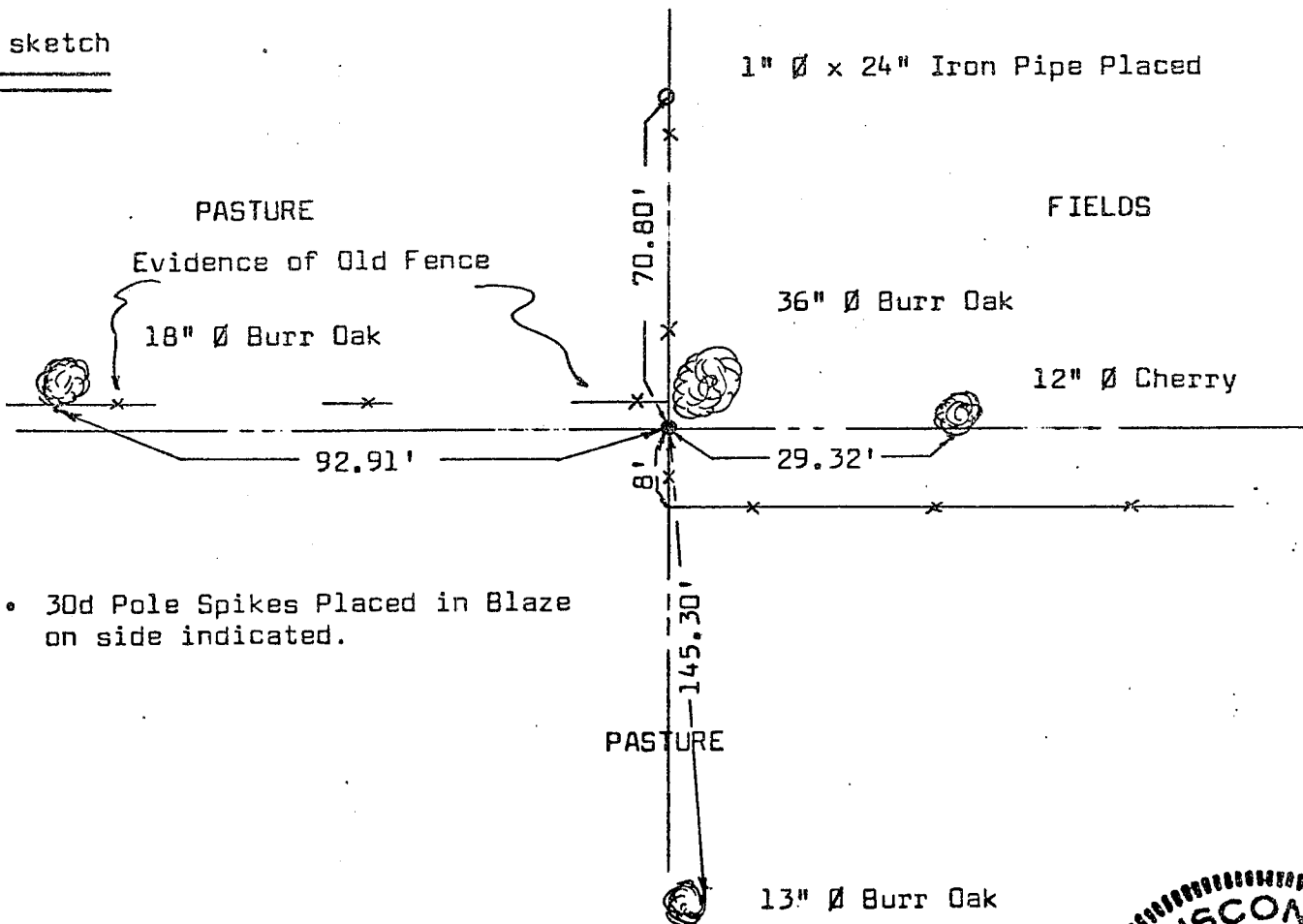
Section 34 T25N, R2W

Researched county survey records and found no evidence of the corner being monumented since the original government survey. Government survey gave reference to a bearing tree at N 25 E, 8, W. Oak 16, at approximately this location stands a 36" Burr Oak. We could not locate any evidence of any W. Oak in the area. It appears to me that the listed Burr Oak was mistaken for a W. Oak in the Government survey and I monumented the corner using the recorded information from the Government Survey.



Corner Location  
(Indicate by - X )

Tie sketch

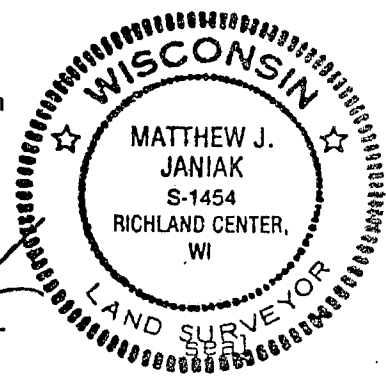


- 30d Pole Spikes Placed in Blaze on side indicated.

I, Matthew J. Janiak Certify that the corner location shown hereon this record was determined by me or under my direction and control and that this U. S. Public Land Survey Monument Record is correct and complete to the best of my knowledge and belief.

9-20-83  
Date

*Matthew J. Janiak*  
Registered Land Surveyor



*P. 126*