

GRANT COUNTY CERTIFIED LAND CORNER

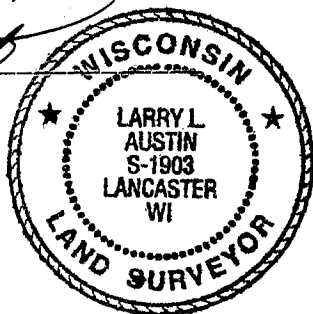
CORNER NUMBER 125

CERTIFICATE:

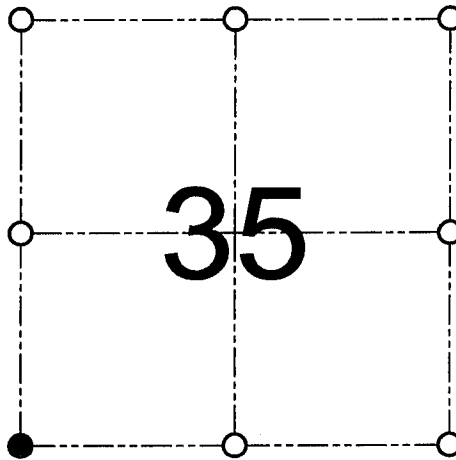
I, Larry L. Austin, do hereby certify that on the 8th day of August, 2000, I found evidence of the Southwest corner of Section 35, Town 5 North, Range 2 West, of the 4th Principal Meridian, and I re-established said corner according to the Wisconsin statutes as shown and described hereon.

Dated this 3rd day of November, 2000

Larry L. Austin
Larry L. Austin S-1903



SEAL



● = CORNER LOCATION

SOUTHWEST CORNER OF
SECTION 35, T 5 N R 2 W
TOWN OF LIBERTY

HISTORY OF ORIGINAL CORNER ESTABLISHMENT:

Corner was originally set in 1832 by Sibley.
No other record of the corner was found.

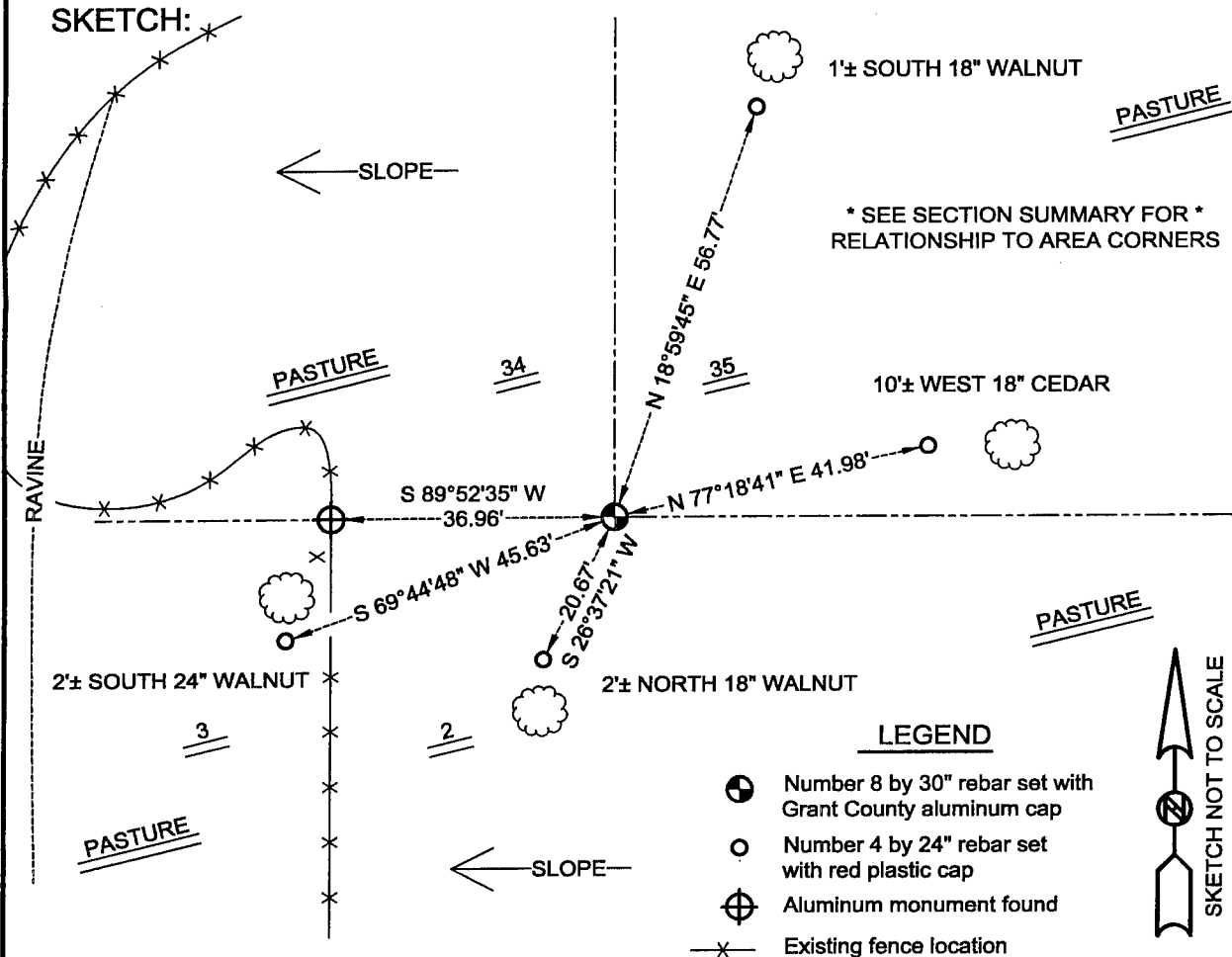
DESCRIPTION OF CORNER EVIDENCE FOUND:

I found an existing Aluminum monument at the Northwest corner of Section 2, T4N R2W.
I set this corner at the recorded offset & verified it's location using EDM & GPS methods.

DESCRIPTION OF CORNER AND WITNESS MONUMENTS, references and accessories used to perpetuate the original or re-established location of this corner

WITNESS TO THE CORNER LOCATION: SHELBY BLINDERT & JERRY SPEILMAN

SKETCH:



LEGEND

- Number 8 by 30" rebar set with Grant County aluminum cap
- Number 4 by 24" rebar set with red plastic cap
- Aluminum monument found
- Existing fence location



GRANT COUNTY CERTIFIED LAND CORNER

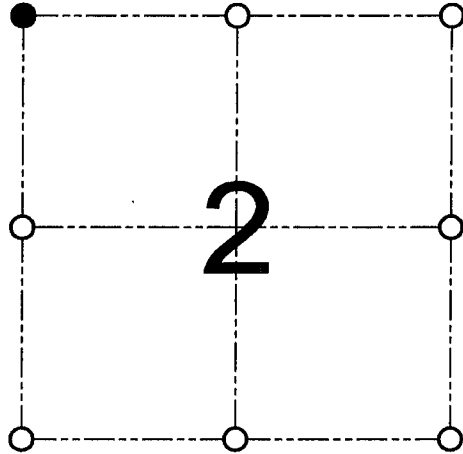
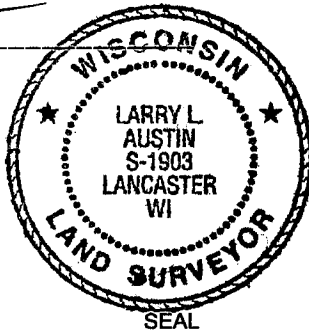
CORNER NUMBER 05

CERTIFICATE:

I, Larry L. Austin, do hereby certify that on the 8th day of August, 2000, I found evidence of the Northwest corner of Section 2, Town 4 North, Range 2 West, of the 4th Principal Meridian, and I re-established said corner according to the Wisconsin statutes as shown and described hereon.

Dated this 3rd day of November, 2000

Larry L. Austin
Larry L Austin S-1903



● = CORNER LOCATION
NORTHWEST CORNER OF SECTION 2, T 4 N R 2 W TOWN OF ELLENBORO

HISTORY OF ORIGINAL CORNER ESTABLISHMENT:

Corner was set in 1833 by Robert Clark. In 1988 I set a Grant County Aluminum monument at this location.

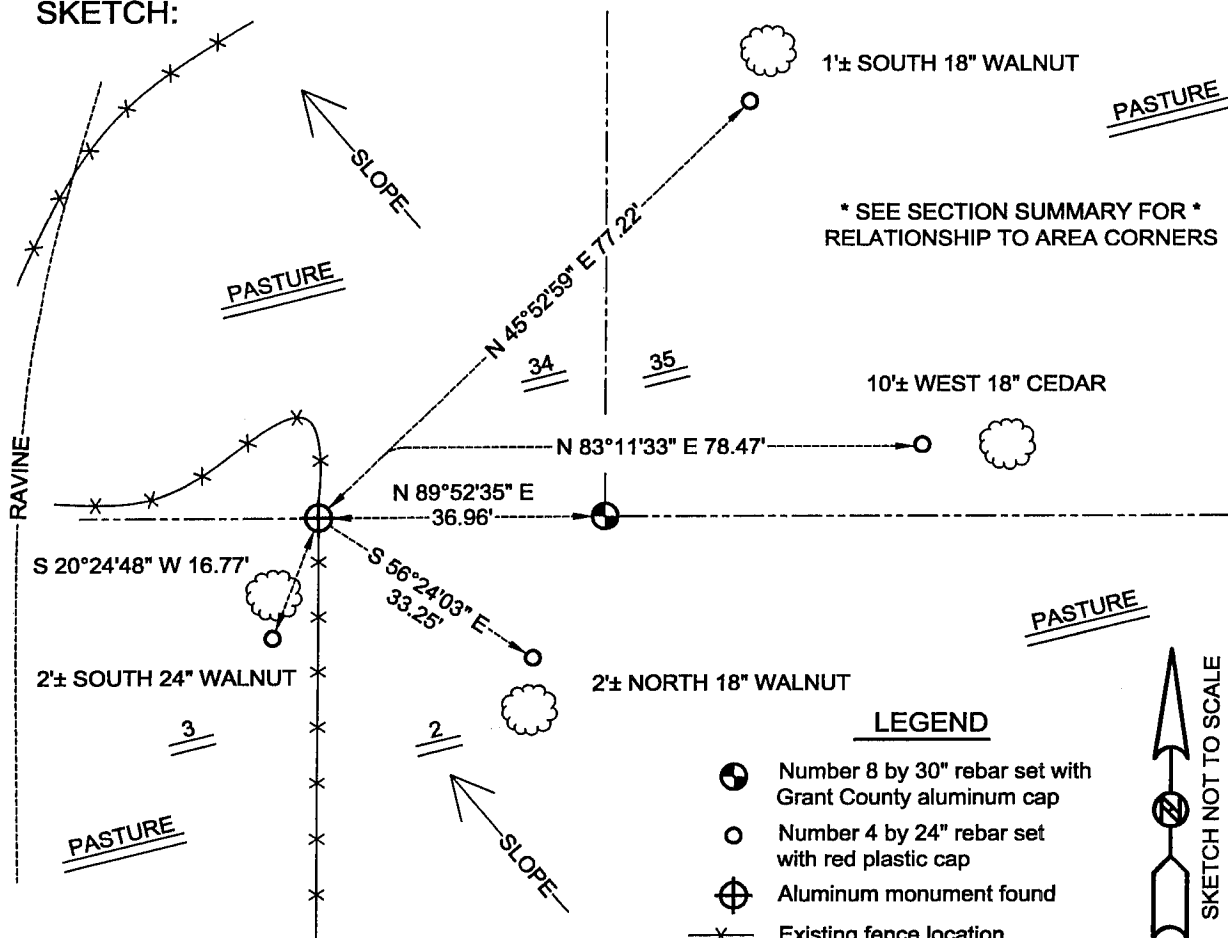
DESCRIPTION OF CORNER EVIDENCE FOUND:

I found the existing Grant County Aluminum monument and accepted it's location after an EDM & GPS traverse of the area.

DESCRIPTION OF CORNER AND WITNESS MONUMENTS, references and accessories used to perpetuate the original or re-established location of this corner

WITNESS TO THE CORNER LOCATION: SHELBY BLINDERT & JERRY SPEILMAN

SKETCH:



LEGEND

- Number 8 by 30" rebar set with Grant County aluminum cap
- Number 4 by 24" rebar set with red plastic cap
- ⊕ Aluminum monument found
- x— Existing fence location

