

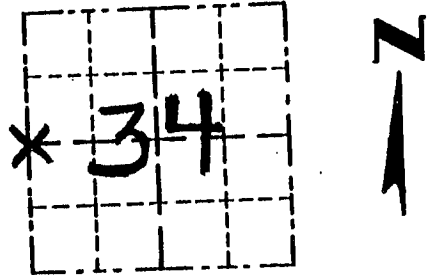
GRANT COUNTY

P. MAR 13 1996

Survey Monument Record

CORNER NO. 117
 SECTION 34
 TOWN 5 N
 RANGE 2 W
W 1/4 COR

TYPE OF MONUMENT COUNTY MONUMENT
 STATE PLANE COORDINATES: N _____
 E _____
 ELEVATION — M.S.L. DATUM: _____
 THETA ANGLE: _____
 FIELD BOOK: _____
 PAGE _____



LOCATION
(Indicated by "X")

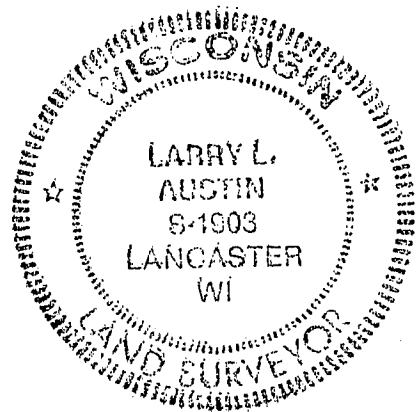
BASIS FOR MONUMENT LOCATION

(Use reverse side if necessary)

Show info such as: History of corner, with reference to Vol. and pg., dates, surveyor; exact description of monument replaced; if location computed, by taped or EDM traverse; landowner, remarks, etc.

SEAL:

ORIG. CORNER SET IN 1832 BY HARVEY PARKE. NO RECORD OF CORNER FOUND SINCE ORIGINAL SURVEYS; I SET THE CORNER AT OCCUPIED LOCATION & VERIFIED BY EDM TRAVERSE OF THE AREA.



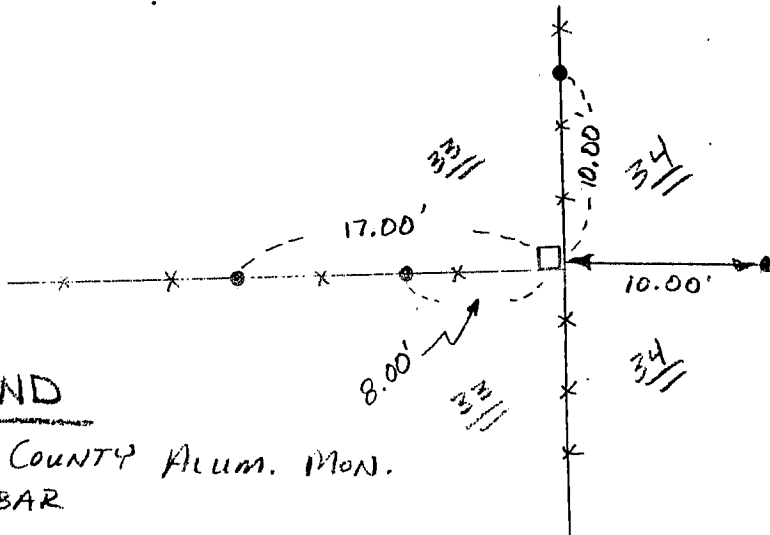
CERTIFIED CORRECT

Larry L. Austin
 Registered Land Surveyor

DATE: 2/16/95

TIE SKETCH

Show at least three (3) ties and monument



LEGEND

- GRANT COUNTY Alum. Mon.
- 1/2" REBAR

* * * EXISTING FENCE

NO SCALE