

GRANT COUNTY CERTIFIED LAND CORNER

CORNER NUMBER 128

CERTIFICATE:

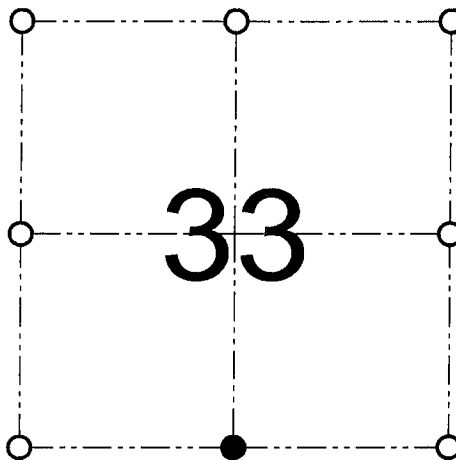
I, Larry L. Austin, do hereby certify that on the 16th day of January, 2000, I found evidence of the South 1/4 corner of Section 33, Town 5 North, Range 2 West, of the 4th Principal Meridian, and I re-established said corner according to the Wisconsin statutes as shown and described hereon.

Dated this 6th day of February, 2001

Larry L. Austin
Larry L. Austin S-1903



SEAL



● = CORNER LOCATION

SOUTH 1/4 CORNER OF
SECTION 33, T 5 N R 2 W
TOWN OF LIBERTY

HISTORY OF ORIGINAL CORNER ESTABLISHMENT:

Corner was originally set in 1832 by Sibley. In 1911 A.W. Appleby tied to the corner with no mention of monumentation. No other record of the corner was found.

DESCRIPTION OF CORNER EVIDENCE FOUND:

I found the existing North 1/4 of Section 4 and set the South 1/4 of Section 33 at the proportioned offset. Verified this location using EDM & GPS methods.

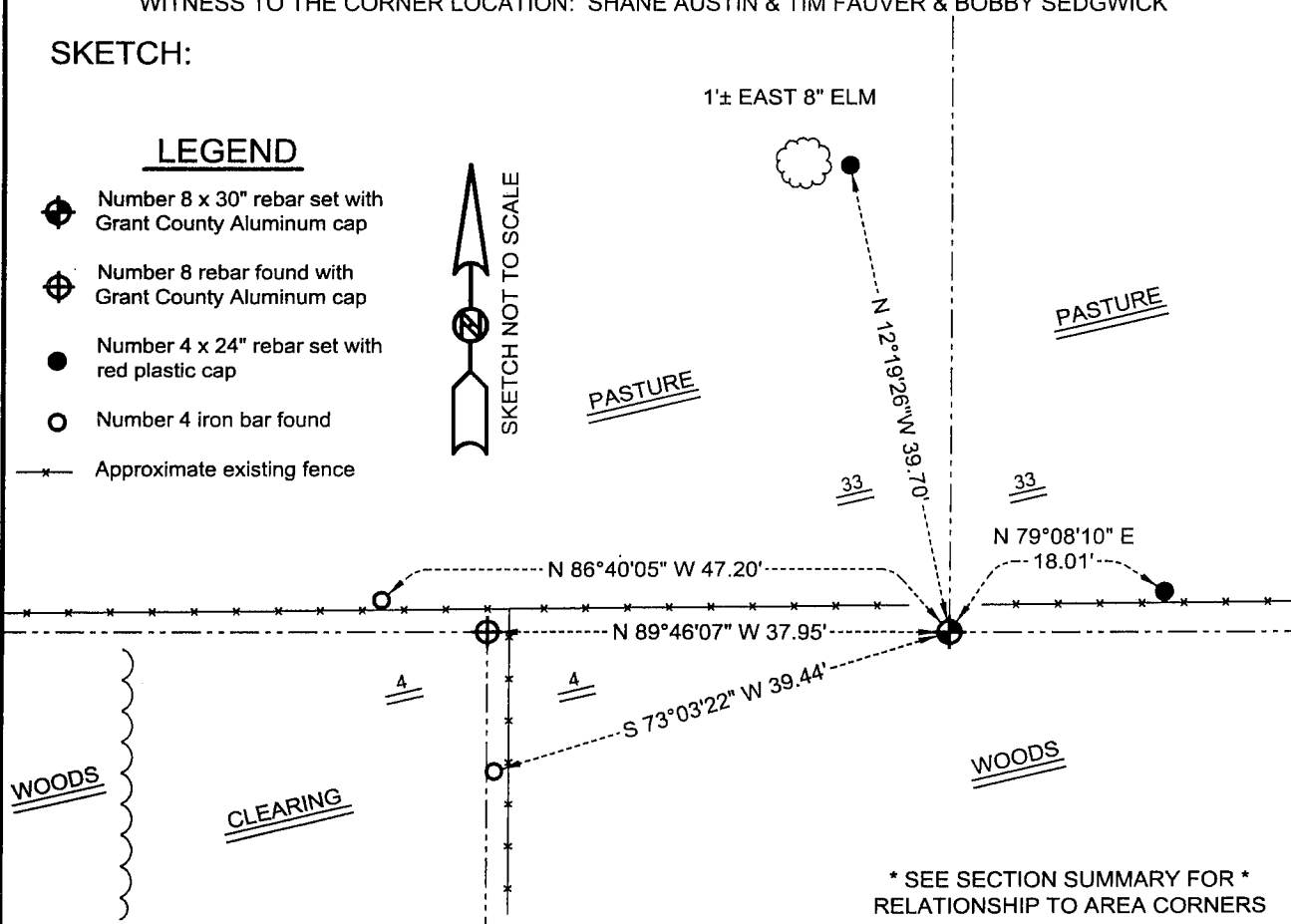
DESCRIPTION OF CORNER AND WITNESS MONUMENTS, references and accessories used to perpetuate the original or re-established location of this corner

WITNESS TO THE CORNER LOCATION: SHANE AUSTIN & TIM FAUVER & BOBBY SEDGWICK

SKETCH:

LEGEND

- ⊕ Number 8 x 30" rebar set with Grant County Aluminum cap
- ⊕ Number 8 rebar found with Grant County Aluminum cap
- Number 4 x 24" rebar set with red plastic cap
- Number 4 iron bar found
- Approximate existing fence



* SEE SECTION SUMMARY FOR *
RELATIONSHIP TO AREA CORNERS

AUSTIN ENGINEERING, LLC
4211 HWY 81 E, LANCASTER, WI 53813
PHONE 608-723-6363 FAX 608-723-6702

FIELDBOOK: SDR33, 2042
G:\T5NR2W\32
C:\SC14\SWA\TIE\T5NR2W\128

DRAWN BY: SW AUSTIN
APPROVED: LL AUSTIN
CREW: BS - SB - SA - TF

MAR 14 2001

128

GRANT COUNTY

PAID MAR 13 1996

Survey Monument Record

TYPE OF MONUMENT COUNTY MONUMENT

STATE PLANE COORDINATES: N _____
E _____

ELEVATION — M.S.L. DATUM: _____

THETA ANGLE: _____

FIELD BOOK: _____

PAGE _____

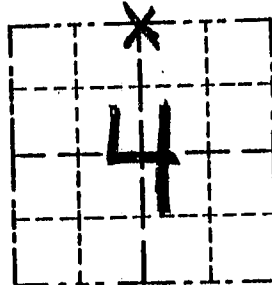
CORNER NO. 8

SECTION 4

TOWN 4N

RANGE 2W

N 1/4 COR



LOCATION
(Indicated by "X")

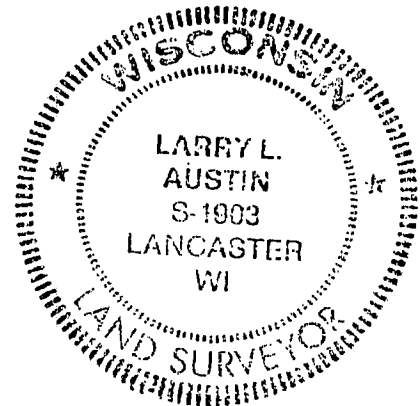
BASIS FOR MONUMENT LOCATION

(Use reverse side if necessary)

Show info such as: History of corner, with reference to Vol. and pg., dates, surveyor; exact description of monument replaced; if location computed, by taped or EDM traverse; landowner, remarks, etc.

SEAL:

NW & NE CORNERS ORIGINALLY SET BY ROBERT CLARK IN 1833; NO RECORD OF THIS CORNER SINCE ORIGINAL SURVEYS; I SET THIS CORNER AT AN OCCUPIED LOCATION & VERIFIED BY EDM TRAVERSE.



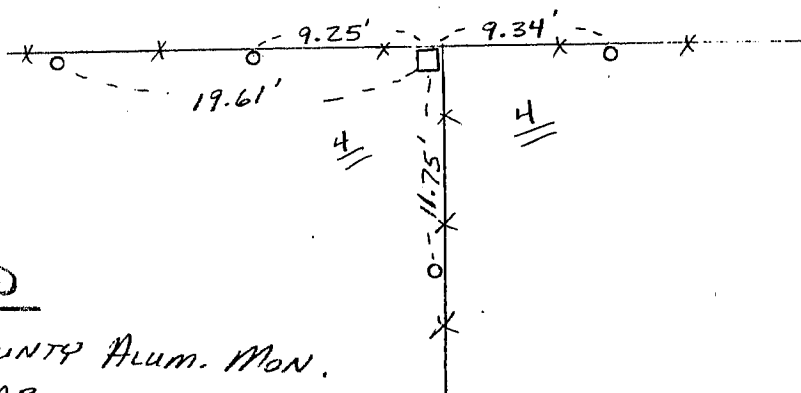
CERTIFIED CORRECT

Larry L. Austin
Registered Land Surveyor

DATE: 2/16/95

TIE SKETCH

Show at least three (3) ties and monument



LEGEND

- GRANT COUNTY Alum. Mon.
- 1/2" REBAR
- X—X— EXISTING FENCE

