

APR 30 2001

7

Paper weight - 32# 25% Rag Ledger (minimum)

U. S. PUBLIC LAND SURVEY MONUMENT RECORD

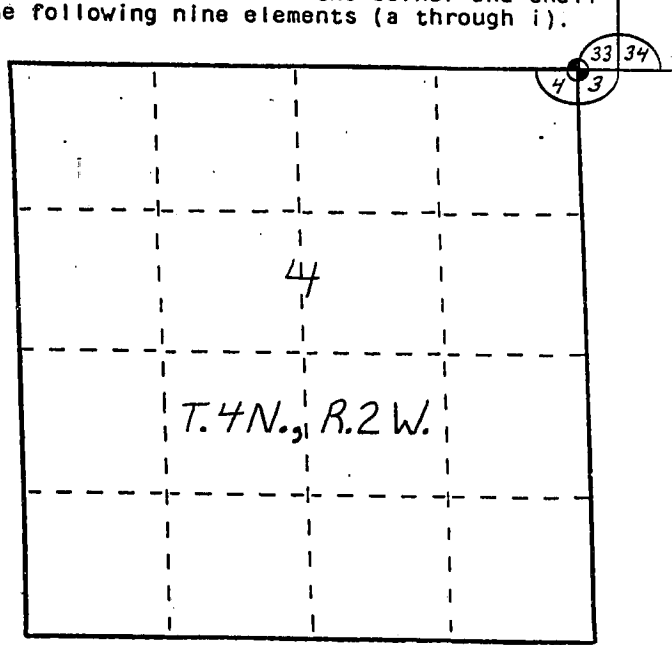
INSTRUCTIONS: This record shall show the location of the corner and shall include all of the following nine elements (a through i).

- (a) Identify the corner by reference to the U.S. public land survey system.
- = Corner monument restored.

The Northeast Corner of Section 4,
 Town 4 North, Range 2 West,
 Ellenboro Township, Grant
 County, Wisconsin.

Grant County Coordinates

$N = 526,982.9'$
 $E = 847,013.7'$

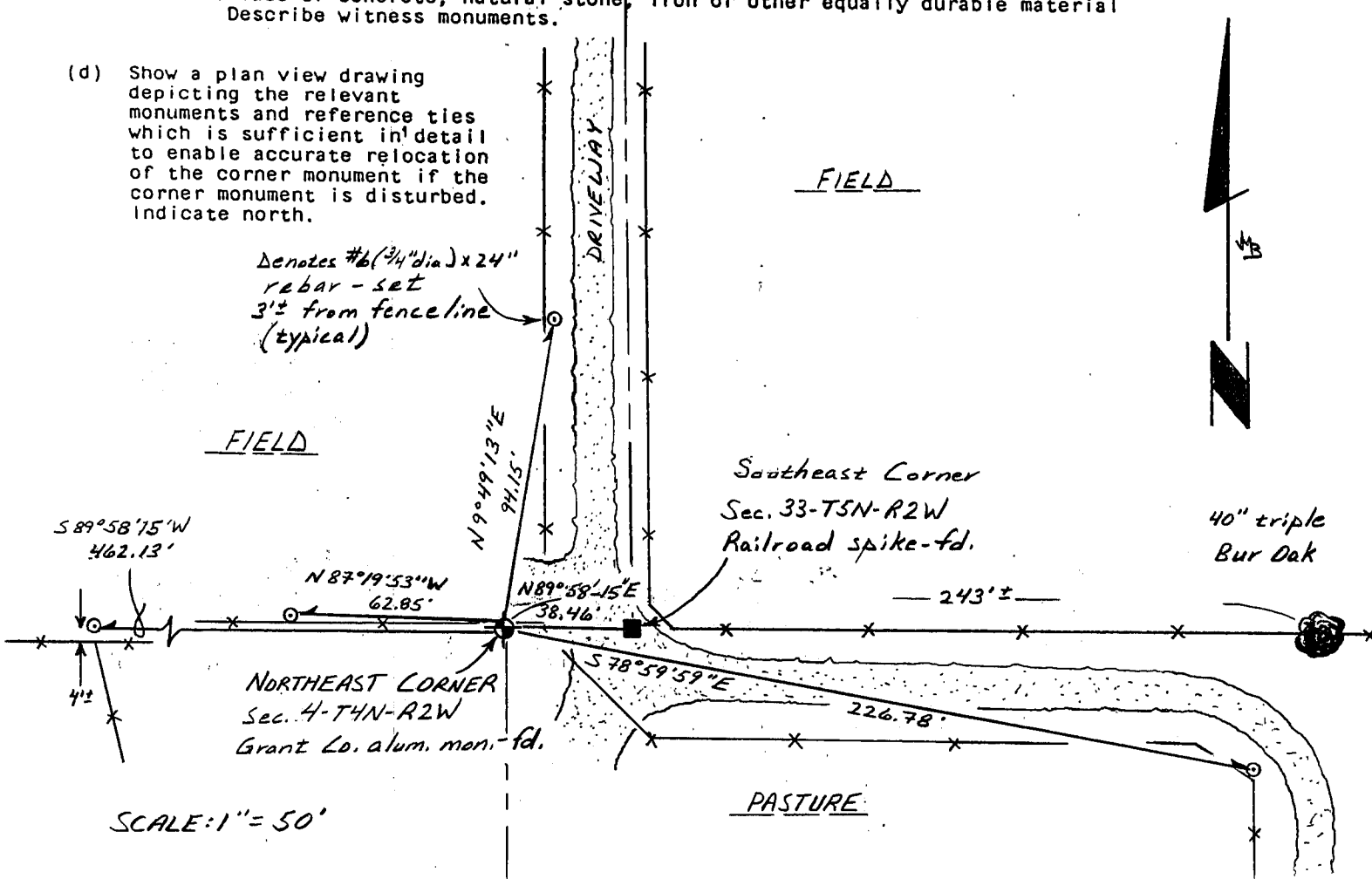


- (b) Describe any record evidence, monument evidence, occupational evidence, testimonial evidence or any other material evidence you considered, and whether the monument was found or placed.

A Grant County aluminum monument was found and accepted as noted on a survey by Larry L. Austin (11/9/1988).

- (c) In the plan view drawing below, provide reference ties to at least 4 witness monuments, or, if the location is within a municipality, to at least 2 witness monuments. (Witness monuments shall be made of concrete, natural stone, iron or other equally durable material. Describe witness monuments.)

- (d) Show a plan view drawing depicting the relevant monuments and reference ties which is sufficient in detail to enable accurate relocation of the corner monument if the corner monument is disturbed. Indicate north.



(e) Describe any material discrepancy between the location of the corner as restored or reestablished and the location of that corner as previously restored or reestablished by distance and direction. Show the discrepancy on the plan view drawing under (d), above. Show the distances between the corner as previously restored or reestablished and (1) the corner as restored or reestablished, and (2) to at least 2 of the witness monuments shown on the drawing in (d), above.

None.

(f) Was the corner restored through acceptance of (1) an obliterated evidence location, or, (2) a found perpetuated location?

A found perpetuated location.

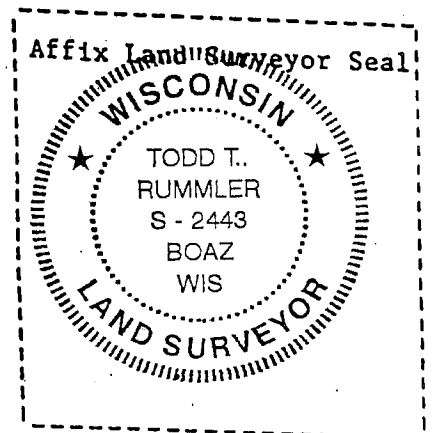
(g&h) Was the corner reestablished through lost corner proportionate methods? If so, show the method, including the directions and distances to other public land survey corners used as evidence or used for proportioning in determining the corner location?

No.

(1) I, Todd T. Rummel, R.L.S. - 2443
(type or print name) certify that the corner location shown on this record was determined by me or under my direction and control and that this U.S. Public Land Survey Monument Record is correct and complete to the best of my knowledge and belief.

Todd T. Rummel
Signature

2/28/04
Date



MAR 14 2001

GRANT COUNTY CERTIFIED LAND CORNER

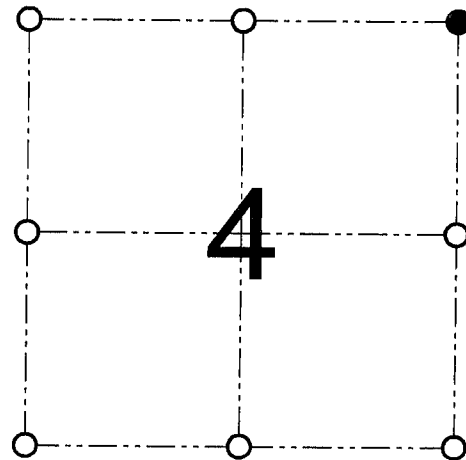
CORNER NUMBER 07

CERTIFICATE:

I, Larry L. Austin, do hereby certify that on the 16th day of January, 2001, I found evidence of the Northeast corner of Section 4, Town 4 North, Range 2 West, of the 4th Principal Meridian, and I re-established said corner according to the Wisconsin statutes as shown and described hereon.

Dated this 6th day of February, 2001

Larry L. Austin
Larry L. Austin S-1903



● = CORNER LOCATION

NORTHEAST CORNER OF
SECTION 4, T 4 N R 2 W
TOWN OF ELLENBORO

HISTORY OF ORIGINAL CORNER ESTABLISHMENT:

Corner was originally set in 1833 by Robert Clark.
In 1988 I set an Aluminum monument at this location.

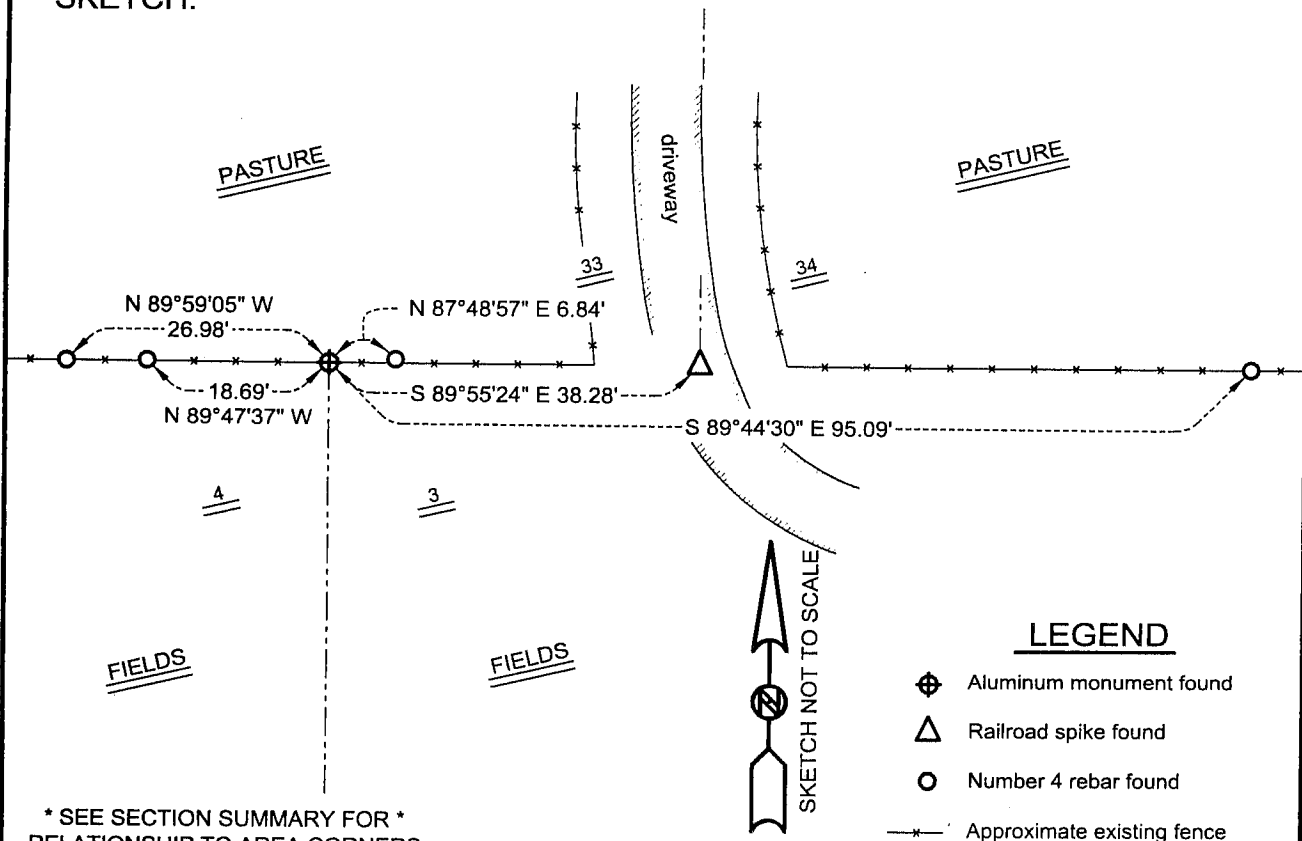
DESCRIPTION OF CORNER EVIDENCE FOUND:

I found the existing Aluminum monument and accepted it's location after an EDM & GPS traverse of the area.

DESCRIPTION OF CORNER AND WITNESS MONUMENTS, references and accessories used to perpetuate the original or re-established location of this corner

WITNESS TO THE CORNER LOCATION: SHANE AUSTIN & BOBBY SEDGWICK

SKETCH:



LEGEND

- ⊕ Aluminum monument found
- △ Railroad spike found
- Number 4 rebar found
- *— Approximate existing fence

* SEE SECTION SUMMARY FOR *
RELATIONSHIP TO AREA CORNERS

AUSTIN ENGINEERING, LLC
4211 HWY 81 E, LANCASTER, WI 53813
PHONE 608-723-6363 FAX 608-723-6702

FIELDBOOK: SDR33, 2042
G:\T5NR2W\32
C:\SC14\SWA\TIE\T5NR2W\108

DRAWN BY: SW AUSTIN
APPROVED: LL AUSTIN
CREW: BS - SB - SA - TF

APR 30 2001

127

Paper weight - 32# 25% Rag Ledger (minimum)

U. S. PUBLIC LAND SURVEY MONUMENT RECORD

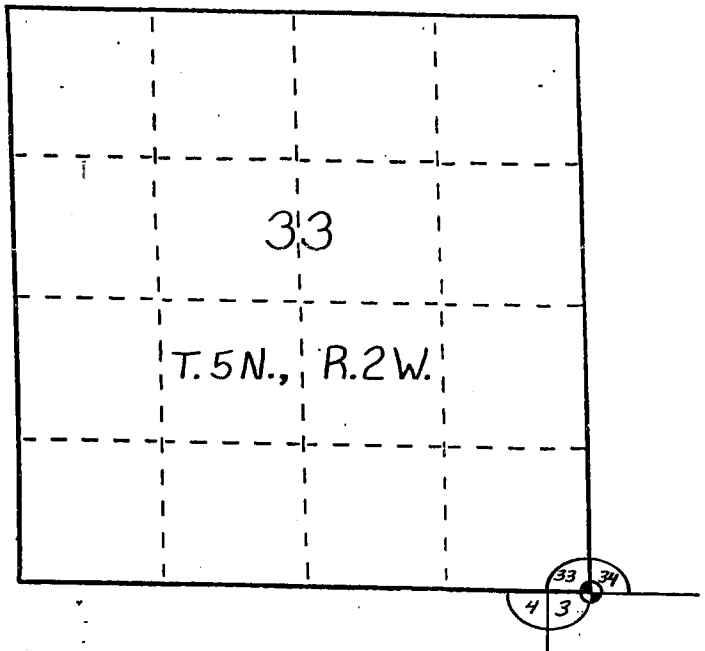
INSTRUCTIONS: This record shall show the location of the corner and shall include all of the following nine elements (a through i).

- (a) Identify the corner by reference to the U.S. public land survey system.
- = Corner monument restored.

The Southwest Corner
of Section 33, Town 5 North,
Range 2 West, Liberty
Township, Grant County,
Wisconsin.

Grant County Coordinates

$N = 526,983.0'$
 $E = 847,052.2'$

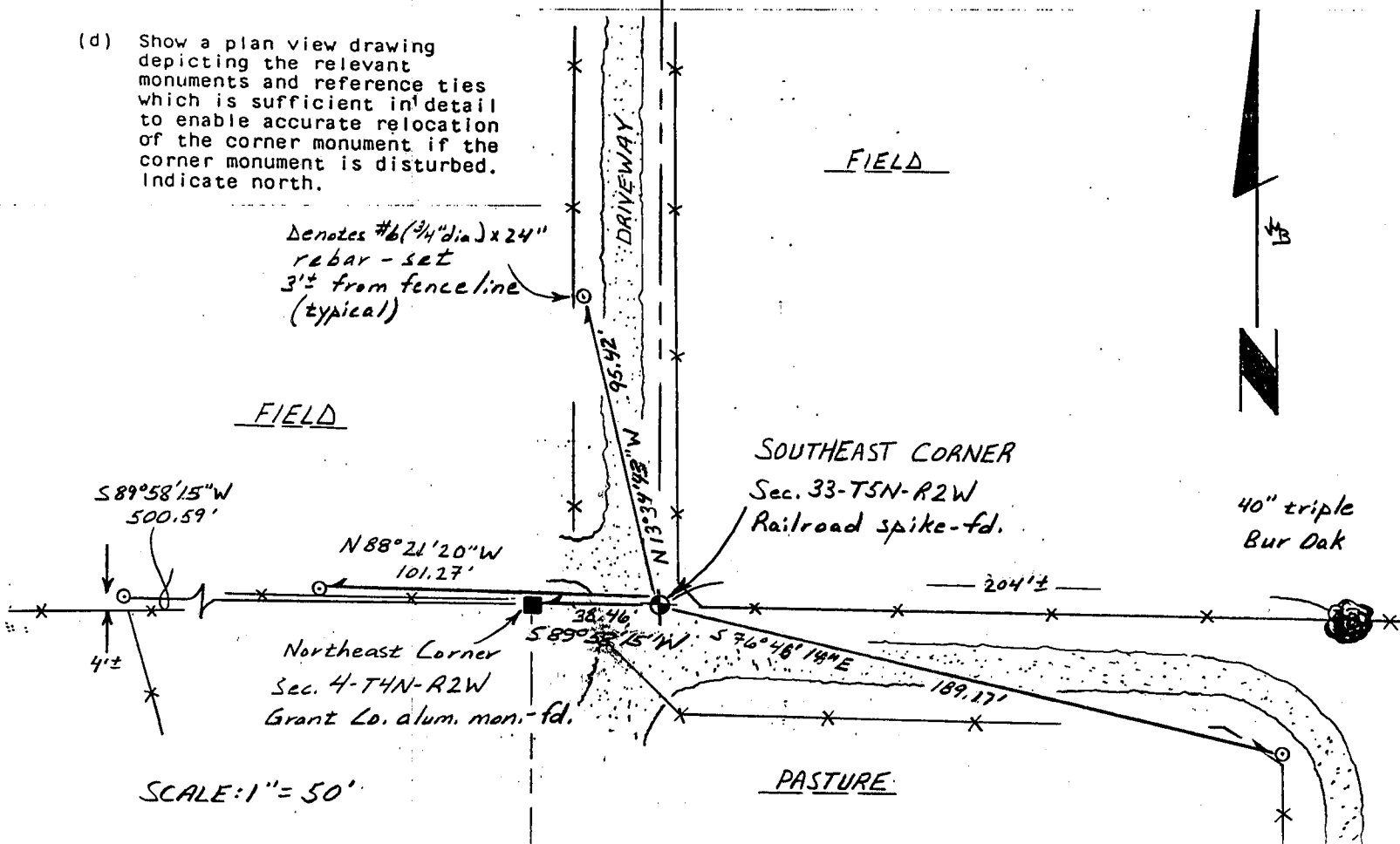


- (b) Describe any record evidence, monument evidence, occupational evidence, testimonial evidence or any other material evidence you considered, and whether the monument was found or placed.

A railroad spike was found and accepted as noted on a survey by Larry L. Austin (11/9/1988).

- (c) In the plan view drawing below, provide reference ties to at least 4 witness monuments, or, if the location is within a municipality, to at least 2 witness monuments. (Witness monuments shall be made of concrete, natural stone, iron or other equally durable material. Describe witness monuments.)

- (d) Show a plan view drawing depicting the relevant monuments and reference ties which is sufficient in detail to enable accurate relocation of the corner monument if the corner monument is disturbed. Indicate north.



(e) Describe any material discrepancy between the location of the corner as restored or reestablished and the location of that corner as previously restored or reestablished by distance and direction. Show the discrepancy on the plan view drawing under (d), above. Show the distances between the corner as previously restored or reestablished and (1) the corner as restored or reestablished, and (2) to at least 2 of the witness monuments shown on the drawing in (d), above.

None.

(f) Was the corner restored through acceptance of (1) an obliterated evidence location, or, (2) a found perpetuated location?

A found perpetuated location.

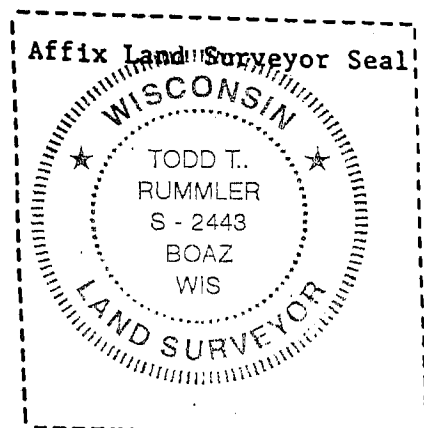
(g&h) Was the corner reestablished through lost corner proportionate methods? If so, show the method, including the directions and distances to other public land survey corners used as evidence or used for proportioning in determining the corner location?

No.

(1) I, Todd T. Rummel, R.L.S. - 2443
(type or print name) certify that the corner location shown on this record was determined by me or under my direction and control and that this U.S. Public Land Survey Monument Record is correct and complete to the best of my knowledge and belief.

Todd T. Rummel
Signature

2/28/01
Date



GRANT COUNTY CERTIFIED LAND CORNER

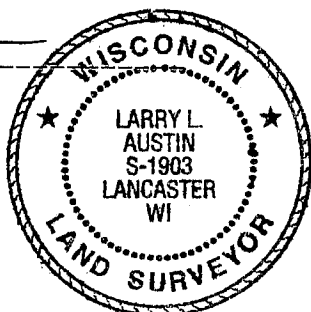
CORNER NUMBER 127

CERTIFICATE:

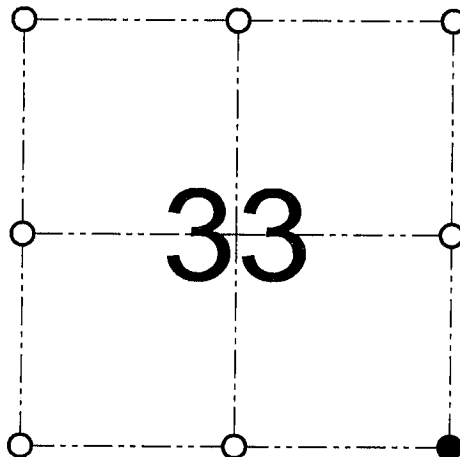
I, Larry L. Austin, do hereby certify that on the 16th day of January, 2001, I found evidence of the Southeast corner of Section 33, Town 5 North, Range 2 West, of the 4th Principal Meridian, and I re-established said corner according to the Wisconsin statutes as shown and described hereon.

Dated this 6th day of February, 2001

Larry L. Austin
Larry L. Austin S-1903



SEAL



● = CORNER LOCATION

SOUTHEAST CORNER OF
SECTION 33, T 5 N R 2 W
TOWN OF LIBERTY

HISTORY OF ORIGINAL CORNER ESTABLISHMENT:

Corner was originally set in 1832 by Sibley. In 1911 A.W. Appleby tied to the corner with no mention of monumentation. In 1978 Kerst tied to the corner with no mention of monument. In 1988 I found an existing Railroad spike.

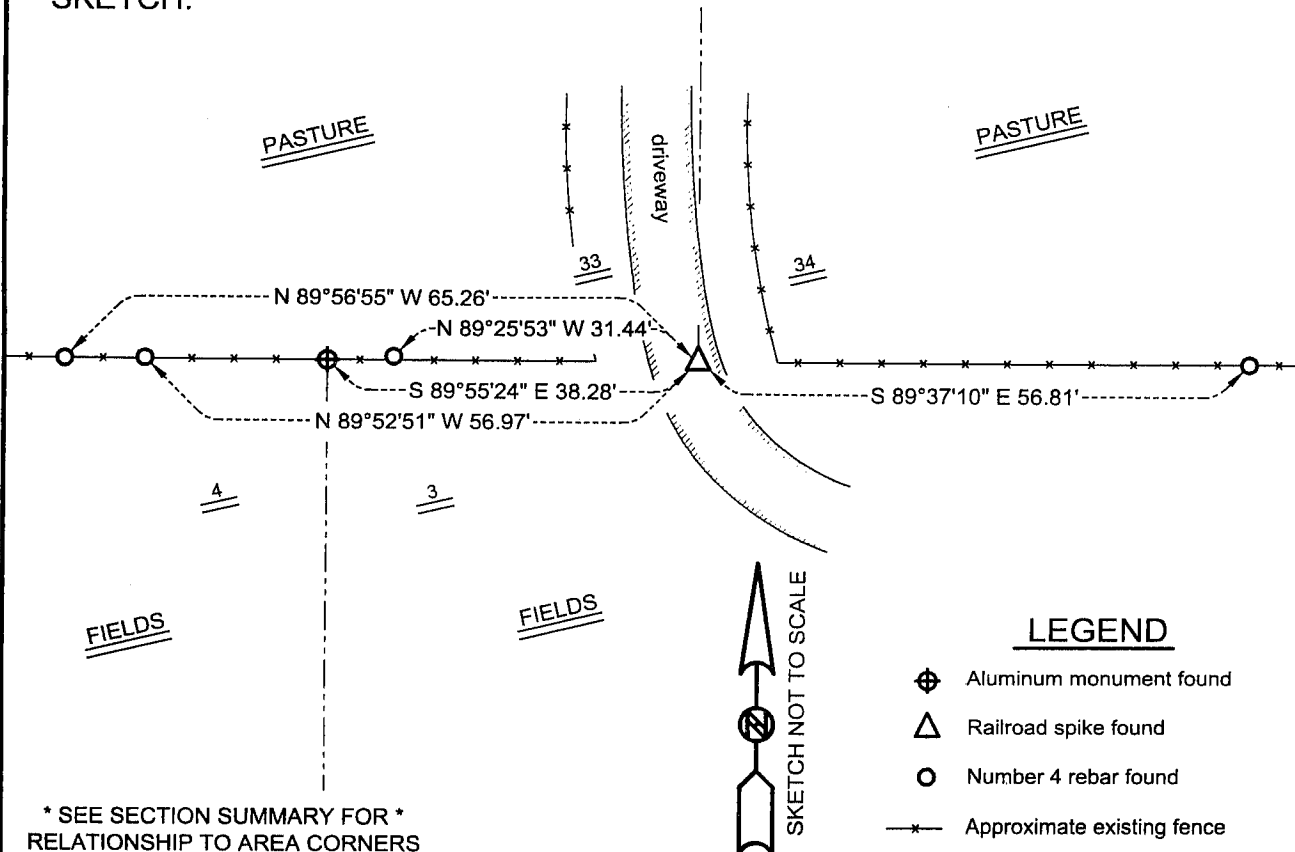
DESCRIPTION OF CORNER EVIDENCE FOUND:

I found the existing Railroad spike and accepted it's location.
I verified this location using EDM & GPS methods.

DESCRIPTION OF CORNER AND WITNESS MONUMENTS, references and accessories used to perpetuate the original or re-established location of this corner

WITNESS TO THE CORNER LOCATION: SHANE AUSTIN & BOBBY SEDGWICK

SKETCH:



LEGEND

- ⊕ Aluminum monument found
- △ Railroad spike found
- Number 4 rebar found
- *— Approximate existing fence

AUSTIN ENGINEERING, LLC 4211 HWY 81 E, LANCASTER, WI 53813 PHONE 608-723-6363 FAX 608-723-6702	FIELDBOOK: SDR33, 2042 G:\T5NR2W\32 C:\SC14\SWA\TIE\T5NR2W\108	DRAWN BY: SW AUSTIN APPROVED: LL AUSTIN CREW: BS - SB - SA - TF
---	--	---

MAR 14 2001

127