

GRANT COUNTY

Survey Monument Record

TYPE OF MONUMENT COUNTY ALUMINUM MON.

STATE PLANE COORDINATES: N _____
E _____

ELEVATION — M.S.L. DATUM: _____

THETA ANGLE: _____

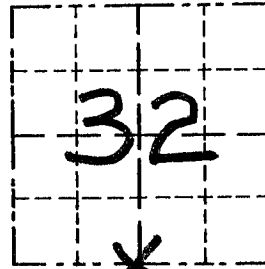
FIELD BOOK: _____

PAGE _____

CORNER NO. 130
SECTION 32
TOWN 5N
RANGE 2W

BASIS FOR MONUMENT LOCATION

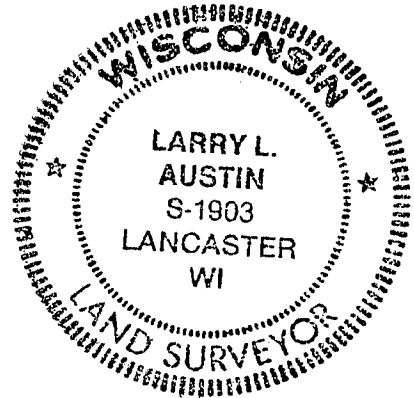
(Use reverse side if necessary)



LOCATION
(Indicated by "X")

CORNER WAS SET AT AN OCCUPIED FENCE CORNER AND VERIFIED BY EDM TRAVERSE OF THE AREA

SEAL:



CERTIFIED CORRECT

Larry L. Austin
Registered Land Surveyor

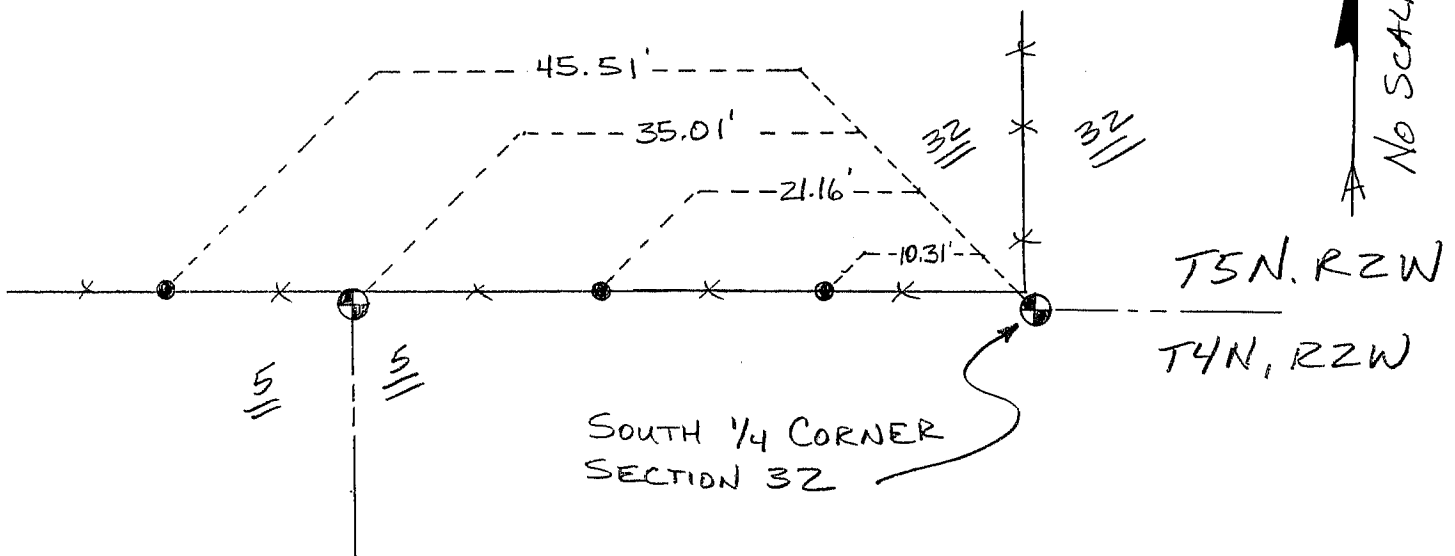
DATE: 12/5/95

TIE SKETCH

Show at least three (3) ties and monument

LEGEND

- ⊕ GRANT COUNTY ALUMINUM MONUMENT
- 1/4" IRON REBAR
- XX EXISTING FENCE



GRANT COUNTY

Survey Monument Record

TYPE OF MONUMENT COUNTY ALUMINUM MON.

STATE PLANE COORDINATES: N _____
E _____

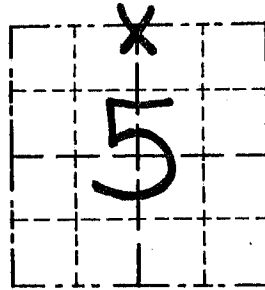
ELEVATION — M.S.L. DATUM: _____

THETA ANGLE: _____

FIELD BOOK: _____

PAGE _____

CORNER NO. 10
SECTION 5
TOWN 4 N
RANGE 2 W



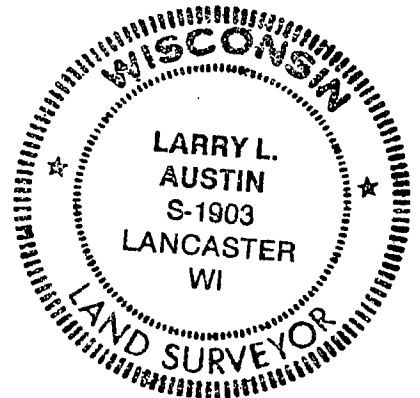
LOCATION
(Indicated by "X")

BASIS FOR MONUMENT LOCATION

(Use reverse side if necessary)

CORNER WAS SET
IN EAST-WEST FENCE-
LINE FOR NORTH-
SOUTH LOCATION AND
WESTERLY OF THE SOUTH 1/4
COR. OF SEC. 32 (T5N, R2W)
AT THE AVERAGES OF
THE JOGS AT THE NE COR
+ NW COR OF SEC. 5 (T4N -
R2W) AND VERIFIED BY EDM
TRAVERSE OF THE AREA

SEAL:



CERTIFIED CORRECT

Larry L. Austin
Registered Land Surveyor

DATE: 12/5/95

TIE SKETCH

Show at least three (3) ties and monument

LEGEND

- ⊙ GRANT COUNTY ALUMINUM MONUMENT
- 1/4" REBAR
- x-x EXISTING FENCE

