

GRANT COUNTY

Survey Monument Record

TYPE OF MONUMENT COUNTY ALUMINUM MON.

STATE PLANE COORDINATES: N _____
E _____

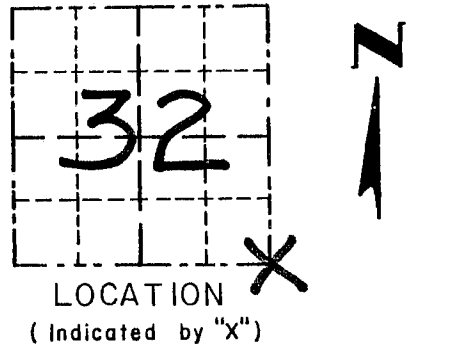
ELEVATION — M.S.L. DATUM: _____

THETA ANGLE: _____

FIELD BOOK: _____

PAGE _____

CORNER NO. 9
SECTION 32
TOWN 5 N
RANGE 2 W

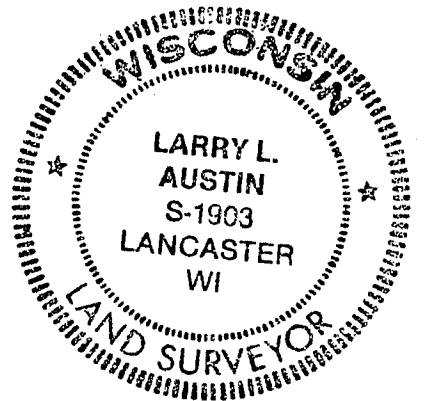


BASIS FOR MONUMENT LOCATION

(Use reverse side if necessary)

CORNER WAS SET AT AN EAST-WEST FENCE FOR NORTH-SOUTH LOCATION AND AT THE RECORDED DISTANCE OF 57 LINKS EAST OF THE NORTHEAST CORNER OF SECTION 5 AND VERIFIED BY EDM TRAVERSE OF THE AREA.

SEAL:



CERTIFIED CORRECT

Larry L. Austin
Registered Land Surveyor

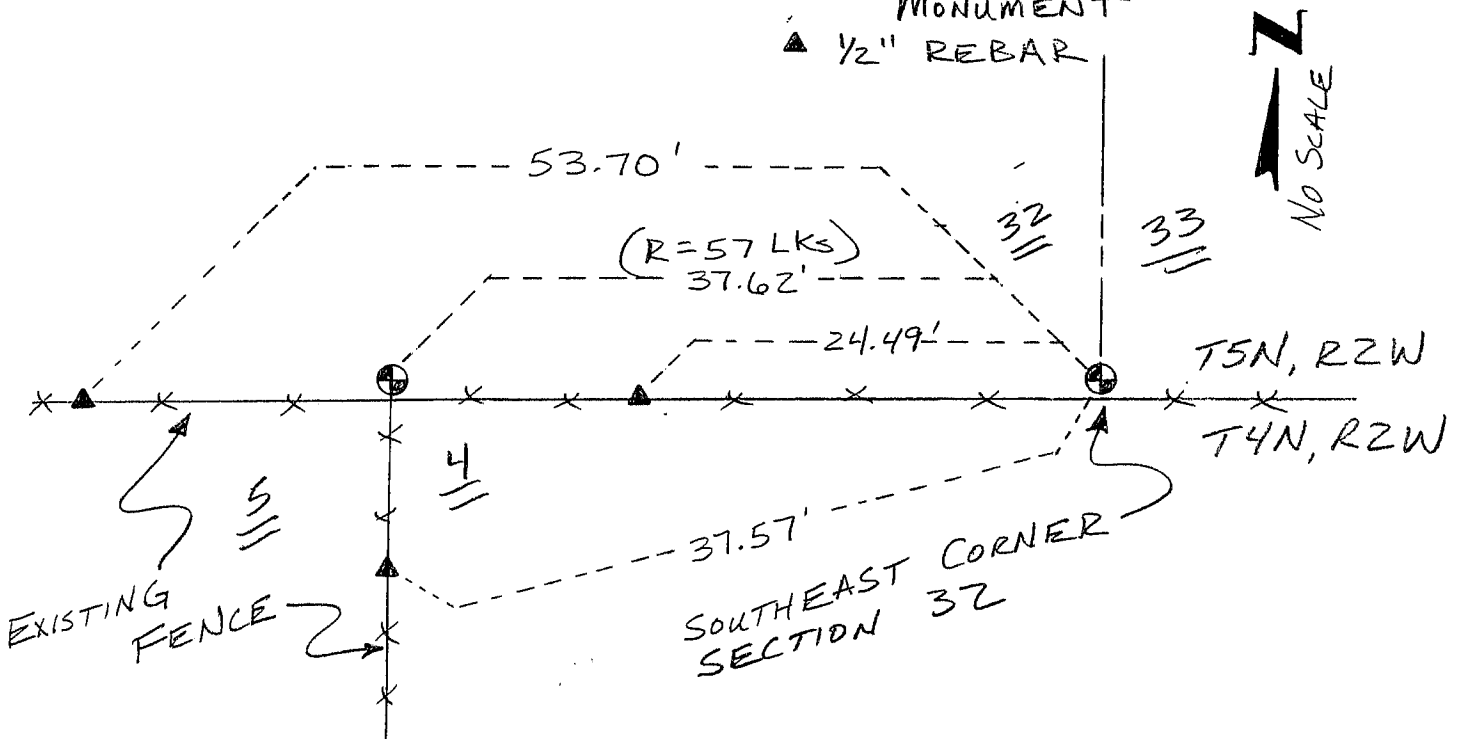
DATE: 12/5/95

TIE SKETCH

Show at least three (3) ties and monument

LEGEND

- ⊕ GRANT COUNTY ALUMINUM MONUMENT
- ▲ 1/2" REBAR



GRANT COUNTY

Survey Monument Record

TYPE OF MONUMENT COUNTY ALUMINUM MON.

STATE PLANE COORDINATES: N _____
E _____

ELEVATION — M.S.L. DATUM: _____

THETA ANGLE: _____

FIELD BOOK: _____

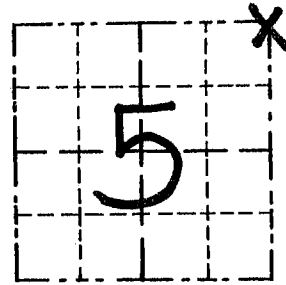
PAGE _____ #

CORNER NO. 9
SECTION 5
TOWN 4 N
RANGE 2 W

BASIS FOR MONUMENT LOCATION

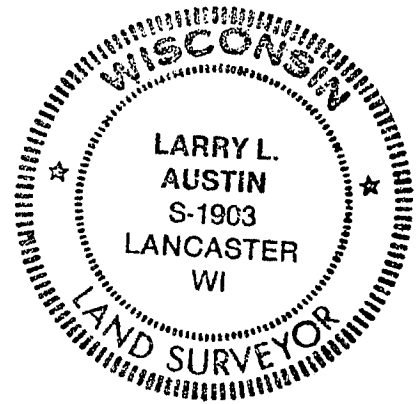
(Use reverse side if necessary)

FOUND AND ACCEPTED A NORTH-SOUTH FENCE FOR THE EAST-WEST LOCATION AND SET THE CORNER ON THE SOUTH LINE OF SECTION 32 OF T5N, R2W. VERIFIED THIS LOCATION BY EDM TRAVERSE OF THE AREA.



LOCATION
(Indicated by "X")

SEAL:



CERTIFIED CORRECT

Larry L. Austin
Registered Land Surveyor

DATE: 12/5/95

TIE SKETCH

Show at least three (3) ties and monument

LEGEND

- ⊙ GRANT COUNTY ALUMINUM MONUMENT
- ▲ 1/2" REBAR

NORTHEAST CORNER OF SECTION 5

