

# GRANT COUNTY CERTIFIED LAND CORNER

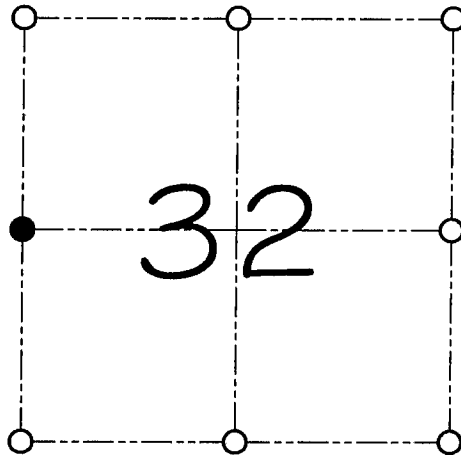
CORNER NUMBER 115

**CERTIFICATE:**

I, Larry L. Austin, do hereby certify that on the 3rd day of March, 2000, I found evidence of the West 1/4 corner of Section 32, Town 5 North, Range 2 West, of the 4th Principal Meridian, and I re-established said corner according to the Wisconsin statutes as shown and described hereon.

Dated this 10th day of March, 2000

*Larry L. Austin*  
Larry L. Austin S-1903



● = CORNER LOCATION

**WEST 1/4 CORNER OF  
SECTION 32, T 5 N R 2 W  
TOWN OF LIBERTY**

**HISTORY OF ORIGINAL CORNER ESTABLISHMENT:**

Corner was originally set in 1832 by Harvey Parke.  
In 1875 Joel Barber measured to the corner.  
No other record of the corner was found.

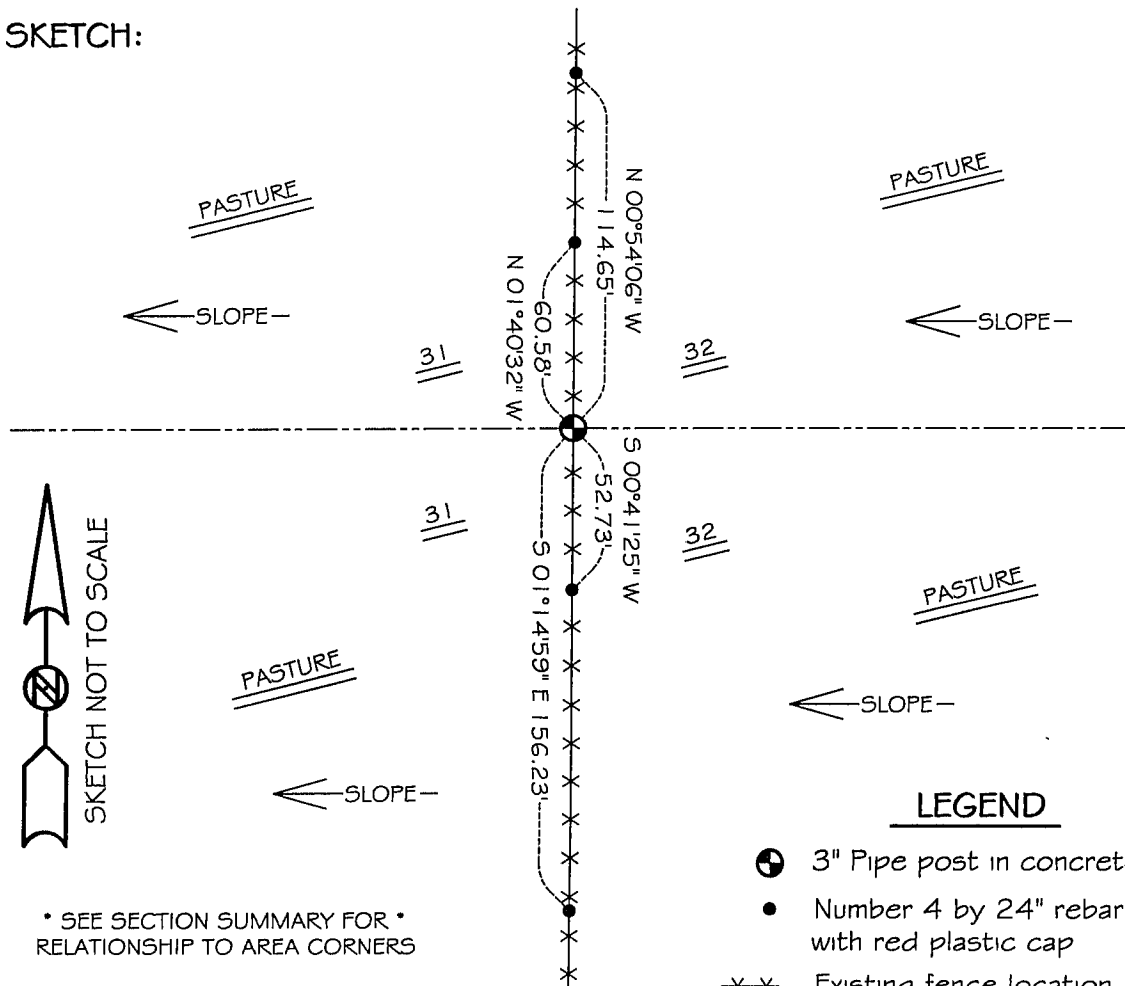
**DESCRIPTION OF CORNER EVIDENCE FOUND:**

I found an existing 3" pipe post in concrete and accepted it's location after an E.D.M. & G.P.S. traverse of the area.

**DESCRIPTION OF CORNER AND WITNESS MONUMENTS, references and accessories used to perpetuate the original or re-established location of this corner**

WITNESS TO THE CORNER LOCATION: SHANE AUSTIN ; SHAWN BEHREND

**SKETCH:**



\* SEE SECTION SUMMARY FOR \*  
RELATIONSHIP TO AREA CORNERS