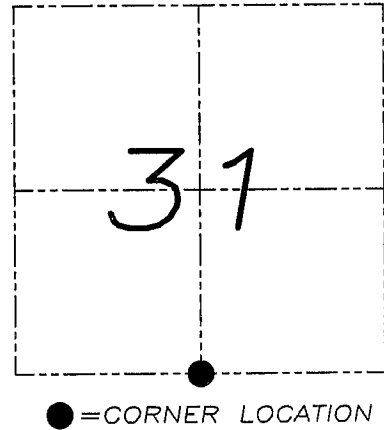
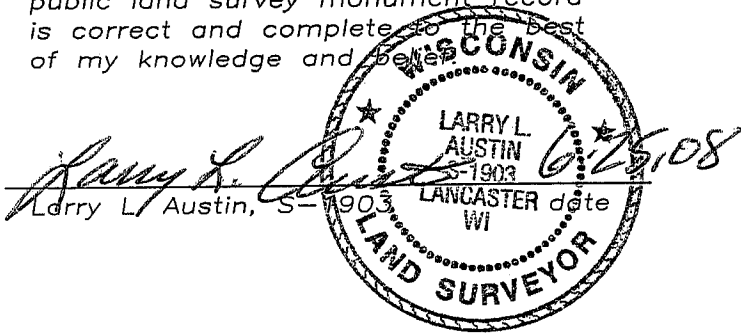


# U.S. PUBLIC LAND SURVEY MONUMENT RECORD

Section 31, Town 5 North Range 2 West, Town of Liberty, Grant County, Wisconsin

## CERTIFICATE

I, Larry L. Austin, do hereby certify that the corner location on this record was determined by me and/or under my direct supervision and that this U.S. public land survey monument record is correct and complete to the best of my knowledge and belief.



## HISTORY OF CORNER

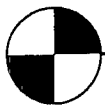
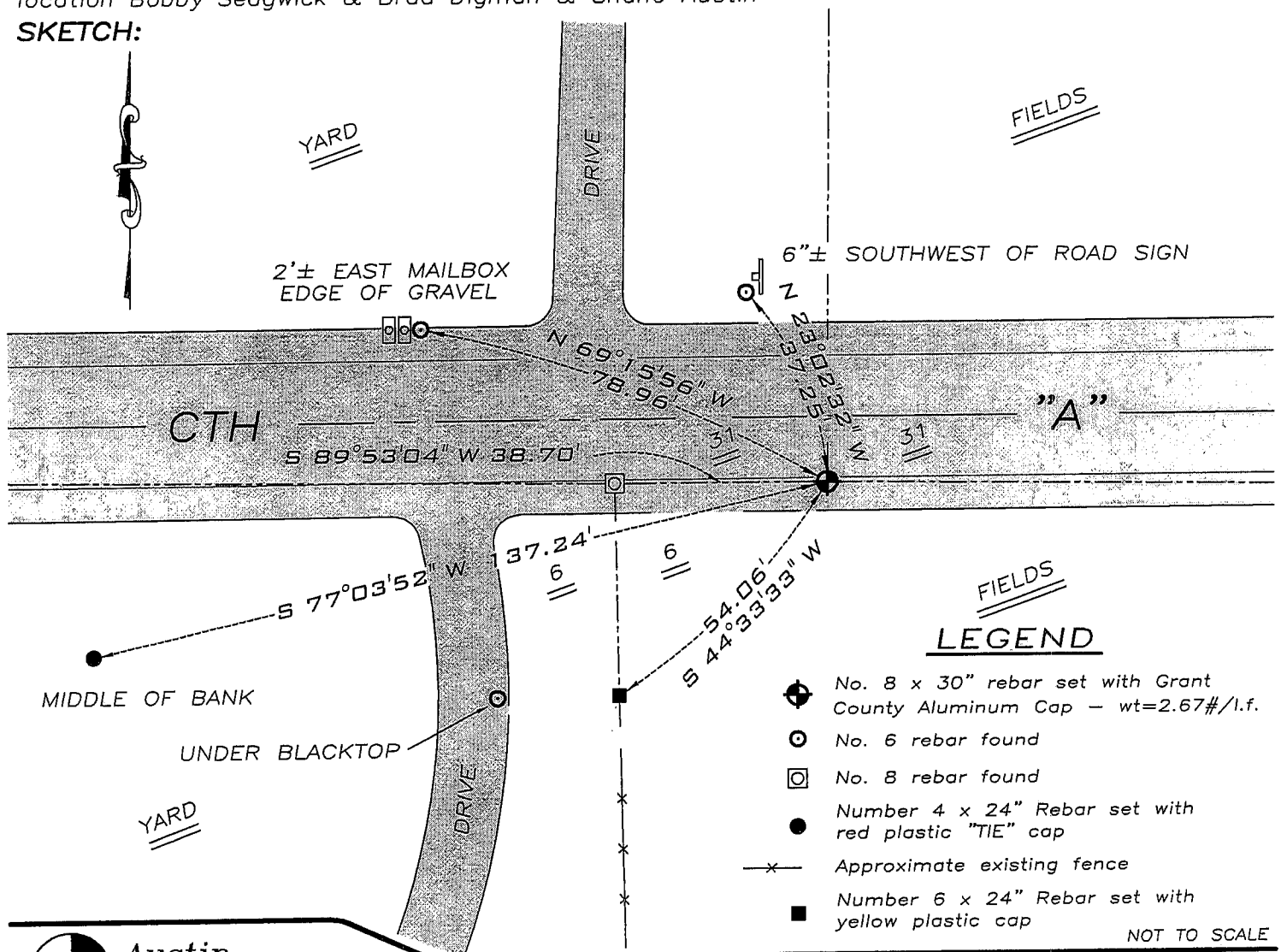
Corner was originally set by Lyon. In 1981 Davis set a No. 10 rebar. No other record of the corner was found.

## CORNER EVIDENCE FOUND

I was unable to locate the No. 10 rebar. I reset a monument at the Davis location. This location does NOT fit the recorded offset. Verified this location using EDM & GPS methods.

**DESCRIPTION OF CORNER AND WITNESS MONUMENTS,** references and accessories used to perpetuate the original or re-established location of this corner. Witnesses to monument location Bobby Sedgwick & Brad Digman & Shane Austin

## SKETCH:



**Austin Engineering LLC**

4211 HWY 81 E, LANCASTER, WI 53813  
PHONE 608-723-6363 FAX 608-723-6702

JOB NUMBER 08S029-LENZ  
FIELDBOOK: TDSR, 2802  
G:\T5NR2W\32  
H:\TIE\T5N2W\132

DRAWN BY: SW AUSTIN  
APPROVED: LL AUSTIN

MAR 26 1991

# GOVERNMENT CORNER RECORD

N 1/4 CORNER, SECTION 6, TOWNSHIP 4 NORTH, RANGE 2 WEST,

TOWN, ~~CITY OF WISCONSIN~~ OF ELLENBORO

TYPE OF MONUMENT: 1" DIA. IRON ROD FOUND ELEVATION - M.S.L. DATUM

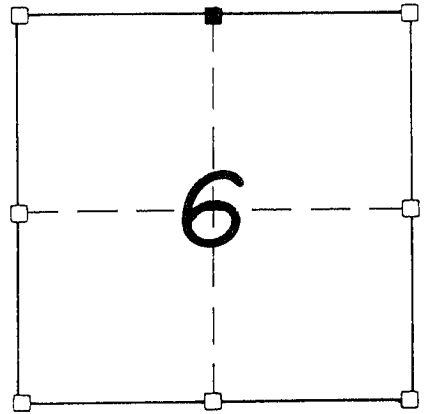
WITNESSES TO CORNER LOCATION

SEAN M. WALSH

PATRICK J. DEDERICH

SECTION 6, T. 4 N, R. 2 W

TOWN OF ELLENBORO



■ - CORNER LOCATION

● - 3/4" X 24" IRON ROD SET

NORTH

TIE SKETCH (SHOW ALL HELPFUL FEATURES)

YARD TOWN OF E/S FIRE NO. SIGN

FIELD LIBERTY

C.T.H. "A"

W/S ROAD SIGN

42.04'

PAVED

44.85'

SURFACE

TOWN OF

ELLENBORO

49.68'

43.82'

SOUTHERLY R.O.W. LINE

C.T.H. "A"

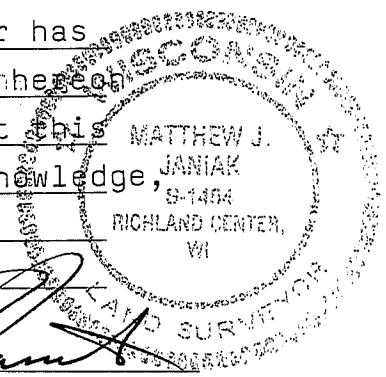
YARD

FIELD

SURVEYOR'S CERTIFICATE

SEAL S- 1454

I, Matthew J. Janiak, DO HEREBY CERTIFY THAT the above corner has  
been accepted and perpetuated at the location shown hereon  
as was previously marked by Homer D. Ralph, and that this  
information is correct and true to the best of my knowledge,  
information and belief.



DATED THIS 18th DAY OF FEBRUARY, 19 91

REGISTERED LAND SURVEYOR

