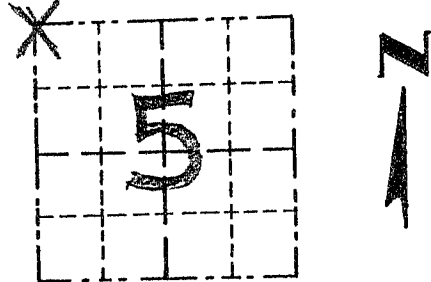


GRANT COUNTY

Survey Monument Record

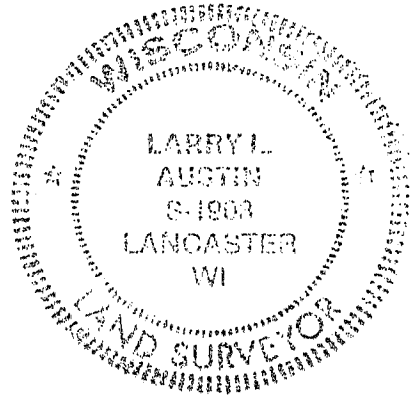
TYPE OF MONUMENT 3/4" x 24" IRON BAR
 STATE PLANE COORDINATES: N _____
 E _____
 ELEVATION — M.S.L. DATUM: _____
 THETA ANGLE: _____
 FIELD BOOK: 95-05
 PAGE 24

CORNER NO. 11
 SECTION 5
 TOWN 4 N
 RANGE 2 W
NW COR



LOCATION
 (Indicated by "X")

SEAL:



BASIS FOR MONUMENT LOCATION

(Use reverse side if necessary)

Show info such as: History of corner, with reference to Vol. and pg., dates, surveyor; exact description of monument replaced; if location computed, by taped or EDM traverse; landowner, remarks, etc.

CORNER WAS SET ON THE SOUTH LINE OF SECTION 31, T5N, R2W AT THE RECORDED CLOSING CORNER DISTANCE FROM THE SE CORNER OF SECTION 31: CSM #166 (1981) SHOWS A DISTANCE TO THE CORNER, BUT DOESN'T INDICATE ANY MONUMENT OR CLOSING CORNER DISTANCE. VERIFIED BY EDM TRAVERSE OF THE AREA.

CERTIFIED CORRECT

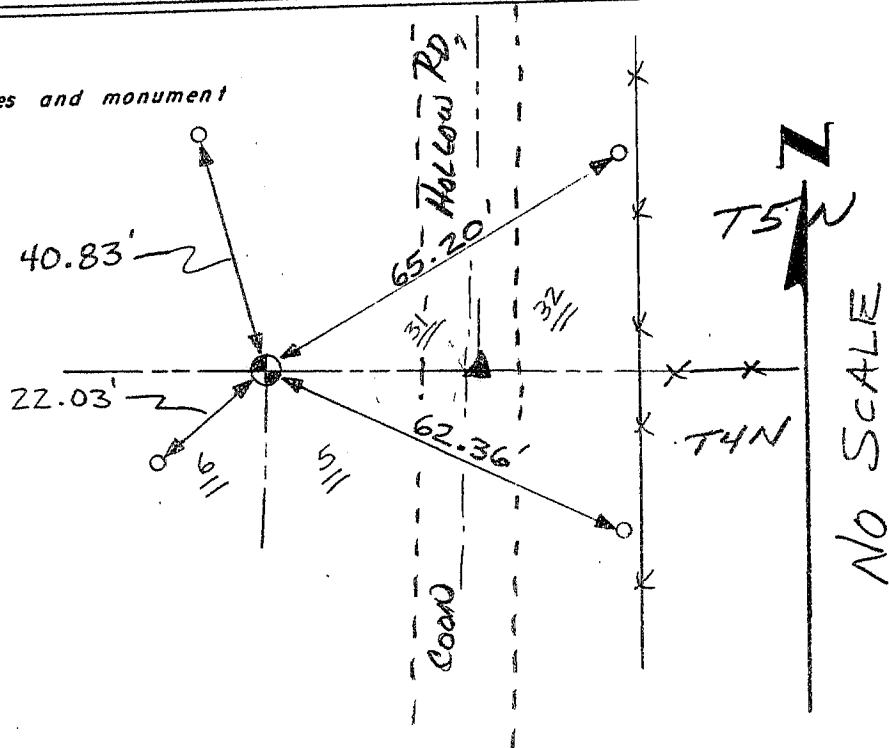
Larry L. Austin
 Registered Land Surveyor
 DATE: 1/6/96

TIE SKETCH

Show at least three (3) ties and monument

LEGEND

- ⊕ 3/4" IRON BAR SET
- 1" x 12" IRON PIPE SET
- X—X— EXISTING FENCE
- ▲ RR. SPIKE



Survey Monument Record

TYPE OF MONUMENT RAILROAD SPIKE
 STATE PLANE COORDINATES: N _____
 E _____

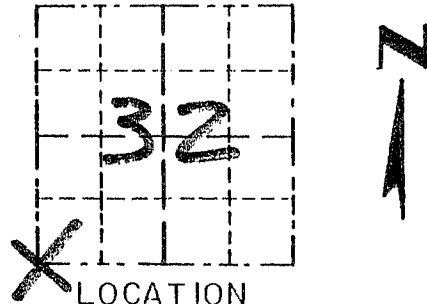
ELEVATION — M.S.L. DATUM: _____

THETA ANGLE: _____

FIELD BOOK: 95-05

PAGE 24

CORNER NO. 131
32
 SECTION
 TOWN 5N
 RANGE 2W



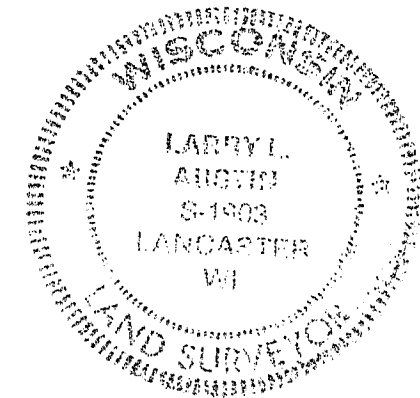
LOCATION
 (Indicated by "X")

BASIS FOR MONUMENT LOCATION

(Use reverse side if necessary)

CORNER SET IN 1832 BY
 SIBLEY. NO RECORD FOUND
 SINCE ORIGINAL SURVEY.
 CORNER WAS SET AT AN
 OCCUPIED LOCATION, VERIFIED
 ITS LOCATION USING EDM
 METHODS.

SEAL:



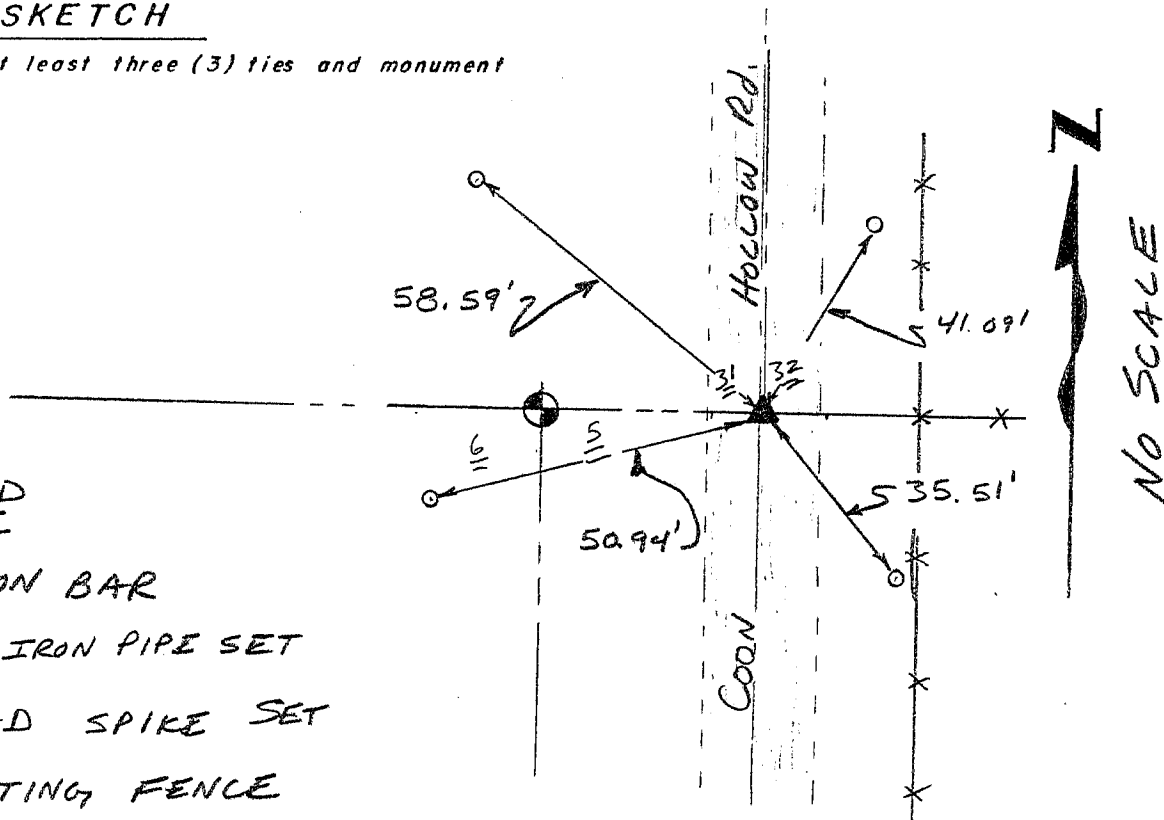
CERTIFIED CORRECT

Larry L. August
 Registered Land Surveyor

DATE: 12/6/95

TIE SKETCH

Show at least three (3) ties and monument



LEGEND

- ⊕ 3/4" IRON BAR
- 1" x 12" IRON PIPE SET
- ▲ RAILROAD SPIKE SET
- x—x— EXISTING FENCE