

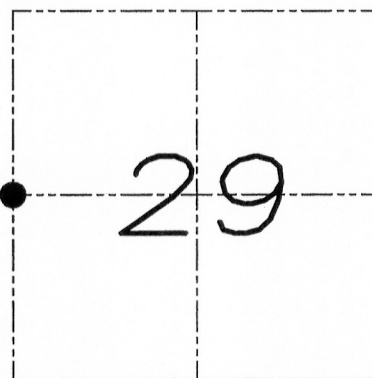
U.S. PUBLIC LAND SURVEY MONUMENT RECORD

Section 29, Town 5 North Range 2 West, Town of Liberty, Grant County, Wisconsin

CERTIFICATE

I, Larry L. Austin, do hereby certify that the corner location on this record was determined by me and/or under my direct supervision and that this U.S. public land survey monument record is correct and complete to the best of my knowledge and belief.

Larry L. Austin
 Larry L. Austin, S-1903



● = CORNER LOCATION

HISTORY OF CORNER

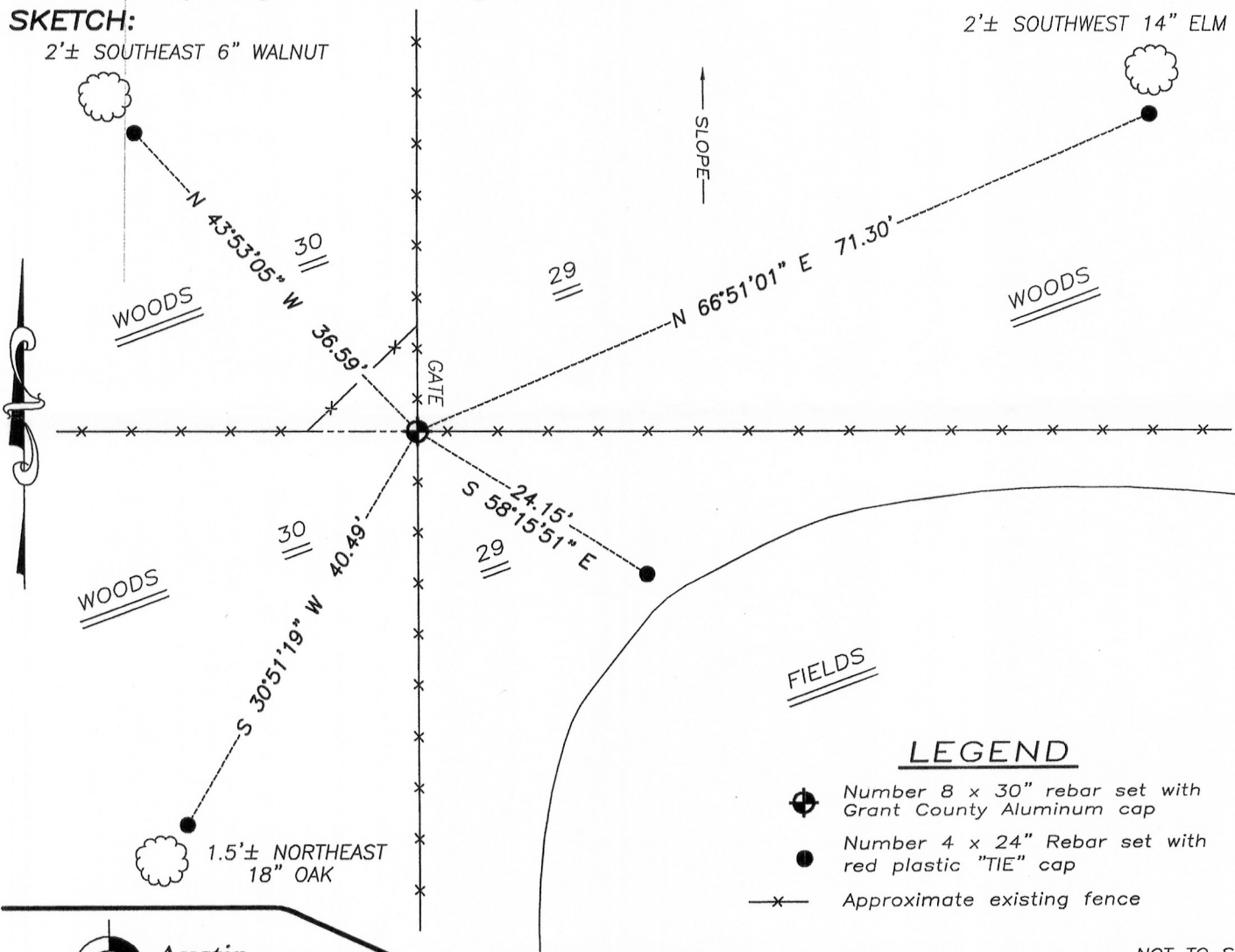
Corner was originally set in 1832 by Hervey Parke. In 1850 Stuntz tied to the corner and made no mention of the monument. In 1880 Barber set a cast iron Sleigh shoe at the corner. No other record of the corner was found.

CORNER EVIDENCE FOUND

I was unable to locate the sleigh shoe. at this location. I reset the corner at the occupied location. I verified this location with E.D.M. and G.P.S. methods.

DESCRIPTION OF CORNER AND WITNESS MONUMENTS, references and accessories used to perpetuate the original or re-established location of this corner. Witnesses to monument location Bobby Sedgwick & Brad Digman & Shane Austin

SKETCH:



LEGEND

- Number 8 x 30" rebar set with Grant County Aluminum cap
- Number 4 x 24" Rebar set with red plastic "TIE" cap
- Approximate existing fence

NOT TO SCALE

Austin Engineering LLC
 austinengineeringllc.com
 4211 HWY 81 E, LANCASTER, WI 53813
 PHONE: 608-723-6363 FAX: 608-723-6702

JOB NUMBER 10S136 Century 21
 FIELDBOOK TDSR, 2011
 G:\T5NR2W\32
 H:\TIE\T5NR2W\95

DRAWN BY: SW AUSTIN
 APPROVED: LL AUSTIN

95

NOV 04 2011