

# GRANT COUNTY CERTIFIED LAND CORNER

CORNER NUMBER 111

**CERTIFICATE:**

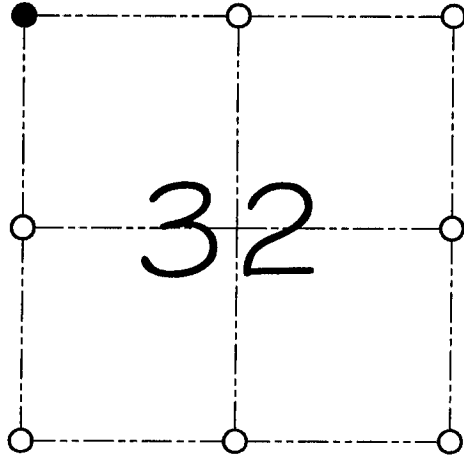
I, Larry L. Austin, do hereby certify that on the 3rd day of March, 2000, I found evidence of the Northwest corner of Section 32, Town 5 North, Range 2 West, of the 4th Principal Meridian, and I re-established said corner according to the Wisconsin statutes as shown and described hereon.

Dated this 10th day of March, 2000

*Larry L. Austin*  
Larry L. Austin S-1903



SEAL



● = CORNER LOCATION

**NORTHWEST CORNER OF  
SECTION 32, T 5 N R 2 W  
TOWN OF LIBERTY**

**HISTORY OF ORIGINAL CORNER ESTABLISHMENT:**

Corner was originally set in 1832 by Harvey Parke.

In 1875 Joel Barber measured to the corner.

No other record of the corner was found.

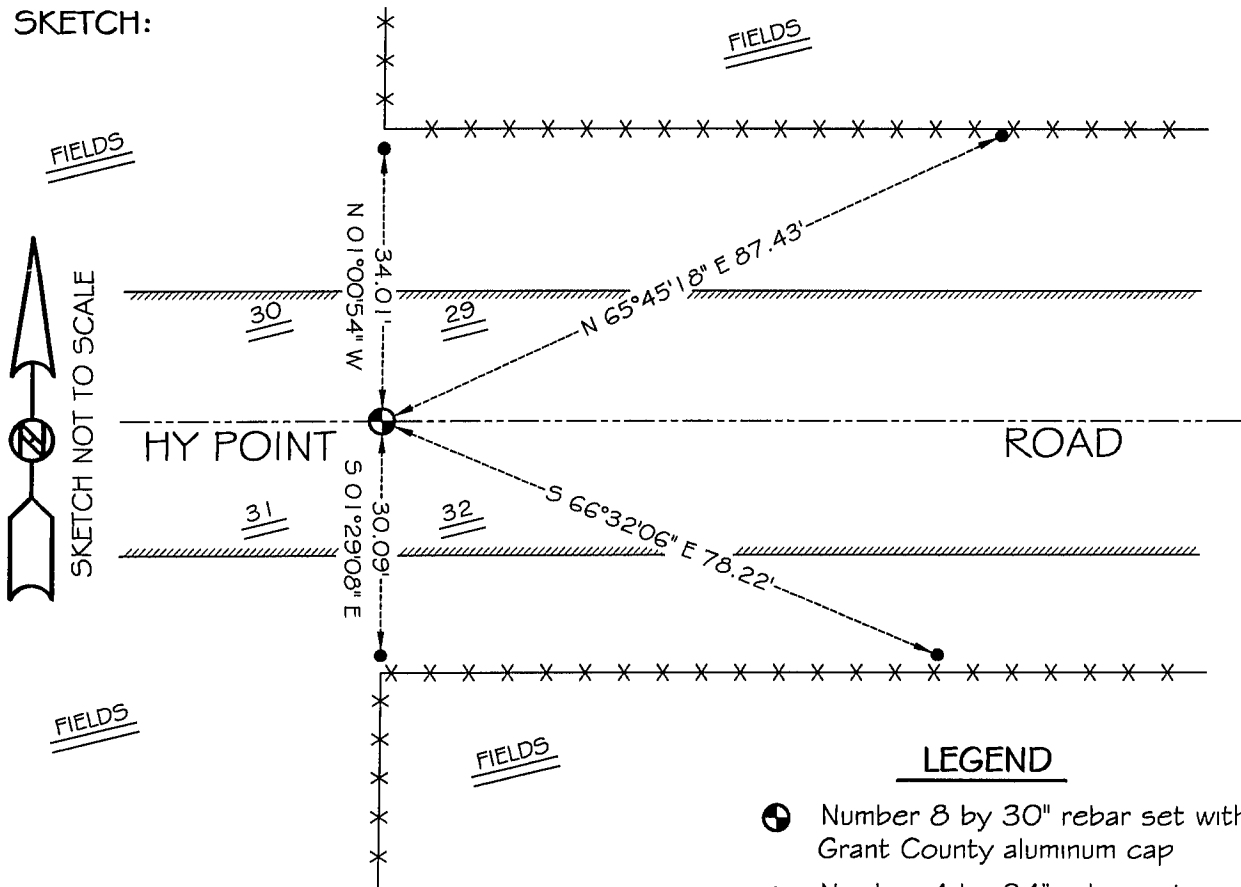
**DESCRIPTION OF CORNER EVIDENCE FOUND:**

I found an occupied location of the centerline road East-West and fence North-South. This location fit well with the rest of Section 32. Verified this location using E.D.M. & G.P.S. methods.

**DESCRIPTION OF CORNER AND WITNESS MONUMENTS, references and accessories used to perpetuate the original or re-established location of this corner**

WITNESS TO THE CORNER LOCATION: SHANE AUSTIN ; SHAWN BEHREND

**SKETCH:**



**LEGEND**

- Number 8 by 30" rebar set with Grant County aluminum cap
- Number 4 by 24" rebar set with red plastic cap
- ×× Existing fence location

\* SEE SECTION SUMMARY FOR \*  
RELATIONSHIP TO AREA CORNERS