

GRANT COUNTY CERTIFIED LAND CORNER

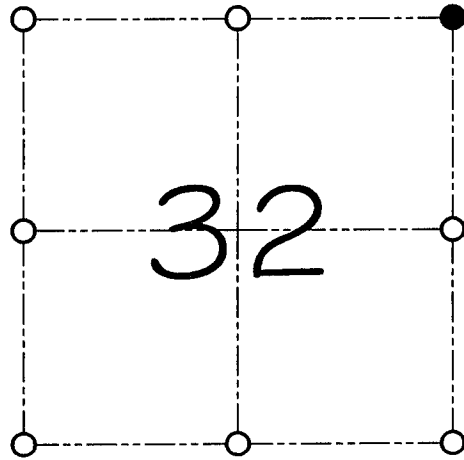
CORNER NUMBER 109

CERTIFICATE:

I, Larry L. Austin, do hereby certify that on the 3rd day of March, 2000, I found evidence of the Northeast corner of Section 32, Town 5 North, Range 2 West, of the 4th Principal Meridian, and I re-established said corner according to the Wisconsin statutes as shown and described hereon.

Dated this 10th day of March, 2000

Larry L. Austin
Larry L. Austin S-1903



● = CORNER LOCATION

**NORTHEAST CORNER OF
SECTION 32, T 5 N R 2 W
TOWN OF LIBERTY**

HISTORY OF ORIGINAL CORNER ESTABLISHMENT:

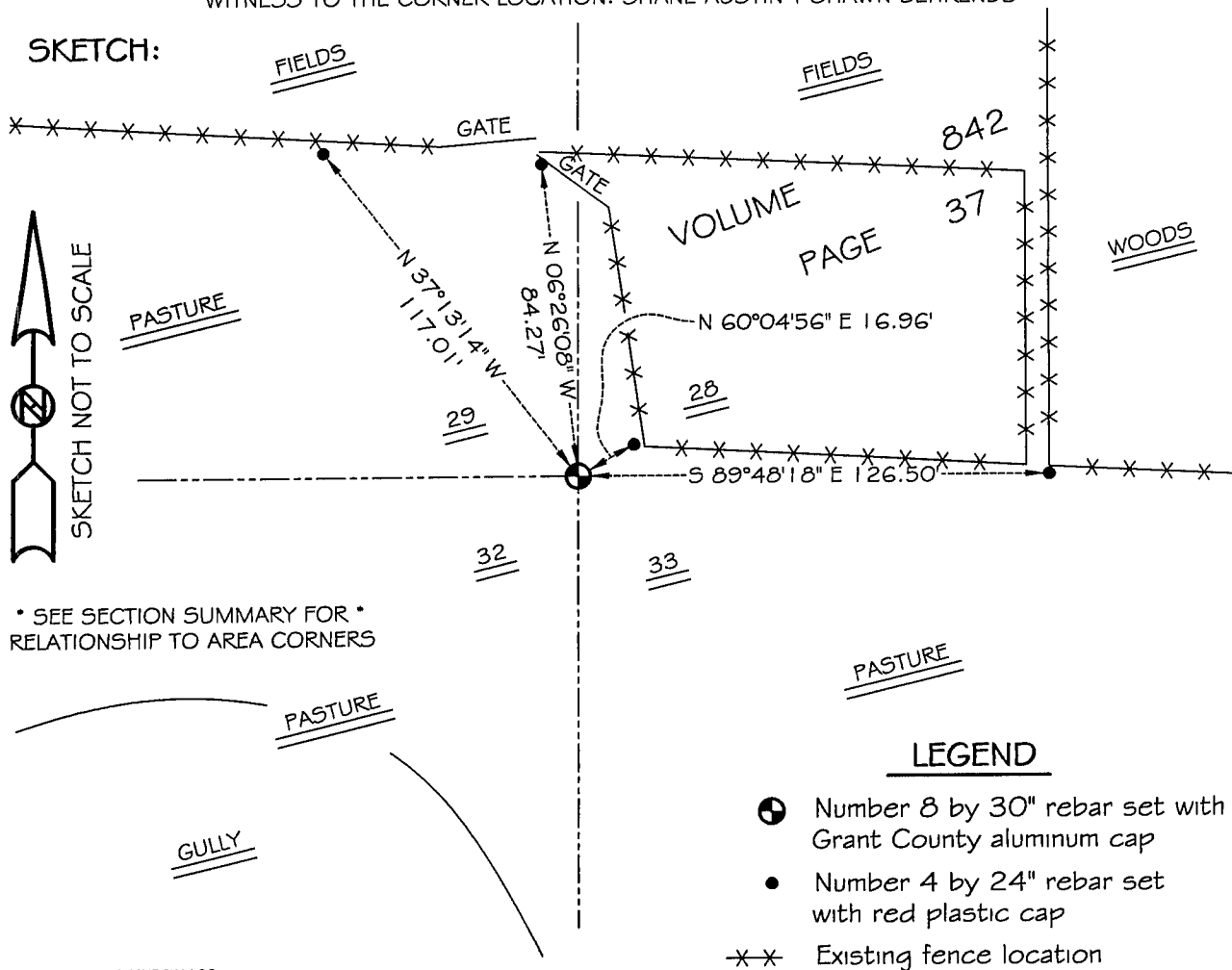
Corner was originally set in 1832 by Harvey Parke.
In 1880 Joel Barber found the corner and bearing trees.

DESCRIPTION OF CORNER EVIDENCE FOUND:

I found an existing fence corner East of the section corner.
Said corner was described in Volume 842 Page 37. I reset the corner based on said Volume and Page. This location fit very well with other adjoining corners.

DESCRIPTION OF CORNER AND WITNESS MONUMENTS, references and accessories used to perpetuate the original or re-established location of this corner
WITNESS TO THE CORNER LOCATION: SHANE AUSTIN & SHAWN BEHREDS

SKETCH:



* SEE SECTION SUMMARY FOR *
RELATIONSHIP TO AREA CORNERS

LEGEND

- Number 8 by 30" rebar set with Grant County aluminum cap
- Number 4 by 24" rebar set with red plastic cap
- ×× Existing fence location