

U.S. PUBLIC LAND SURVEY MONUMENT RECORD - GRANT COUNTY, WI

Section 26, Town 5 North Range 2 West, Town of Liberty

CERTIFICATE:

I, Aaron J. Austin, do hereby certify that the corner location on this record was determined by me and/or under my direct supervision and that this U.S. Public Land Survey Monument Record is correct and complete to the best of my knowledge and belief.

Dated this 16th day of June, 2011,

Aaron J. Austin
 Aaron J. Austin, S-2922



● = CORNER LOCATION

HISTORY OF CORNER ESTABLISHMENT:

Corner was originally set by Hervey Parke in 1832. Joseph Allen tied to the original corner in 1870. No other record of the corner found.

DESCRIPTION OF CORNER EVIDENCE FOUND:

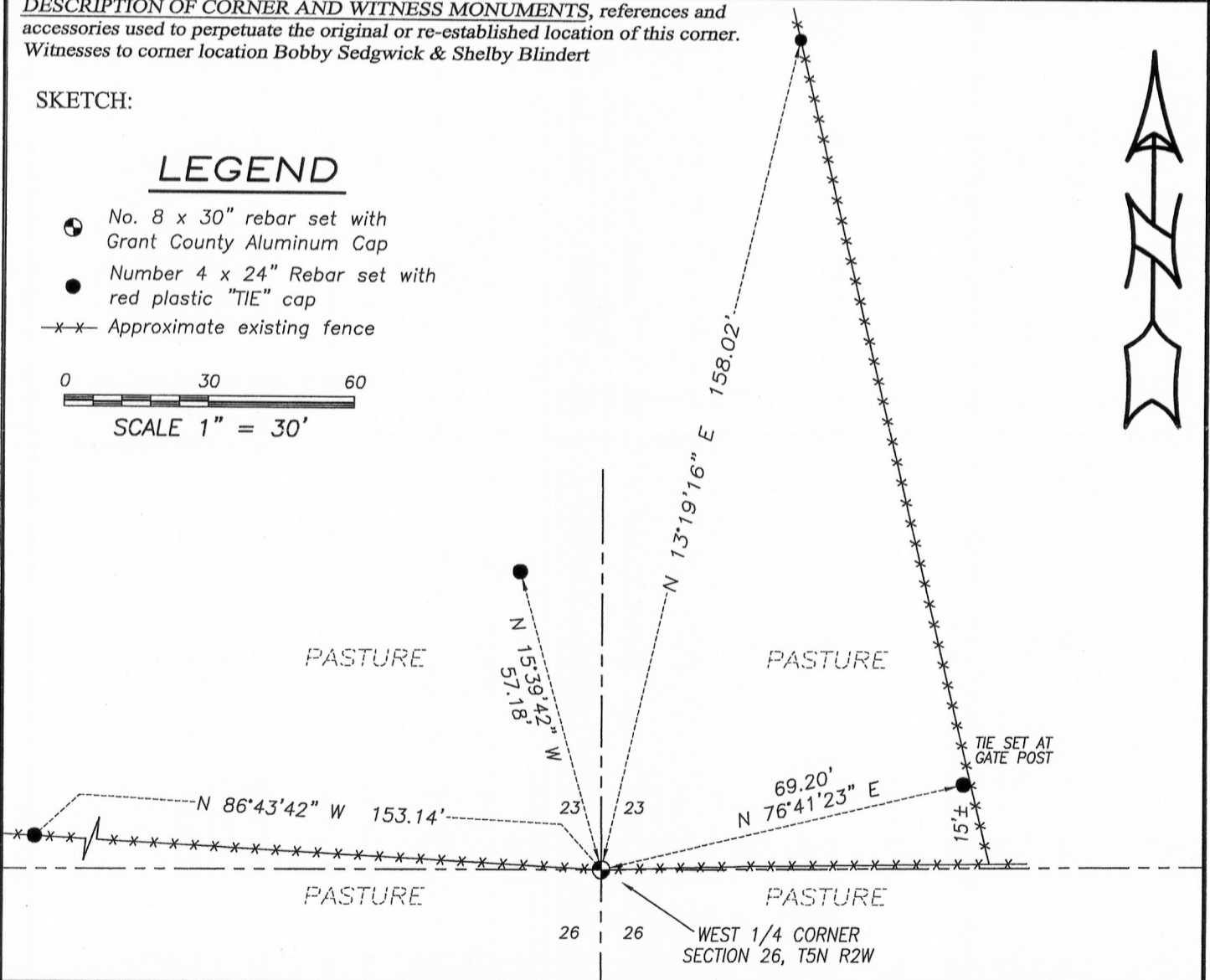
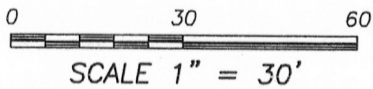
I found an occupied location of a split fence East-West. This location fit many occupied and monumented corners in Section 26. I verified its location using E.D.M. and G.P.S. methods.

DESCRIPTION OF CORNER AND WITNESS MONUMENTS, references and accessories used to perpetuate the original or re-established location of this corner. Witnesses to corner location Bobby Sedgwick & Shelby Blindert

SKETCH:

LEGEND

- No. 8 x 30" rebar set with Grant County Aluminum Cap
- Number 4 x 24" Rebar set with red plastic "TIE" cap
- x-x- Approximate existing fence



Austin Engineering LLC
 austinengineeringllc.com

4211 HWY 81 E, LANCASTER, WI 53813
 PHONE: 608-723-6363 FAX: 608-723-6702

JOB NO: 11s102
 G:\T5NR2W\26GCC
 H:\TIE\T5NR2W\98

FIELDBOOK: TDSR
 DRAWN BY: AJ AUSTIN
 CREW: BS-SB