

U.S. PUBLIC LAND SURVEY MONUMENT RECORD - GRANT COUNTY, W

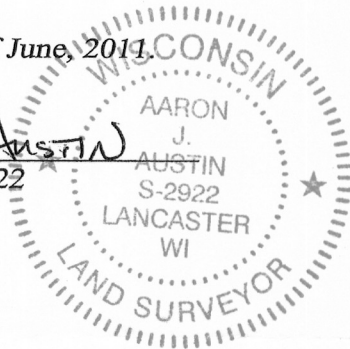
Section 26, Town 5 North Range 2 West, Town of Liberty

CERTIFICATE:

I, Aaron J. Austin, do hereby certify that the corner location on this record was determined by me and/or under my direct supervision and that this U.S. Public Land Survey Monument Record is correct and complete to the best of my knowledge and belief.

Dated this 16th day of June, 2011.

Aaron J. Austin
 Aaron J. Austin, S-2922



● = CORNER LOCATION

HISTORY OF CORNER ESTABLISHMENT:

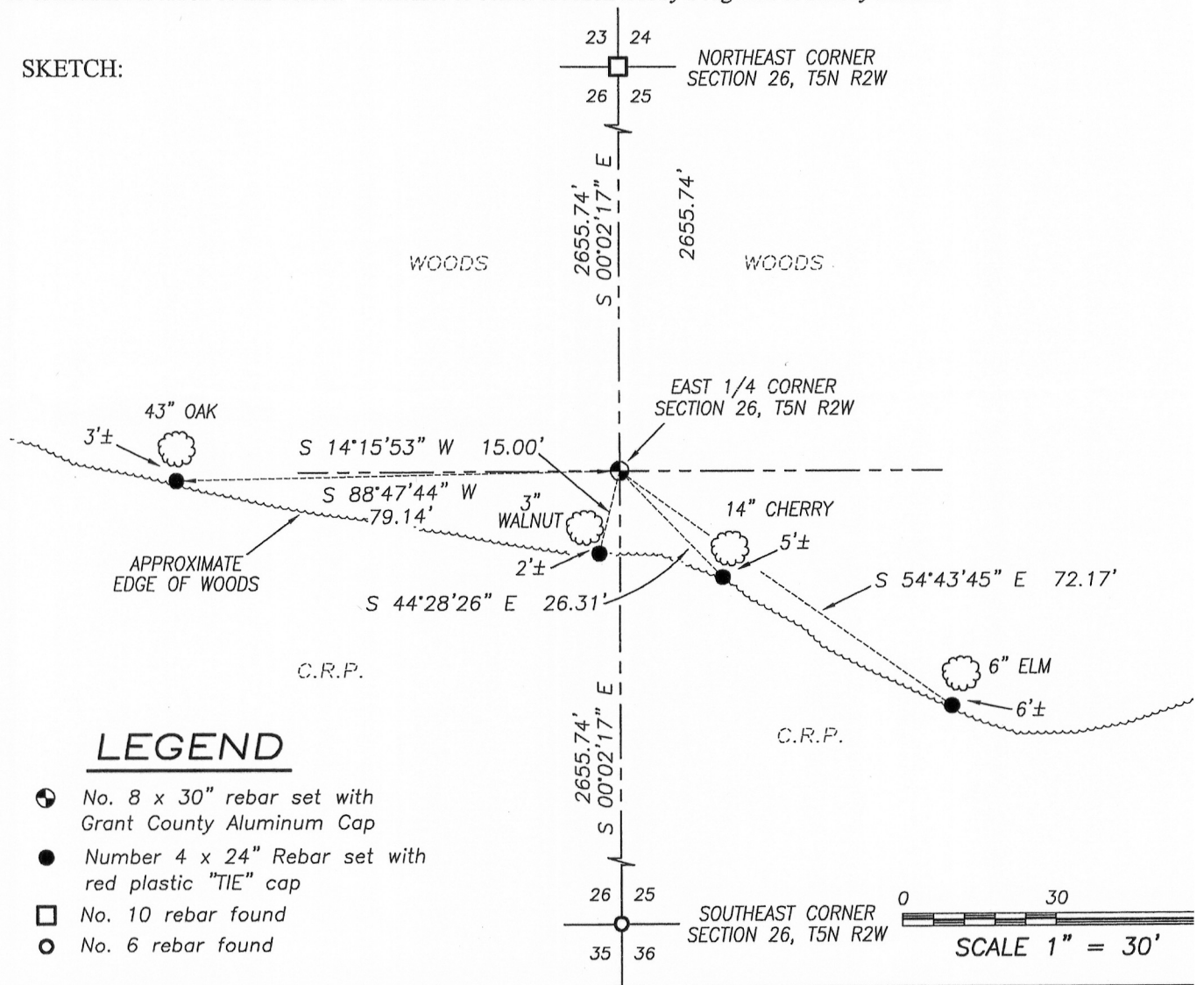
Corner was originally set by Hervey Parke in 1832. Joel Barber found the original corner and set a stake in 1875. No other record was found of this corner.

DESCRIPTION OF CORNER EVIDENCE FOUND:

I was unable to locate any evidence of the original corner or the stake set by Barber. I reset the corner proportionally between the Northeast and Southeast corner of Section 26 and verified this location by E.D.M. and G.P.S. methods.

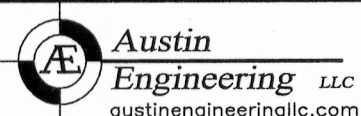
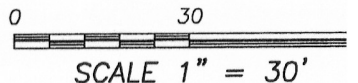
DESCRIPTION OF CORNER AND WITNESS MONUMENTS, references and accessories used to perpetuate the original or re-established location of this corner. Witnesses to corner location Bobby Sedgwick & Shelby Blindert

SKETCH:



LEGEND

- ⊕ No. 8 x 30" rebar set with Grant County Aluminum Cap
- Number 4 x 24" Rebar set with red plastic "TIE" cap
- No. 10 rebar found
- No. 6 rebar found



4211 HWY 81 E, LANCASTER, WI 53813
 PHONE: 608-723-6363 FAX: 608-723-6702

JOB NO: 11s102
 G:\T5NR2W\26GCC
 H:\TIE\T5NR2W\99

FIELDBOOK: TDSR
 DRAWN BY: AJ AUSTIN
 CREW: BS-SB

JUL 07 2011