

# GRANT COUNTY

## Survey Monument Record

TYPE OF MONUMENT 3/4" X 24" IRON BAR SET

STATE PLANE COORDINATES: N \_\_\_\_\_  
E \_\_\_\_\_

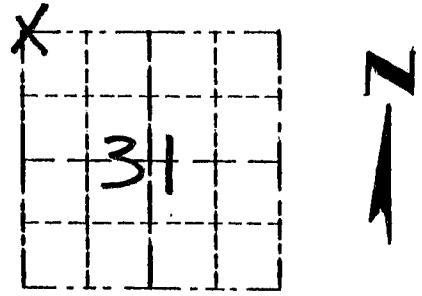
ELEVATION — M.S.L. DATUM: \_\_\_\_\_

THETA ANGLE: \_\_\_\_\_

FIELD BOOK: 96-08

PAGE \_\_\_\_\_

CORNER NO. 113  
SECTION 31  
TOWN 5N  
RANGE 1W

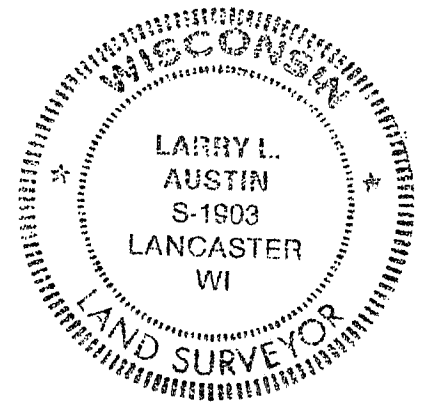


LOCATION  
(Indicated by "X")

### BASIS FOR MONUMENT LOCATION

(Use reverse side if necessary)

CORNER SET IN 1832 BY  
SIBLEY. ORIGINAL BEARING  
TREES WERE UNRECOVERABLE. SEAL:  
DOUGLAS MALLIET SET THE  
CORNER IN 1989. HE SET THE  
CORNER AT 14.28' INSTEAD OF  
14 LINKS. I SET THE CORNER  
AT RECORDED OFFSET ONLINE  
WITH THE NORTHEAST AND THE  
EAST 1/4 OF SECTION 36 T5N R2W,  
VERIFIED ITS LOCATION USING  
EDM METHODS.



CERTIFIED CORRECT

*Larry L. Austin*  
Registered Land Surveyor

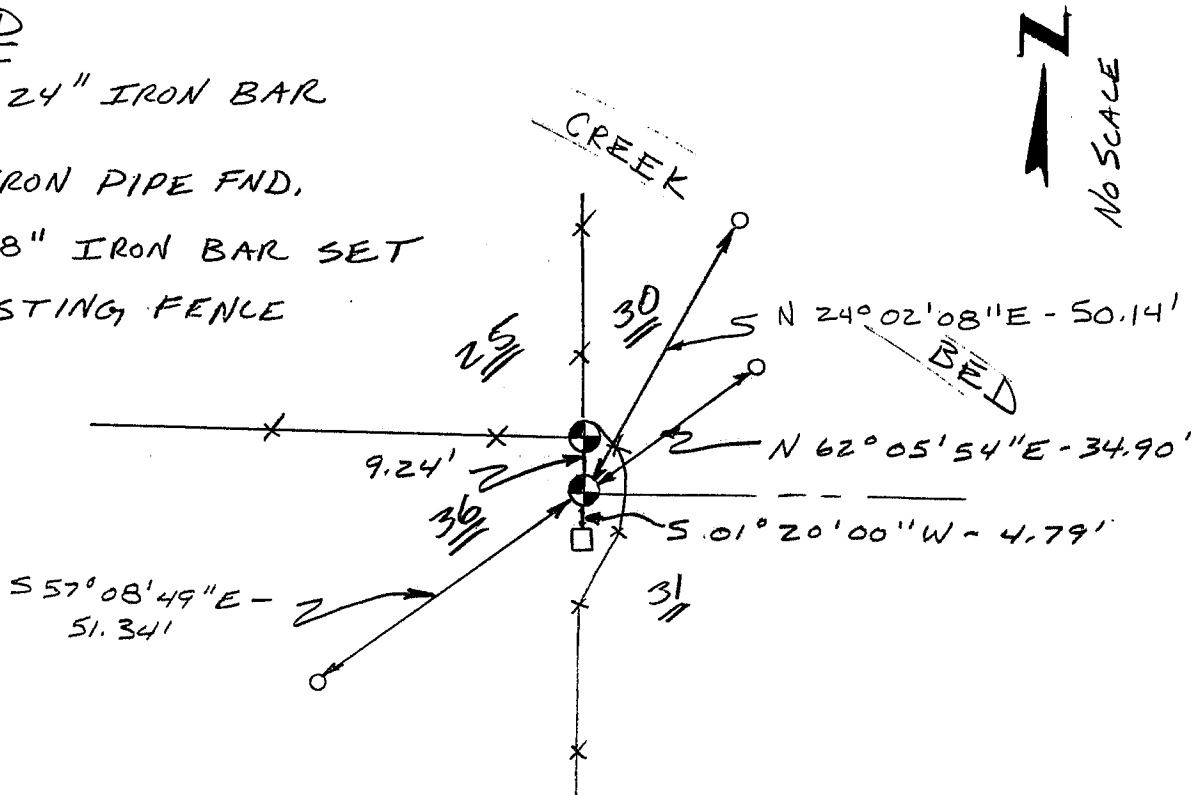
DATE: 10-1-96

### TIE SKETCH

Show at least three (3) ties and monument.

#### LEGEND

- ⊕ 3/4" X 24" IRON BAR SET
- 2" IRON PIPE FND.
- 1/2" X 18" IRON BAR SET
- EXISTING FENCE



# GRANT COUNTY

## Survey Monument Record

CORNER NO. 101  
 SECTION 36  
 TOWN 5N  
 RANGE 2W

TYPE OF MONUMENT 3/4" X 24" IRON BAR SET

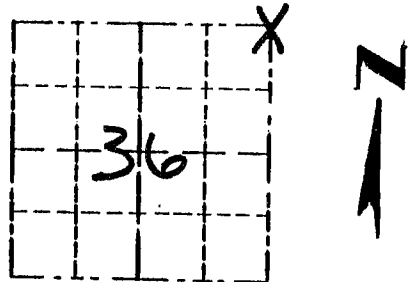
STATE PLANE COORDINATES: N \_\_\_\_\_  
 E \_\_\_\_\_

ELEVATION — M.S.L. DATUM: \_\_\_\_\_

THETA ANGLE: \_\_\_\_\_

FIELD BOOK: 96-08

PAGE \_\_\_\_\_



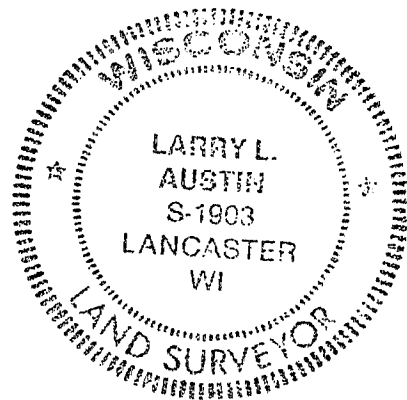
LOCATION  
 (Indicated by "X")

### BASIS FOR MONUMENT LOCATION

(Use reverse side if necessary)

CORNER SET IN 1832 BY  
 SIBLEY, ORIGINAL BEARING  
 TREES WERE UNRECOVERABLE.  
 CORNER WAS SET AT A  
 OCCUPATIONAL FENCE CORNER.  
 VERIFIED ITS LOCATION  
 USING EDM METHODS.

SEAL:



CERTIFIED CORRECT

*Larry L. Austin*  
 Registered Land Surveyor

DATE: 10-1-96

### TIE SKETCH

Show at least three (3) ties and monument

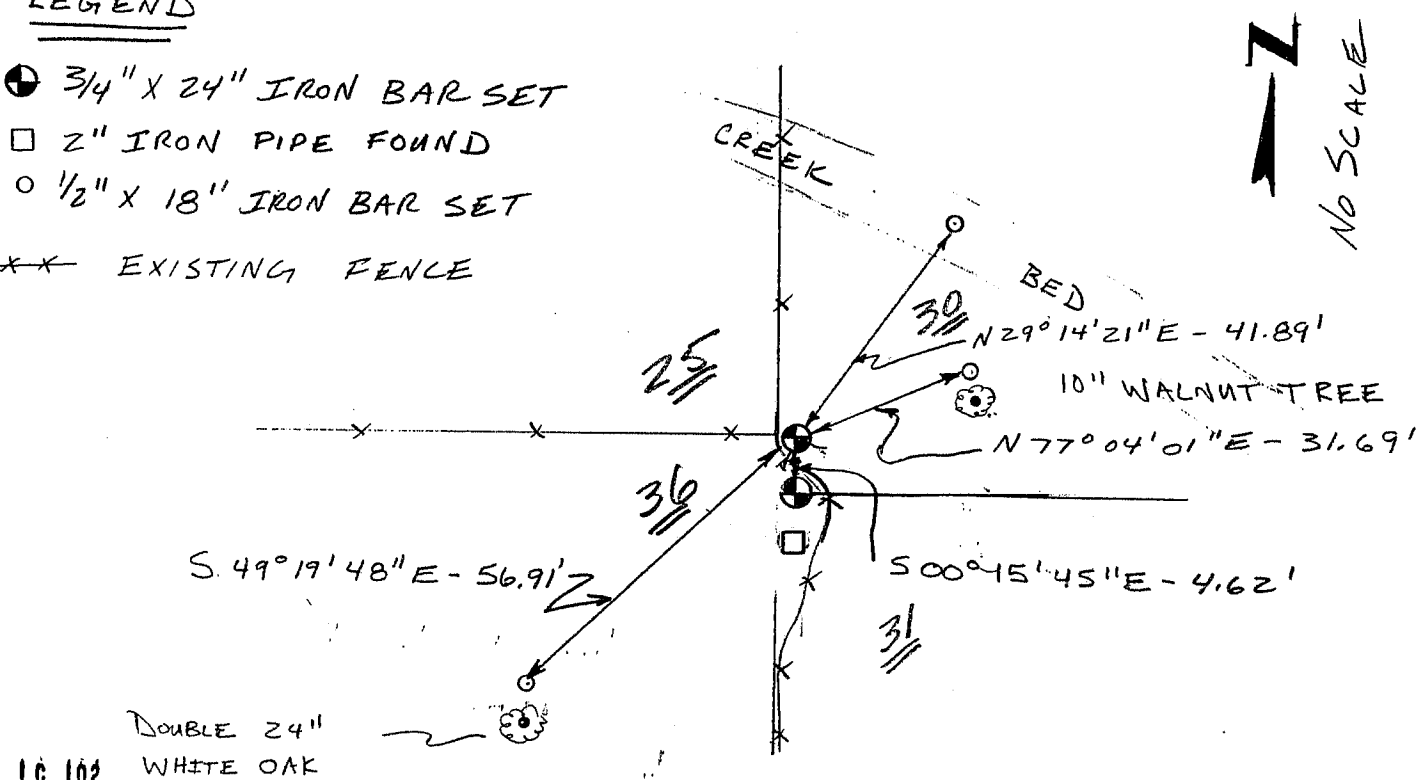
#### LEGEND

⊕ 3/4" X 24" IRON BAR SET

□ 2" IRON PIPE FOUND

○ 1/2" X 18" IRON BAR SET

--- EXISTING FENCE



No SCALE

DOUBLE 24"  
 WHITE OAK

CORNER DESCRIPTION: NW CORNER, SECTION 31, T 5 N, R 1 W

STATE PLANE COORDINATES: N \_\_\_\_\_, E \_\_\_\_\_

THETA ANGLE: \_\_\_\_\_

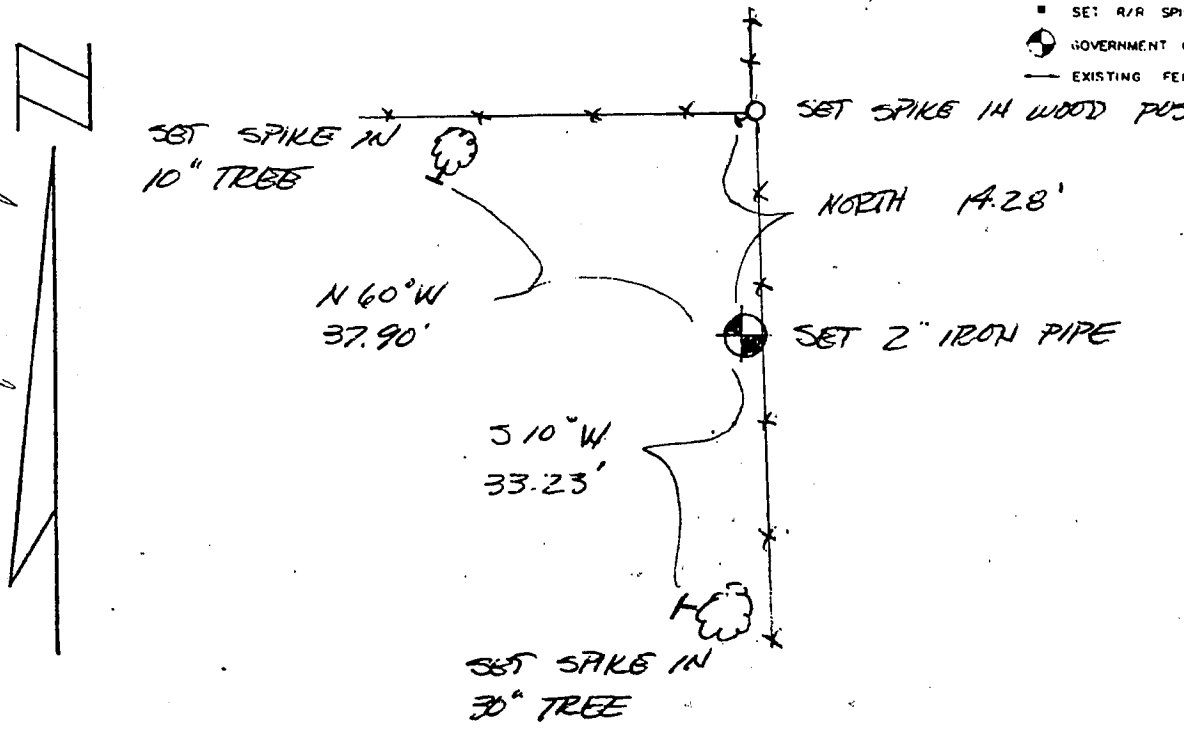
HORIZONTAL DATUM: WISCONSIN STATE PLANE COORDINATE SYSTEM, SOUTH ZONE

EVIDENCE: EXISTING FENCE LINE TO N+S, INTERSECTED N-S LINE WITH E-W SECTION LINE, MEASURED WITH GUN TRAVERSES

MONUMENT: FOUND , PLACED   
METHOD OF RESTORATION (RE-ESTABLISHMENT):  
 ACCEPTED EXISTING MONUMENT  
N , E  ACCEPTED OCCUPATION  
N , E  LOST CORNER PROPORTIONATE METHODS  
DATE CORNER SET: 3-17-89

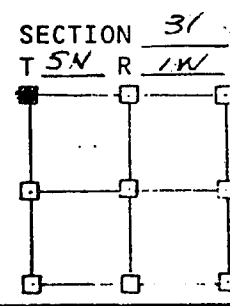
- LEGEND
- ▲ SET #6 REBAR, 113 LBS PER LINEAL FT MIN WT
  - SET "X24" IRON PIPE, 113 LBS PER LINEAL FT MIN WT
  - SET 2" X30" IRON PIPE, 3.65 LBS PER LINEAL FT MIN WT
  - FOUND 1" IRON PIPE
  - FOUND 2" IRON PIPE
  - FOUND R/R SPIKE
  - SET R/R SPIKE
  - ⊙ GOVERNMENT CORNER
  - EXISTING FENCE

Cleyton Street



GRANT COUNTY  
CLERK  
**RECEIVED**

JUL 26 1989



NOT TO SCALE THIS CONFORMS TO WISCONSIN ADMINISTRATIVE CODE A-F 5.02

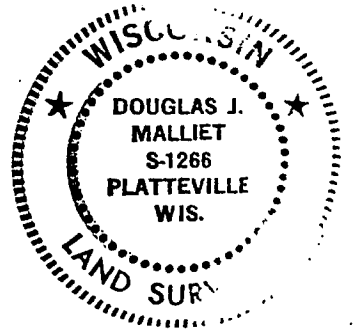
**SURVEYOR'S AFFIDAVIT:**

STATE OF WISCONSIN)  
GRANT COUNTY) SS

I hereby certify that I, DOUGLAS J. MALLIET, have complied with the Wisconsin State Statutes, Statutes of the United States, and the rules and regulations made by the Secretary of the Interior in the location of the corner shown above.

DATE OF SURVEY: 3-17-89

Douglas J. Malliet  
REGISTERED LAND SURVEYOR  
# 1266



**D. F. BURBACH MUNICIPAL & CIVIL ENGINEERS**

410 NORTH SECOND STREET • PLATTEVILLE, WISCONSIN 53818 • (608) 348-3262

