

# U.S. PUBLIC LAND SURVEY MONUMENT RECORD - GRANT COUNTY, WI

Section 26, Town 5 North Range 2 West, Town of Liberty

**CERTIFICATE:**

I, Aaron J. Austin, do hereby certify that the corner location on this record was determined by me and/or under my direct supervision and that this U.S. Public Land Survey Monument Record is correct and complete to the best of my knowledge and belief.

Dated this 16th day of June, 2011.

*Aaron J. Austin*  
 Aaron J. Austin, S-2922



● = CORNER LOCATION

HISTORY OF CORNER ESTABLISHMENT:

Corner was set in 1832 by Hervey Parke. In 1980 Bruce Bowden set a 1 1/4" iron bar. In 1997 Larry Austin found and accepted the corner location and tied out the corner.

DESCRIPTION OF CORNER EVIDENCE FOUND:

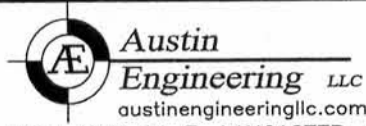
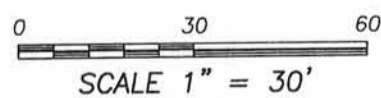
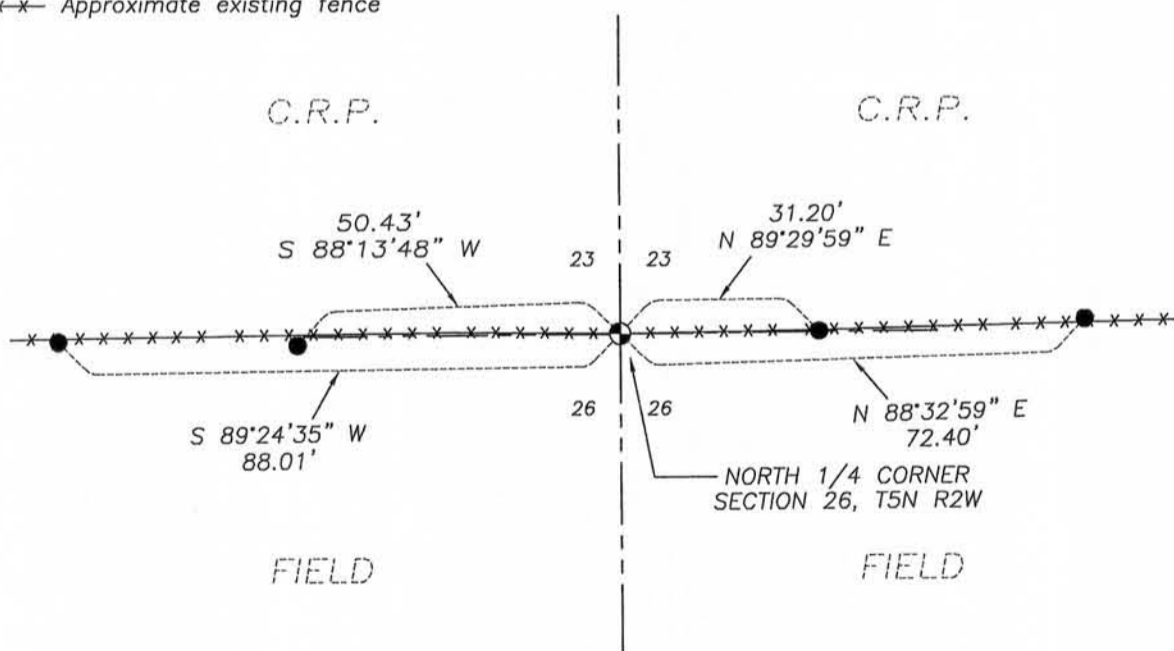
The 1 1/4" rebar was found and disturbed. The ties set by Larry Austin were found to be disturbed. I set a No. 8 rebar with Grant County Aluminum Cap and new ties based upon ties to adjoining corners and the Larry Austin Survey. EDM Traverse and GPS Observation were used.

DESCRIPTION OF CORNER AND WITNESS MONUMENTS, references and accessories used to perpetuate the original or re-established location of this corner. Witnesses to corner location Bobby Sedgwick & Shelby Blindert

SKETCH:

LEGEND

- No. 8 x 30" rebar set with Grant County Aluminum Cap
- Number 4 x 24" Rebar set with red plastic "TIE" cap
- x-x- Approximate existing fence



4211 HWY 81 E, LANCASTER, WI 53813  
 PHONE: 608-723-6363 FAX: 608-723-6702

JOB NO: 11s102  
 G:\T5NR2W\26GCC  
 H:\TIE\T5NR2W\84

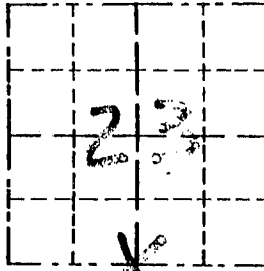
FIELDBOOK: TDSR  
 DRAWN BY: AJ AUSTIN  
 CREW: BS-SB

Survey Monument Record

CORNER NO. 84  
 SECTION 23  
 TOWN 5N  
 RANGE 2W

TYPE OF MONUMENT 1 1/4" IRON BAR FND.

FIELD BOOK: 96-21  
 PAGE (9)



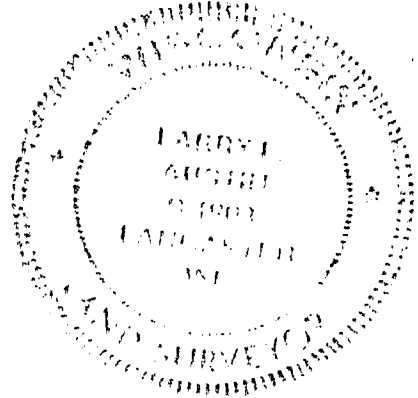
LOCATION  
 (Indicated by "X")

BASIS FOR MONUMENT LOCATION

(Use reverse side if necessary)

Show info such as: History of corner, with reference to Vol. and pg., dates, surveyor; exact description of monument replaced; if location computed, by taped or EDM traverse; landowner, remarks, etc.

SEAL:



CORNER SET IN 1832 BY HARVEY CLARKE. IN 1980 B. BOWDEN SET A 1 1/4" IRON BAR. IT ACCEPTED ITS LOCATION AFTER EDM TRAVERSE OF AREA.

CERTIFIED CORRECT

Larry R. Aust  
 Registered Land Surveyor

DATE: 2/16/97

TIE SKETCH

Show at least three (3) ties and monument

LEGEND

- ⊙ 1 1/4" IRON BAR FOUND
- 1/2" x 15" IRON BAR SET
- EXISTING FENCE

