

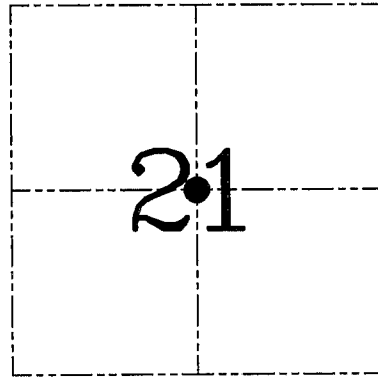
U.S. PUBLIC LAND SURVEY MONUMENT RECORD – GRANT COUNTY, WI

Section 21, Town 5 North Range 2 West, Town of Liberty

CERTIFICATE

I, Larry L. Austin, do hereby certify that the corner location on this record was determined by me and/or under my direct supervision and that this U.S. public land survey monument record is correct and complete to the best of my knowledge and belief.

Larry L. Austin
 Larry L. Austin, S-1903



● = CORNER LOCATION

HISTORY OF CORNER ESTABLISHMENT

In 1992 Janiak found and tied a stone.
 No other recent record of the corner was found.

DESCRIPTION OF CORNER EVIDENCE FOUND

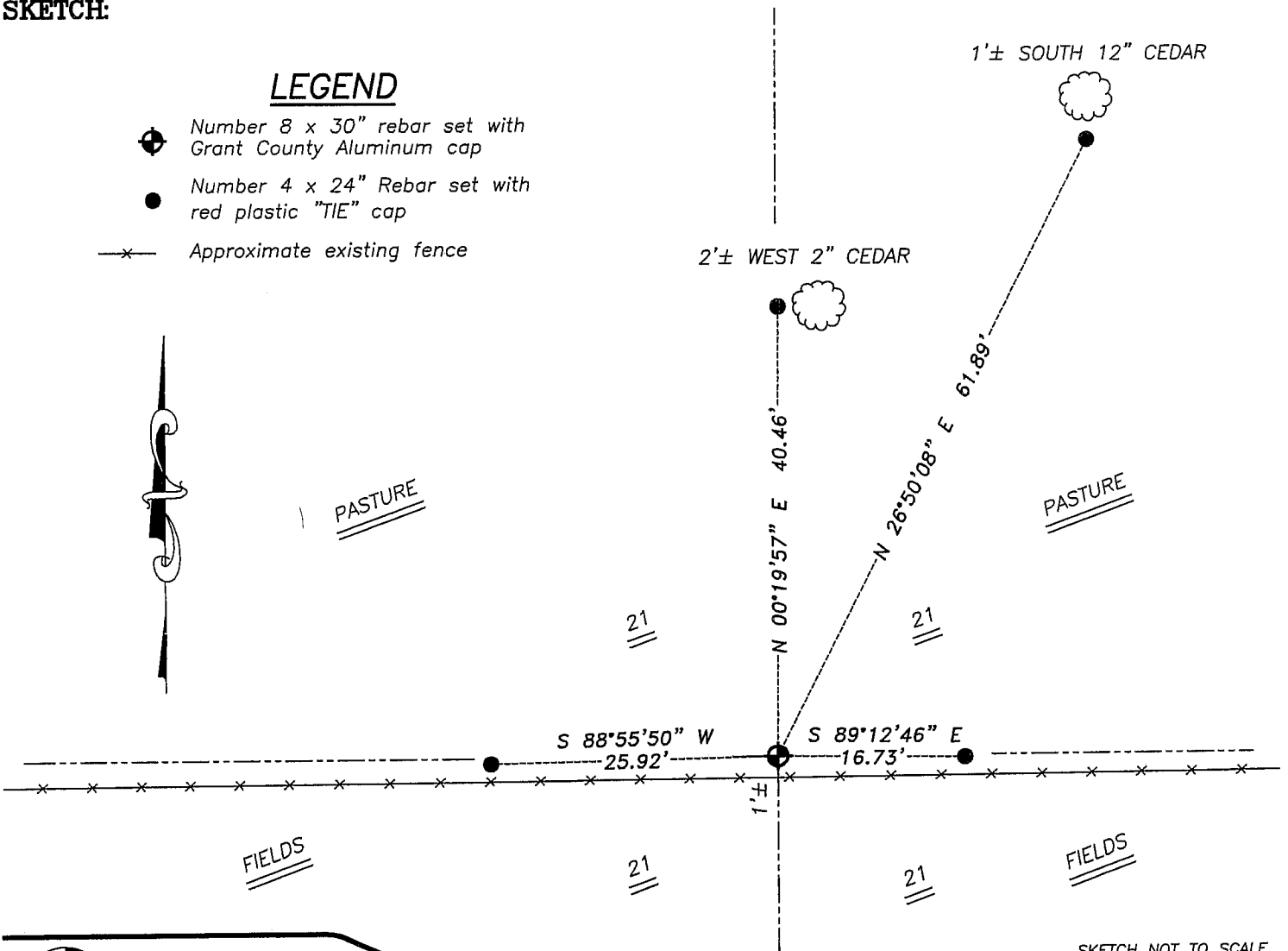
The stone and ties were lost due to bulldozing and fence clearing. I reset the corner and ties as shown hereon. Verified this location using EDM & GPS methods.

DESCRIPTION OF CORNER AND WITNESS MONUMENTS, references and accessories used to perpetuate the original or re-established location of this corner. Witnesses to corner location Bobby Sedgwick & Brad Digman & Shane Austin

SKETCH:

LEGEND

- Number 8 x 30" rebar set with Grant County Aluminum cap
- Number 4 x 24" Rebar set with red plastic "TIE" cap
- *— Approximate existing fence



SKETCH NOT TO SCALE



Austin Engineering LLC

4211 HWY 81 E, LANCASTER, WI 53813
 PHONE 608-723-6363 FAX 608-723-6702

JOB NUMBER 06S188
 FIELDBOOK: TDSR, 2605
 G:\T5NR2W\09
 H:\TIE\T5NR2W\76A

DRAWN BY: SW AUSTIN
 APPROVED: LL AUSTIN

76A

SEP 30 1992

GOVERNMENT CORNER RECORD

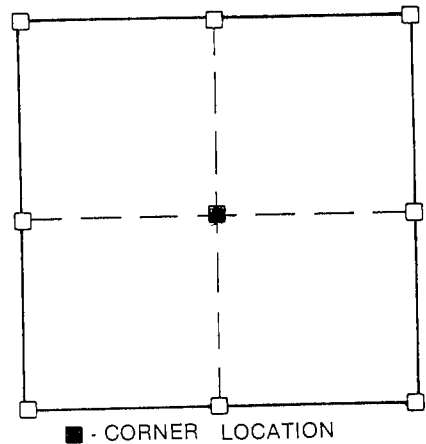
Center CORNER, SECTION 21 , TOWNSHIP 5 NORTH, RANGE 2 ~~XXX~~ - WEST,
TOWN, ~~XXXXXXXXXX~~ OF Liberty
TYPE OF MONUMENT: Stone ELEVATION - M.S.L. DATUM

SECTION 21 , T 5 N, R 2 ~~XXX~~
TOWN OF Liberty

WITNESSES TO CORNER LOCATION

Sean M. Walsh

Matthew J. Janiak



TIE SKETCH
(SHOW ALL HELPFUL FEATURES)

PASTURE

PASTURE

30d Pole Spike West
side 9" Red Cedar

12.06'

30d Pole Spike North
side 6" Red Oak

22.82'

HEDGE ROW

HEDGE ROW

37.00'

30d Pole Spike South
side 16" Red Oak

31.56'

3/5"x24" iron rod placed

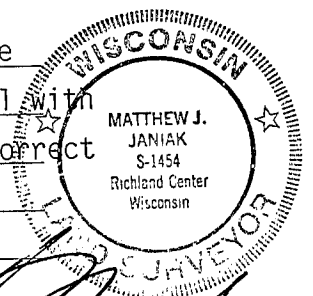
PASTURE

PASTURE

SURVEYOR'S CERTIFICATE

SEAL S. 1454

I, Matthew J. Janiak, DO HEREBY CERTIFY THAT I located a stone at the
above corner. No record of this stone could be located. Location fit well with
adjacent corners to the North-South and West. I accepted this stone as correct
and referenced it as shown hereon.



DATED THIS 28th DAY OF September 19 92

REGISTERED LAND SURVEYOR

76.5