

SEP 30 1992

GOVERNMENT CORNER RECORD

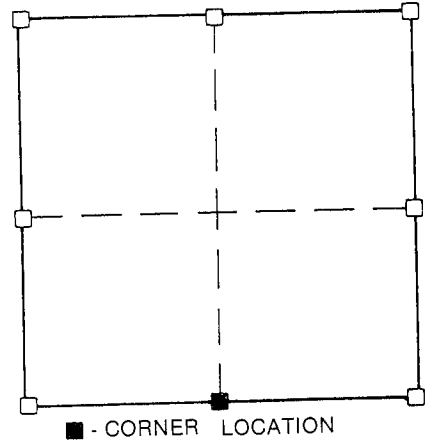
South $\frac{1}{4}$ CORNER, SECTION 21, TOWNSHIP 5 NORTH, RANGE 2 ~~EAST~~ - WEST,
TOWN, ~~OF~~ ~~VILLAGE~~ OF Liberty
TYPE OF MONUMENT: 2" iron pipe ELEVATION - M.S.L. DATUM _____

SECTION 21, T 5 N, R 2 ~~EW~~
TOWN OF Liberty

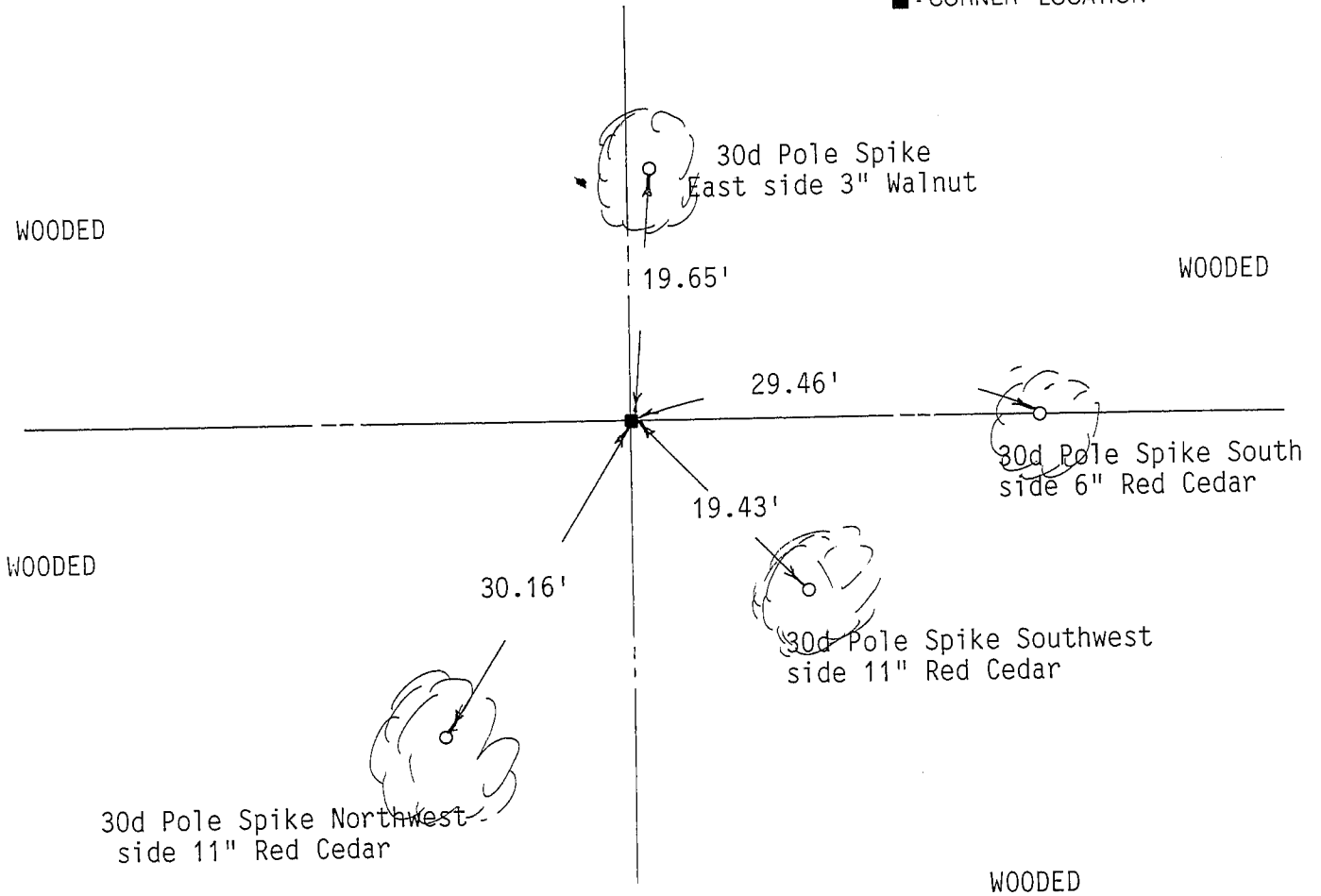
WITNESSES TO CORNER LOCATION

Sean M. Walsh

Matthew J. Janiak



TIE SKETCH
(SHOW ALL HELPFUL FEATURES)



SURVEYOR'S CERTIFICATE

SEAL S. 1454

I, Matthew J. Janiak, DO HEREBY CERTIFY THAT I located a 2" iron pipe
at the above corner. Last used by L. Austin. Location fit well with adjacent
corners to the North and West. I accepted this pipe as correct and referenced
it as shown hereon.



DATED THIS 28th DAY OF September, 19 92

REGISTERED LAND SURVEYOR

88