

SLF 30 1992

GOVERNMENT CORNER RECORD

West $\frac{1}{4}$ CORNER, SECTION 21, TOWNSHIP 5 NORTH, RANGE 2 EAST - WEST,
TOWN, CITY OR VILLAGE OF Liberty
TYPE OF MONUMENT: 2" iron pipe ELEVATION - M.S.L. DATUM _____

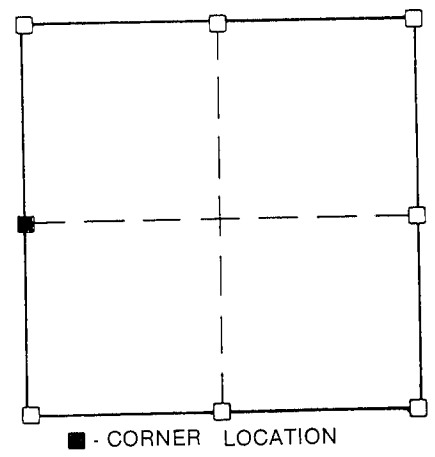
SECTION 21 T 5 N, R 2 EW

TOWN OF Liberty

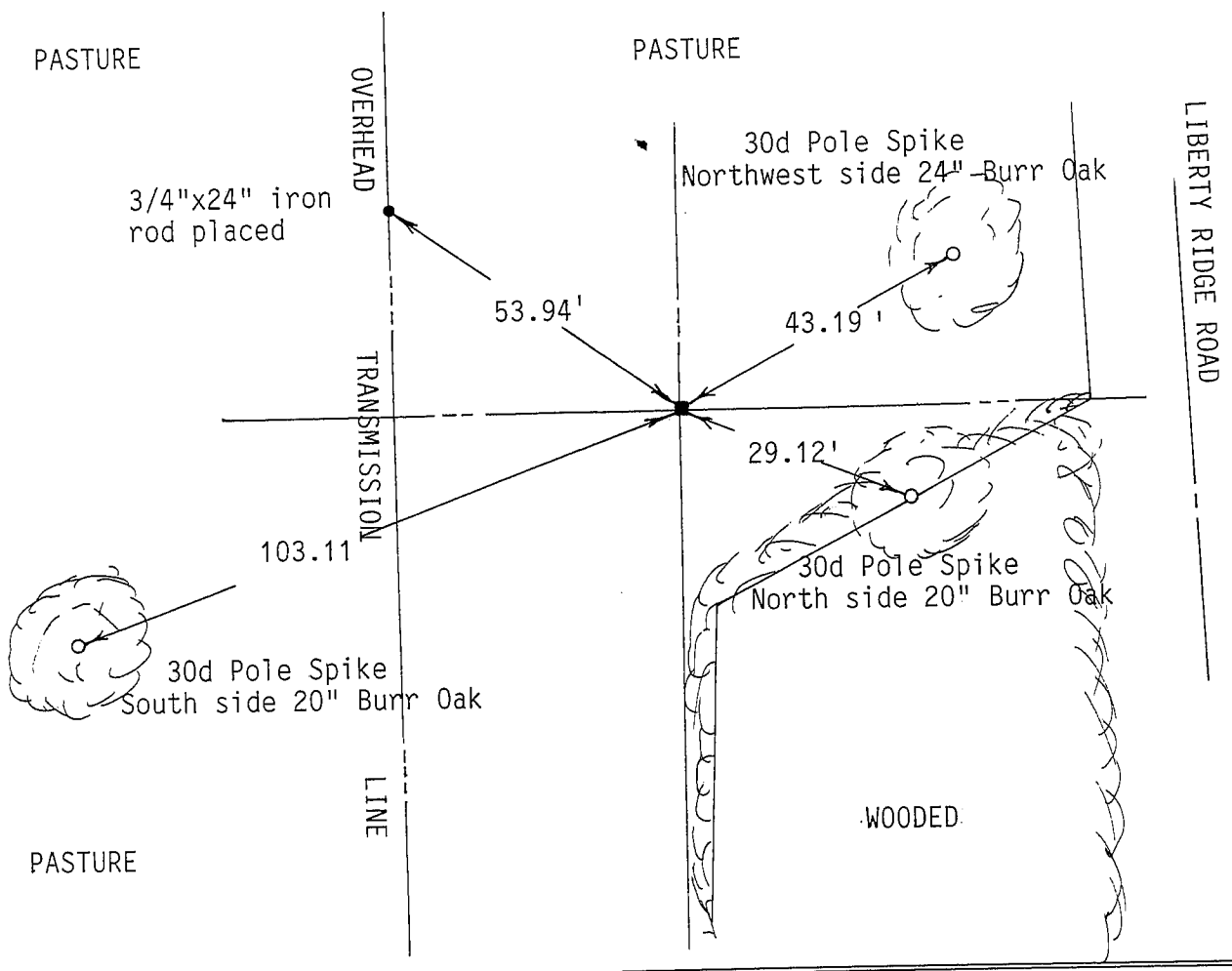
WITNESSES TO CORNER LOCATION

Matthew J. Janiak

Sean M. Walsh



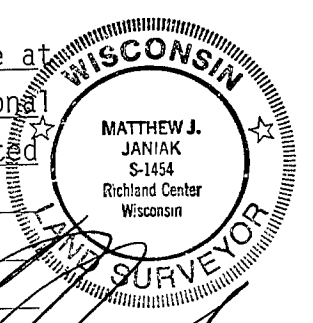
TIE SKETCH
(SHOW ALL HELPFUL FEATURES)



SURVEYOR'S CERTIFICATE

SEAL S. 1454

I, Matthew J. Janiak, DO HEREBY CERTIFY THAT I located a 2" iron pipe at the above corner. Corner was last used by L. Austin. Corner fit occupational evidence very well along with measurements to adjoining corners. I accepted this corner as correct and referenced it as shown hereon.



DATED THIS 28th DAY OF September, 19 92

REGISTERED LAND SURVEYOR

76