

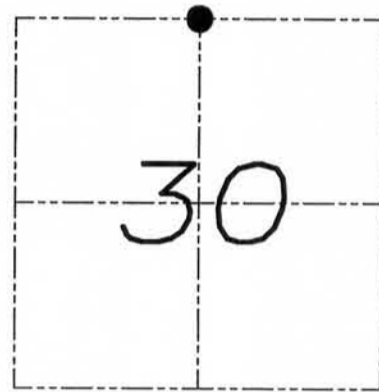
U.S. PUBLIC LAND SURVEY MONUMENT RECORD

Section 30, Town 5 North Range 2 West, Town of Liberty, Grant County, Wisconsin

CERTIFICATE

I, Larry L. Austin, do hereby certify that the corner location on this record was determined by me and/or under my direct supervision and that this U.S. public land survey monument record is correct and complete to the best of my knowledge and belief.

Larry L. Austin
 Larry L. Austin, S-1903



● = CORNER LOCATION

HISTORY OF CORNER

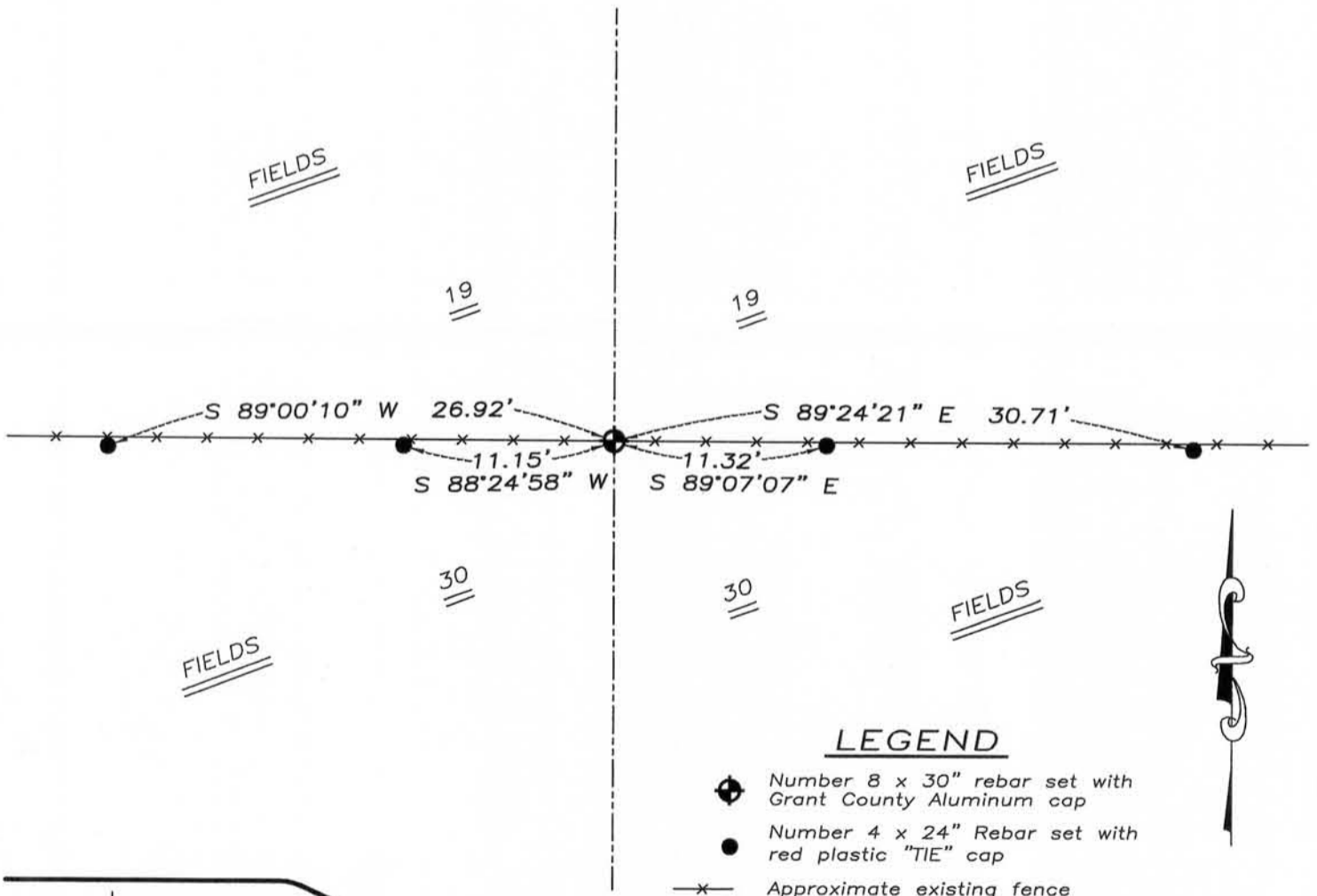
Corner was originally set in 1832 by Henry Parke. No other record of the corner was found.

CORNER EVIDENCE FOUND

I reset the corner proportionally between the Northwest corner and the Northeast corner of Section 30. I verified this location using EDM and GPS methods.

DESCRIPTION OF CORNER AND WITNESS MONUMENTS, references and accessories used to perpetuate the original or re-established location of this corner. Witnesses to monument location Bobby Sedgwick & Brad Digman & Shelby Blindert

SKETCH:



LEGEND

- Number 8 x 30" rebar set with Grant County Aluminum cap
- Number 4 x 24" Rebar set with red plastic "TIE" cap
- x- Approximate existing fence



NOT TO SCALE



4211 HWY 81 E, LANCASTER, WI 53813
 PHONE: 608-723-6363 FAX: 608-723-6702

JOB NUMBER 09S260-VINCENT
 FIELDBOOK: TDSR, 2904
 G:\T5NR2W\32
 H:\TIE\T5NR2W\92

DRAWN BY: SW AUSTIN
 APPROVED: LL AUSTIN

DEC 14 2011