

**U.S. PUBLIC LAND SURVEY MONUMENT RECORD - GRANT COUNTY, WI**

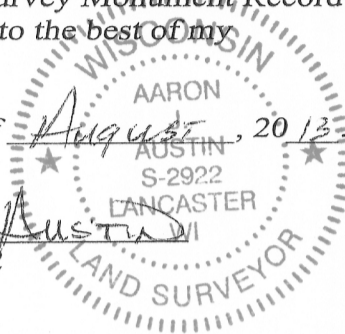
Section 18, Town 5 North Range 2 West, Town of Liberty

**CERTIFICATE:**

I, Aaron J. Austin, do hereby certify that the corner location on this record was determined by me and/or under my direct supervision and that this U.S. Public Land Survey Monument Record is correct and complete to the best of my knowledge and belief.

Dated this 15 day of August, 2013.

*Aaron J. Austin*  
 Aaron J. Austin, S-2922



● = CORNER LOCATION

GRANT COUNTY COORDINATES: N=542921.28 E=833688.88

HISTORY OF CORNER ESTABLISHMENT:

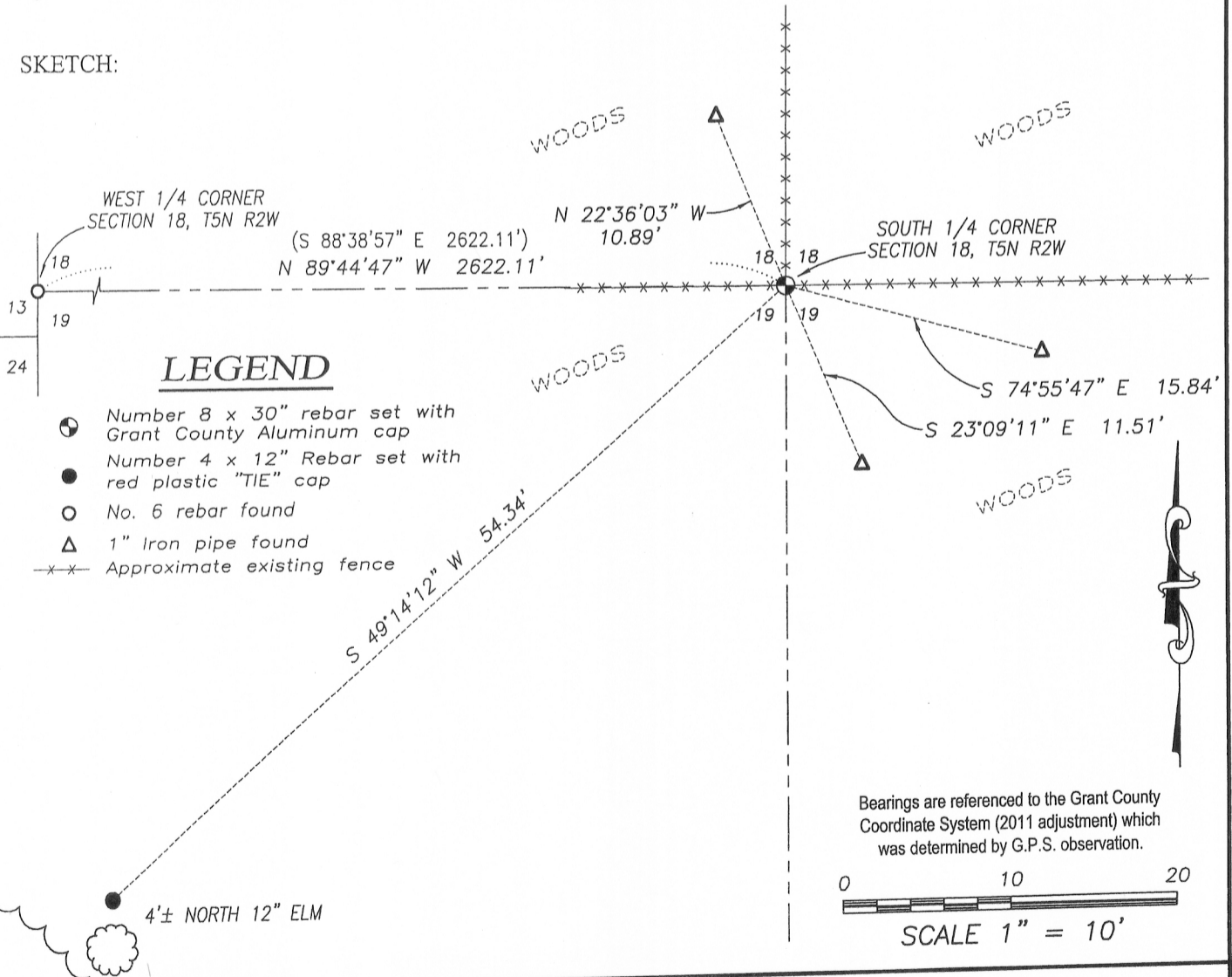
Corner originally set in 1832 by Parke. In 1844 Wilste tied to this corner on 2 surveys filed in Book A, Pages 226 and 227. In 1994 Larry Austin set a Grant County Aluminum Monument. This monument was used on C.S.M.'s No. 706 and 965 and a survey filed in Book 4, Page 19. No other record found for this corner.

DESCRIPTION OF CORNER EVIDENCE FOUND:

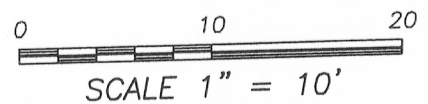
The Aluminum Monument could not be recovered. It appears that the monument may have been removed due to fencing. I retraced the corner location from ties found from an unfiled tie sheet provided by Larry Austin and a Section Summary prepared by Larry Austin dated 5-27-2003. This location was verified by E.D.M. and G.P.S. methods.

DESCRIPTION OF CORNER AND WITNESS MONUMENTS, references and accessories used to perpetuate the original or re-established location of this corner. Witnesses to corner location Shane Austin

SKETCH:



Bearings are referenced to the Grant County Coordinate System (2011 adjustment) which was determined by G.P.S. observation.



4211 HWY 81 E, LANCASTER, WI 53813  
 PHONE: 608-723-6363 FAX: 608-723-6702

JOB NO: 11S192  
 G:\GRANTDOT\HWY61B  
 H:\TIE\T5NR2W\72

FIELDBOOK: TDSR  
 DRAWN BY: SW AUSTIN  
 CREW: SW AUSTIN