

GRANT COUNTY CERTIFIED LAND CORNER

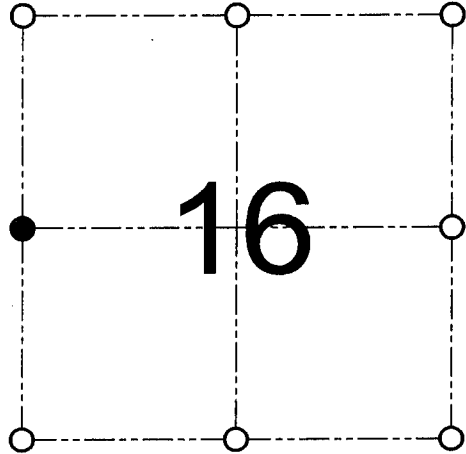
CORNER NUMBER 56

CERTIFICATE:

I, Larry L. Austin, do hereby certify that on the 26th day of October, 2000, I found no evidence of the West 1/4 corner of Section 16, Town 5 North, Range 2 West, of the 4th Principal Meridian, and I re-established said corner according to the Wisconsin statutes as shown and described hereon.

Dated this 12 day of December, 2000

Larry L. Austin
Larry L. Austin S-1903



● = CORNER LOCATION

WEST 1/4 CORNER OF
SECTION 16, T 5 N R 2 W
TOWN OF LIBERTY

HISTORY OF ORIGINAL CORNER ESTABLISHMENT:

Corner was originally set in 1832 by Harvey Parke.
No other record of the corner was found.

DESCRIPTION OF CORNER EVIDENCE FOUND:

I found no evidence of the location of the corner. I reset the corner proportionately between the NW and SW corners of Section 16. This location was verified by an occupied 40 South of the corner.

DESCRIPTION OF CORNER AND WITNESS MONUMENTS, references and accessories used to perpetuate the original or re-established location of this corner

WITNESS TO THE CORNER LOCATION: TIM FAUVER & SHELBY BLINDERT & BOBBY SEDGWICK

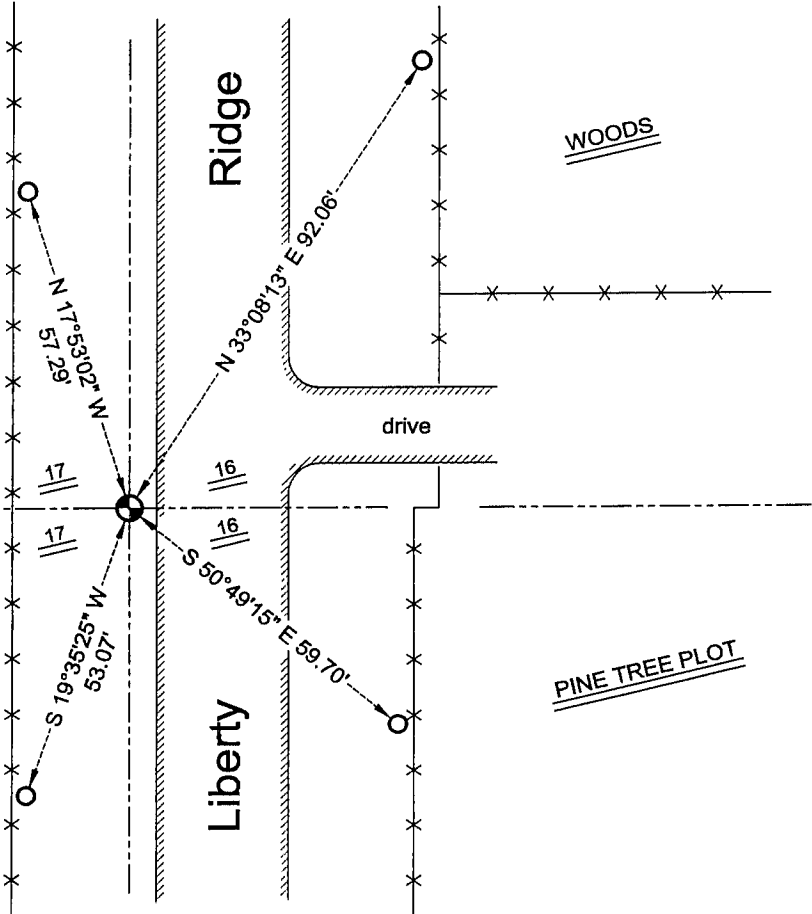
SKETCH:



* SEE SECTION SUMMARY FOR *
RELATIONSHIP TO AREA CORNERS

LEGEND

- Number 8 x 30" rebar set with Grant County Aluminum cap
- Number 4 x 24" rebar set with red plastic cap
- Approximate existing fence



AUSTIN ENGINEERING, LLC
4211 HWY 81 E, LANCASTER, WI 53813
PHONE 608-723-6363 FAX 608-723-6702

FIELDBOOK: SDR33, 2032
G:\T5NR2W\09
C:\SC14\SWA\TIE\T5NR2W\56

DRAWN BY: SW AUSTIN
APPROVED: LL AUSTIN
CREW: BS - SB - SA - TF