

U.S. PUBLIC LAND SURVEY MONUMENT RECORD - GRANT COUNTY, WI

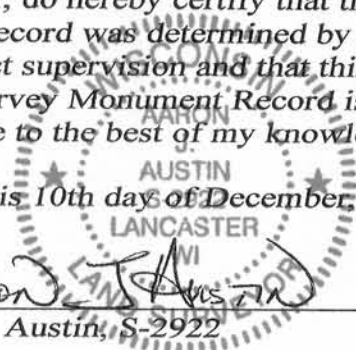
Section 24, Town 5 North Range 2 West, Town of Liberty

CERTIFICATE:

I, Aaron J. Austin, Wisconsin Professional Land Surveyor, do hereby certify that the corner location on this record was determined by me and/or under my direct supervision and that this U.S. Public Land Survey Monument Record is correct and complete to the best of my knowledge and belief.

Dated this 10th day of December, 2015.

Aaron J. Austin
 Aaron J. Austin, S-2922



● = CORNER LOCATION

HISTORY OF CORNER ESTABLISHMENT:

- 1832-Parke Set original corner.
- 1995-L. Austin prepared a Survey Monument Record for the corner.
- 1996-L. Austin tied to the corner on a Survey in Book Z, Page 68.
- 1999-L. Austin tied to the corner on a Survey in Book 5, Page 48.
- 1999-L. Austin tied to the corner on a Survey in Book 6, Page 20.
- 2005-L. Austin tied to the corner on a Survey in Book 16, Page 71.
- 2007-Tomashek tied to the corner on C.S.M. No. 1342.
- 2014-A. Austin tied to the corner on a Survey in Book 35, Page 1.

DESCRIPTION OF CORNER EVIDENCE FOUND:

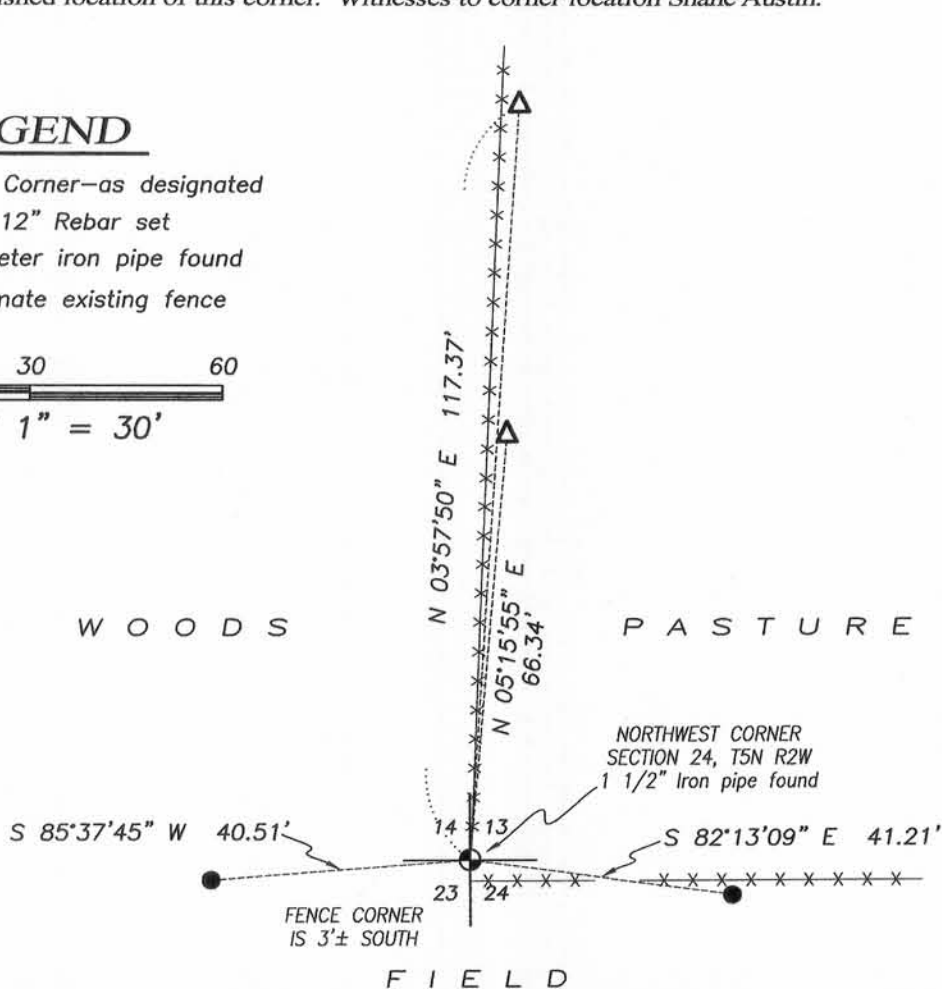
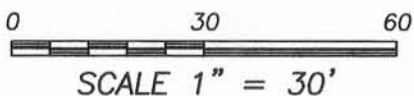
I found the 1 1/2" Iron pipe at the corner. I found 2 witness corners set by Larry Austin in 1995. I set 2 additional witness corners and verified this location with E.D.M. and G.P.S. methods.

DESCRIPTION OF CORNER AND WITNESS MONUMENTS, references and accessories used to perpetuate the original or re-established location of this corner. Witnesses to corner location Shane Austin.

SKETCH:

LEGEND

- ⊙ Section Corner—as designated
- 1/2" x 12" Rebar set
- △ 1" diameter iron pipe found
- x-x- Approximate existing fence



Bearings referenced to the Grant County Coordinate System (2011 adjustment) which was determined by G.P.S. observation.



4211 HWY 81 E, LANCASTER, WI 53813
 PHONE: 608-723-6363 FAX: 608-723-6702

JOB NO: 15s244
 H:CRD\15s244
 H:\TIE\T5NR2W\63

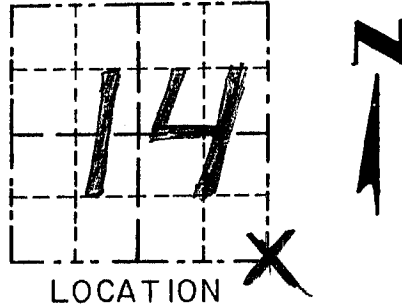
FIELDBOOK: TDSR
 DRAWN BY: AJ AUSTIN
 CREW: SW AUSTIN

GRANT COUNTY

Survey Monument Record

TYPE OF MONUMENT 1 1/2" IRON PIPE FOUND
 STATE PLANE COORDINATES: N _____
 E _____
 ELEVATION — M.S.L. DATUM: _____
 THETA ANGLE: _____
 FIELD BOOK: 9504
 PAGE 26

CORNER NO. 63
 SECTION 14
 TOWN 5N
 RANGE 2W
SE COR.



LOCATION
 (Indicated by "X")

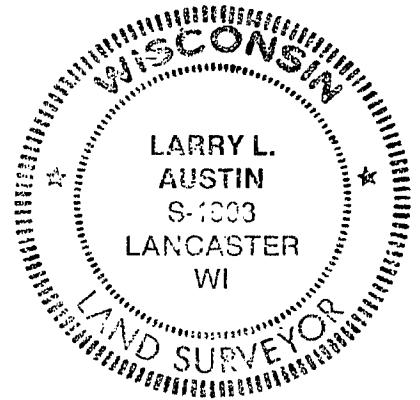
BASIS FOR MONUMENT LOCATION

(Use reverse side if necessary)

Show info such as: History of corner, with reference to Vol. and pg., dates, surveyor; exact description of monument replaced; if location computed, by taped or EDM traverse; landowner, remarks, etc.

SEAL:

ORIGINAL CORNER SET
 IN 1832 BY PARKE.
 I FOUND A 1 1/2" IRON PIPE AT
 OCCUPIED LOCATION; ACCEPTED
 ITS LOCATION AFTER VERIFICATION
 BY EDM TRAVERSE; THIS CORNER
 USED FOR A BEARING REFERENCE
 ON A 1977 SURVEY BY
 SCHMIT.



CERTIFIED CORRECT

Larry L. Austin
 Registered Land Surveyor

DATE: 10/24/95

TIE SKETCH

Show at least three (3) ties and monument

