

GRANT COUNTY CERTIFIED LAND CORNER

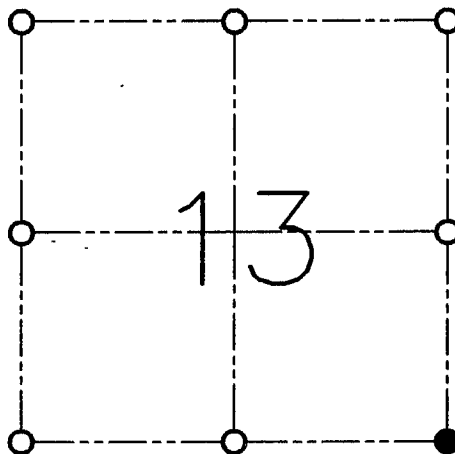
CORNER NO. 61

CERTIFICATE:

I, LARRY L. AUSTIN, DO HEREBY CERTIFY THAT ON NINETEENTH DAY OF MARCH, 1999, I FOUND EVIDENCE OF THE SOUTHEAST CORNER OF SECTION 13, TOWN 5 NORTH, RANGE 2 WEST, OF THE FOURTH PRINCIPAL MERIDIAN, AND I RE-ESTABLISHED SAID CORNER ACCORDING TO THE WISCONSIN STATUTES AS SHOWN AND DESCRIBED HEREON.

DATED THIS NINTH DAY OF APRIL, 1999

Larry L. Austin
LARRY L. AUSTIN S-1903



● = CORNER LOCATION

**SOUTHEAST CORNER SECTION 13
T 5 N R 2 W
TOWN OF LIBERTY**

HISTORY OF ORIGINAL CORNER ESTABLISHMENT:

CORNER WAS SET IN 1832 BY SIBLEY.

DESCRIPTION OF CORNER EVIDENCE FOUND:

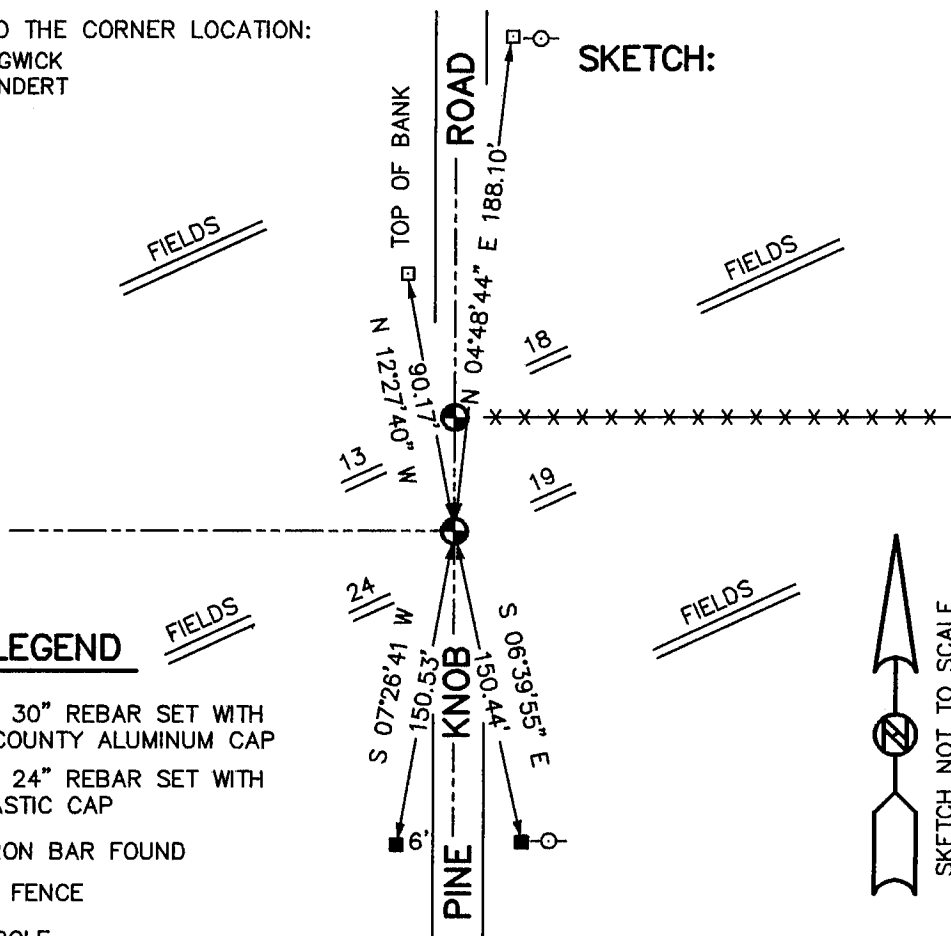
I RESET THE CORNER BASED ON A TIE SHEET I FILED. (DATED 1997)
VERIFIED THIS LOCATION USING E.D.M. AND G.P.S. METHODS.

DESCRIPTION OF CORNER AND WITNESS MONUMENTS, REFERENCES AND ACCESSORIES USED TO PERPETUATE THE ORIGINAL OR RE-ESTABLISHED LOCATION OF THIS CORNER:

WITNESS TO THE CORNER LOCATION:

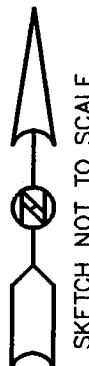
BOBBY SEDGWICK
SHELBY BLINDERT

SKETCH:



LEGEND

- NO. 8 X 30" REBAR SET WITH GRANT COUNTY ALUMINUM CAP
- NO. 4 X 24" REBAR SET WITH RED PLASTIC CAP
- NO. 4 IRON BAR FOUND
- *—*— EXISTING FENCE
- UTILITY POLE



GRANT COUNTY CERTIFIED LAND CORNER

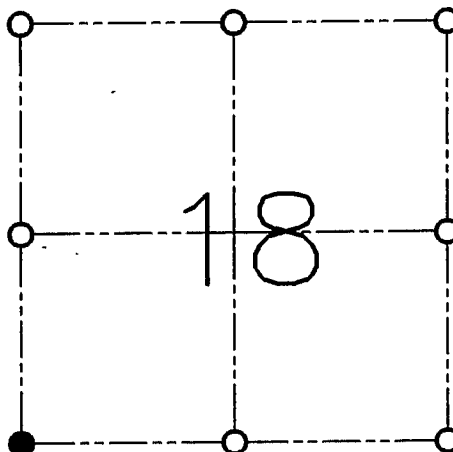
CORNER NO. 73

CERTIFICATE:

I, LARRY L. AUSTIN, DO HEREBY CERTIFY THAT ON NINETEENTH DAY OF MARCH, 1999, I FOUND OCCUPATIONAL EVIDENCE OF THE SOUTHWEST CORNER SECTION 18, TOWN 5 NORTH, RANGE 1 WEST, OF THE FOURTH PRINCIPAL MERIDIAN, AND I RE-ESTABLISHED SAID CORNER ACCORDING TO THE WISCONSIN STATUTES AS SHOWN AND DESCRIBED HEREON.

DATED THIS NINTH DAY OF APRIL, 1999

Larry L. Austin
LARRY L. AUSTIN S-1903



● = CORNER LOCATION

**SOUTHWEST CORNER
SECTION 18, T 5 N R 1 W
TOWN OF CLIFTON**

HISTORY OF ORIGINAL CORNER ESTABLISHMENT:

CORNER WAS SET IN 1832 BY HARVEY PARKE.

DESCRIPTION OF CORNER EVIDENCE FOUND:

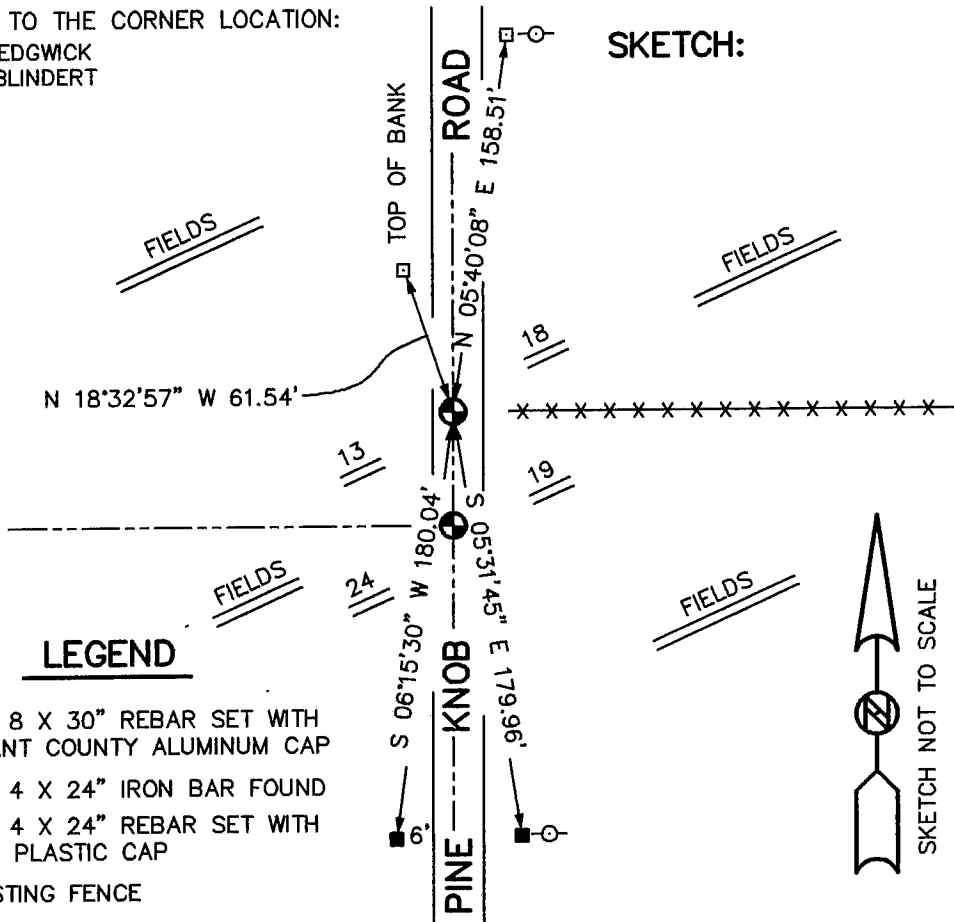
I SET THE CORNER ON THE EAST LINE OF SECTION 13 AT THE RECORDED OFFSET FROM THE SOUTHEAST CORNER OF SECTION 13, T5N R2W. VERIFIED THIS LOCATION USING E.D.M. AND G.P.S. METHODS.

DESCRIPTION OF CORNER AND WITNESS MONUMENTS, REFERENCES AND ACCESSORIES USED TO PERPETUATE THE ORIGINAL OR RE-ESTABLISHED LOCATION OF THIS CORNER:

WITNESS TO THE CORNER LOCATION:

BOBBY SEDGWICK
SHELBY BLINDERT

SKETCH:



LEGEND

- NO. 8 X 30" REBAR SET WITH GRANT COUNTY ALUMINUM CAP
- NO. 4 X 24" IRON BAR FOUND
- NO. 4 X 24" REBAR SET WITH RED PLASTIC CAP
- x-x- EXISTING FENCE
- UTILITY POLE

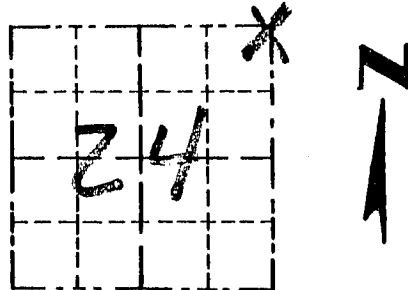


Survey Monument Record

TYPE OF MONUMENT RAILROAD SPIKE SET
3" BELOW SURFACE

CORNER NO. 61
 SECTION 24
 TOWN 5N
 RANGE 2W

FIELD BOOK: 96-21
 PAGE (6)



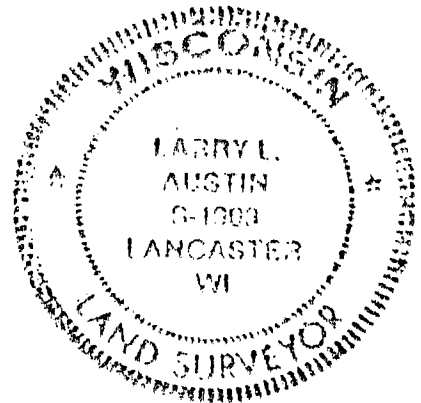
LOCATION
 (Indicated by "X")

BASIS FOR MONUMENT LOCATION

(Use reverse side if necessary)

Show info such as: History of corner, with reference to Vol. and pg., dates, surveyor; exact description of monument replaced; if location computed, by taped or EDM traverse; landowner, remarks, etc.

SEAL:



CORNER SET IN 1832 BY SIBLEY,
 NO RECORD OF CORNER FOUND
 SINCE ORIGINAL SURVEY. CORNER
 SET AT THE RECORDED OFFSET
 FROM A EXISTING FENCE EAST.
 ACCEPTED ITS LOCATION AFTER
 A EDM TRAVERSE OF AREA.

CERTIFIED CORRECT

Larry L. Austin
 Registered Land Surveyor

DATE: _____

TIE SKETCH

Show at least three (3) ties and monument

LEGEND

- ▲ RAILROAD SPIKE SET
- 1/2" X 15" IRON BAR SET
- POWER POLE
- XX EXISTING FENCE

