

U.S. PUBLIC LAND SURVEY MONUMENT RECORD - GRANT COUNTY, WI

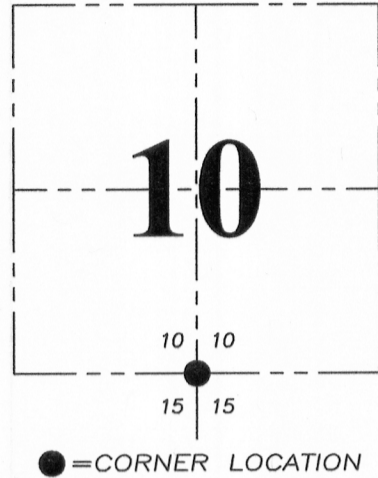
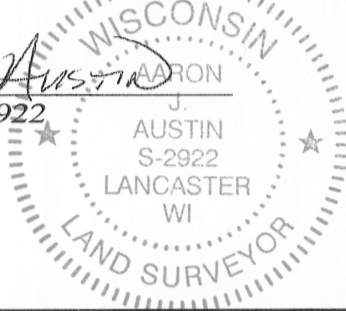
Section 10, Town 5 North Range 2 West, Town of Liberty

CERTIFICATE:

I, Aaron J. Austin, Wisconsin Professional Land Surveyor, do hereby certify that the corner location on this record was determined by me and/or under my direct supervision and that this U.S. Public Land Survey Monument Record is correct and complete to the best of my knowledge and belief.

Dated this 12th day of February, 2015.

Aaron J. Austin
 Aaron J. Austin, S-2922



HISTORY OF CORNER ESTABLISHMENT:

1832-Henry Parke set original corner.
 1877-Joel Barber reset the corner.
 No other record found for this corner.

DESCRIPTION OF CORNER EVIDENCE FOUND:

Barber noted that original corner and bearing trees were gone. The bearing trees measured by Barber were unable to be recovered. I reset the corner midway and equidistant between the Southwest corner and the Southeast corner of Section 10 as noted on Barber's Survey. This corner was verified by G.P.S. and E.D.M. methods.

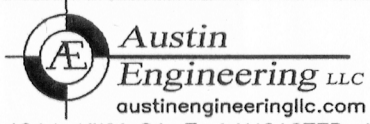
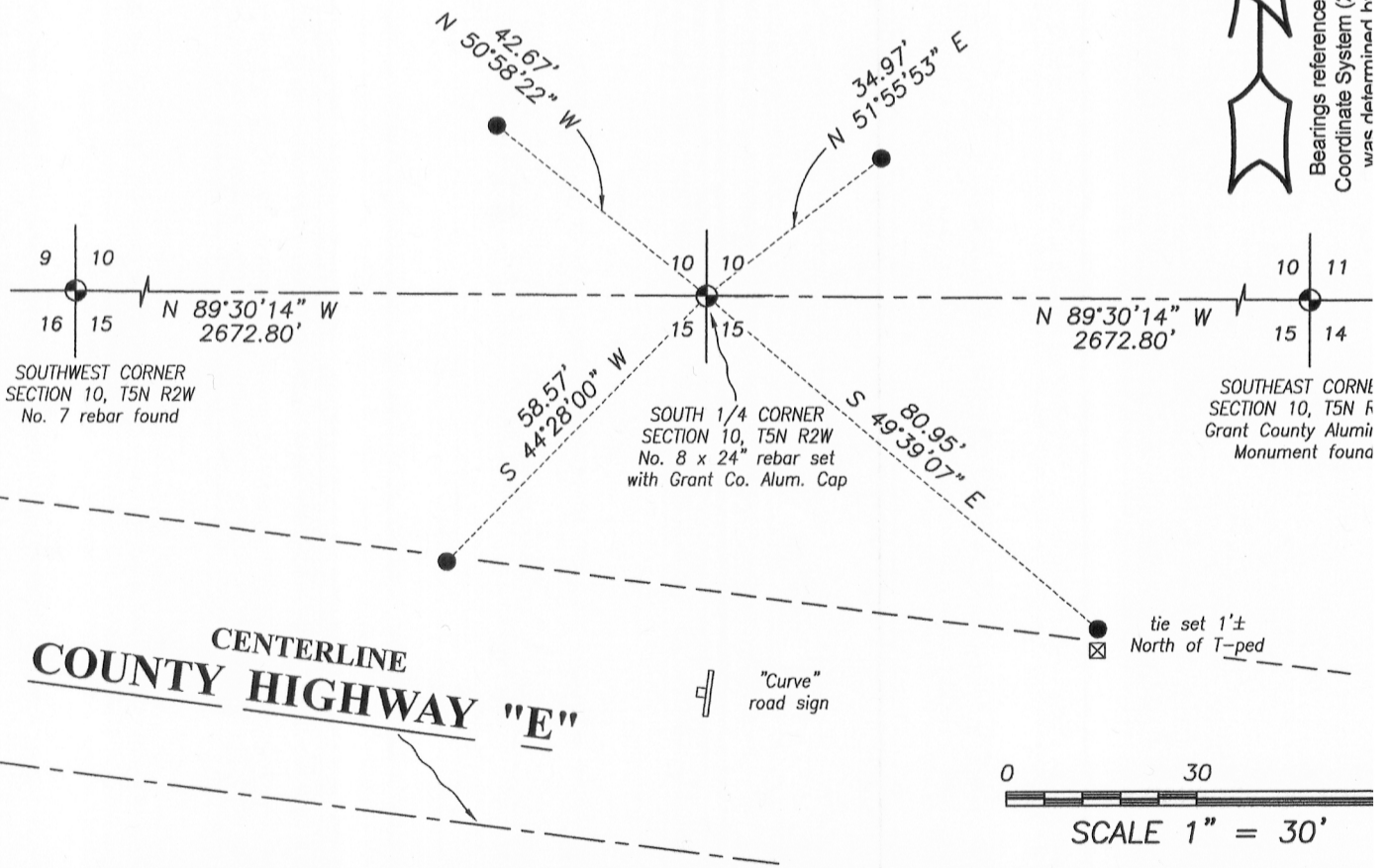
DESCRIPTION OF CORNER AND WITNESS MONUMENTS, references and accessories used to perpetuate the original or re-established location of this corner. Witnesses to corner location Shane Austin.

SKETCH:

LEGEND

- ⊕ Section corner—as designated
- Number 4 x 12" Rebar set

Bearings referenced to the Grant County Coordinate System (2011 adjustment) which was determined by G.P.S. observation



4211 HWY 81 E, LANCASTER, WI 53813
 PHONE: 608-723-6363 FAX: 608-723-6702

JOB NO: 14s198
 H:\CRD\14s198-HOOD
 H:\TIE\T5NR2W\46

FIELDBOOK: TDSR
 DRAWN BY: AJ AUSTIN
 CREW: SW AUSTIN