

GRANT COUNTY CERTIFIED LAND CORNER

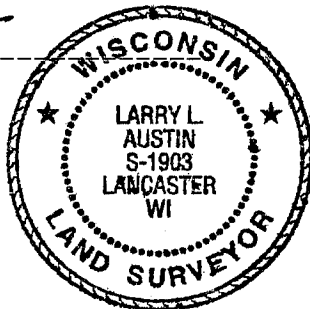
CORNER NUMBER 37

CERTIFICATE:

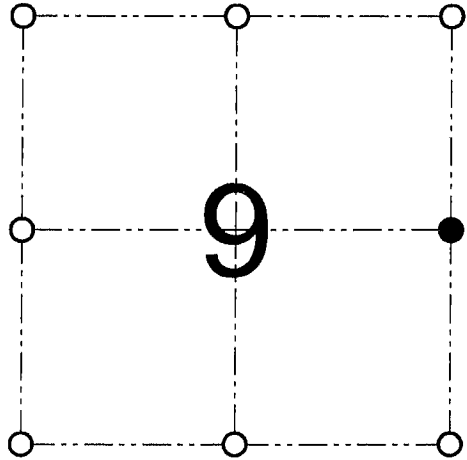
I, Larry L. Austin, do hereby certify that on the 26th day of October, 2000, I found no evidence of the East 1/4 corner of Section 9, Town 5 North, Range 2 West, of the 4th Principal Meridian, and I re-established said corner according to the Wisconsin statutes as shown and described hereon.

Dated this 30th day of November, 2000

Larry L. Austin
Larry L. Austin S-1903



SEAL



● = CORNER LOCATION

EAST 1/4 CORNER OF
SECTION 9, T 5 N R 2 W
TOWN OF LIBERTY

HISTORY OF ORIGINAL CORNER ESTABLISHMENT:

Corner was originally set in 1832 by Harvey Parke. In 1877 Barber found, tied and accepted a fence corner. No other record of the corner was found.

DESCRIPTION OF CORNER EVIDENCE FOUND:

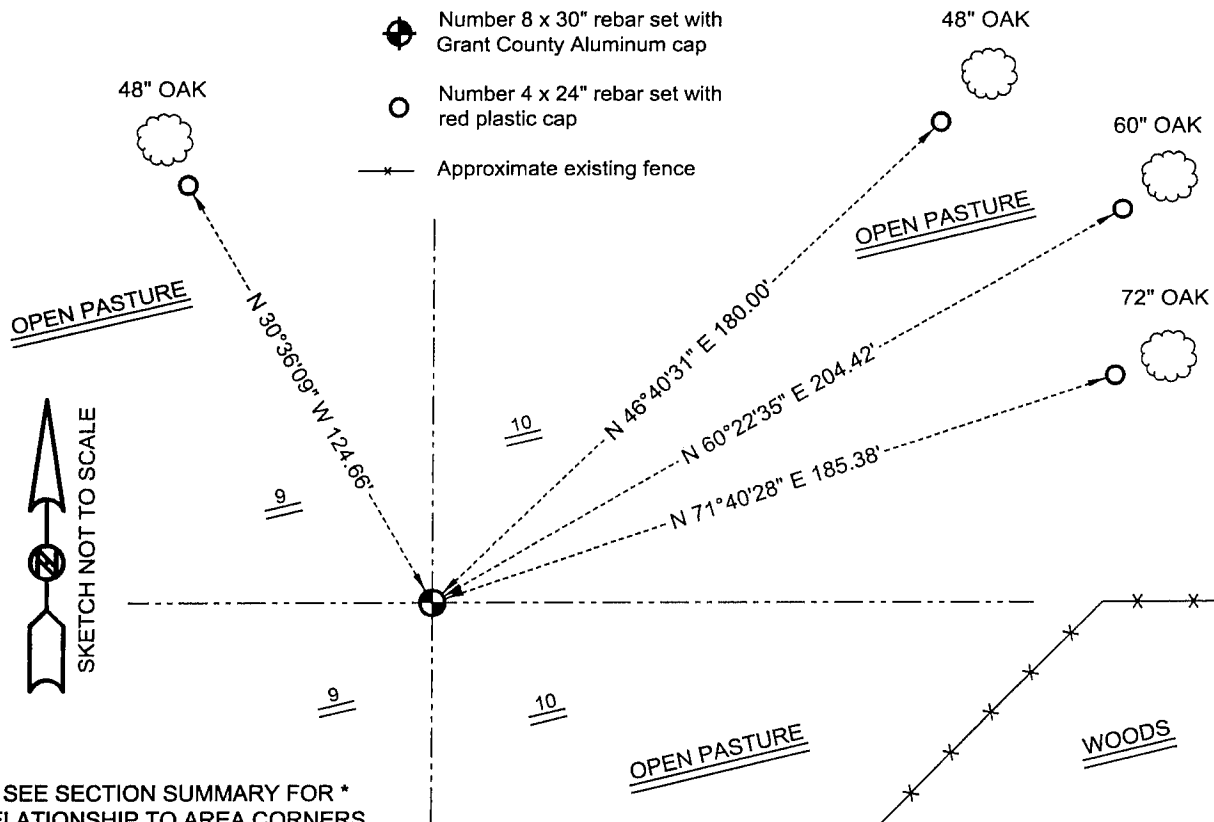
I found no evidence of the corner. I reset the corner based on occupational evidence East of the corner and occupied 40's North of the corner. Verified this location using EDM & GPS methods.

DESCRIPTION OF CORNER AND WITNESS MONUMENTS, references and accessories used to perpetuate the original or re-established location of this corner

WITNESS TO THE CORNER LOCATION: TIM FAUVER & SHELBY BLINDERT & BOBBY SEDGWICK

SKETCH:

LEGEND



* SEE SECTION SUMMARY FOR *
RELATIONSHIP TO AREA CORNERS

AUSTIN ENGINEERING, LLC
4211 HWY 81 E, LANCASTER, WI 53813
PHONE 608-723-6363 FAX 608-723-6702

FIELDBOOK: SDR33, 2032
G:\T5NR2W\09
C:\SC14\SWA\TIE\T5NR2W\37

DRAWN BY: SW AUSTIN
APPROVED: LL AUSTIN
CREW: BS - SB - SA - TF