

GRANT COUNTY CERTIFIED LAND CORNER

CORNER NUMBER 48

CERTIFICATE:

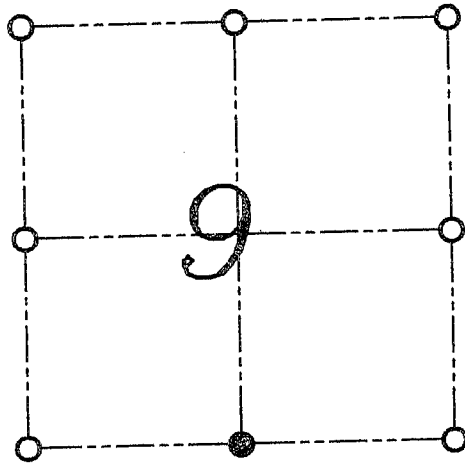
I, LARRY L. AUSTIN, DO HEREBY CERTIFY THAT ON 29th DAY OF OCTOBER, 1999, I FOUND EVIDENCE OF THE SOUTH 1/4 CORNER OF SECTION 9, TOWN 5 NORTH, RANGE 2 WEST, OF THE FOURTH PRINCIPAL MERIDIAN, AND I RE-ESTABLISHED SAID CORNER ACCORDING TO THE WISCONSIN STATUTES AS SHOWN AND DESCRIBED HEREON.

DATED THIS 29th DAY OF NOVEMBER, 1999

Larry L. Austin
LARRY L. AUSTIN S-1903



SEAL



● = CORNER LOCATION

SOUTH 1/4 OF
SECTION 9, T 5 N R 2 W
TOWN OF LIBERTY

HISTORY OF ORIGINAL CORNER ESTABLISHMENT:

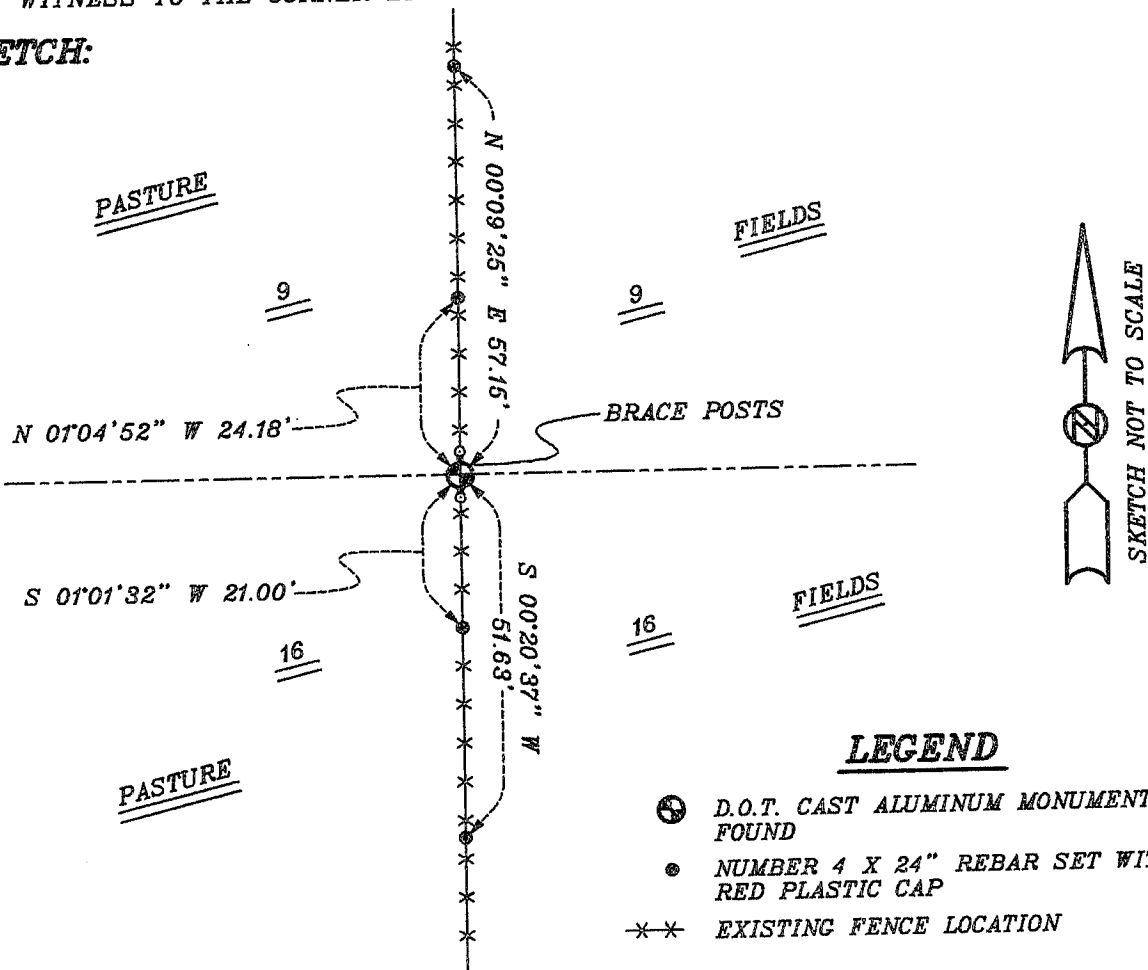
CORNER WAS SET IN 1832 BY HARVEY PARKE.
IN 1995 BRUCE BOWDEN LOCATED A D.O.T. ALUMINUM MONUMENT.

DESCRIPTION OF CORNER EVIDENCE FOUND:

I FOUND THE CAST ALUMINUM D.O.T. MONUMENT AND
ACCEPTED IT'S LOCATION AFTER AN E.D.M. AND G.P.S.
TRAVERSE OF THE AREA.

**DESCRIPTION OF CORNER AND WITNESS MONUMENTS, REFERENCES AND ACCESSORIES
USED TO PERPETUATE THE ORIGINAL OR RE-ESTABLISHED LOCATION OF THIS CORNER:**
WITNESS TO THE CORNER LOCATION: BOBBY SEDGWICK ; SHELBY BLINDERT

SKETCH:



LEGEND

- D.O.T. CAST ALUMINUM MONUMENT FOUND
- NUMBER 4 X 24" REBAR SET WITH RED PLASTIC CAP
- *-* EXISTING FENCE LOCATION