

U.S. PUBLIC LAND SURVEY MONUMENT RECORD - GRANT COUNTY, WI

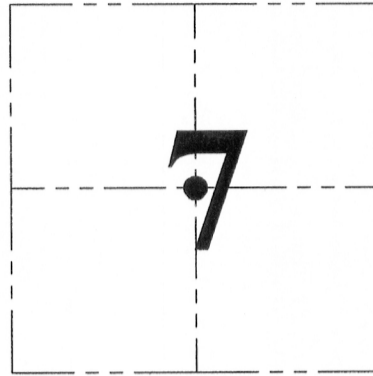
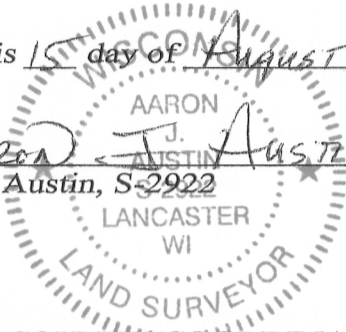
Section 7, Town 5 North Range 2 West, Town of Liberty

CERTIFICATE:

I, Aaron J. Austin, do hereby certify that the corner location on this record was determined by me and/or under my direct supervision and that this U.S. Public Land Survey Monument Record is correct and complete to the best of my knowledge and belief.

Dated this 15 day of August, 2013.

Aaron J. Austin
 Aaron J. Austin, S-2922



● = CORNER LOCATION

GRANT COUNTY COORDINATES: N=550904.13 E=833691.36

HISTORY OF CORNER ESTABLISHMENT:

Corner was not set with original survey.
 No record of this corner was found.

DESCRIPTION OF CORNER EVIDENCE FOUND:

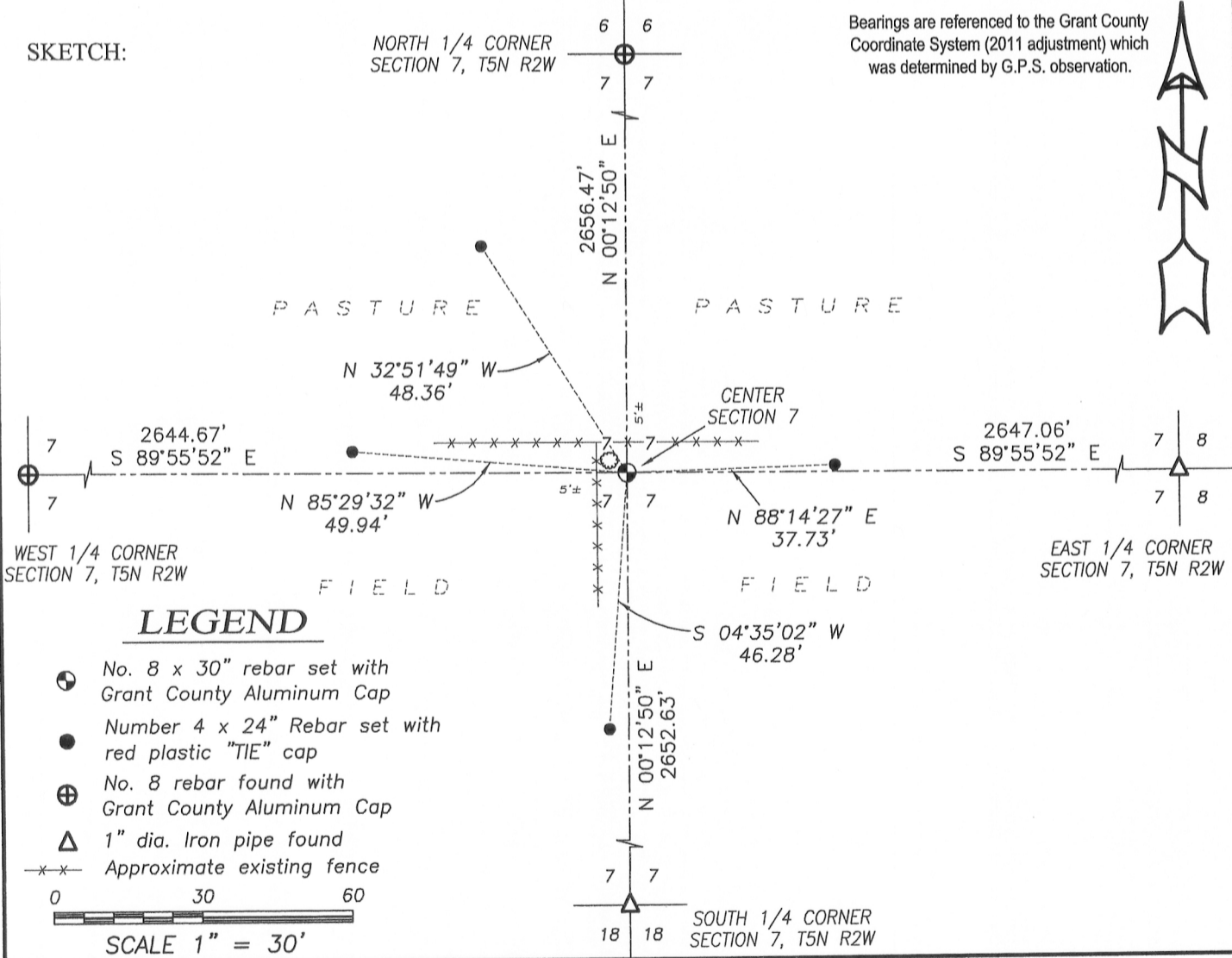
Corner was set at the intersection of the East-West 1/4 line and the North-South 1/4 line of Section 7. Corner location was verified by E.D.M. and G.P.S methods.

DESCRIPTION OF CORNER AND WITNESS MONUMENTS, references and accessories used to perpetuate the original or re-established location of this corner. Witnesses to corner location Shane Austin.

SKETCH:

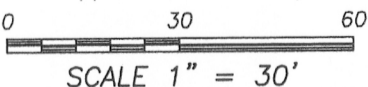
NORTH 1/4 CORNER SECTION 7, T5N R2W

Bearings are referenced to the Grant County Coordinate System (2011 adjustment) which was determined by G.P.S. observation.



LEGEND

- ⊙ No. 8 x 30" rebar set with Grant County Aluminum Cap
- Number 4 x 24" Rebar set with red plastic "TIE" cap
- ⊕ No. 8 rebar found with Grant County Aluminum Cap
- △ 1" dia. Iron pipe found
- x-x- Approximate existing fence



Austin Engineering LLC
 austinengineeringllc.com

4211 HWY 81 E, LANCASTER, WI 53813
 PHONE: 608-723-6363 FAX: 608-723-6702

JOB NO: 11S192-A
 G:\GRANTDOT\HWY61B
 H:\TIE\T5NR2W\34.5

FIELDBOOK: TDSR
 DRAWN BY: AJ AUSTIN
 CREW: SW AUSTIN

34.5

AUG 15 2013