

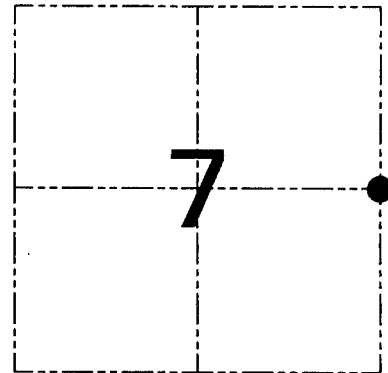
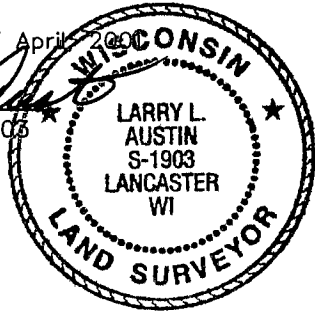
U.S. PUBLIC LAND SURVEY MONUMENT RECORD - GRANT COUNTY, WI
 Section 7, Town 5 North Range 2 West, Town of Liberty

CERTIFICATE

I, Larry L. Austin, do hereby certify that the corner location on this record was determined by me and/or under my direct supervision and that this U.S. public land survey monument record is correct and complete to the best of my knowledge and belief.

Dated this 4th day of April 2001

Larry L. Austin
 Larry L. Austin S-1903



● = CORNER LOCATION

HISTORY OF CORNER ESTABLISHMENT

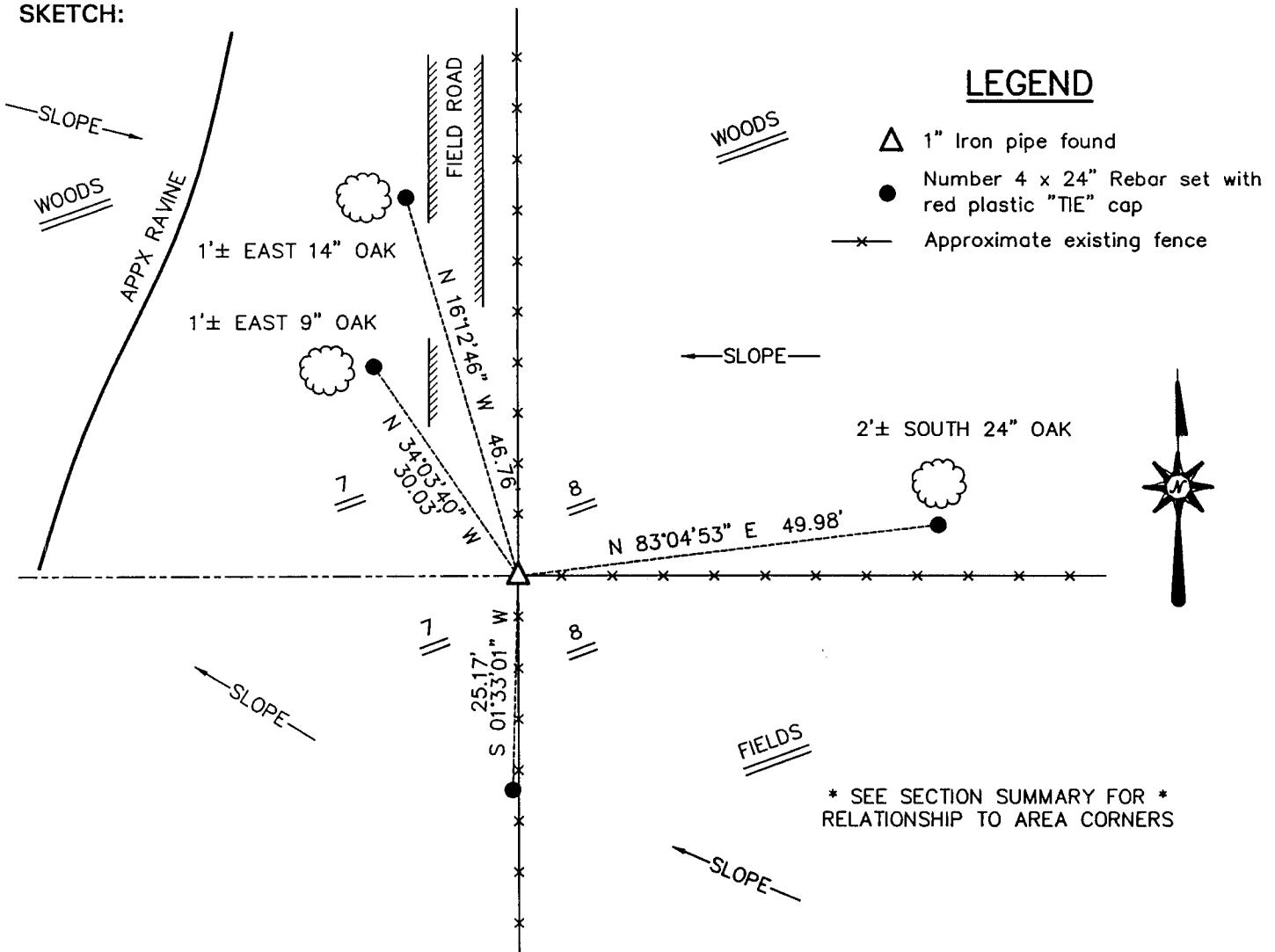
Corner was originally set in 1832 by Harvey Parke. In 1980 David Davis set a 1" iron pipe. No other record of the corner was found.

DESCRIPTION OF CORNER EVIDENCE FOUND

I found an existing 1" iron pipe at an occupied fence corner. I accepted the 1" iron pipe after an EDM & GPS traverse of the area.

DESCRIPTION OF CORNER AND WITNESS MONUMENTS, references and accessories used to perpetuate the original or re-established location of this corner. Witnesses to the corner location Bobby Sedgwick & Shelby Blindert & Tim Fauver.

SKETCH:



SKETCH NOT TO SCALE

AUSTIN ENGINEERING, LLC
 4211 HWY 81 EAST, LANCASTER, WI 53813
 PHONE 608-723-6363 FAX 608-723-6702

FIELDBOOK: SDR33, 2101
 G: \T5NR2W\09
 C: \SWA\TIE\T5NR2W\35
 CREW: BS-SB-SA-TF

DRAWN BY: SW AUSTIN
 APPROVED: LL AUSTIN

CORNER NUMBER 35

JUN 14 2001