

GRANT COUNTY CERTIFIED LAND CORNER

CORNER NO. 52

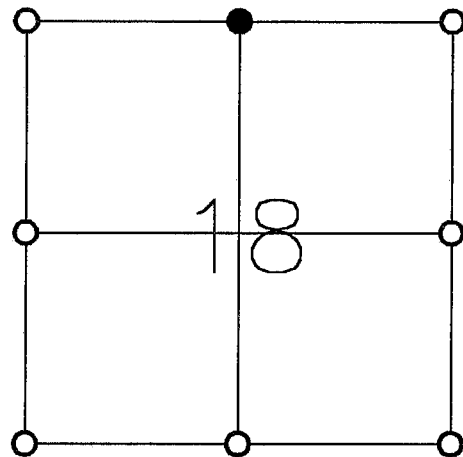
CERTIFICATE:

I, LARRY L. AUSTIN, DO HEREBY CERTIFY THAT ON 30 DAY OF SEPTEMBER, 1998, I FOUND OCCUPATIONAL EVIDENCE OF THE NORTH 1/4 CORNER OF SECTION 18, TOWN 5 NORTH, RANGE 2 WEST, OF THE FOURTH PRINCIPAL MERIDIAN, AND I RE-ESTABLISHED SAID CORNER ACCORDING TO THE WISCONSIN STATUTES AS SHOWN AND DESCRIBED HEREON.

DATED THIS 4 DAY OF JANUARY, 1999

Larry L. Austin
LARRY L. AUSTIN S-1903

T 5 N R 2 W
TOWN OF LIBERTY



● = CORNER LOCATION



SEAL

HISTORY OF ORIGINAL CORNER ESTABLISHMENT:

CORNER SET IN 1832 BY HARVEY PARKE.

DESCRIPTION OF CORNER EVIDENCE FOUND:

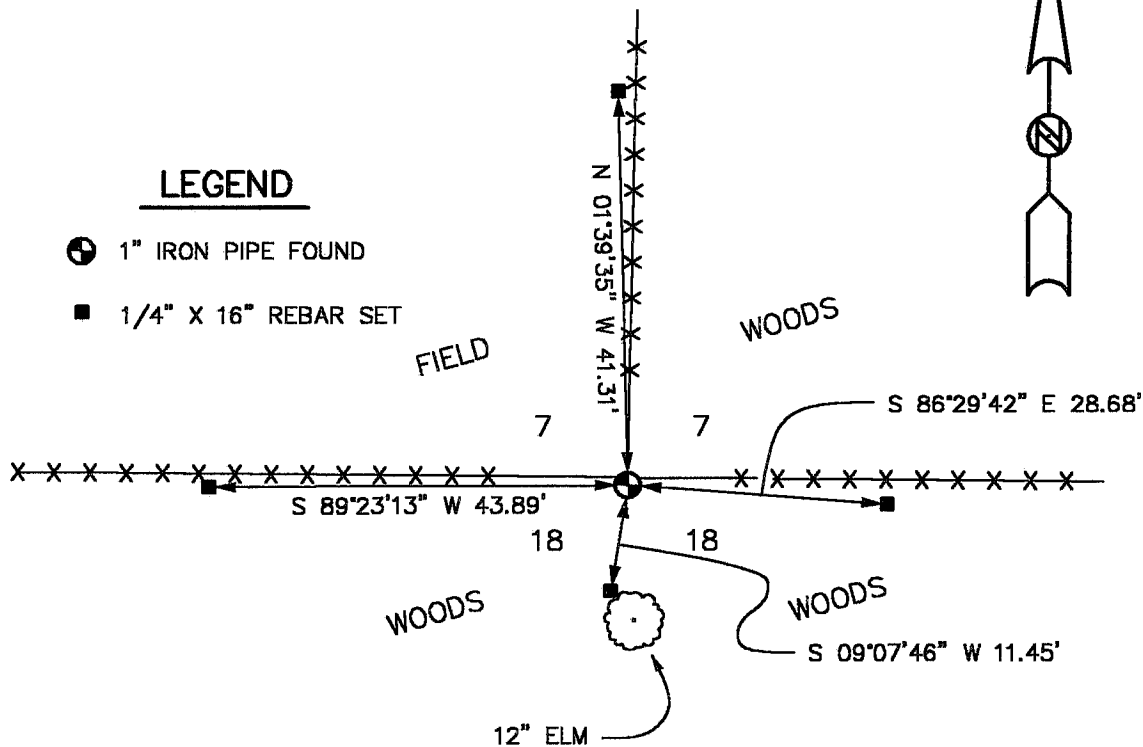
I FOUND A 1" IRON PIPE AT AN OCCUPIED FENCE CORNER.
VERIFIED THIS LOCATION USING G.P.S. AND E.D.M. METHODS.

DESCRIPTION OF CORNER AND WITNESS MONUMENTS, REFERENCES AND ACCESSORIES USED TO PERPETUATE THE ORIGINAL OR RE-ESTABLISHED LOCATION OF THIS CORNER:

WITNESS TO THE CORNER LOCATION:

BOBBY SEDGWICK
SHELBY BLINDERT

SKETCH:



LEGEND

- 1" IRON PIPE FOUND
- 1/4" X 16" REBAR SET

NOT TO SCALE

C:\EPSA\PROGRAM\TIE\T5NR2W\18N