

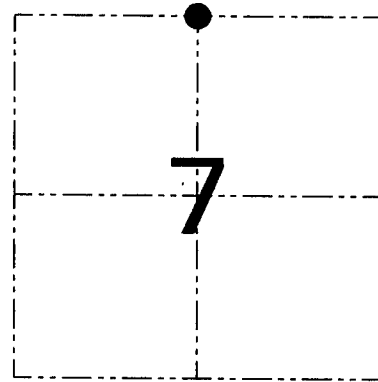
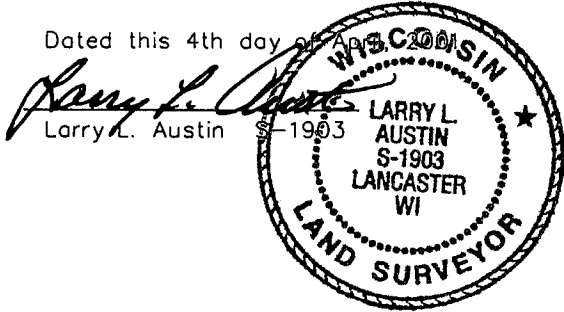
U.S. PUBLIC LAND SURVEY MONUMENT RECORD - GRANT COUNTY, WI

Section 7, Town 5 North Range 2 West, Town of Liberty

CERTIFICATE

I, Larry L. Austin, do hereby certify that the corner location on this record was determined by me and/or under my direct supervision and that this U.S. public land survey monument record is correct and complete to the best of my knowledge and belief.

Dated this 4th day of April, 2001



● = CORNER LOCATION

HISTORY OF CORNER ESTABLISHMENT

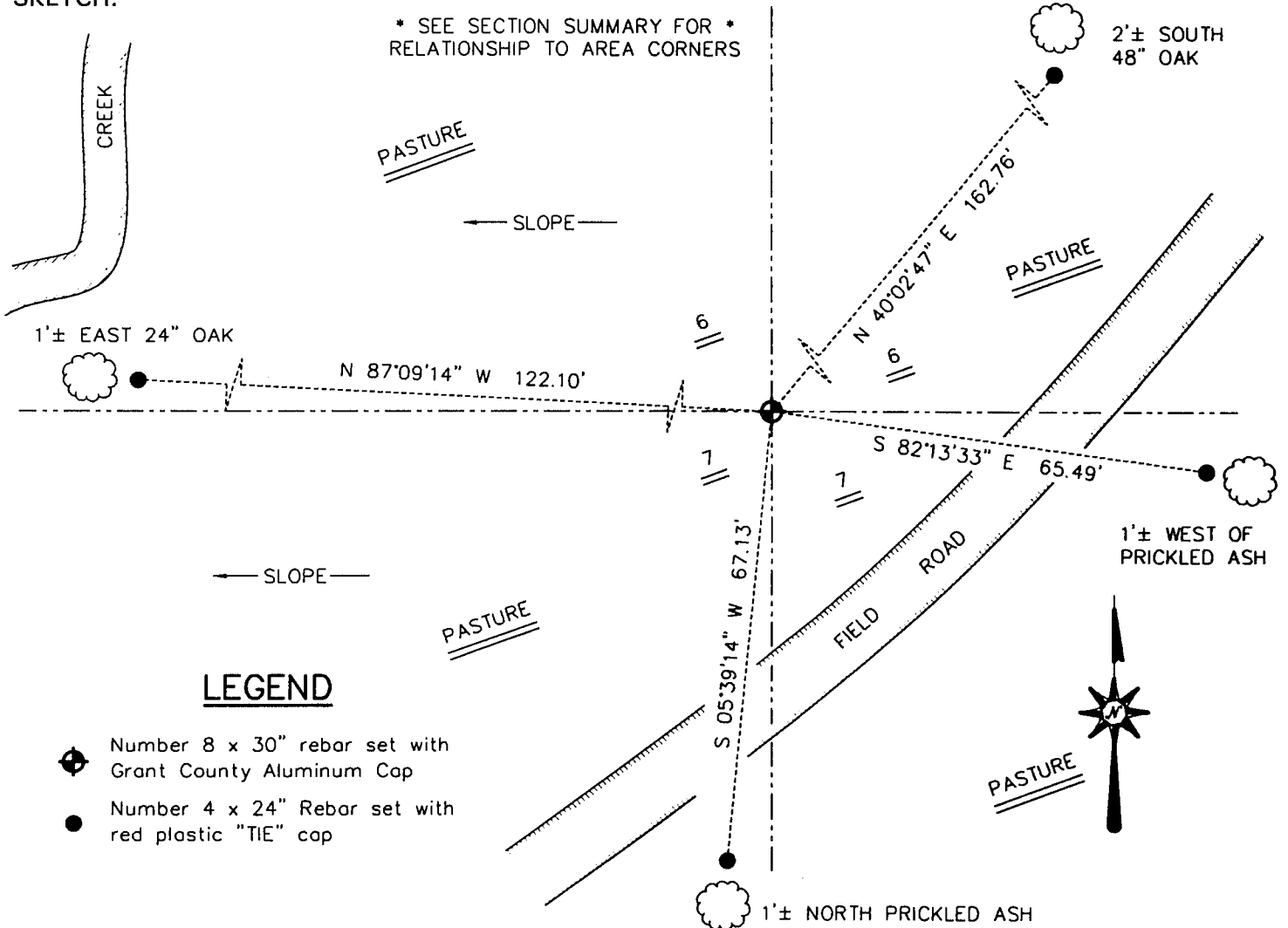
Corner was originally set in 1832 by Harvey Parke.
No other record of the corner was found.

DESCRIPTION OF CORNER EVIDENCE FOUND

I reset the corner proportionately between the Northeast corner and the occupied corner along the town line. Verified this location using EDM & GPS methods.

DESCRIPTION OF CORNER AND WITNESS MONUMENTS, references and accessories used to perpetuate the original or re-established location of this corner. Witnesses to the corner location Bobby Sedgwick & Shelby Blindert & Tim Fauver.

SKETCH:



AUSTIN ENGINEERING, LLC

4211 HWY 81 EAST, LANCASTER, WI 53813
PHONE 608-723-6363 FAX 608-723-6702

FIELDBOOK: SDR33, 2101
G: \T5NR2W\09
C: \SWA\TIE\T5NR2W\32
CREW: BS-SB-SA-TF

DRAWN BY: SW AUSTIN
APPROVED: LL AUSTIN

CORNER NUMBER 32

JUN 14 2001