

GRANT COUNTY

Survey Monument Record

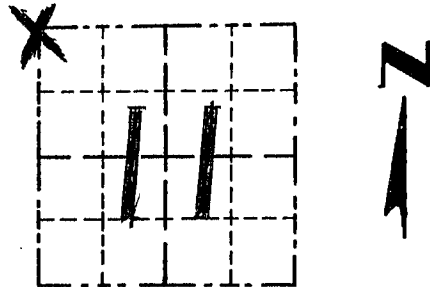
TYPE OF MONUMENT COUNTY MONUMENT
 STATE PLANE COORDINATES: N _____
 E _____
 ELEVATION — M.S.L. DATUM: _____
 THETA ANGLE: _____
 FIELD BOOK: 9504
 PAGE 25

CORNER NO. 25
 SECTION 11
 TOWN 5N
 RANGE ZW
NW COR.

BASIS FOR MONUMENT LOCATION

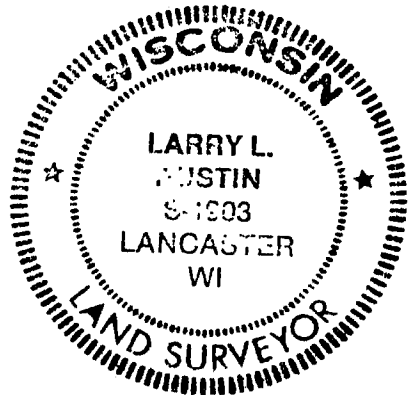
(Use reverse side if necessary)

Show info such as: History of corner, with reference to Vol. and pg., dates, surveyor; exact description of monument replaced; if location computed, by taped or EDM traverse; landowner, remarks, etc.



LOCATION
(Indicated by "X")

SEAL:



- ORIGINAL CORNER SET IN 1832 BY PARKE

- NO RECORD OF THE CORNER FOUND SINCE ORIGINAL SURVEYS E-W LOCATION BASED ON OCCUPATIONAL EVIDENCE; N-S LOCATION SET EQUIDISTANT TO OCCUPATION AT W¹/₄ CORNER OF SEC. 2 & W¹/₄ CORNER OF SEC. 11. THIS LOCATION VERIFIED BY EDM TRAVERSE OF THE AREA.

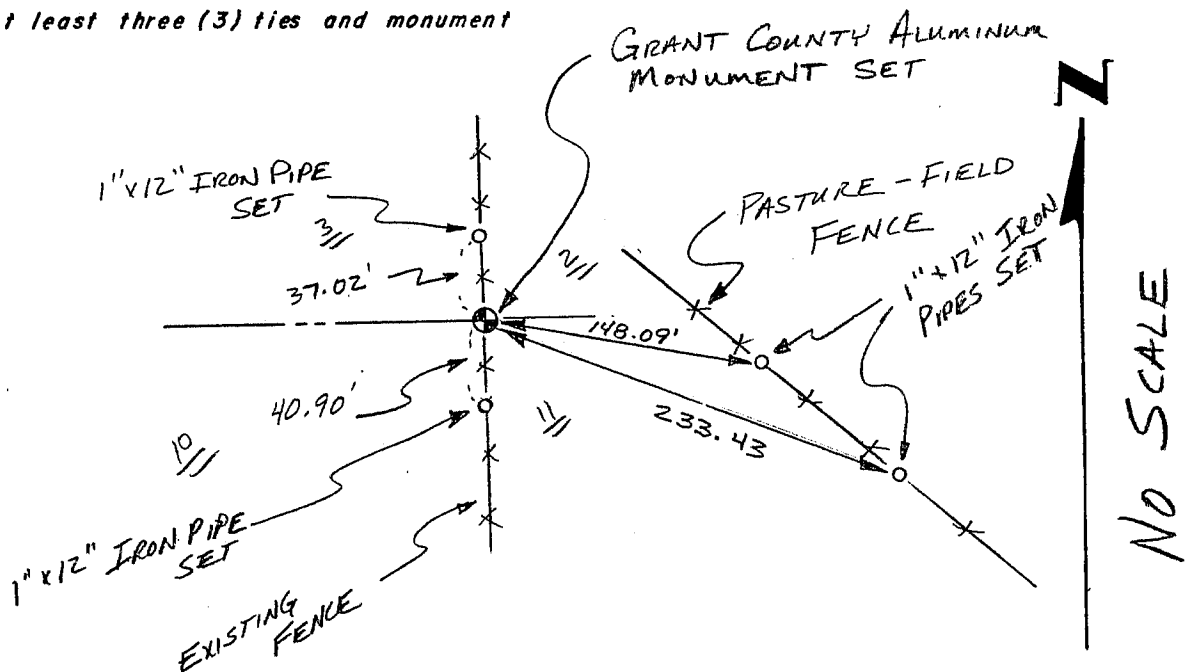
CERTIFIED CORRECT

Larry L. Austin
 Registered Land Surveyor

DATE: _____

TIE SKETCH

Show at least three (3) ties and monument



NO SCALE