

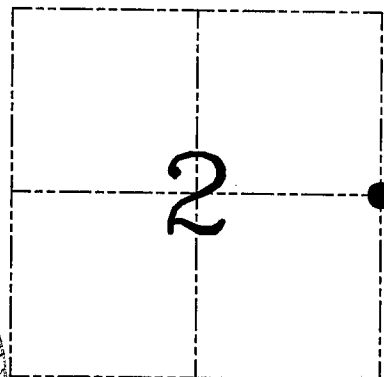
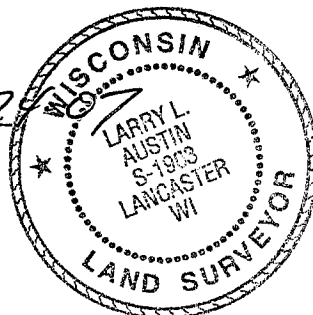
**U.S. PUBLIC LAND SURVEY MONUMENT RECORD – GRANT COUNTY, WI**

**Section 2, Town 5 North Range 2 West, Town of Liberty**

CERTIFICATE

I, Larry L. Austin, do hereby certify that the corner location on this record was determined by me and/or under my direct supervision and that this U.S. public land survey monument record is correct and complete to the best of my knowledge and belief.

*Larry L. Austin 2-2-07*  
 Larry L. Austin, S-1903                      date



● = CORNER LOCATION

HISTORY OF CORNER ESTABLISHMENT

Corner was originally set in 1832 by Sibley. In 1890 Herbert Gould tied to the corner. In 2000 I set and tied the corner. No other record of the corner was found.

DESCRIPTION OF CORNER EVIDENCE FOUND

I was unable to locate the monument due to bulldozing. I used two existing ties to reset the monument as shown below. Verified this location using EDM & GPS methods.

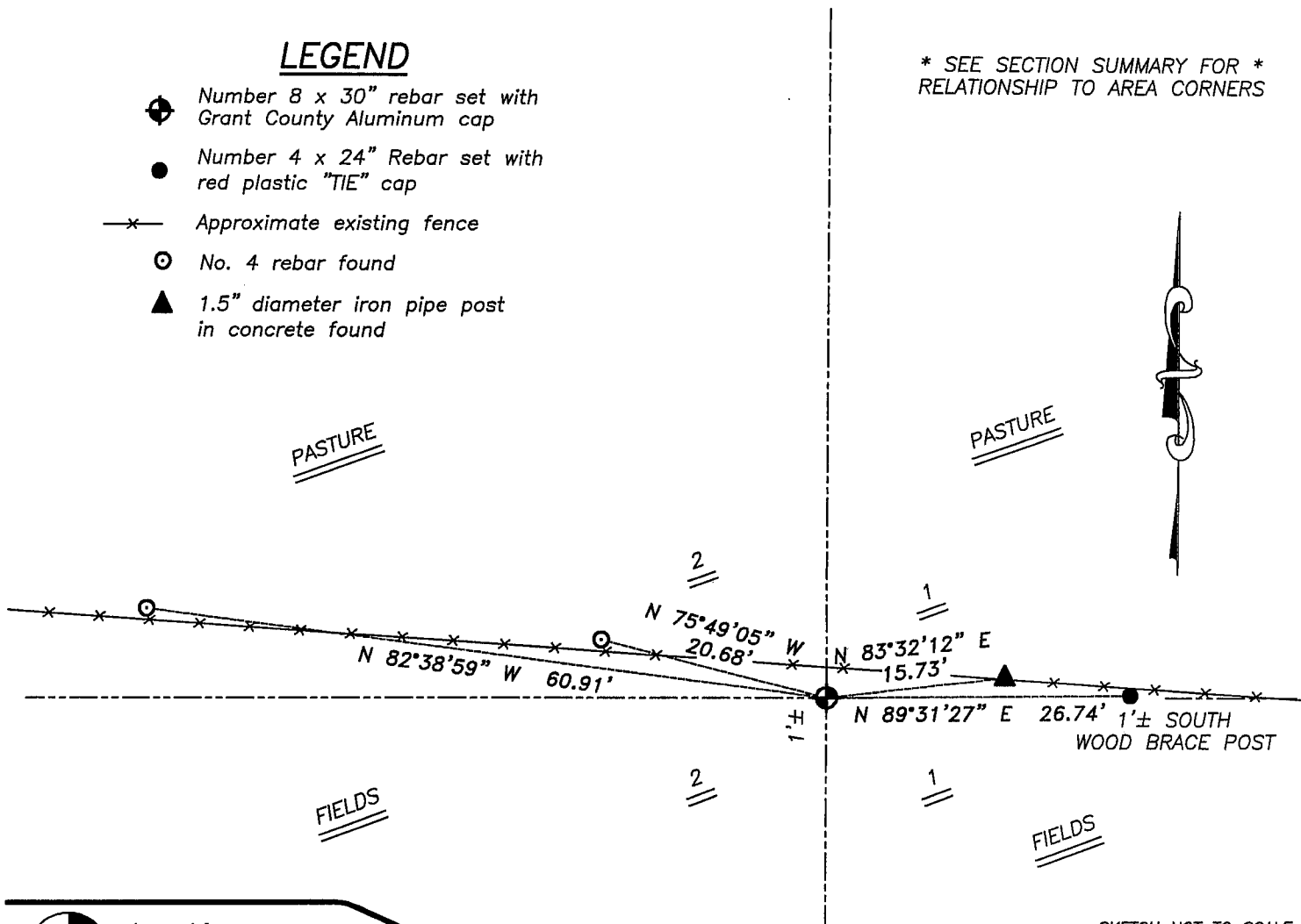
DESCRIPTION OF CORNER AND WITNESS MONUMENTS, references and accessories used to perpetuate the original or re-established location of this corner. Witnesses to corner location Bobby Sedgwick & Brad Digman & Shelby Blindert

**SKETCH:**

LEGEND

- Number 8 x 30" rebar set with Grant County Aluminum cap
- Number 4 x 24" Rebar set with red plastic "TIE" cap
- x— Approximate existing fence
- ⊙ No. 4 rebar found
- ▲ 1.5" diameter iron pipe post in concrete found

\* SEE SECTION SUMMARY FOR \*  
 RELATIONSHIP TO AREA CORNERS



SKETCH NOT TO SCALE



**Austin Engineering LLC**

4211 HWY 81 E, LANCASTER, WI 53813  
 PHONE 608-723-6363 FAX 608-723-6702

JOB NUMBER 06S156  
 FIELDBOOK: TDSR, 2607  
 G:\T5NR2W\02  
 H:\TIE\T5NR2W\19

DRAWN BY: SW AUSTIN  
 APPROVED: LL AUSTIN

# GRANT COUNTY CERTIFIED LAND CORNER

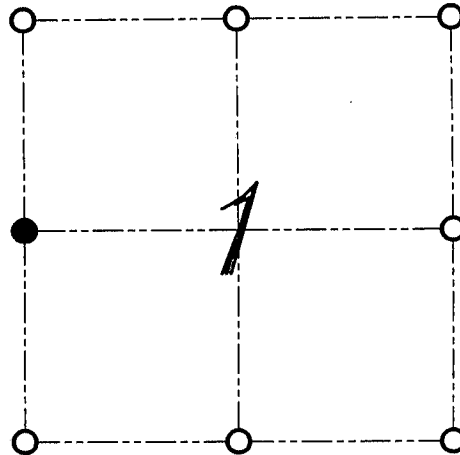
CORNER NUMBER 19

**CERTIFICATE:**

I, Larry L. Austin, do hereby certify that on the 22nd day of December, 1999, I found evidence of the West 1/4 corner of Section 01, Town 5 North, Range 2 West, of the Fourth Principal Meridian, and I re-established said corner according to the Wisconsin Statutes as shown and described hereon.

DATED THIS 17th DAY OF JANUARY, 2000

*Larry L. Austin*  
Larry L. Austin S-1903



● = CORNER LOCATION  
**WEST 1/4 CORNER OF  
SECTION 01, T 5 N R 2 W  
TOWN OF LIBERTY**

**HISTORY OF ORIGINAL CORNER ESTABLISHMENT:**

Corner was set in 1832 by Sibley.  
Corner was tied to in 1890 by Herbert Goold.  
Goold found a stone set by a previous surveyor.

**DESCRIPTION OF CORNER EVIDENCE FOUND:**

I found no evidence to the location of the stone.  
I reset the corner based on a traverse of the whole section.  
Verified this location using E.D.M. and G.P.S. methods.

**DESCRIPTION OF CORNER AND WITNESS MONUMENTS, REFERENCES AND ACCESSORIES USED TO PERPETUATE THE ORIGINAL OR RE-ESTABLISHED LOCATION OF THIS CORNER:**  
WITNESS TO THE CORNER LOCATION: BOBBY SEDGWICK ; SHELBY BLINDERT

**SKETCH:**

