

GRANT COUNTY CERTIFIED LAND CORNER

CERTIFICATE:

I, Larry L. Austin, do hereby certify that on the 22nd day of December, 1999, I found no evidence of the East 1/4 corner of Section 01, Town 5 North, Range 2 West, of the Fourth Principal Meridian, and I re-established said corner according to the Wisconsin Statutes as shown and described heron.

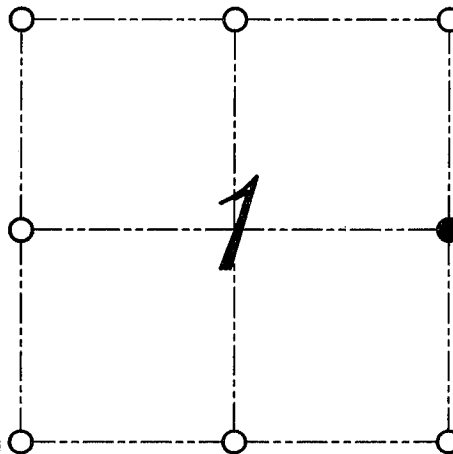
DATED THIS 17th DAY OF JANUARY, 2000

Larry L. Austin
Larry L. Austin S-1903



SEAL

CORNER NUMBER 20



● = CORNER LOCATION
EAST 1/4 CORNER OF
SECTION 01, T 5 N R 2 W
TOWN OF LIBERTY

HISTORY OF ORIGINAL CORNER ESTABLISHMENT:

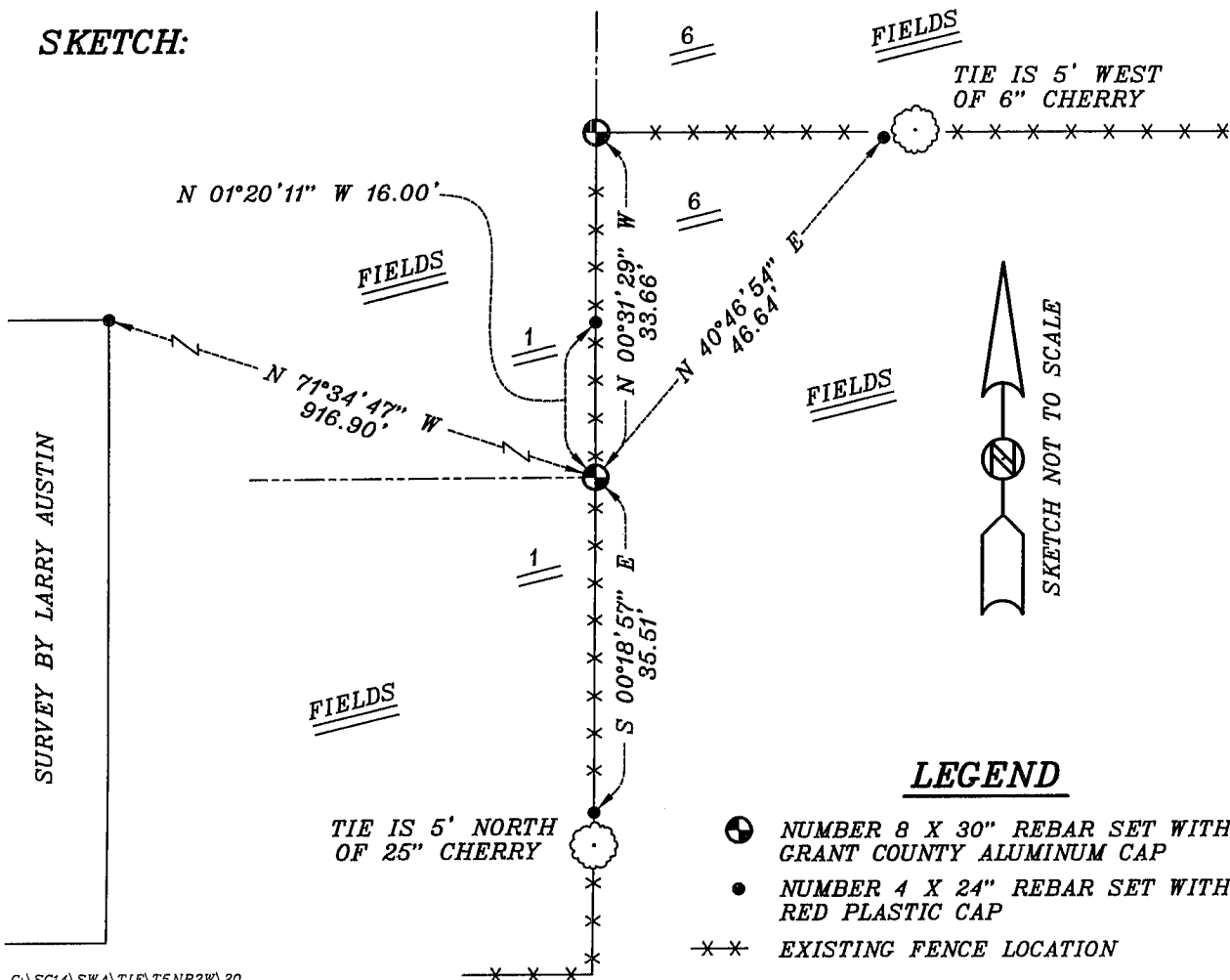
Corner was set in 1832 by Sibley.
Corner was tied to in 1890 by Herbert Goold.
No mention of monument on survey.

DESCRIPTION OF CORNER EVIDENCE FOUND:

I found no evidence of the location of the corner.
I reset the corner at the proportioned offset from the West 1/4 corner of Section 06.
I accepted this location after an E.D.M. and G.P.S. traverse of the area.

DESCRIPTION OF CORNER AND WITNESS MONUMENTS, REFERENCES AND ACCESSORIES USED TO PERPETUATE THE ORIGINAL OR RE-ESTABLISHED LOCATION OF THIS CORNER:
WITNESS TO THE CORNER LOCATION: BOBBY SEDGWICK ; SHELBY BLINDERT

SKETCH:



LEGEND

- NUMBER 8 X 30" REBAR SET WITH GRANT COUNTY ALUMINUM CAP
- NUMBER 4 X 24" REBAR SET WITH RED PLASTIC CAP
- xx EXISTING FENCE LOCATION

GRANT COUNTY CERTIFIED LAND CORNER

CERTIFICATE:

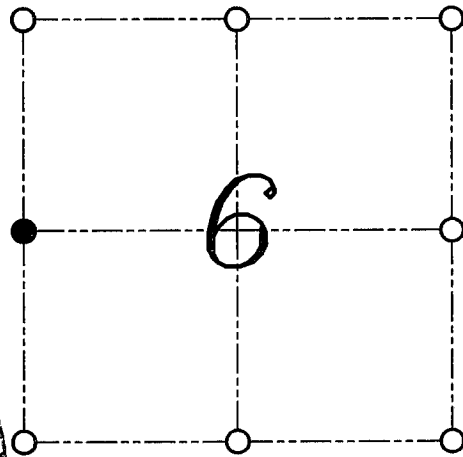
I, Larry L. Austin, do hereby certify that on the 22nd day of December, 1999, I found evidence of the West 1/4 corner of Section 06, Town 5 North, Range 1 West, of the Fourth Principal Meridian, and I re-established said corner according to the Wisconsin Statutes as shown and described hereon.

DATED THIS 17th DAY OF JANUARY, 2000

Larry L. Austin
Larry L. Austin S-1903



CORNER NUMBER 14



● = CORNER LOCATION
WEST 1/4 CORNER OF
SECTION 06, T 5 N R 1 W
TOWN OF CLIFTON

HISTORY OF ORIGINAL CORNER ESTABLISHMENT:

Corner was never originally set.
In 1946 Geo Stuntz tied to the corner.

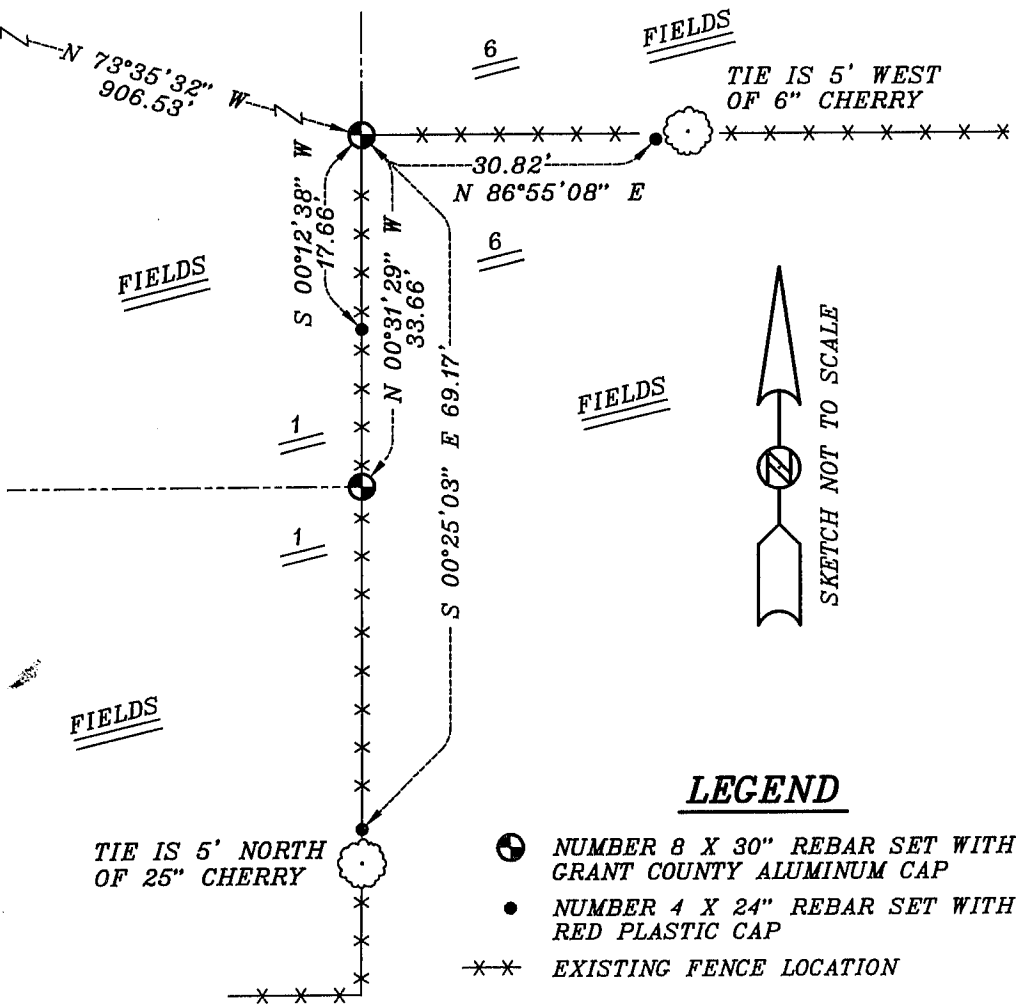
DESCRIPTION OF CORNER EVIDENCE FOUND:

I found a nail at an existing fence corner and accepted it's location after an E.D.M. and G.P.S. traverse of the area.

DESCRIPTION OF CORNER AND WITNESS MONUMENTS, REFERENCES AND ACCESSORIES USED TO PERPETUATE THE ORIGINAL OR RE-ESTABLISHED LOCATION OF THIS CORNER:
WITNESS TO THE CORNER LOCATION: BOBBY SEDGWICK ; SHELBY BLINDERT

SKETCH:

SURVEY BY LARRY AUSTIN



TIE IS 5' NORTH OF 25" CHERRY

LEGEND

- NUMBER 8 X 30" REBAR SET WITH GRANT COUNTY ALUMINUM CAP
- NUMBER 4 X 24" REBAR SET WITH RED PLASTIC CAP
- **-** EXISTING FENCE LOCATION