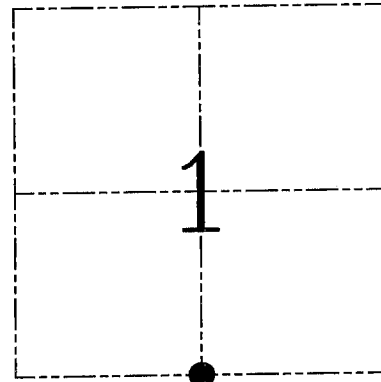
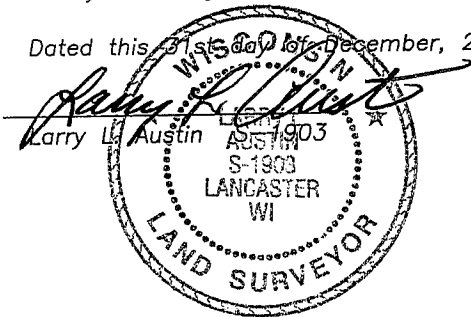


**U.S. PUBLIC LAND SURVEY MONUMENT RECORD – GRANT COUNTY, WI**  
**Section 1, Town 5 North Range 2 West, Town of Liberty**

CERTIFICATE

I, Larry L. Austin, do hereby certify that the corner location on this record was determined by me and/or under my direct supervision and that this U.S. public land survey monument record is correct and complete to the best of my knowledge and belief.

Dated this 31<sup>st</sup> day of December, 2004



● = CORNER LOCATION

HISTORY OF CORNER ESTABLISHMENT

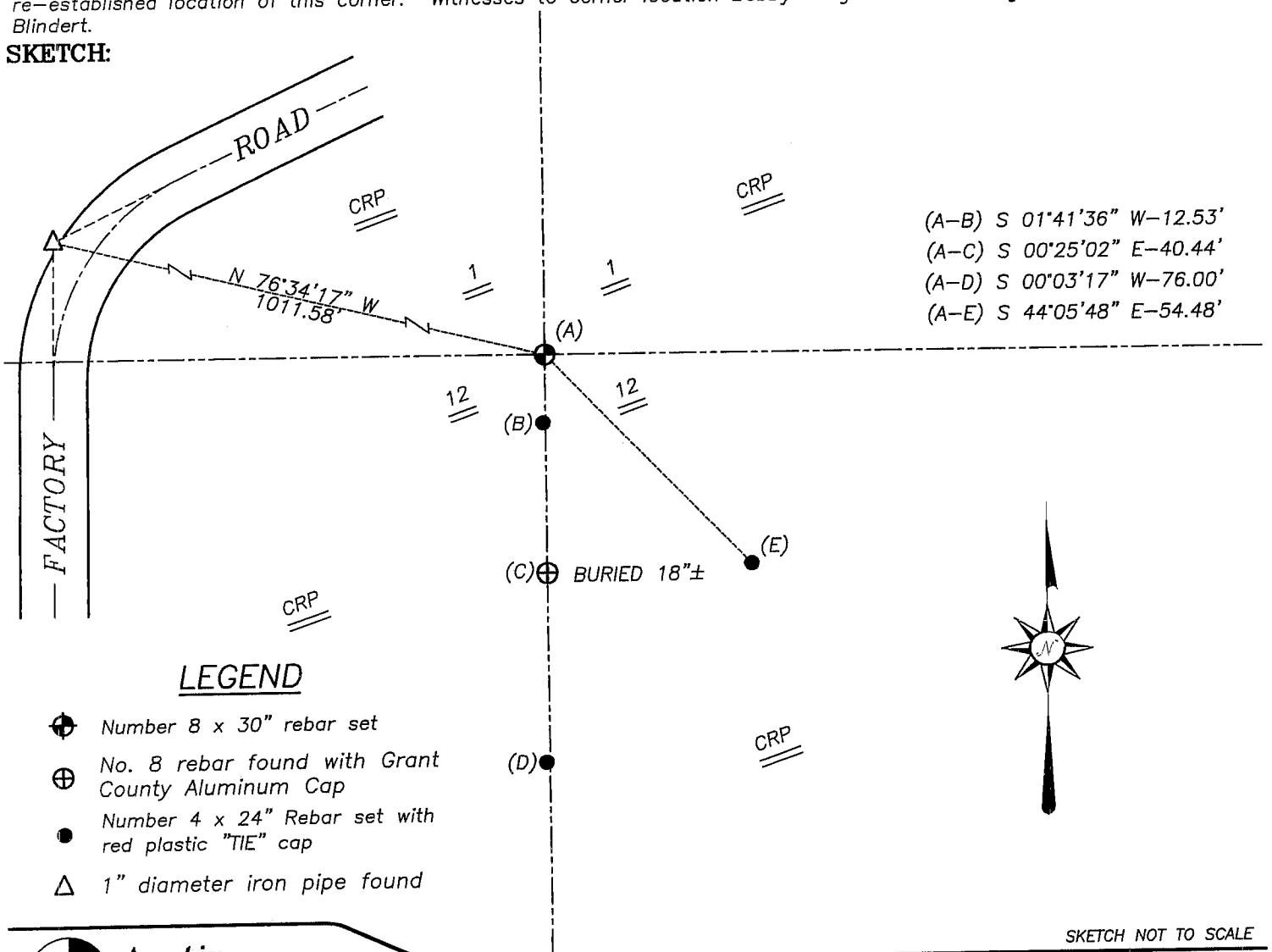
Corner was originally set in 1832 by Sibley. Gould tied to the corner in 1890. Gould set the corner equidistant between the Southwest and Southeast corners of the section. I set the corner in 2000 equidistant between the Southwest and Southeast corners.

DESCRIPTION OF CORNER EVIDENCE FOUND

I found an existing fence running East–West; West of Factory Road. I projected this fence East and intersected the existing North–South Quarter line. Verified this location using EDM & GPS methods.

DESCRIPTION OF CORNER AND WITNESS MONUMENTS, references and accessories used to perpetuate the original or re-established location of this corner. Witnesses to corner location Bobby Sedgwick & Brad Digman & Shelby Blindert.

**SKETCH:**



SKETCH NOT TO SCALE

**Austin Engineering LLC**  
 4211 HWY 81 E, LANCASTER, WI 53813  
 PHONE 608-723-6363 FAX 608-723-6702

JOB NUMBER: 04s266  
 FIELDBOOK: TDSR, 2420  
 G:\T5NR2W\11  
 H:\TIE\T5NR2W\22new

DRAWN BY: BJ HAZEN  
 APPROVED: LL AUSTIN

# GRANT COUNTY CERTIFIED LAND CORNER

CORNER NUMBER 22

**CERTIFICATE:**

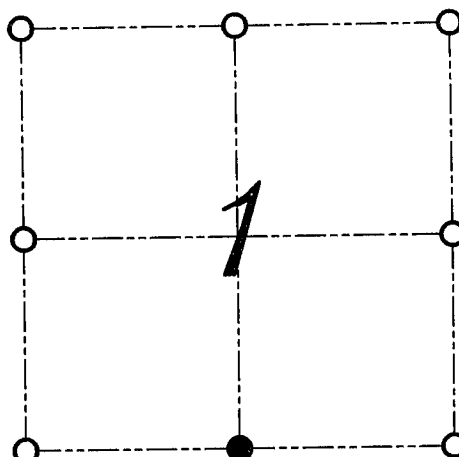
I, Larry L. Austin, do hereby certify that on the Twenty-second day of December, 1999, I found no evidence of the South 1/4 corner of Section 1, Town 5 North, Range 2 West, of the Fourth Principal Meridian, and I re-established said corner according to the Wisconsin Statutes as shown and described heron.

DATED THIS THIRD DAY OF JANUARY, 2000

*Larry L. Austin*  
Larry L. Austin S-1903



SEAL



● = CORNER LOCATION

**SOUTH 1/4 CORNER OF  
SECTION 1, T 5 N R 2 W  
TOWN OF LIBERTY**

**HISTORY OF ORIGINAL CORNER ESTABLISHMENT:**

Corner was set in 1832 by Sibley. Herbert Goold tied to the corner in 1890. Goold set the corner equidistant between the Southwest and Southeast corners.

**DESCRIPTION OF CORNER EVIDENCE FOUND:**

I found no evidence of the location of the corner due to the heavy cultivation. I reset the corner equidistant between the Southwest and Southeast corners. Verified this location using E.D.M. and G.P.S. methods.

**DESCRIPTION OF CORNER AND WITNESS MONUMENTS, REFERENCES AND ACCESSORIES USED TO PERPETUATE THE ORIGINAL OR RE-ESTABLISHED LOCATION OF THIS CORNER:**  
WITNESS TO THE CORNER LOCATION: BOBBY SEDGWICK ; SHELBY BLINDERT

**SKETCH:**

