

U.S. PUBLIC LAND SURVEY MONUMENT RECORD - GRANT COUNTY, WI

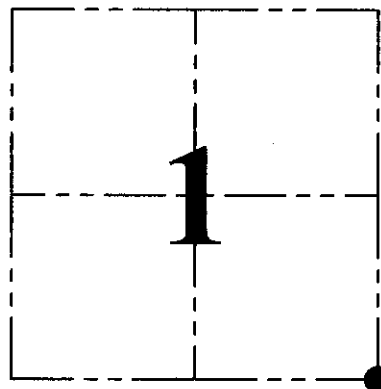
Section 1, Town 5 North Range 2 West, Town of Liberty

CERTIFICATE:

I, Aaron J. Austin, Wisconsin Professional Land Surveyor, do hereby certify that the corner location on this record was determined by me and/or under my direct supervision and that this U.S. Public Land Survey Monument Record is correct and complete to the best of my knowledge and belief.

Dated this 10th day of September, 2015.

Aaron J. Austin, S-2922
LANCASTER, WI
PROFESSIONAL LAND SURVEYOR



● = CORNER LOCATION

HISTORY OF CORNER ESTABLISHMENT:

1832-Henry Parke set original corner.
1890-Herbert Gould tied to the corner on a Survey in Book D, Page 183.
2000-Larry Austin reset the corner and prepared a Grant County Certified Land Corner record. No other record was found for this corner.

DESCRIPTION OF CORNER EVIDENCE FOUND:

I reset this corner based upon on an existing tie found and notes provided by Larry Austin to measurements of other area corners. I set 4 witness corners and verified this locaiton with G.P.S. and E.D.M. methods.

DESCRIPTION OF CORNER AND WITNESS MONUMENTS, references and accessories used to perpetuate the original or re-established location of this corner. Witnesses to corner location Shane Austin.

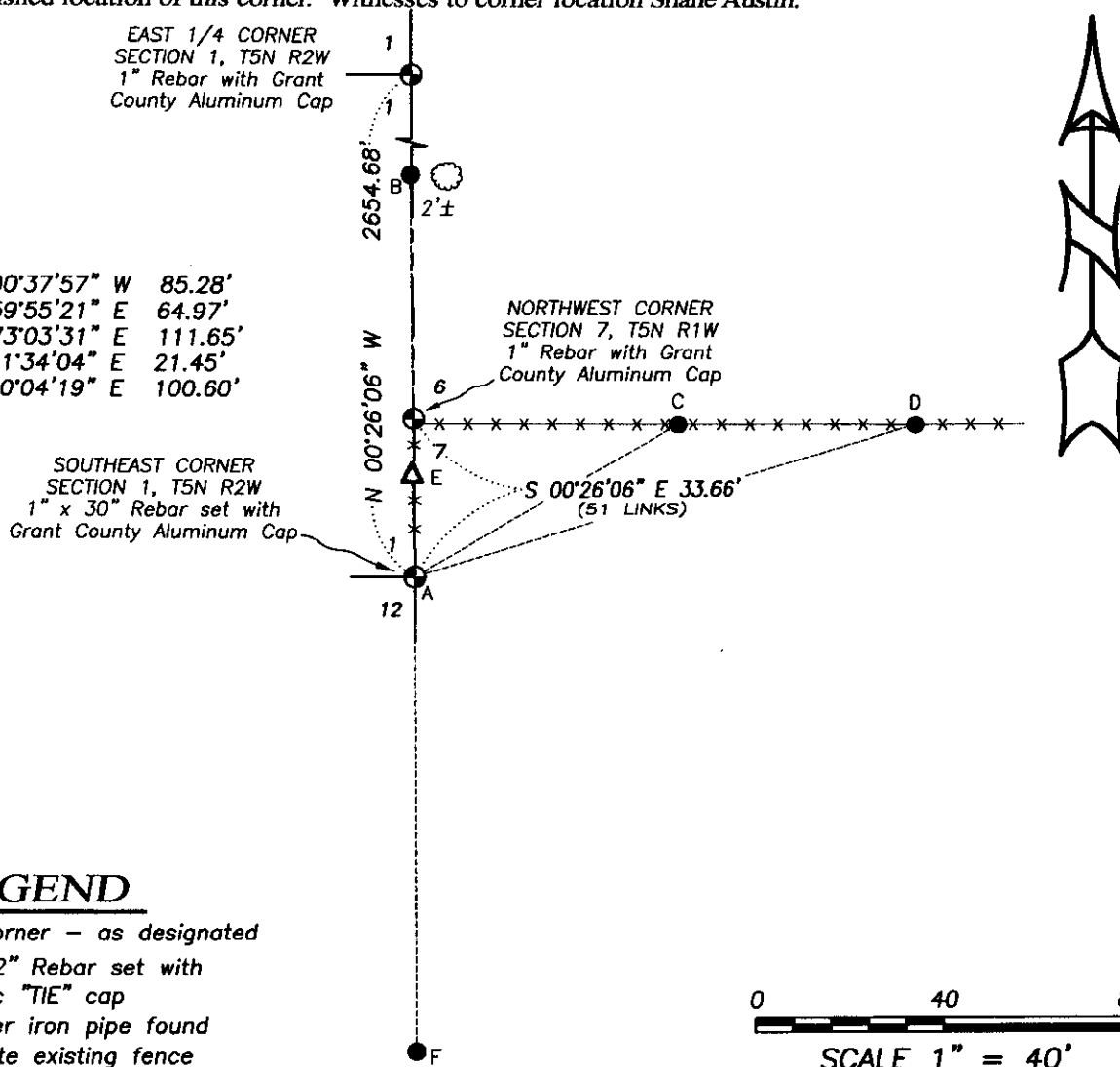
SKETCH:

EAST 1/4 CORNER
SECTION 1, T5N R2W
1" Rebar with Grant
County Aluminum Cap

A-B=N 00°37'57" W 85.28'
A-C=N 59°55'21" E 64.97'
A-D=N 73°03'31" E 111.65'
A-E=S 01°34'04" E 21.45'
A-F=S 00°04'19" E 100.60'

SOUTHEAST CORNER
SECTION 1, T5N R2W
1" x 30" Rebar set with
Grant County Aluminum Cap

NORTHWEST CORNER
SECTION 7, T5N R1W
1" Rebar with Grant
County Aluminum Cap



LEGEND

- ⊙ Section Corner - as designated
- 1/2" x 12" Rebar set with red plastic "TIE" cap
- △ 1" diameter iron pipe found
- x-x- Approximate existing fence

0 40 80
SCALE 1" = 40'



Austin
Engineering LLC
austinengineeringllc.com

4211 HWY 81 E, LANCASTER, WI 53813
PHONE: 608-723-6363 FAX: 608-723-6702

JOB NO: 15s179
H:\CRD\15s179
H:\TIE\T5NR2W\21(A)

FIELDBOOK: TDSR
DRAWN BY: AJ AUSTIN
CREW: SW AUSTIN

GRANT COUNTY CERTIFIED LAND CORNER

CORNER NUMBER 21

CERTIFICATE:

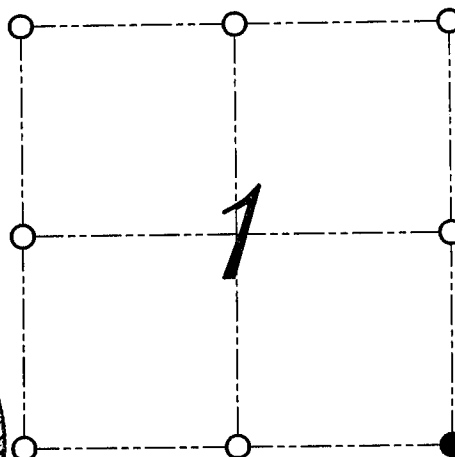
I, Larry L. Austin, do hereby certify that on the Twenty-second day of December, 1999, I found evidence of the Southeast corner of Section 1, Town 5 North, Range 2 West, of the Fourth Principal Meridian, and I re-established said corner according to the Wisconsin Statutes as shown and described heron.

DATED THIS THIRD DAY OF JANUARY, 2000

Larry L. Austin
Larry L. Austin S-1903



SEAL



● = CORNER LOCATION

**SOUTHEAST CORNER OF
SECTION 1, T 5 N R 2 W
TOWN OF LIBERTY**

HISTORY OF ORIGINAL CORNER ESTABLISHMENT:

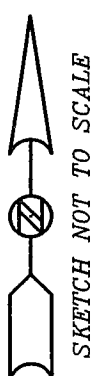
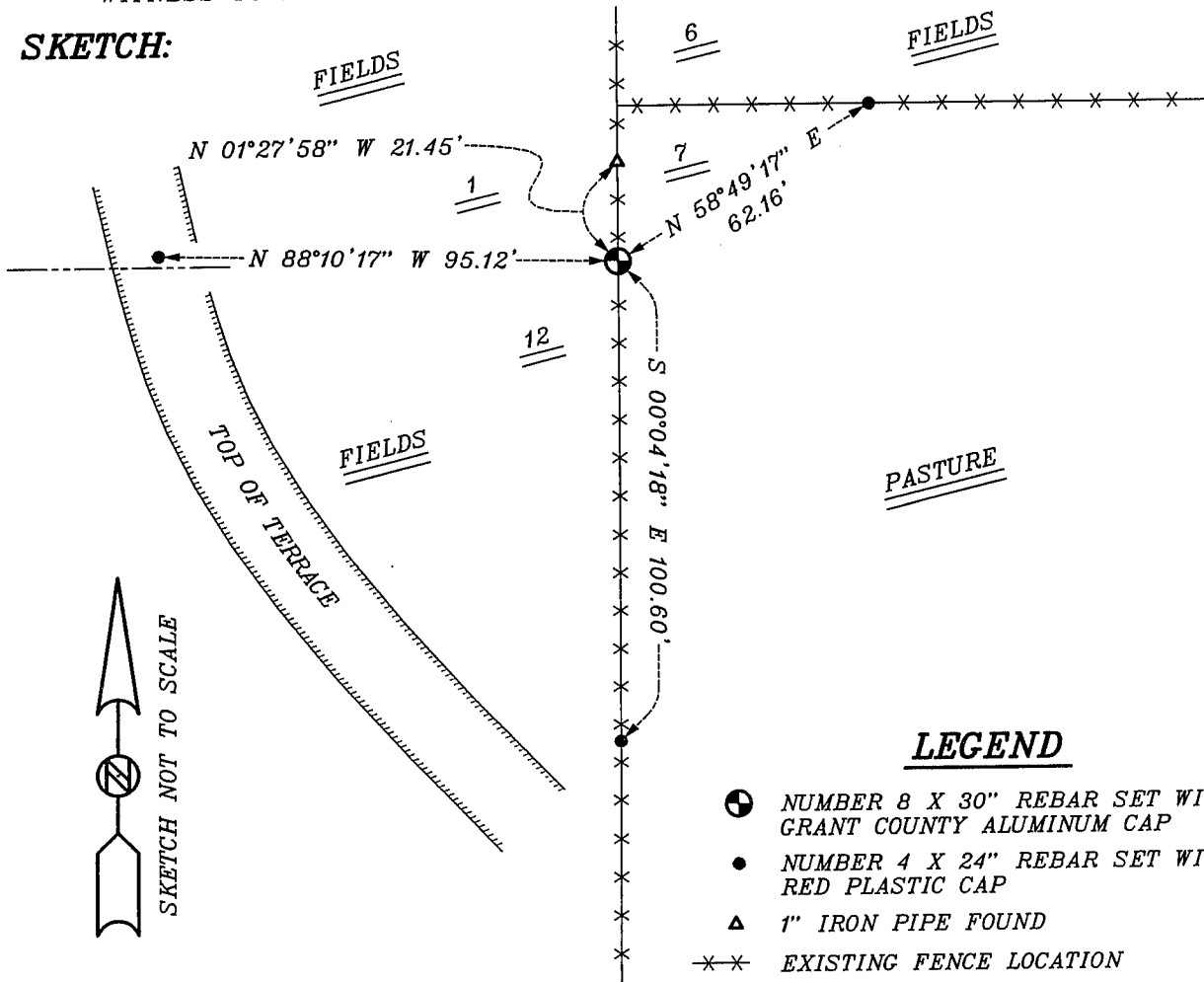
Corner was set in 1832 by Sibley.
Corner was tied to in 1890 by Herbert Goold.
No mention of monument on survey.

DESCRIPTION OF CORNER EVIDENCE FOUND:

I found an existing fence corner at the Northwest corner of Section 07. I reset the Southeast corner of Section 01 at the recorded offset from the fence corner. I accepted this location after an E.D.M. and G.P.S. traverse of the area.

**DESCRIPTION OF CORNER AND WITNESS MONUMENTS, REFERENCES AND ACCESSORIES
USED TO PERPETUATE THE ORIGINAL OR RE-ESTABLISHED LOCATION OF THIS CORNER:**
WITNESS TO THE CORNER LOCATION: BOBBY SEDGWICK ; SHELBY BLINDERT

SKETCH:



LEGEND

- NUMBER 8 X 30" REBAR SET WITH GRANT COUNTY ALUMINUM CAP
- NUMBER 4 X 24" REBAR SET WITH RED PLASTIC CAP
- ▲ 1" IRON PIPE FOUND
- ×× EXISTING FENCE LOCATION