

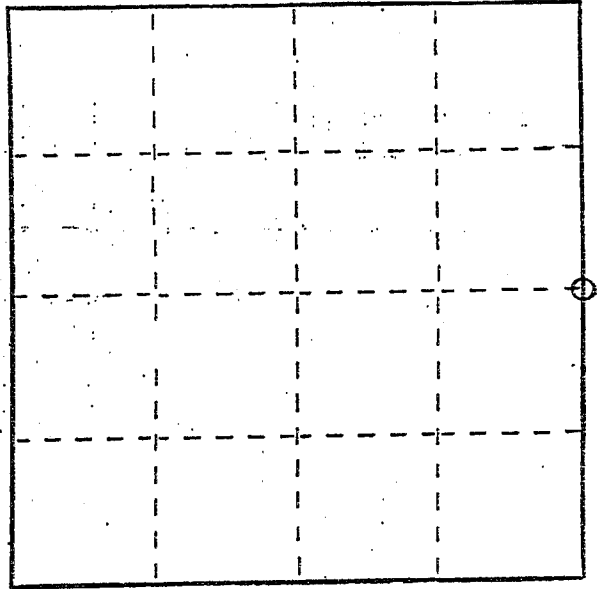
Sec. 36, T. 5 N., R. 1 W.

U. S. PUBLIC LAND SURVEY MONUMENT RECORD

INSTRUCTIONS: This record shall show the location of the corner and shall include all of the following nine elements (a through i).

- (a) Identify the corner by reference to the U.S. public land survey system.
- = Corner monument restored.

SOUTHEAST CORNER OF THE
 NORTHEAST 1/4 OF SECTION
 36, TOWN 5 NORTH,
 RANGE 1 WEST, CLIFTON
 TOWNSHIP, GRANT CO., W.

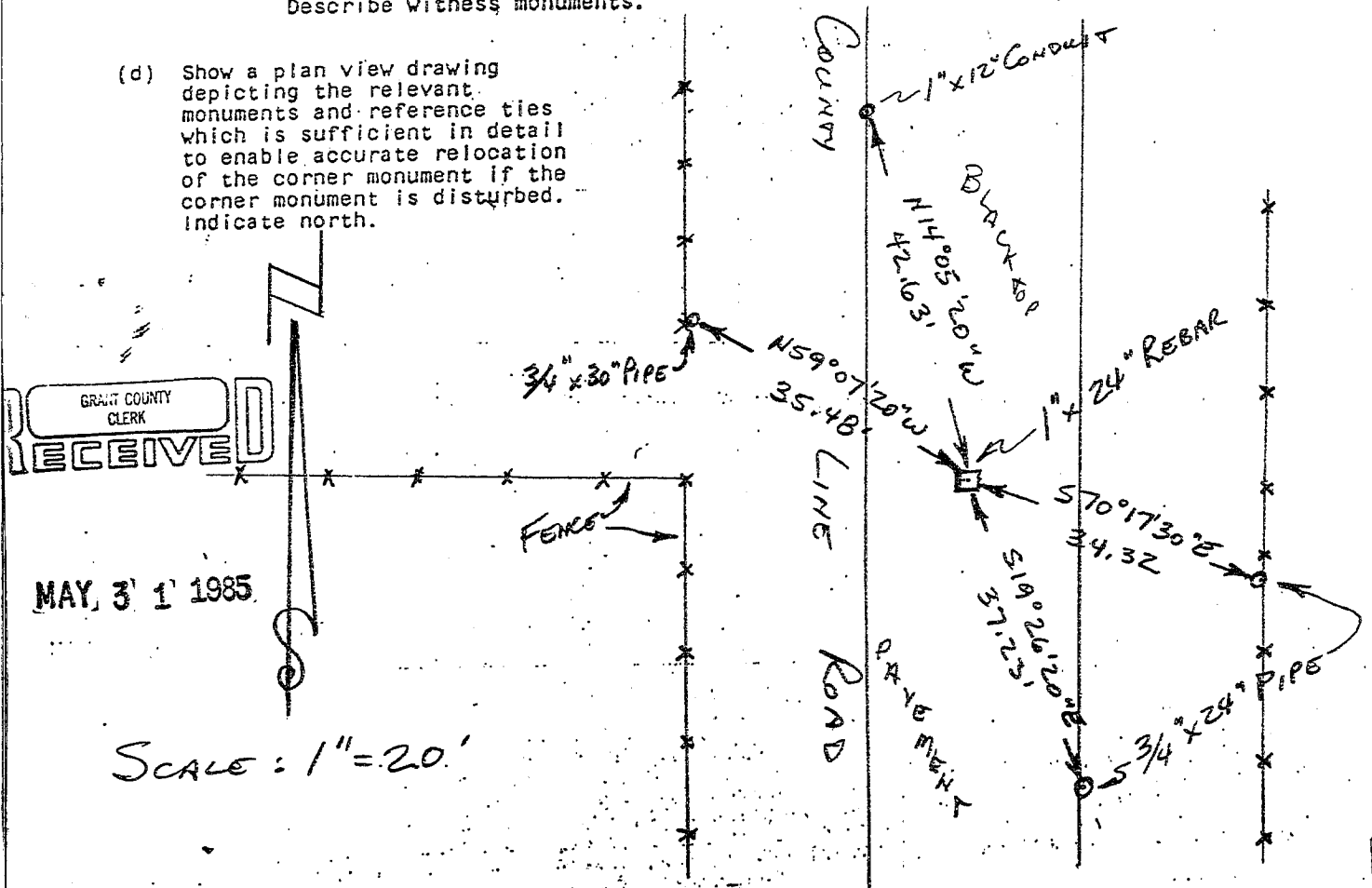


- (b) Describe any record evidence, monument evidence, occupational evidence, testimonial evidence or any other material evidence you considered, and whether the monument was found or placed.

MONUMENT SET AT CENTERLINE OF ROAD
 AND INTERSECTION OF FENCE AFTER LOCATION
 WAS VERIFIED BY AN EDM TRAVERSE OF
 THE AREA.

- (c) In the plan view drawing below, provide reference ties to at least 4 witness monuments, or, if the location is within a municipality, to at least 2 witness monuments. (Witness monuments shall be made of concrete, natural stone, iron or other equally durable material.) Describe witness monuments.

- (d) Show a plan view drawing depicting the relevant monuments and reference ties which is sufficient in detail to enable accurate relocation of the corner monument if the corner monument is disturbed. Indicate north.



GRANT COUNTY CLERK
 RECEIVED

MAY 31 1985

SCALE: 1" = 20'

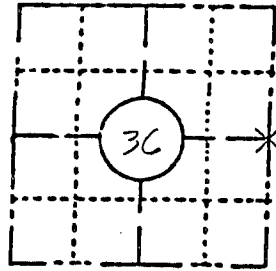
FIELD SURVEY NOTES
PRESERVATION OF LANDMARKS

(Pursuant to Section 59.635(7) Wisconsin Statutes)

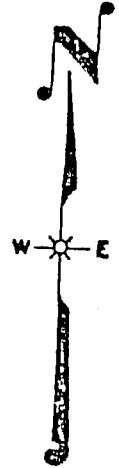
T6N, R1W, SECT 36

Highway Commission of Wisconsin
 Form E-D-707-65

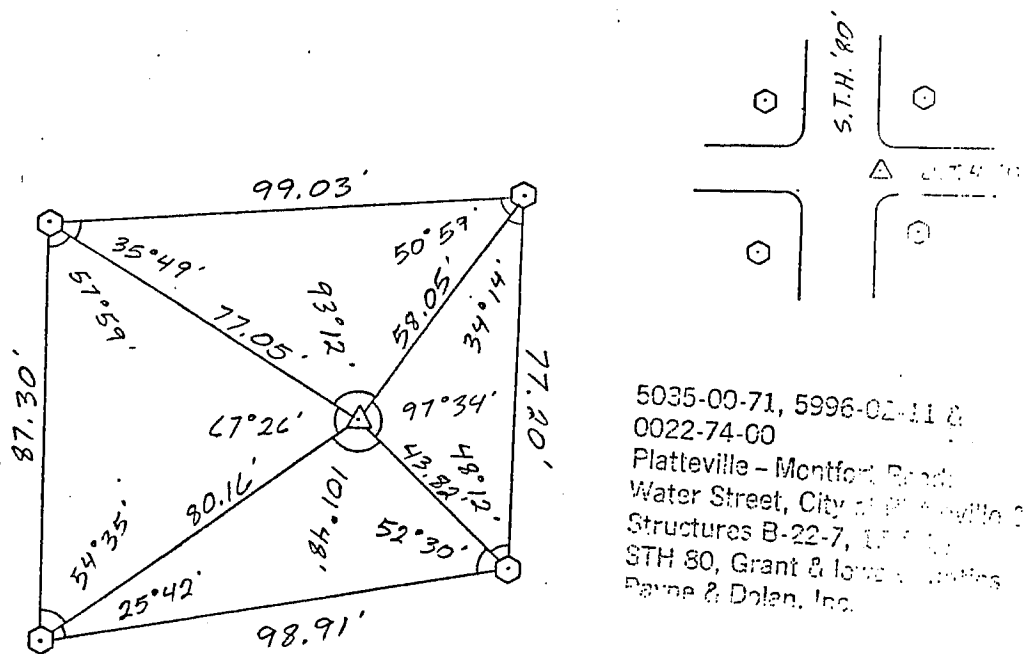
COUNTY GRANT		
TOWN WINGVILLE		
HIGHWAY S.T.H. '80' @ C.T.H. 'B'		
SECTION 36	TOWNSHIP T6N	RANGE R1W
TYPE OF LANDMARK SECTION CORNER MONUMENT		



LOCATION SKETCH
 (Location of landmark indicated by "x")



This space for copy of field notes or ties to the above described landmarks



SCALE
 1" = 40'

- = REFERENCE MONUMENT - ○
- = RIGHT OF WAY POST - □
- = WITNESS POST - ◊
- = SECTION CORNER LOCATION - Δ

COUNTY CLERK'S OFFICE	
COUNTY OF _____ WISCONSIN 55	
DATE RECEIVED FOR RECORD	DATE COPY SENT TO COUNTY SURVEYOR
SIGNATURE OF COUNTY CLERK	

PRESERVATION OF LANDMARKS

PAGE _____