

# GRANT COUNTY CERTIFIED LAND CORNER

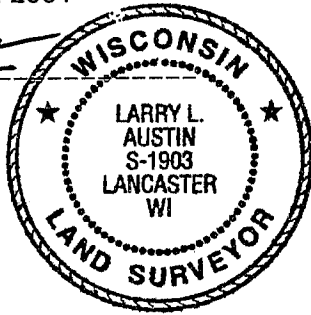
CORNER NUMBER 02

**CERTIFICATE:**

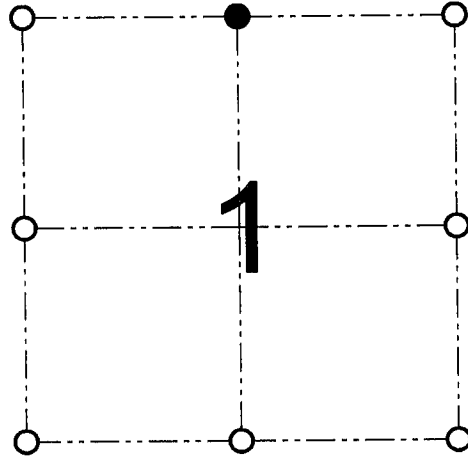
I, Larry L. Austin, do hereby certify that on the 8th day of January, 2001, I found evidence of the North 1/4 corner of Section 1, Town 4 North, Range 1 West, of the 4th Principal Meridian, and I re-established said corner according to the Wisconsin statutes as shown and described hereon.

Dated this 2nd day of February, 2001

*Larry L. Austin*  
Larry L. Austin S-1903



SEAL



● = CORNER LOCATION

NORTH 1/4 CORNER OF  
SECTION 1, T 4 N R 1 W  
TOWN OF LIMA

**HISTORY OF ORIGINAL CORNER ESTABLISHMENT:**

Corner was never originally set. In 1855 Overton tied to what was to be the original corner. In 1981 John Halverson tied to the corner and set a 1" Iron pipe. In 1988 Thomas Buck set the South 1/4 of Section 36.

**DESCRIPTION OF CORNER EVIDENCE FOUND:**

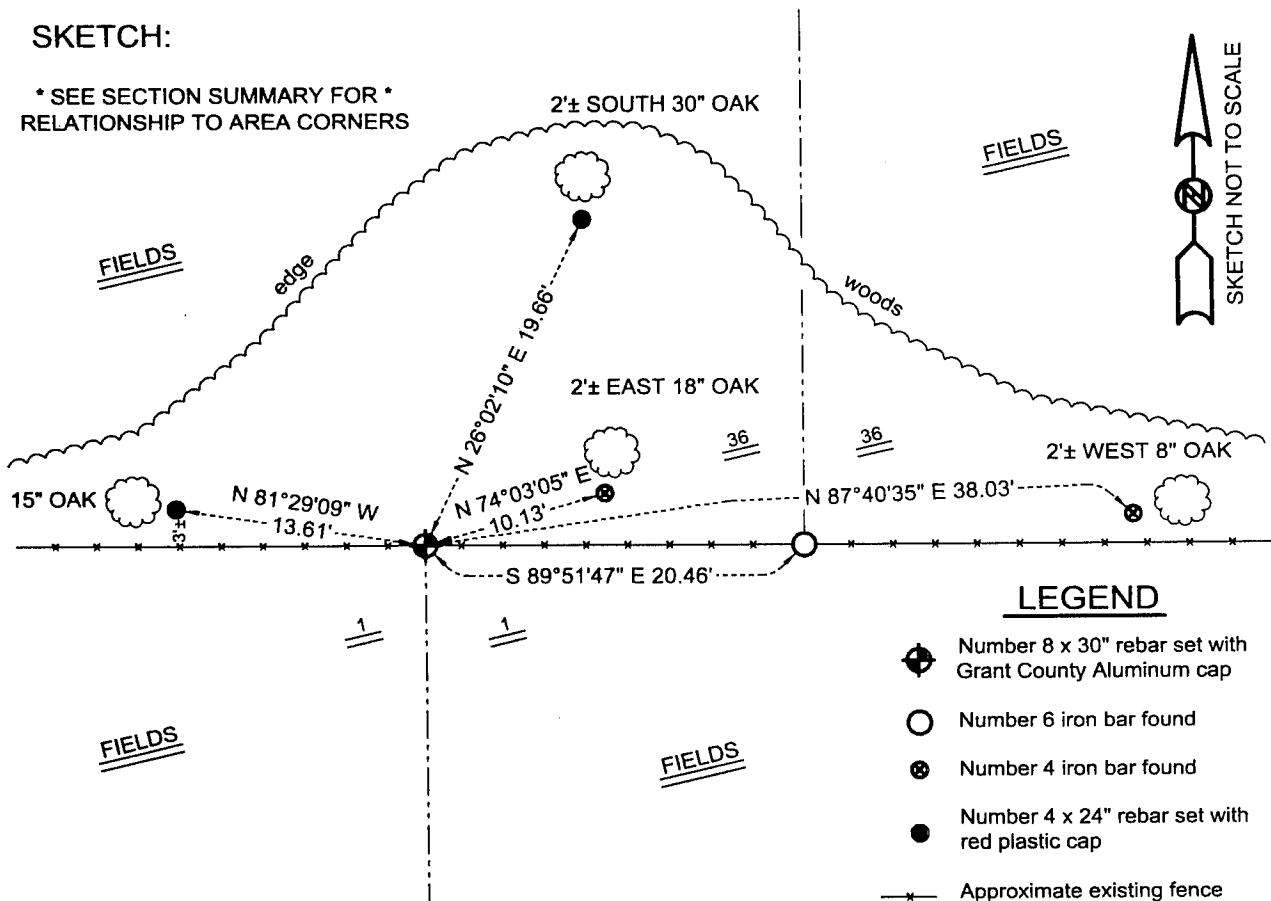
I was unable to locate the 1" Iron pipe set by Halverson. I was able to locate Buck's South 1/4 of Section 36 of T5N R1W. I reset the North 1/4 at the proportioned offset from Buck's corner. Verified this location using EDM & GPS methods.

**DESCRIPTION OF CORNER AND WITNESS MONUMENTS, references and accessories used to perpetuate the original or re-established location of this corner**

WITNESS TO THE CORNER LOCATION: SHANE AUSTIN & BOBBY SEDGWICK

**SKETCH:**

\* SEE SECTION SUMMARY FOR \*  
RELATIONSHIP TO AREA CORNERS



**LEGEND**

- ⊕ Number 8 x 30" rebar set with Grant County Aluminum cap
- Number 6 iron bar found
- ⊗ Number 4 iron bar found
- Number 4 x 24" rebar set with red plastic cap
- \*— Approximate existing fence

**AUSTIN ENGINEERING, LLC**  
4211 HWY 81 E, LANCASTER, WI 53813  
PHONE 608-723-6363 FAX 608-723-6702

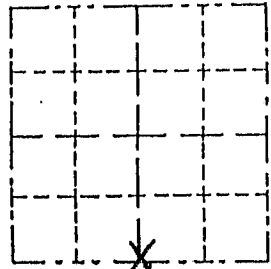
FIELDBOOK: SDR33, 2038  
G:\T5NR1W\36B  
C:\SC14\SWA\TIE\T4NR1W\02

DRAWN BY: SW AUSTIN  
APPROVED: LL AUSTIN  
CREW: BS - SB - SA - TF

Survey Monument Record

TYPE OF MONUMENT 3/4" x 24" Iron Rod  
 STATE PLANE COORDINATES: N \_\_\_\_\_  
 E \_\_\_\_\_  
 ELEVATION — M.S.L. DATUM: \_\_\_\_\_  
 THETA ANGLE: \_\_\_\_\_  
 FIELD BOOK: \_\_\_\_\_  
 PAGE \_\_\_\_\_

CORNER NO. \_\_\_\_\_  
 SECTION 36  
 TOWN 5 NORTH  
 RANGE 1 WEST



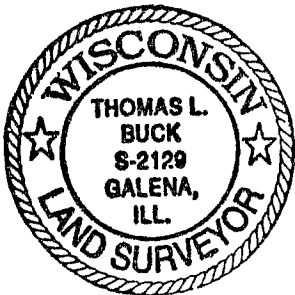
BASIS FOR MONUMENT LOCATION

(Use reverse side if necessary)

Show info such as: History of corner, with reference to Vol. and pg., dates, surveyor; exact description of monument replaced; if location computed, by taped or EDM traverse; landowner, remarks, etc.

- LOCATION  
(Indicated by "X")
- FOUND PERPETUATED LOCATION
  - OBLITERATED EVIDENCE LOCATION
  - LOST CORNER (RESTORED BY PROPORTIONATE METHODS)

I FOUND NO HISTORY OF THIS CORNER SINCE THE ORIGINAL GOVERNMENT SURVEY. I SET THIS CORNER BY USING EXISTING PHYSICAL EVIDENCE AND PROPORTIONATE MEASUREMENTS FROM AN E. D. M. TRAVERSE AND LOCATION SURVEY OF SECTION 36.



CERTIFIED CORRECT TO THE BEST OF MY KNOWLEDGE AND BELIEF

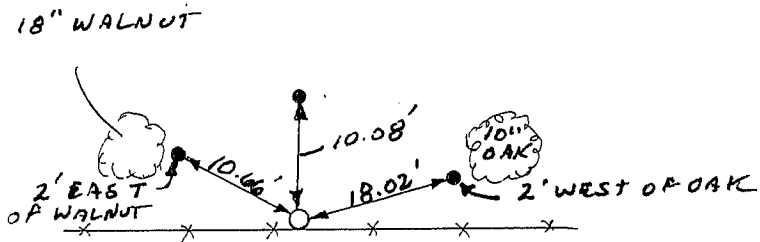
Thomas Buck

Registered Land Surveyor

DATE: 7/30/99

TIE SKETCH

Show at least three (3) ties and monument



N  
 NO SCALE

- = 3/4" x 24" Iron Rod
- = 1/2" Iron Rod

\*-\*- = EXISTING FENCE