

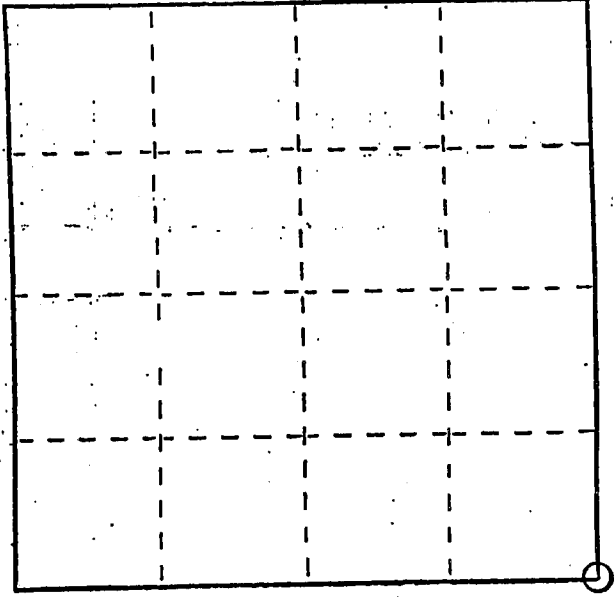
~~13~~  
 NW 6-T4N-R1E  
 Sec. 36, T5N, R1W

13

U. S. PUBLIC LAND SURVEY MONUMENT RECORD

INSTRUCTIONS: This record shall show the location of the corner and shall include all of the following nine elements (a through i).

- (a) Identify the corner by reference to the U.S. public land survey system.
- = Corner monument restored.



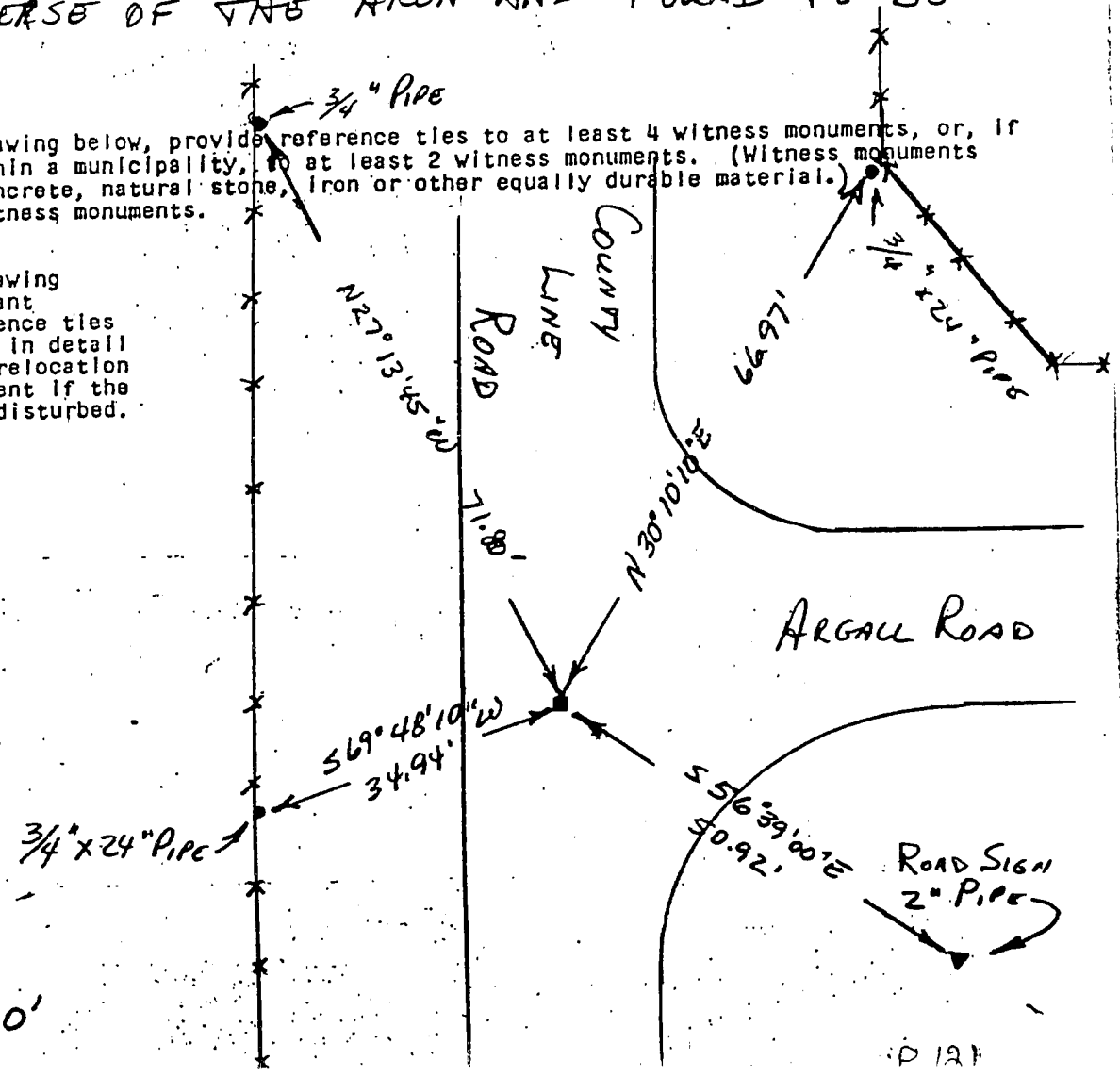
SOUTHWEST CORNER OF  
 SECTION 36, TOWN 5 NORTH,  
 RANGE 1 WEST, CLIFTON  
 TOWNSHIP, GRANT COUNTY,  
 WISCONSIN

- (b) Describe any record evidence, monument evidence, occupational evidence, testimonial evidence or any other material evidence you considered, and whether the monument was found or placed.

SET MONUMENT AT CENTERLINES OF ROADS, WHERE A HOLE WAS FOUND IN THE PAVEMENT THAT WAS VERIFIED BY PROPORTIONATE MEASUREMENTS FROM AN EDM TRAVERSE OF THE AREA AND FOUND TO BE CORRECT.

- (c) In the plan view drawing below, provide reference ties to at least 4 witness monuments, or, if the location is within a municipality, to at least 2 witness monuments. (Witness monuments shall be made of concrete, natural stone, iron or other equally durable material.) Describe witness monuments.

- (d) Show a plan view drawing depicting the relevant monuments and reference ties which is sufficient in detail to enable accurate relocation of the corner monument if the corner monument is disturbed. Indicate north.



GRANT COUNTY CLERK  
 RECEIVED

MAY 31 1985

SCALE: 1" = 20'

(e) Describe any material discrepancy between the location of the corner as restored or reestablished and the location of that corner as previously restored or reestablished by distance and direction. Show the discrepancy on the plan view drawing under (d), above. Show the distances between the corner as previously restored or reestablished and (1) the corner as restored or reestablished, and (2) to at least 2 of the witness monuments shown on the drawing in (d), above.

NONE

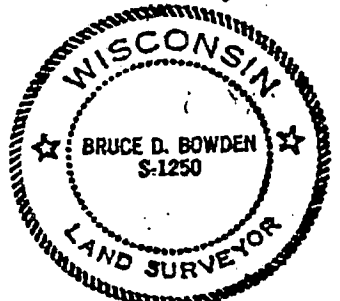
(f) Was the corner restored through acceptance of (1) an obliterated evidence location, or, (2) a found perpetuated location?

(1) AN OBLITERATED EVIDENCE LOCATION

(g&h) Was the corner reestablished through lost corner proportionate methods? If so, show the method, including the directions and distances to other public land survey corners used as evidence or used for proportioning in determining the corner location?

No.

Affix Land Surveyor Seal



(i) I, Bruce D. Bowden  
(type or print name) certify that the corner location shown on this record was determined by me or under my direction and control and that this U.S. Public Land Survey Monument Record is correct and complete to the best of my knowledge and belief.

Bruce D. Bowden

April 24, 1985  
Date

Sec. 36, T5N, R1W

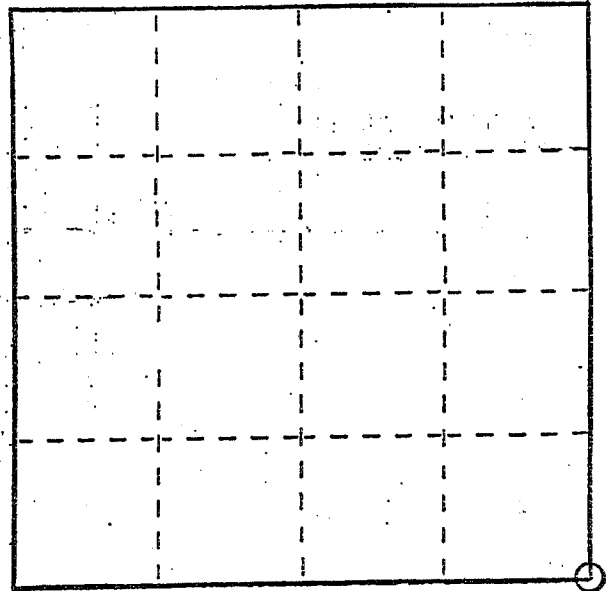
# U. S. PUBLIC LAND SURVEY MONUMENT RECORD

### INSTRUCTIONS:

This record shall show the location of the corner and shall include all of the following nine elements (a through i).

- (a) Identify the corner by reference to the U.S. public land survey system.
- = Corner monument restored.

SOUTHWEST CORNER OF  
SECTION 36, TOWN 5 NORTH,  
RANGE 1 WEST, CLIFTON  
TOWNSHIP, GRANT COUNTY,  
WISCONSIN

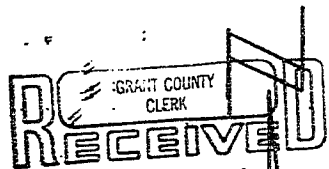


- (b) Describe any record evidence, monument evidence, occupational evidence, testimonial evidence or any other material evidence you considered, and whether the monument was found or placed.

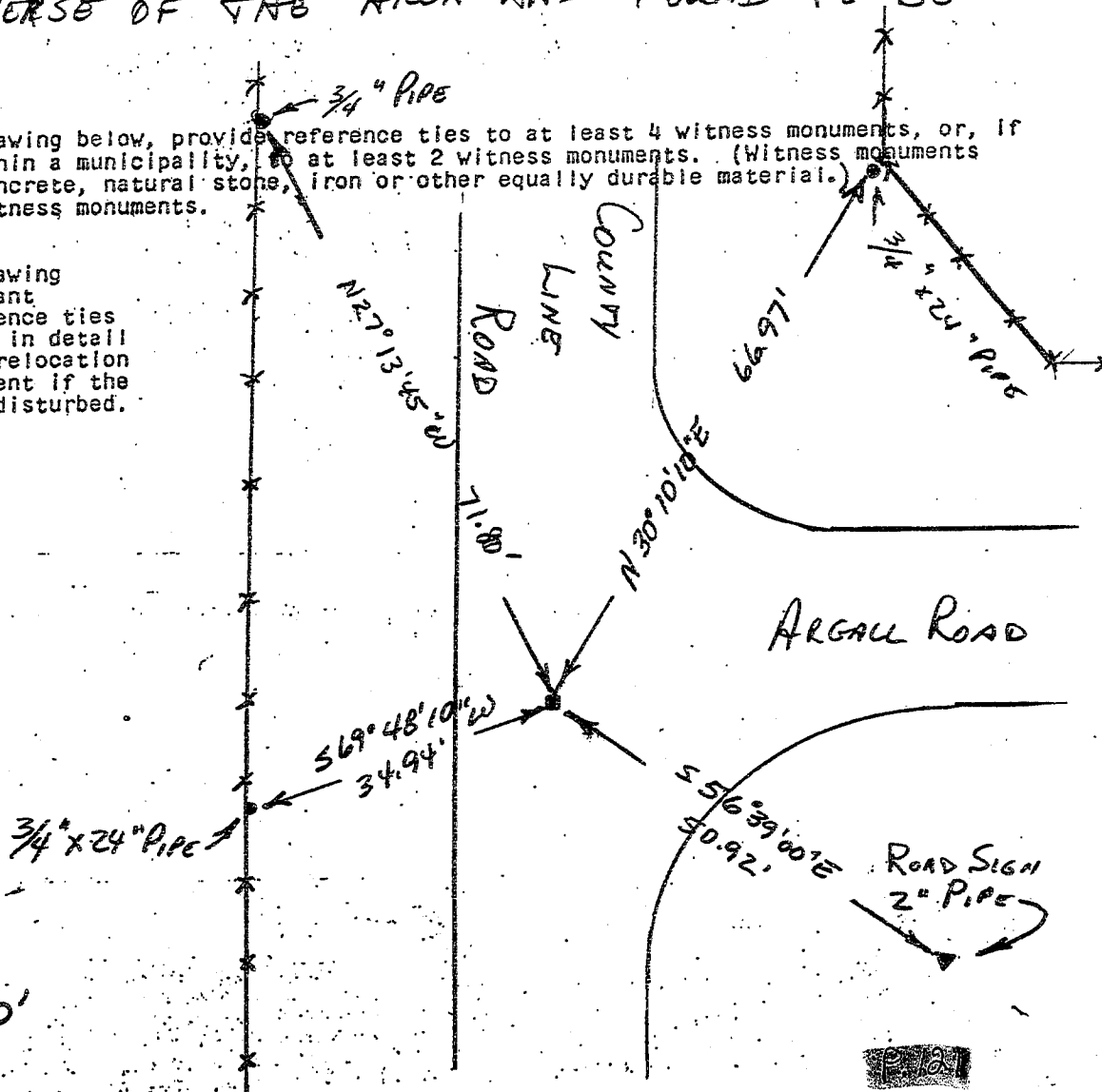
SET MONUMENT AT CENTERLINES OF ROADS, WHERE A HOLE WAS FOUND IN THE PAVEMENT THAT WAS VERIFIED BY PROPORTIONATE MEASUREMENTS FROM AN EDM TRAVERSE OF THE AREA AND FOUND TO BE CORRECT.

- (c) In the plan view drawing below, provide reference ties to at least 4 witness monuments, or, if the location is within a municipality, to at least 2 witness monuments. (Witness monuments shall be made of concrete, natural stone, iron or other equally durable material.) Describe witness monuments.

- (d) Show a plan view drawing depicting the relevant monuments and reference ties which is sufficient in detail to enable accurate relocation of the corner monument if the corner monument is disturbed. Indicate north.



MAY 31 1935



SCALE: 1" = 20'

(e) Describe any material discrepancy between the location of the corner as restored or reestablished and the location of that corner as previously restored or reestablished by distance and direction. Show the discrepancy on the plan view drawing under (d), above. Show the distances between the corner as previously restored or reestablished and (1) the corner as restored or reestablished, and (2) to at least 2 of the witness monuments shown on the drawing in (d), above.

NONE

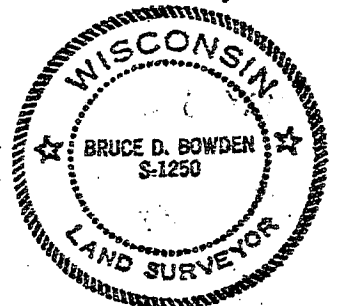
(f) Was the corner restored through acceptance of (1) an obliterated evidence location, or, (2) a found perpetuated location?

(1) AN OBLITERATED EVIDENCE LOCATION

(g&h) Was the corner reestablished through lost corner proportionate methods? If so, show the method, including the directions and distances to other public land survey corners used as evidence or used for proportioning in determining the corner location?

No.

Affix Land Surveyor Seal



(i) I, Bruce D. Bowden  
(type or print name) certify that the corner location shown on this record was determined by me or under my direction and control and that this U.S. Public Land Survey Monument Record is correct and complete to the best of my knowledge and belief.

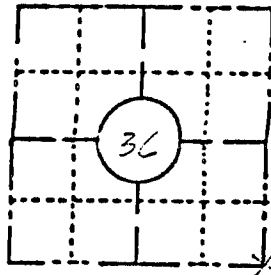
Bruce D. Bowden  
Signature

April 24, 1985  
Date

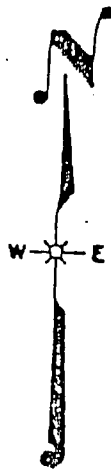
**FIELD SURVEY NOTES**  
**PRESERVATION OF LANDMARKS**  
 (Pursuant to Section 59.635(7) Wisconsin Statutes)

Highway Commission of Wisconsin  
 Form E-D-707-65

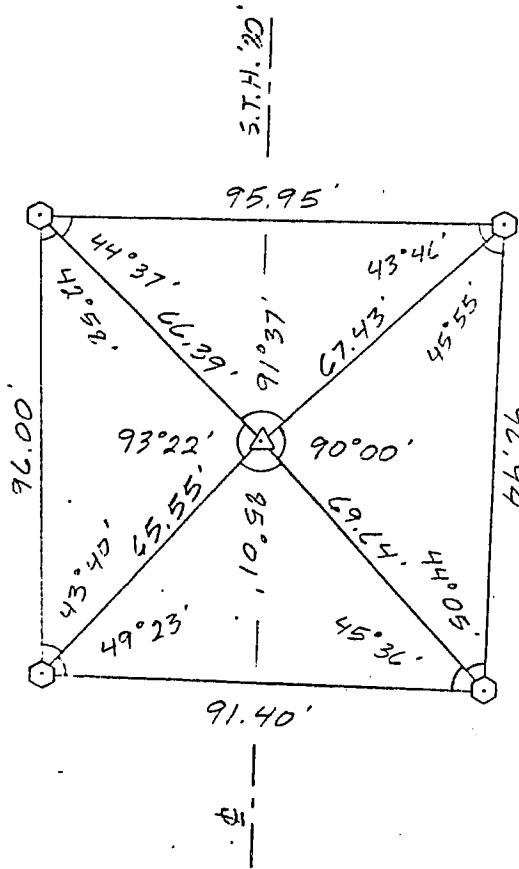
COUNTY GRANT		
TOWN WINGVILLE		
HIGHWAY S.T.H. '80'		
SECTION 36	TOWNSHIP T6N	RANGE R1W
TYPE OF LANDMARK SECTION CORNER MONUMENT		



**LOCATION SKETCH**  
 (Location of landmark indicated by "x")



This space for copy of field notes or ties to the above described landmarks



5035-00-71, 5936-00-11  
 0022-74-00  
 Plattville - Mont  
 Water Street, Cl  
 Structures B-22-7  
 3TH 80, Grant &  
 Fayer & Dolan, Inc.

SCALE  
 1" = 40'

- = REFERENCE MONUMENT - O
- = RIGHT OF WAY POST - □
- = WITNESS POST - ◊
- = SECTION CORNER LOCATION - Δ

COUNTY CLERK'S OFFICE	
COUNTY OF	WISCONSIN 33
DATE RECEIVED FOR RECORD	DATE COPY SENT TO COUNTY SURVEYOR
SIGNATURE OF COUNTY CLERK	