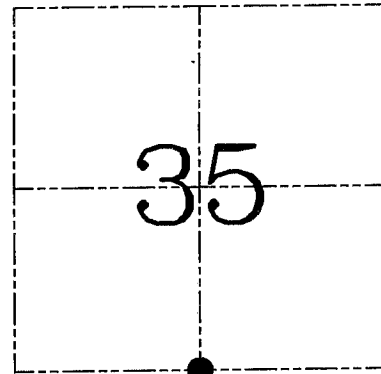
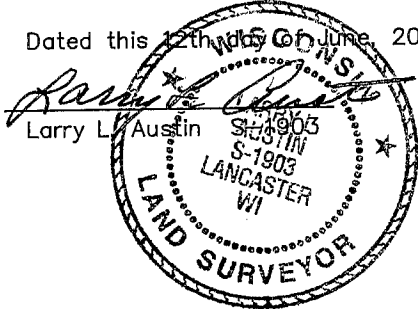


**U.S. PUBLIC LAND SURVEY MONUMENT RECORD – GRANT COUNTY, WI**  
**Section 35, Town 5 North Range 1 West, Town of Clifton**

**CERTIFICATE**

I, Larry L. Austin, do hereby certify that the corner location on this record was determined by me and/or under my direct supervision and that this U.S. public land survey monument record is correct and complete to the best of my knowledge and belief.

Dated this 12th day of June, 2003



● = CORNER LOCATION

**HISTORY OF CORNER ESTABLISHMENT**

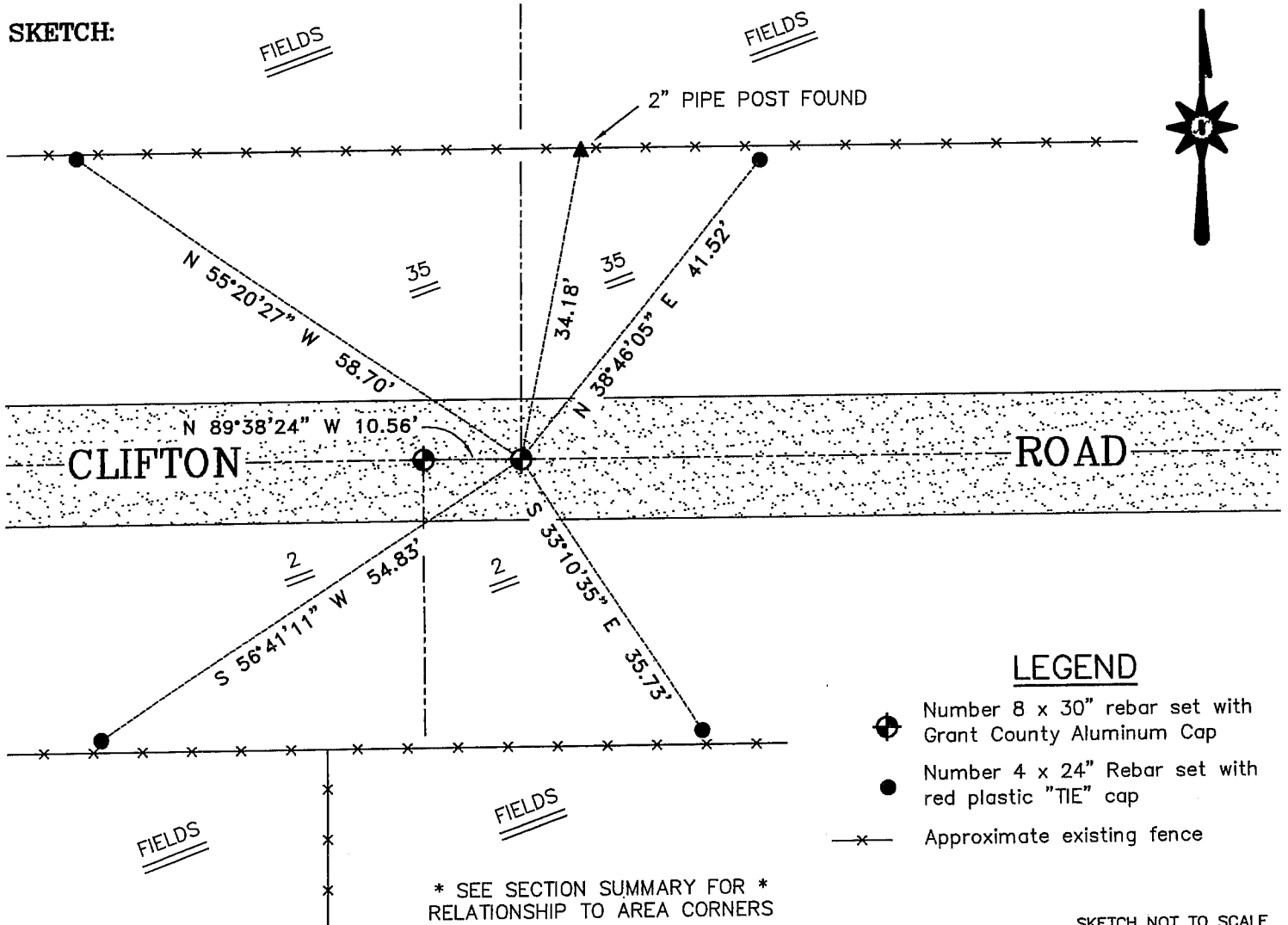
Corner was originally set in 1832 by Sibley.  
 In 1847 Stuntz tied to the corner and set new bearing trees.

**DESCRIPTION OF CORNER EVIDENCE FOUND**

No evidence of Stuntz location was found. I reset the corner at the proportioned offset from the North Quarter corner of Section 2, T4N R1W. Verified this location using EDM & GPS methods.

**DESCRIPTION OF CORNER AND WITNESS MONUMENTS**, references and accessories used to perpetuate the original or re-established location of this corner. Witnesses to corner location Bobby Sedgwick & Shelby Blindert & Brad Digman

**SKETCH:**



**LEGEND**

- ⊕ Number 8 x 30" rebar set with Grant County Aluminum Cap
- Number 4 x 24" Rebar set with red plastic "TIE" cap
- x— Approximate existing fence

\* SEE SECTION SUMMARY FOR \*  
 RELATIONSHIP TO AREA CORNERS

SKETCH NOT TO SCALE

**AUSTIN ENGINEERING, LLC**  
 4211 HWY 81 EAST, LANCASTER, WI 53813  
 PHONE 608-723-6363 FAX 608-723-6702

FIELDBOOK: TDS RNGR, 2303  
 G: \T5NR1W\36B  
 H: \TIE\T5NR1W\124  
 JOB NUMBER 03S081

DRAWN BY: SW AUSTIN  
 APPROVED: LL AUSTIN

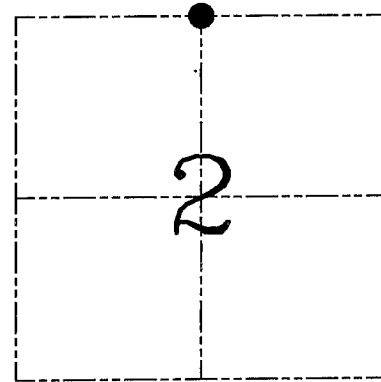
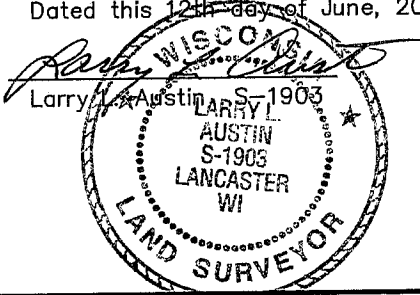
**CORNER NUMBER 124**

**U.S. PUBLIC LAND SURVEY MONUMENT RECORD – GRANT COUNTY, WI**  
**Section 02, Town 4 North Range 1 West, Town of Lima**

**CERTIFICATE**

I, Larry L. Austin, do hereby certify that the corner location on this record was determined by me and/or under my direct supervision and that this U.S. public land survey monument record is correct and complete to the best of my knowledge and belief.

Dated this 12th day of June, 2003



● = CORNER LOCATION

**HISTORY OF CORNER ESTABLISHMENT**

Corner was not set in 1833 original survey.  
 No record of the corner was found.

**DESCRIPTION OF CORNER EVIDENCE FOUND**

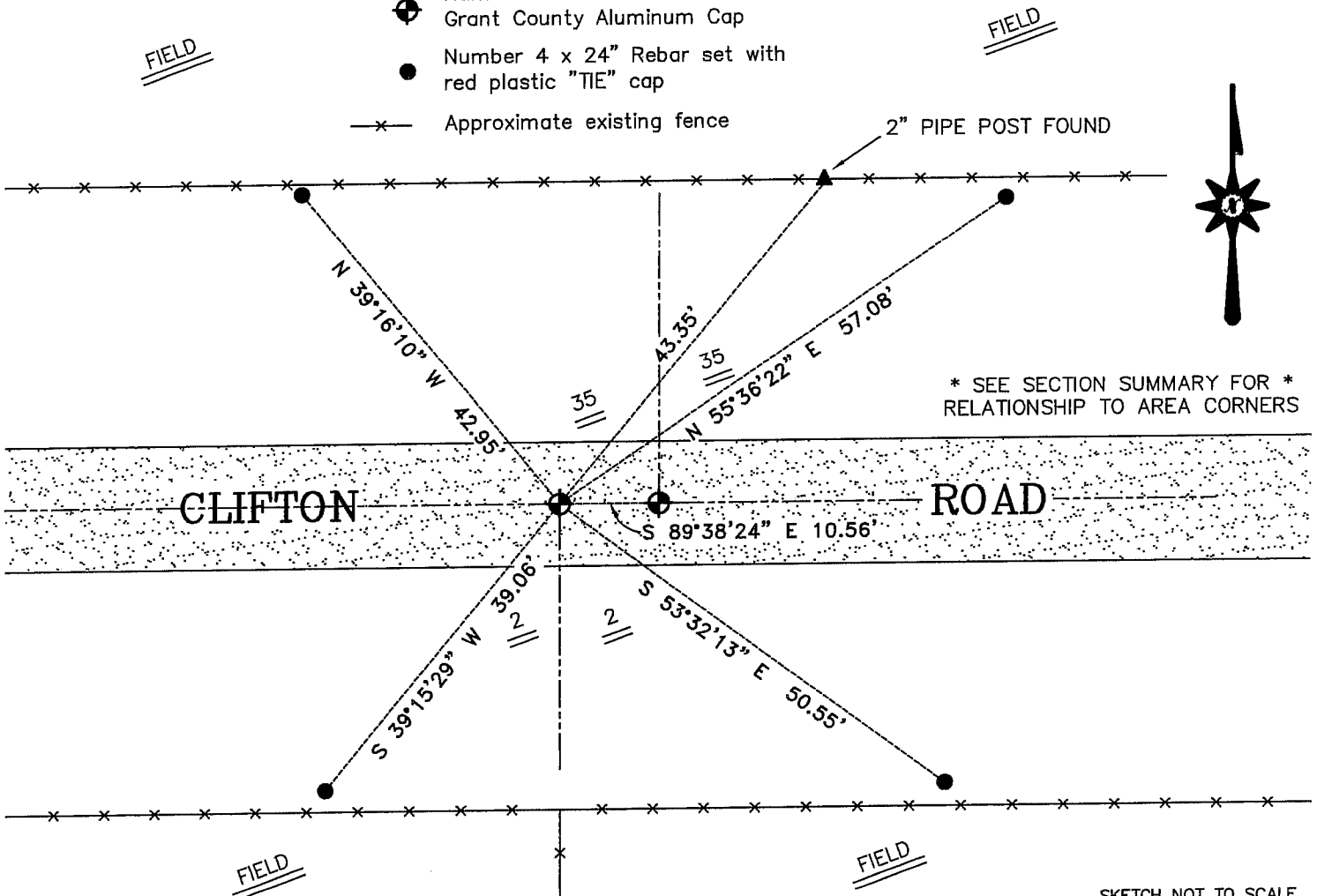
I reset the corner based on occupational evidence.  
 Verified this location using EDM & GPS methods.

**DESCRIPTION OF CORNER AND WITNESS MONUMENTS**, references and accessories used to perpetuate the original or re-established location of this corner. Witnesses to corner location Bobby Sedgwick & Shelby Blindert & Brad Digman

**LEGEND**

**SKETCH:**

- ⊕ Number 8 x 30" rebar set with Grant County Aluminum Cap
- Number 4 x 24" Rebar set with red plastic "TIE" cap
- x— Approximate existing fence



**AUSTIN ENGINEERING, LLC**  
 4211 HWY 81 EAST, LANCASTER, WI 53813  
 PHONE 608-723-6363 FAX 608-723-6702

FIELDBOOK: TDS RNGR, 23-03  
 G: \T5NR1W\36B  
 H: \TIE\T4NR1W\04  
 JOB NUMBER: 03S081

DRAWN BY: SW AUSTIN  
 APPROVED: LL AUSTIN

**CORNER NUMBER 04**