

U.S. PUBLIC LAND SURVEY MONUMENT RECORD

(a) Identify the corner to the U.S. Public Land Survey System.

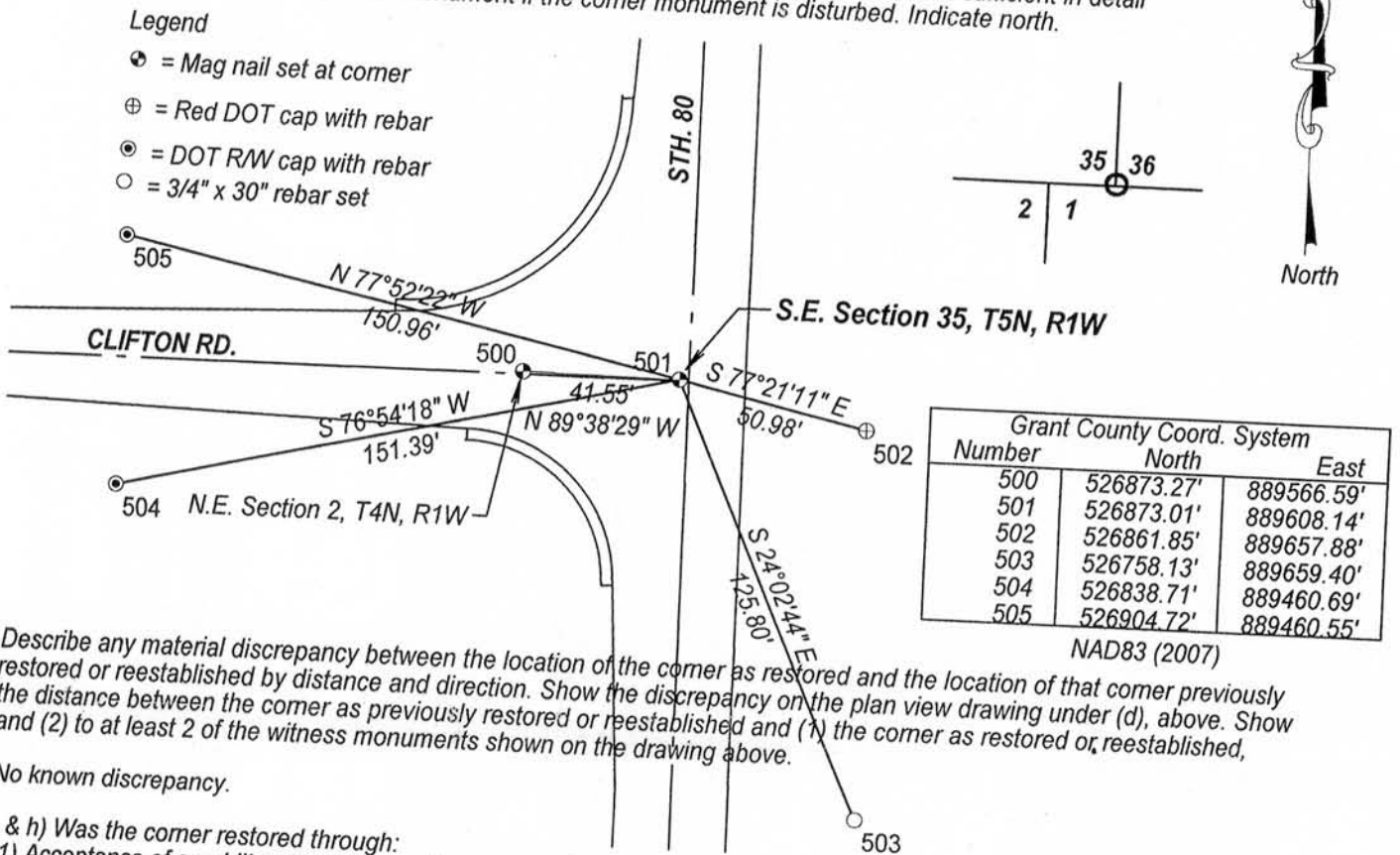
Southeast corner of Section 35, Town 5 North, Range 1 West, Clifton Township, Grant County, Wisconsin.

(b) Describe any record evidence, occupational evidence, testimonial evidence or any material evidence you considered, and if the monument was found or placed.

I found and accepted a railroad spike. The railroad spike was consistent with the location described in WIDOT Project Plat # 5035-00-21 and record ties. After road construction, I reestablished the corner as shown below.

(c) In the plan view below, provide reference ties to at least 4 witness monuments. (Witness monuments shall be made of concrete, material stone, iron or other durable material) Describe the witness monuments.

(d) Show a plan view drawing depicting the relevant monuments and reference ties which is sufficient in detail to enable accurate relocation of the monument if the corner monument is disturbed. Indicate north.



(e) Describe any material discrepancy between the location of the corner as restored and the location of that corner previously restored or reestablished by distance and direction. Show the discrepancy on the plan view drawing under (d), above. Show the distance between the corner as previously restored or reestablished and (1) the corner as restored or reestablished, and (2) to at least 2 of the witness monuments shown on the drawing above.

No known discrepancy.

(f, g & h) Was the corner restored through:

- (1) Acceptance of an obliterated evidence location, or
- (2) Acceptance of a found perpetuated location, or
- (3) Lost corner proportionate methods? If lost corner methods were used, show the method, including the direction and distance to other Public Land survey corners used as evidence or used for proportioning in determining the corner location.

(2) Acceptance of a found perpetuated location.

(i) I Anthony J. Alt, certify that the corner location shown on this record was determined by me or under my direction and control and that this U.S. Public Land Survey Monument is accurate and complete to the best of my knowledge and belief.



Anthony J. Alt
Signature

11-7-12
Date

Affix Seal

NOV 21 2012

123

GRANT COUNTY CERTIFIED LAND CORNER

CORNER NUMBER 123

CERTIFICATE:

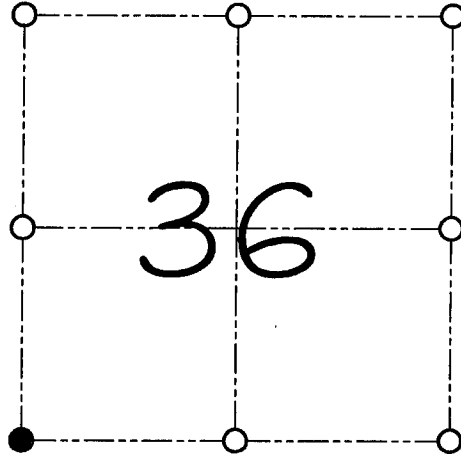
I, Larry L. Austin, do hereby certify that on the 24th day of August, 2000, I found evidence of the Southwest corner of Section 36, Town 5 North, Range 1 West, of the 4th Principal Meridian, and I re-established said corner according to the Wisconsin statutes as shown and described hereon.

Dated this 8th day of September, 2000.

Larry L. Austin
Larry L. Austin S-1903



SEAL



● = CORNER LOCATION

SOUTHWEST CORNER OF
SECTION 36, T 5 N R. 1 W
TOWN OF CLIFTON

HISTORY OF ORIGINAL CORNER ESTABLISHMENT:

Corner was originally set in 1832 by Sibley.
No other record of the corner was found.

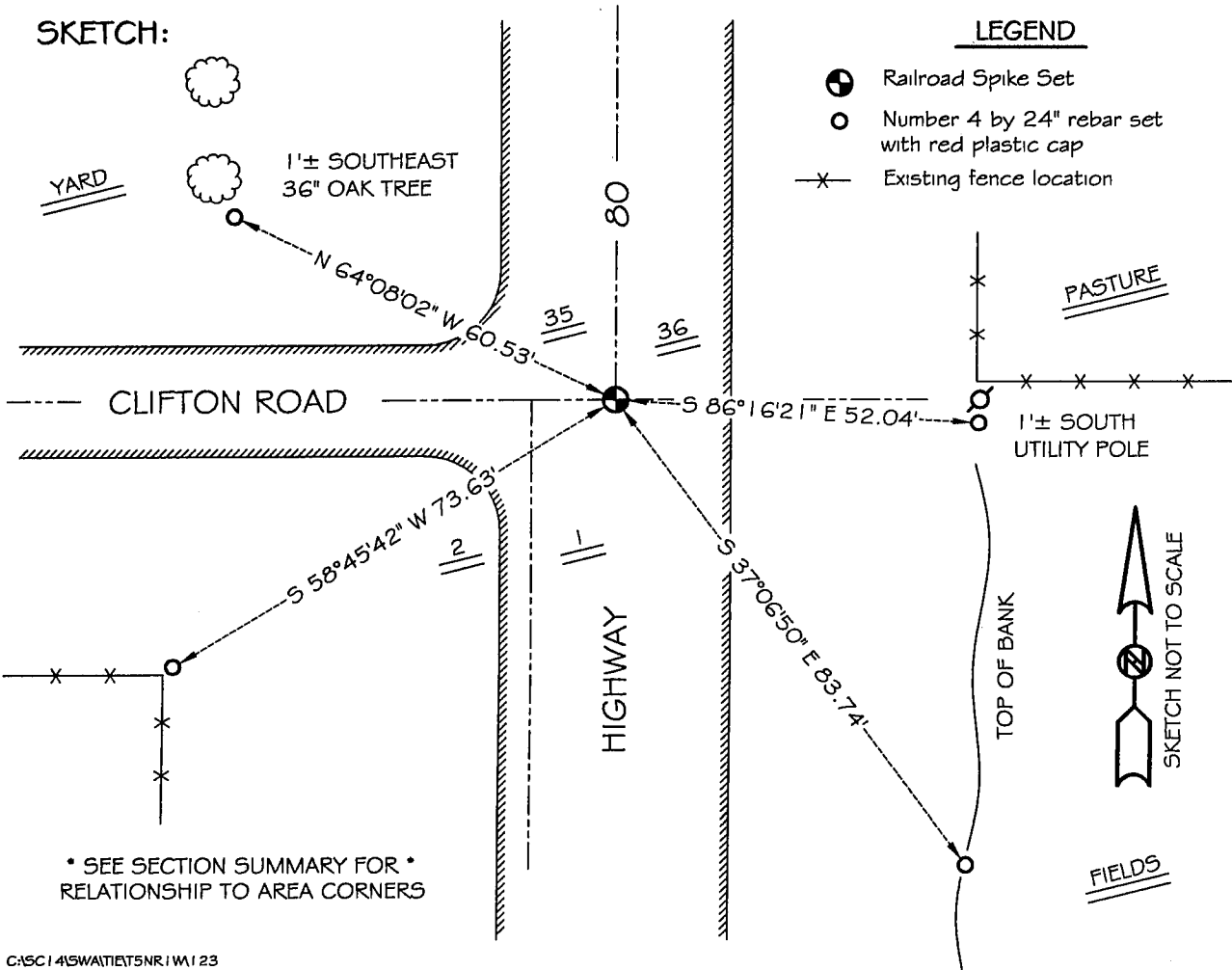
DESCRIPTION OF CORNER EVIDENCE FOUND:

I reset the corner at an occupied location.
I accepted it's location after an E.D.M. & G.P.S. traverse of the area.

DESCRIPTION OF CORNER AND WITNESS MONUMENTS, references and accessories used to perpetuate the original or re-established location of this corner

WITNESS TO THE CORNER LOCATION: SHANE AUSTIN & JERRY SPEILMAN

SKETCH:



U.S. PUBLIC LAND SURVEY MONUMENT RECORD

(a) Identify the corner to the U.S. Public Land Survey System.

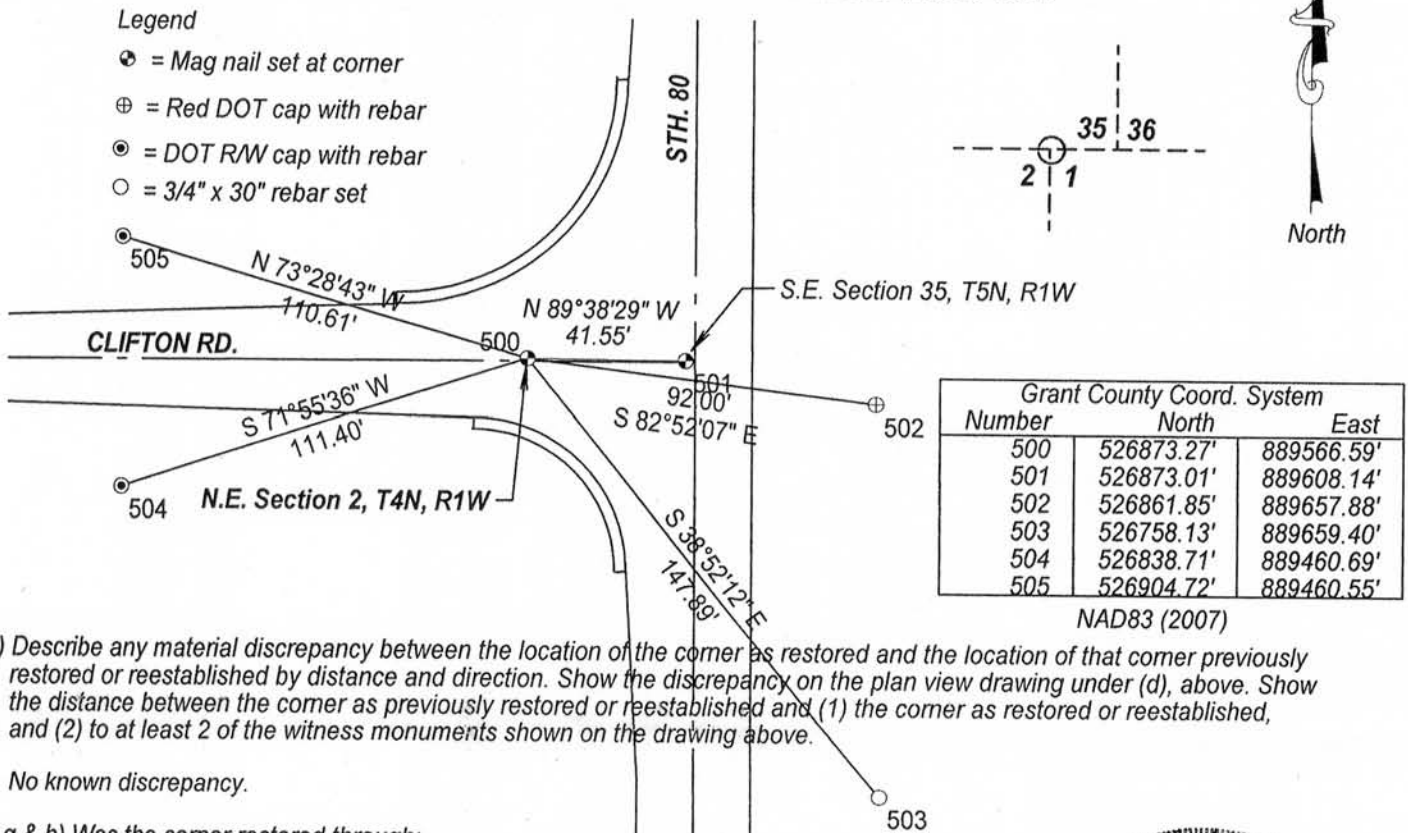
Northeast corner of Section 2, Town 4 North, Range 1 West, Lima Township, Grant County, Wisconsin.

(b) Describe any record evidence, occupational evidence, testimonial evidence or any material evidence you considered, and if the monument was found or placed.

I found a Grant County Aluminum cap. The Aluminum cap was consistent with the location described in WiDOT Project Plat # 5035-00-21 and existing ties. After road construction, I reset the corner as shown below.

(c) In the plan view below, provide reference ties to at least 4 witness monuments. (Witness monuments shall be made of concrete, material stone, iron or other durable material) Describe the witness monuments.

(d) Show a plan view drawing depicting the relevant monuments and reference ties which is sufficient in detail to enable accurate relocation of the monument if the corner monument is disturbed. Indicate north.



(e) Describe any material discrepancy between the location of the corner as restored and the location of that corner previously restored or reestablished by distance and direction. Show the discrepancy on the plan view drawing under (d), above. Show the distance between the corner as previously restored or reestablished and (1) the corner as restored or reestablished, and (2) to at least 2 of the witness monuments shown on the drawing above.

No known discrepancy.

(f, g & h) Was the corner restored through:

- (1) Acceptance of an obliterated evidence location, or
- (2) Acceptance of a found perpetuated location, or
- (3) Lost corner proportionate methods? If lost corner methods were used, show the method, including the direction and distance to other Public Land survey corners used as evidence or used for proportioning in determining the corner location.

(2) Acceptance of a found perpetuated location.

(i) I Anthony J. Alt, certify that the corner location shown on this record was determined by me or under my direction and control and that this U.S. Public Land Survey Monument is accurate and complete to the best of my knowledge and belief.



Anthony J. Alt
Signature

11-7-12
Date

Affix Seal
NOV 21 2012

U.S. PUBLIC LAND SURVEY MONUMENT RECORD

(AS REQUIRED BY s.A-E 7.08, WI. ADM. CODE)

HISTORY OF ORIGINAL CORNER ESTABLISHMENT AND SUBSEQUENT RESTORATIONS AND DESCRIPTION OF ANY RECORD, MONUMENT, OCCUPATION, TESTIMONIAL OR OTHER EVIDENCE CONSIDERED

HISTORY IS THE ORIGINAL GOV'T. SURVEY. A CONVEYANCE FOR HIGHWAY PURPOSES RECORDED IN V.283 ON PG. 469 INDICATES THE CORNER TO BE 20' WEST OF CENTERLINE. OF HWY 80 WHICH WAS DISCARDED. I SET THE CORNER FACTORED TO THE GOVT. RECORD BETWEEN AUSTINS SW COR. 36-5-1W AND N 1/4 2-4-1W AS SHOWN BELOW.

COORDINATES ARE ESTABLISHED TO THE CORNER AND WITNESS TIES AS SHOWN BELOW
 BEARING REFERENCE AND COORDINATES ARE GRANT COUNTY COORDINATE SYSTEM
 NAD 83(91) ENGLISH SYSTEM N = 526873.08 E = 889566.72

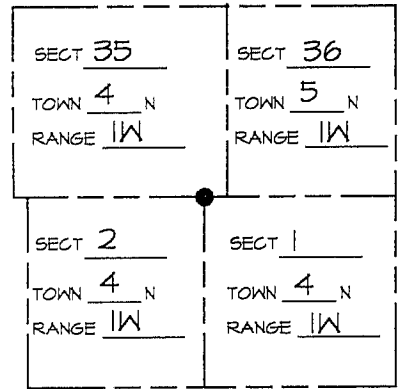
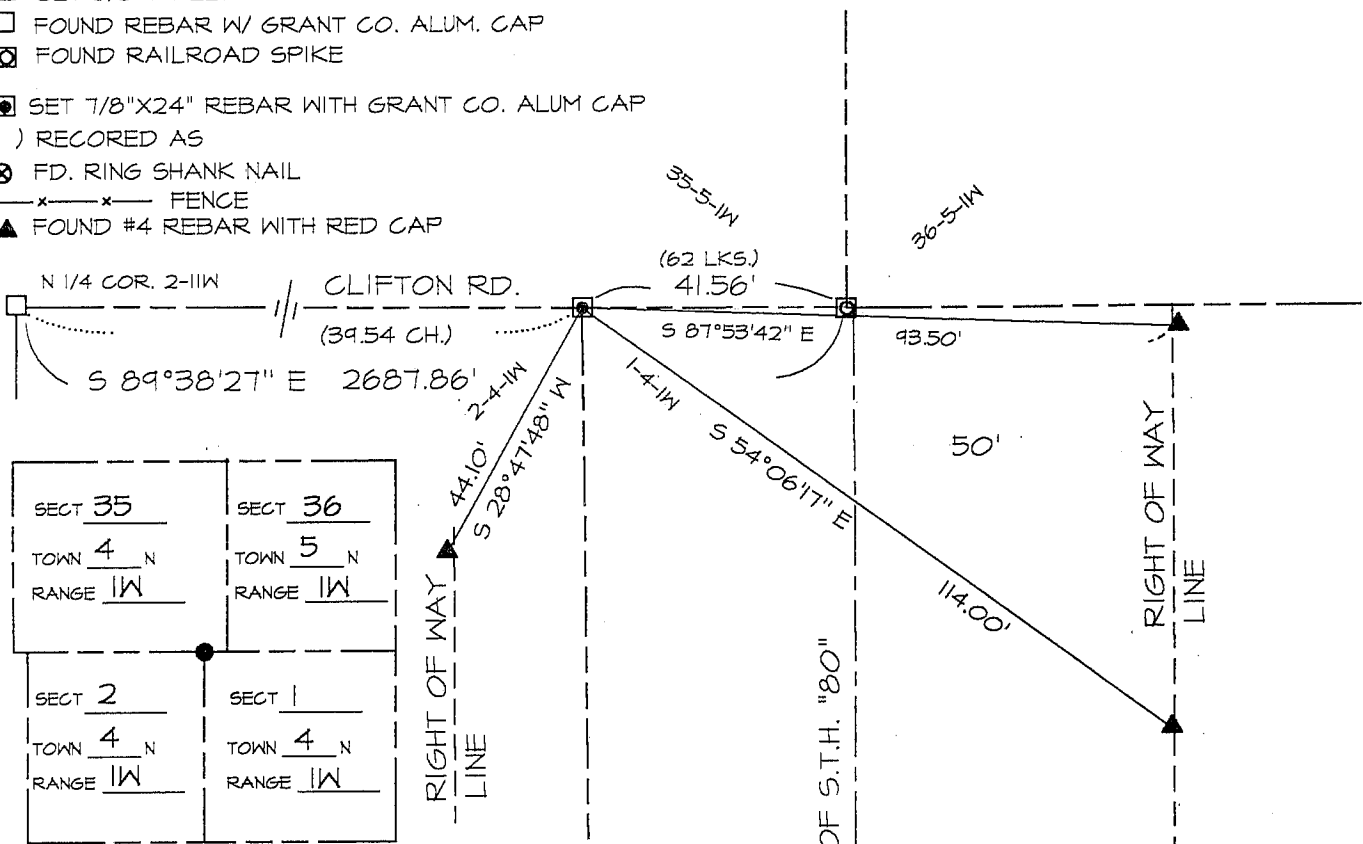
CORNER WAS: (CHECK ALL THAT APPLY)

- RESTORED THROUGH ACCEPTANCE OF AN OBLITERATED EVIDENCE LOCATION
- RESTORED THROUGH ACCEPTANCE OF A FOUND PERPETUATED LOCATION CONSIDERED A LOST CORNER AND REESTABLISHED THROUGH LOST CORNER PROPORTIONATE METHODS (INCLUDE A PLAN VIEW DRAWING SHOWING BEARING & DISTANCE TO OTHER PUBLIC LAND SURVEY CORNERS USED FOR PROPORTIONING AND DETERMINING THE CORNER LOCATION)
- RESTORED OR REESTABLISHED IN A LOCATION THAT DIFFERS FROM A PREVIOUS RESTORATION OR REESTABLISHMENT (INCLUDE A PLAN VIEW DRAWING AND INDICATE WHAT WAS SET AND/OR FOUND)

Describe the monument and accessories used to perpetuate the location of the corner. (Include a plan view drawing and indicated what was set and/or found)

LEGEND:

- △ SET 5/8"φ REBAR TIE
- FOUND REBAR W/ GRANT CO. ALUM. CAP
- ⊠ FOUND RAILROAD SPIKE
- SET 7/8"X24" REBAR WITH GRANT CO. ALUM CAP
- () RECORDED AS
- ⊗ FD. RING SHANK NAIL
- x—x— FENCE
- ▲ FOUND #4 REBAR WITH RED CAP



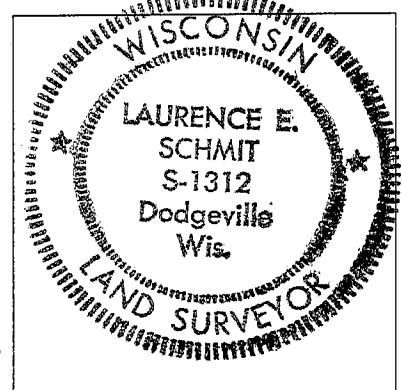
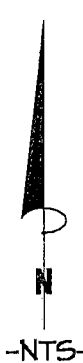
● = LOCATION OF CORNER
 THE NW COR. OF SECT 1 T 4 N, R 1W
 THE COR. OF SECT T N, R
 THE NE COR. OF SECT 2 T 4 N, R 1W
 THE COR. OF SECT T N, R

GRANT _____ COUNTY, WISCONSIN
 JOB ID: 045-176 BOOK #: 2004-3 P. 63

I, LAURENCE E SCHMIT CERTIFY THAT THE CORNER LOCATION SHOWN ON THIS RECORD WAS DETERMINED BY ME OR UNDER MY DIRECTION AND CONTROL AND THAT THIS U.S. PUBLIC LAND SURVEY MONUMENT RECORD IS CORRECT AND COMPLETE TO THE BEST OF MY KNOWLEDGE AND BELIEF.

Laurence E Schmit
 SIGNATURE

9-21-04
 DATE:



LAND SURVEYORS SEAL
 INDEX NUMBER _____