

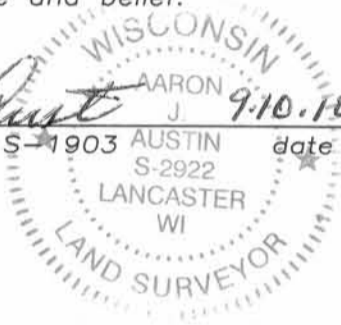
U.S. PUBLIC LAND SURVEY MONUMENT RECORD

Section 35, Town 5 North Range 1 West, Town of Clifton, Grant County, Wisconsin

CERTIFICATE

I, Larry L. Austin, do hereby certify that the corner location on this record was determined by me and/or under my direct supervision and that this U.S. public land survey monument record is correct and complete to the best of my knowledge and belief.

Larry L. Austin
 Larry L. Austin, S-1903 AUSTIN date 9.10.10
 S-2922



● = CORNER LOCATION

HISTORY OF CORNER

Corner was originally set in 1832 by Parker. In 1847 Stuntz found a hickory post. No other record of the corner was found.




CORNER EVIDENCE FOUND

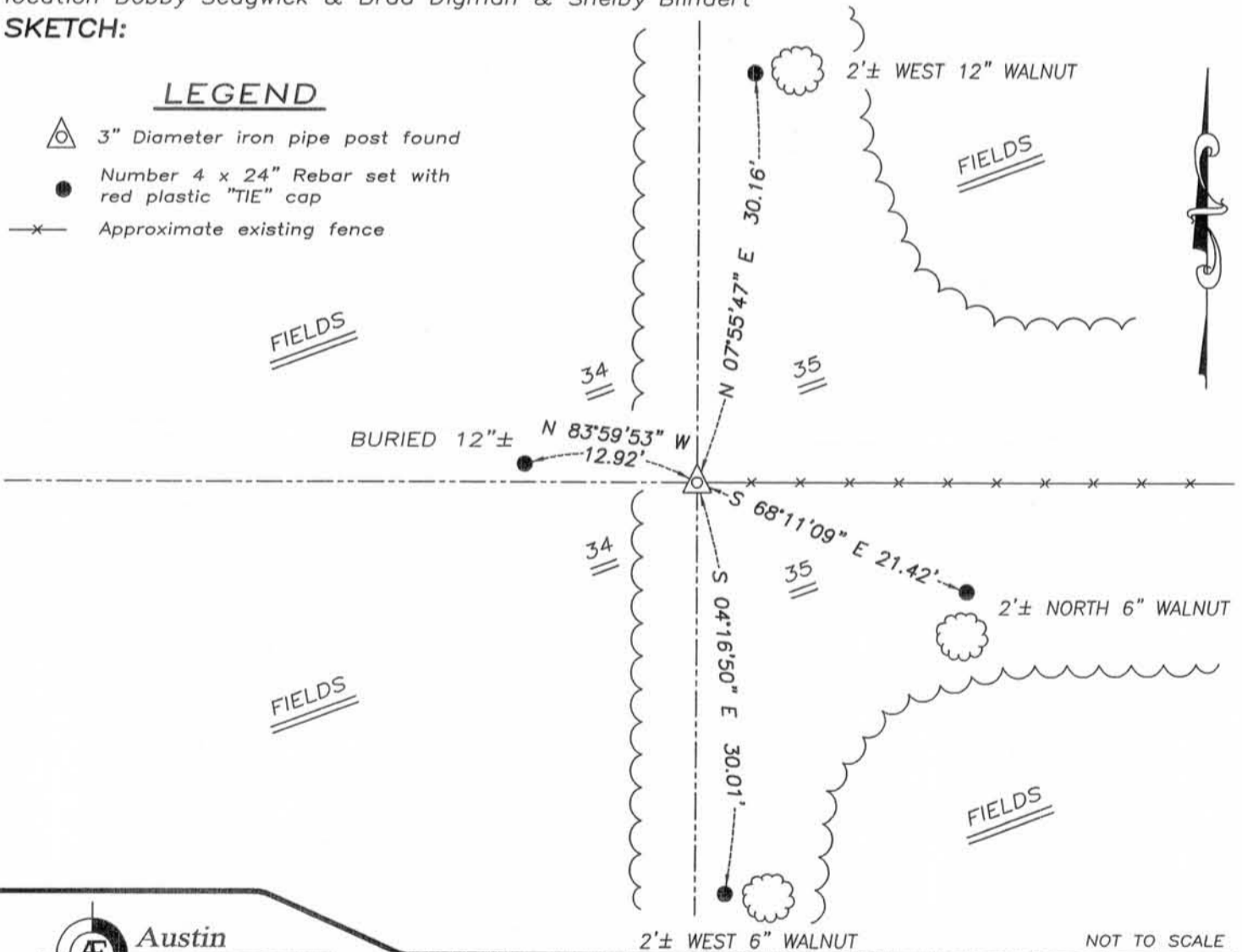
I found and accepted an occupied location after an EDM & GPS traverse of the area.

DESCRIPTION OF CORNER AND WITNESS MONUMENTS, references and accessories used to perpetuate the original or re-established location of this corner. Witnesses to monument location Bobby Sedgwick & Brad Digman & Shelby Blindert

SKETCH:

LEGEND

-  3" Diameter iron pipe post found
-  Number 4 x 24" Rebar set with red plastic "TIE" cap
-  Approximate existing fence



NOT TO SCALE



Austin Engineering LLC
 austinengineeringllc.com

4211 HWY 81 E, LANCASTER, WI 53813
 PHONE: 608-723-6363 FAX: 608-723-6702

JOB NUMBER 10S154-AECOM
 FIELDBOOK: TDSR, 1002
 G:\GRANTDOT\T5NR1W
 H:\TIE\T5NR1W\118

DRAWN BY: SW AUSTIN
 APPROVED: LL AUSTIN

118

NOV 19 2010