

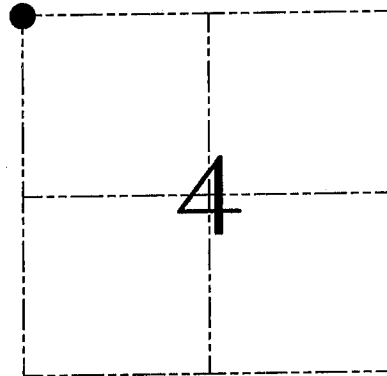
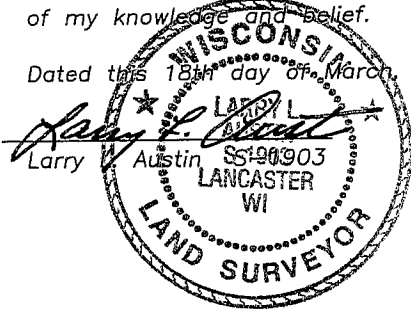
**U.S. PUBLIC LAND SURVEY MONUMENT RECORD – GRANT COUNTY, WI**

**Section 4, Town 4 North Range 1 West, Town of Lima**

CERTIFICATE

I, Larry L. Austin, do hereby certify that the corner location on this record was determined by me and/or under my direct supervision and that this U.S. public land survey monument record is correct and complete to the best of my knowledge and belief.

Dated this 18<sup>th</sup> day of March, 2005



● = CORNER LOCATION

HISTORY OF CORNER ESTABLISHMENT

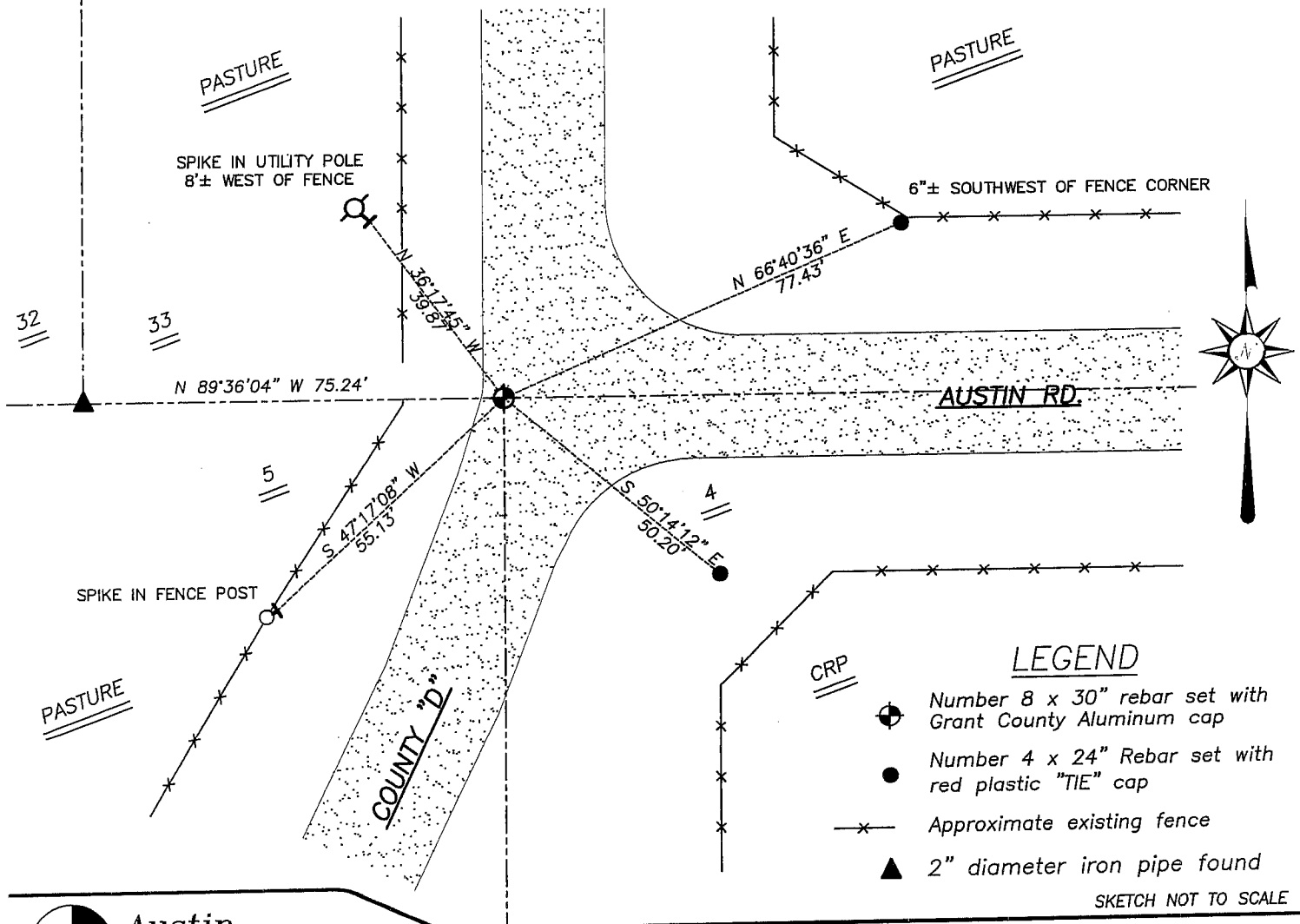
Corner was originally set in 1833 by Clark.  
No other record of the corner was found.

DESCRIPTION OF CORNER EVIDENCE FOUND

I set the corner at the recorded offset from the Southwest corner and on-line between the Southwest corner and South 1/4 of Section 33, T5N R1W. Verified this location using EDM & GPS methods.

DESCRIPTION OF CORNER AND WITNESS MONUMENTS, references and accessories used to perpetuate the original or re-established location of this corner. Witnesses to corner location Bobby Sedgwick & Brad Digman & Shane Austin

**SKETCH:**



**Austin Engineering LLC**

4211 HWY 81 E, LANCASTER, WI 53813  
PHONE 608-723-6363 FAX 608-723-6702

JOB NUMBER 05S039  
FIELDBOOK: TDSR, 2517  
G:\T5NR1W\32  
H:\TIE\T4NR1W\09

DRAWN BY: BJ HAZEN  
APPROVED: LL AUSTIN

SKETCH NOT TO SCALE

US. PUBLIC LAND SURVEY MONUMENT RECORD

Little Grant

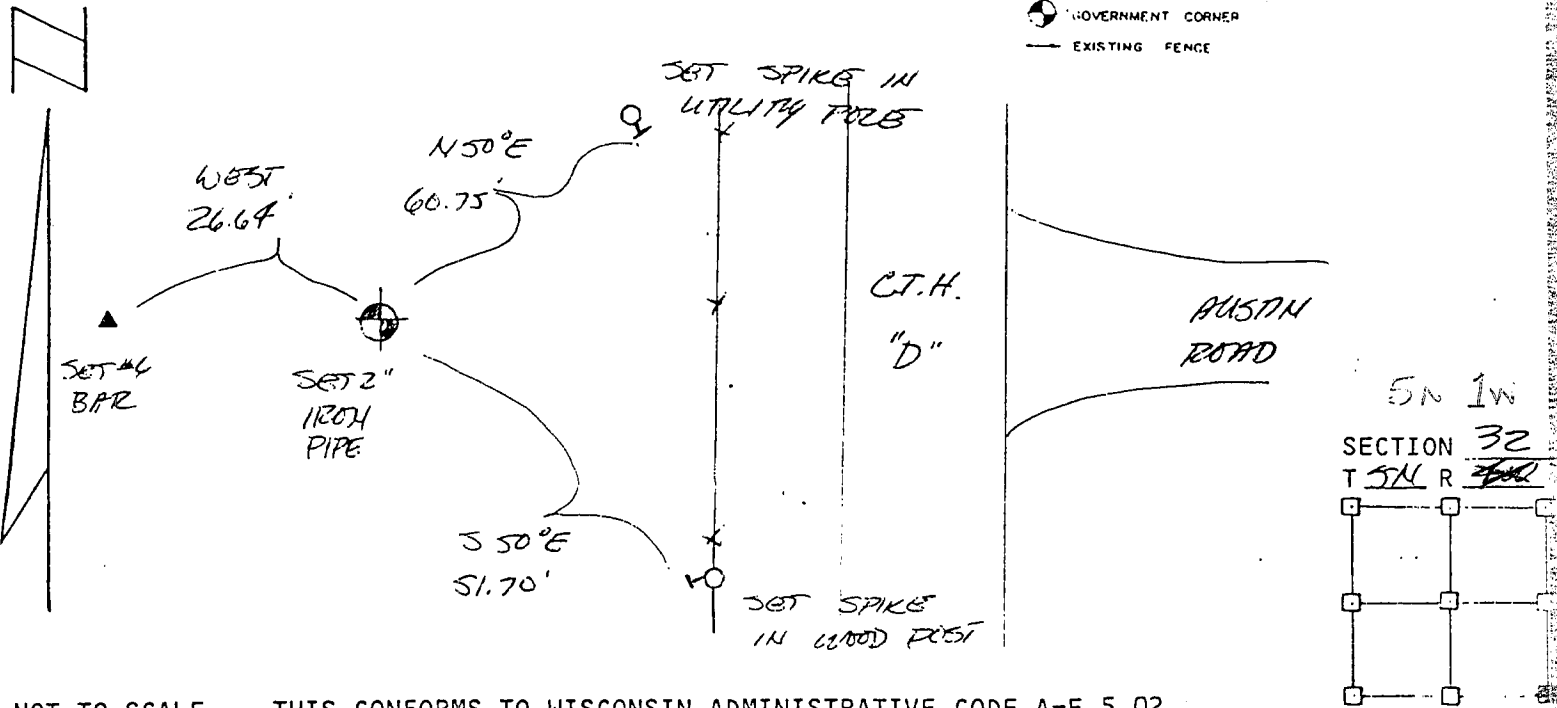
CORNER DESCRIPTION: SE CORNER, SECTION 32, T 5 N, R 4 W  
 STATE PLANE COORDINATES: N \_\_\_\_\_, E \_\_\_\_\_  
 THETA ANGLE: \_\_\_\_\_

HORIZONTAL DATUM: WISCONSIN STATE PLANE COORDINATE SYSTEM, SOUTH ZONE

EVIDENCE: CENTERLINE PROJECTIONS OF BTH D FROM THE NORTH AND  
CENTERLINE AUSTIN ROAD FROM THE EAST

MONUMENT: FOUND , PLACED   
 METHOD OF RESTORATION (RE-ESTABLISHMENT):  
 ACCEPTED EXISTING MONUMENT  
 ACCEPTED OCCUPATION  
 LOST CORNER PROPORTIONATE METHODS  
 DATE CORNER SET: 11.22.88

- LEGEND
- ▲ SET 1/2" REBAR, 113 LBS PER LINEAL FT MIN WT
  - SET 1" X 24" IRON PIPE, 113 LBS PER LINEAL FT MIN WT
  - SET 2" X 30" IRON PIPE, 3.65 LBS PER LINEAL FT MIN WT
  - FOUND 1" IRON PIPE
  - FOUND 2" IRON PIPE
  - FOUND R/R SPIKE
  - SET R/R SPIKE
  - ⊙ GOVERNMENT CORNER
  - EXISTING FENCE

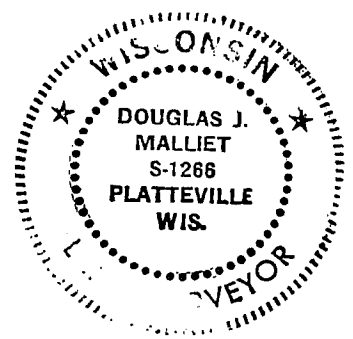


NOT TO SCALE THIS CONFORMS TO WISCONSIN ADMINISTRATIVE CODE A-E 5.02

SURVEYOR'S AFFIDAVIT:  
 STATE OF WISCONSIN)  
GRANT COUNTY) SS

I hereby certify that I, DOUGLAS J. MALLIET, have complied with the Wisconsin State Statutes, Statutes of the United States, and the rules and regulations made by the Secretary of the Interior in the location of the corner shown above.

DATE OF SURVEY: 12.8.88  
Douglas J. Malliet  
 REGISTERED LAND SURVEYOR  
 # 1260



D. F. BURBACH MUNICIPAL & CIVIL ENGINEERS

410 NORTH SECOND STREET • PLATTEVILLE, WISCONSIN 53818 • (608) 348-3262

P-129