

# GRANT COUNTY

## Survey Monument Record

TYPE OF MONUMENT RAIL ROAD SPIKE  
STATE PLANE COORDINATES: N \_\_\_\_\_  
E \_\_\_\_\_  
ELEVATION — M.S.L. DATUM: \_\_\_\_\_  
THETA ANGLE: \_\_\_\_\_  
FIELD BOOK: 9321  
PAGE \_\_\_\_\_

CORNER NO. 96  
SECTION 29  
TOWN 5N  
RANGE 1W



LOCATION  
(Indicated by "•")

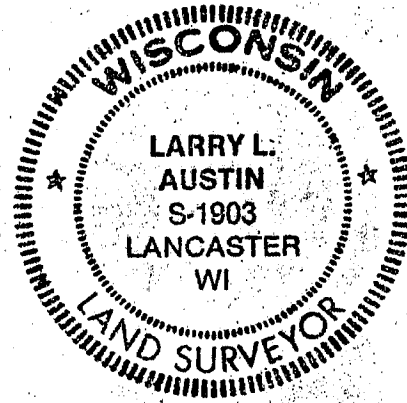
SEAL:

### BASIS FOR MONUMENT LOCATION

(Use reverse side if necessary)

Show info such as: History of corner, with reference to Vol. and pg., dates, surveyor; exact description of monument replaced; if location computed, by taped or EDM traverse; landowner, remarks, etc.

NO RECORD FOUND OF COR. SINCE  
ORIG. SURVEYS, CORNER WAS SET  
AT EXTENSION OF FENCE FROM EAST  
& C. OF C.T.H. "D"; VERIFIED BY  
EDM TRAVERSE OF THE AREA



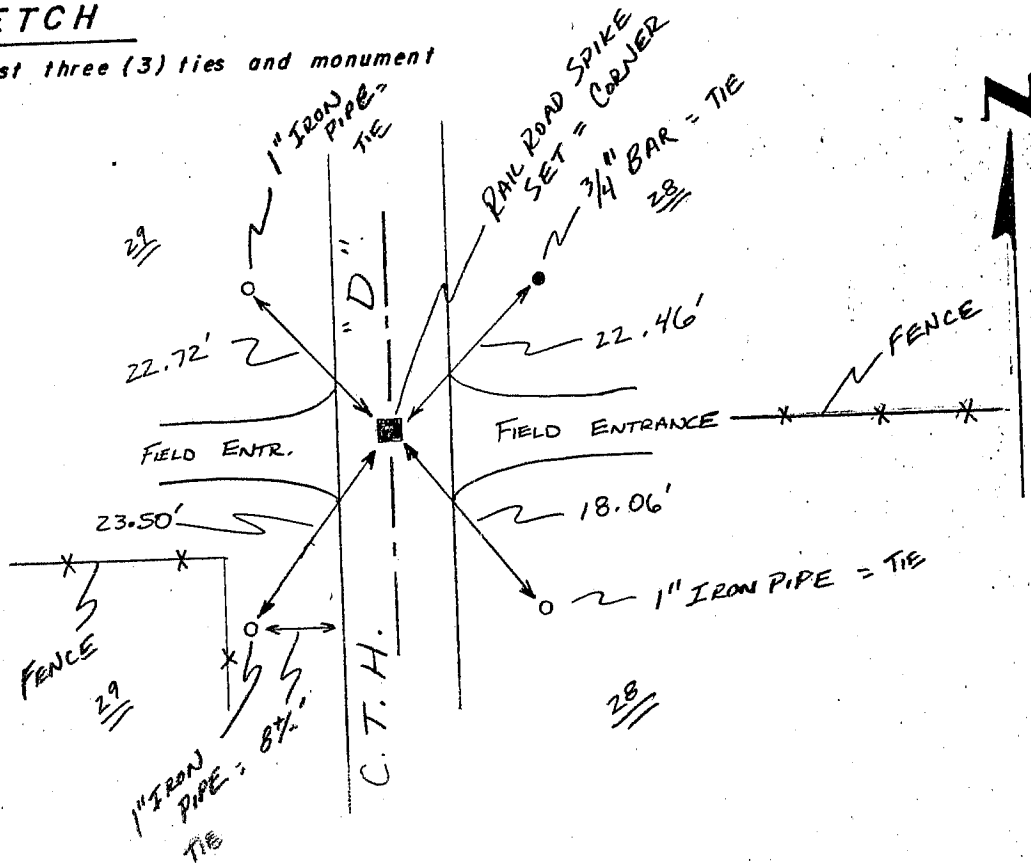
CERTIFIED CORRECT

Larry L. Austin  
Registered Land Surveyor

DATE: 1/5/94

### TIE SKETCH

Show at least three (3) ties and monument



No SCALE